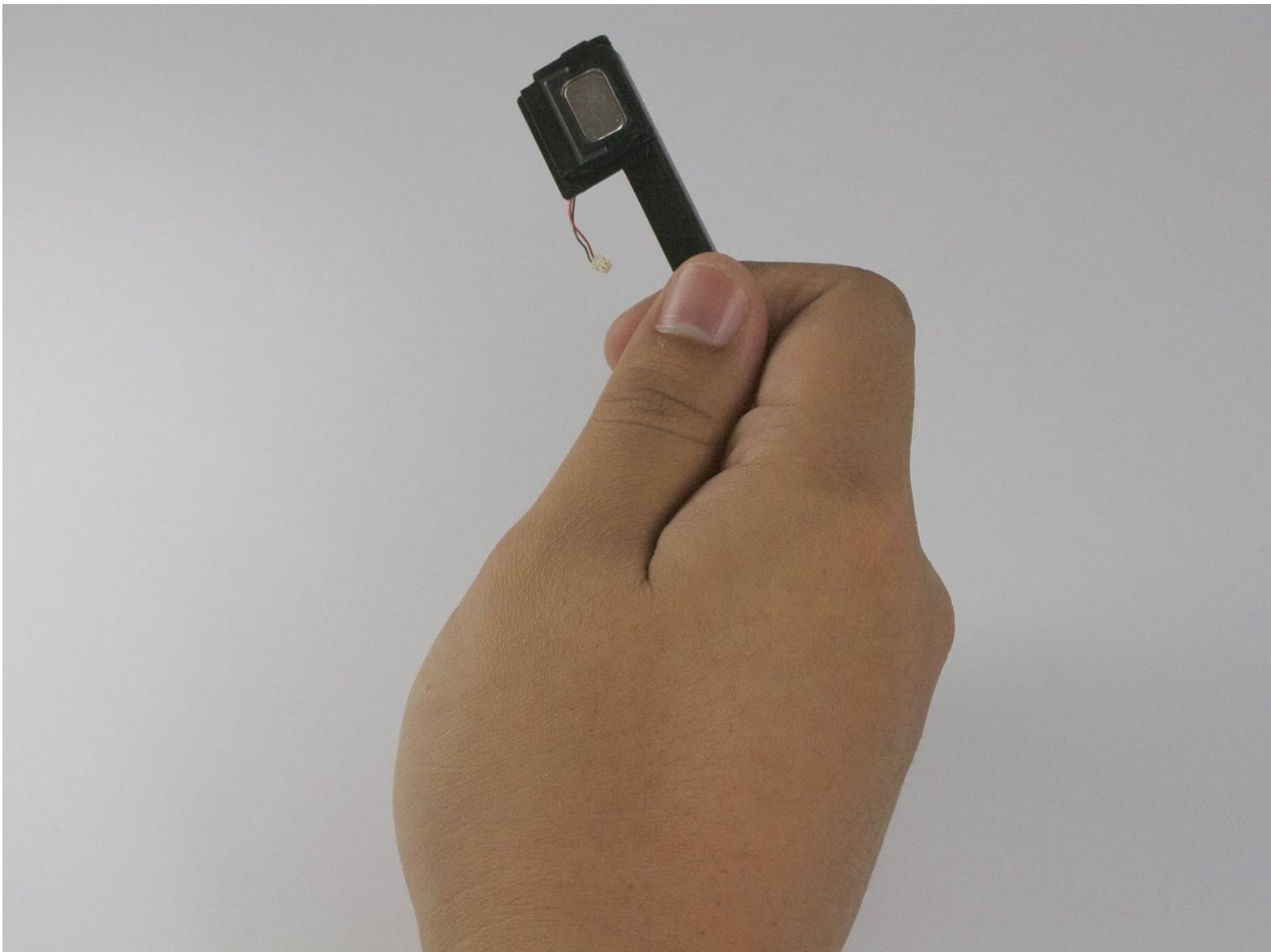




Acer Iconia A110 Speaker Replacement

The removal of the speaker is a moderately easy process.

Written By: Andrea



INTRODUCTION

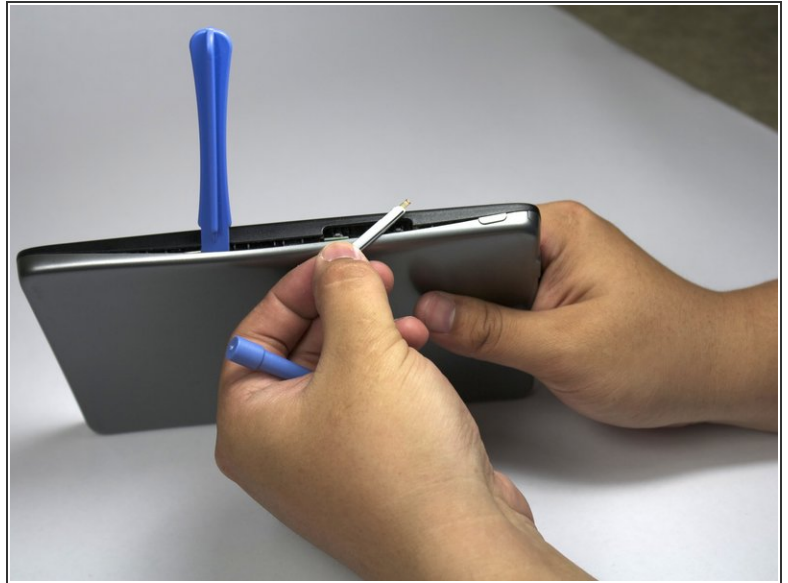
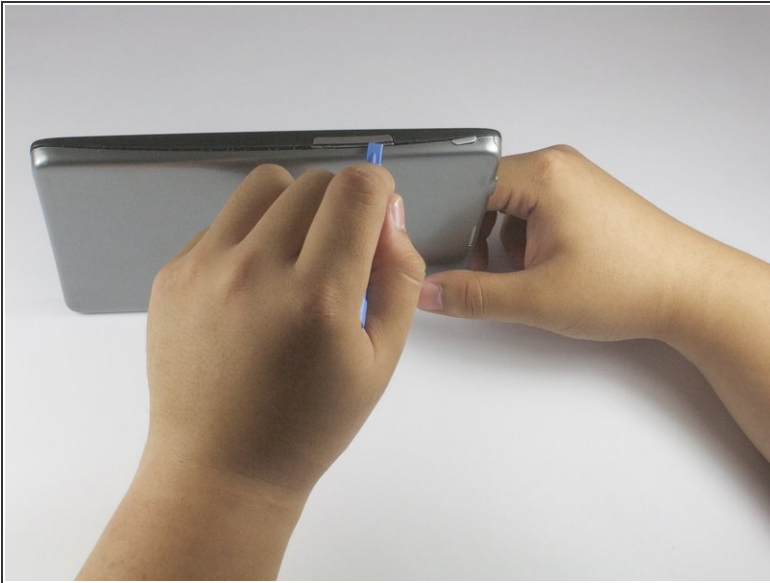
This guide will lead you step by step on how to remove the speaker.





TOOLS:

- [iFixit Opening Tools](#) (1)
 - [Spudger](#) (1)
 - [Tweezers](#) (1)
 - [Phillips #00 Screwdriver](#) (1)
-

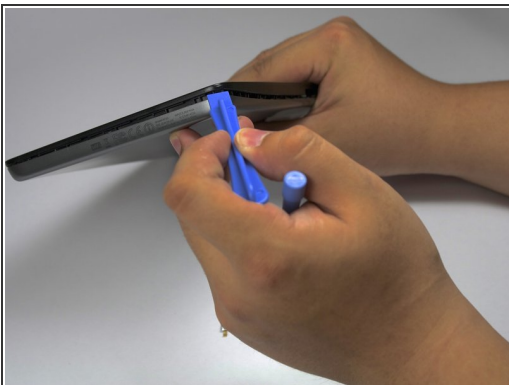
Step 1 — Battery



 Before taking apart your tablet, make sure the device is powered off.

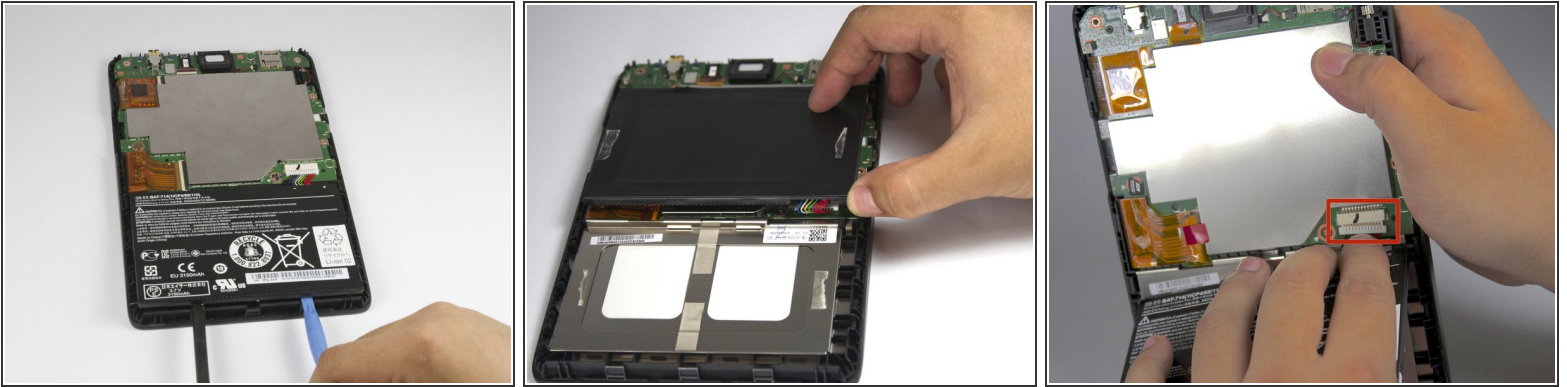
- Pry open the right side of case with the plastic opening tool. If necessary, keep a tool lodged into the side to keep the case from closing.
-  During this process, the volume button and/or power button may fall out.

Step 2



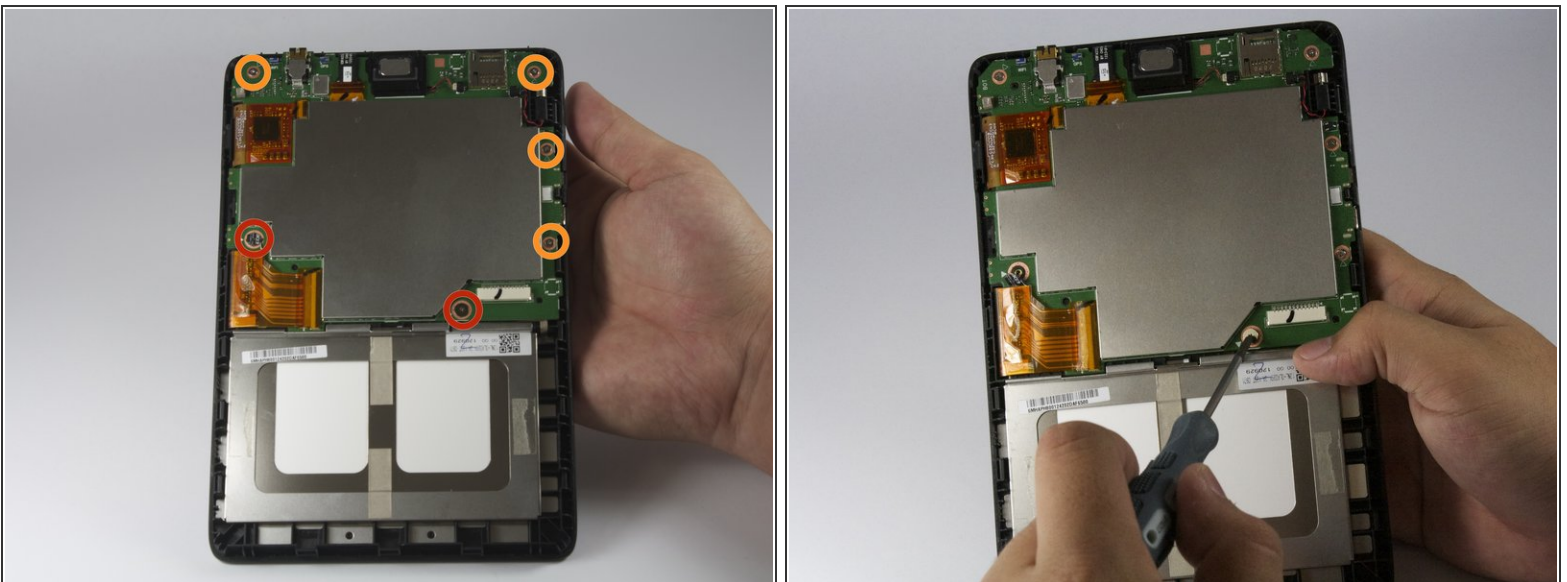
- Pry open the left side of the case with a plastic opening tool. The backside of the tablet should now separate completely from the front.

Step 3



- Using the plastic opening tool and spudger, carefully pry up the battery from the case.
- i** You should hear the adhesive ripping as you do this.
- Once the battery is no longer adhered to the case, detach the dongle that connects the battery to the motherboard.

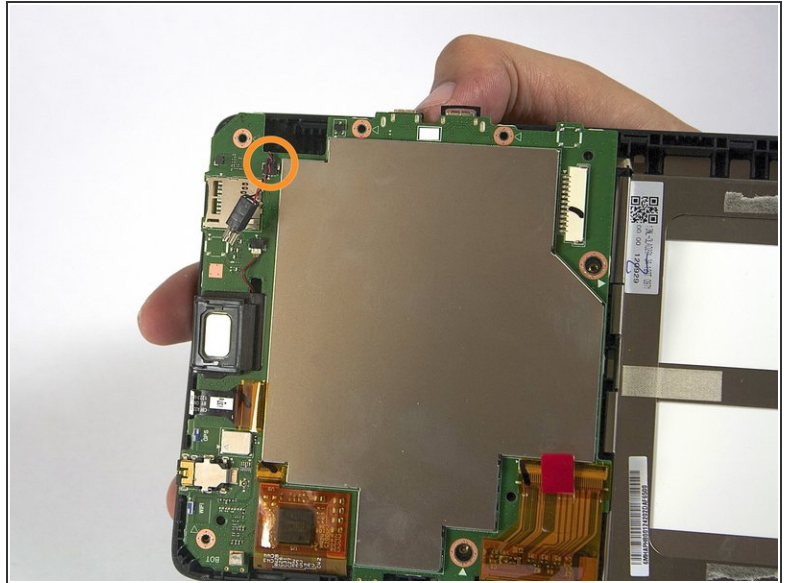
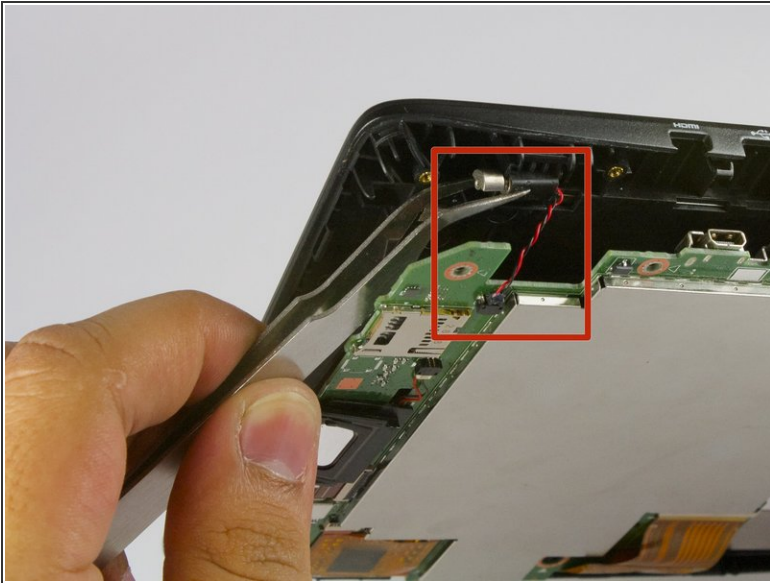
Step 4 — Speaker



- With the Phillips #00 screwdriver, remove the following screws securing the motherboard to the back panel:
 - Two 2.0 mm screws (with the bigger head)
 - Four 2.5 mm screws (with the smaller head)

This document was generated on 2020-11-24 02:24:19 AM (MST).

Step 5

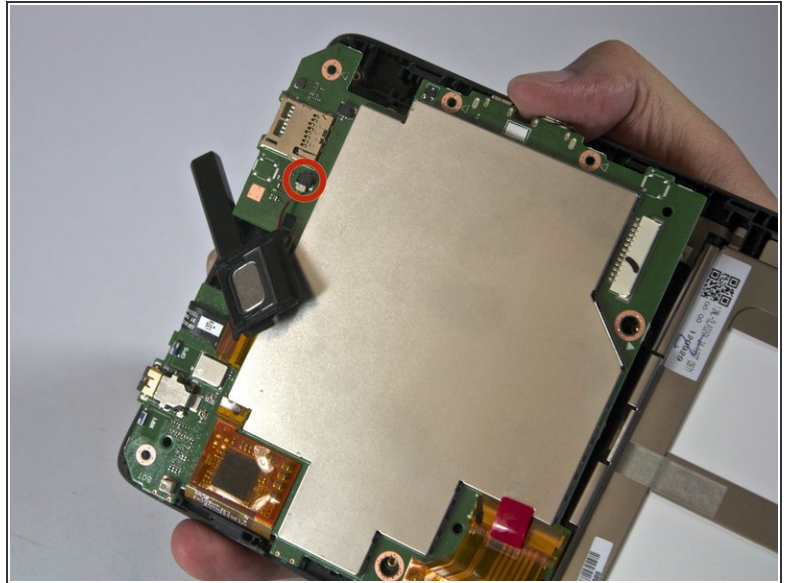
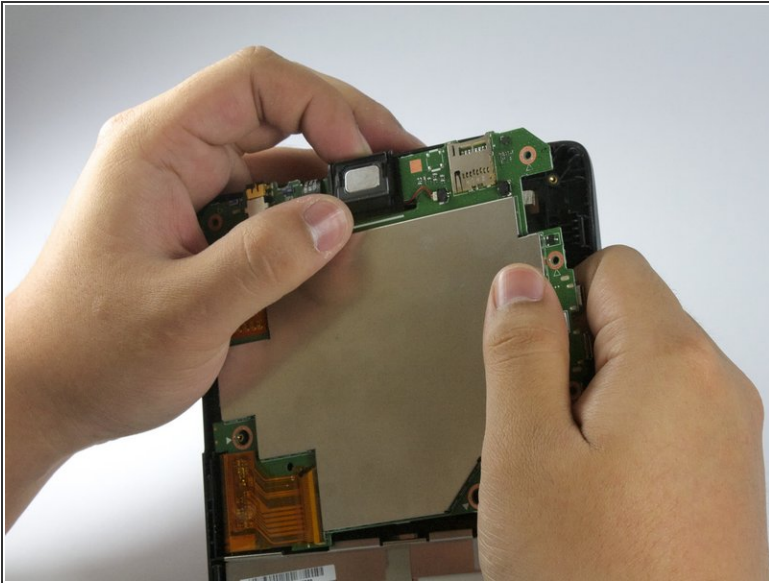


- On the top right side of the motherboard, is the vibration motor. With tweezers, carefully pull the vibration motor out from underneath the motherboard.

⚠ The vibration motor is still connected to the motherboard by a small wire connection, so be careful not to rip the wire out.

- With your fingers, carefully disconnect the cable securing the vibration motor to the motherboard. Set aside.

Step 6



- The speaker located on the top of the motherboard should easily slide out. Take note that there is still a wire connected, so do so carefully.
- With your fingers, slowly pull out the wire connecting the speaker to the motherboard.

To reassemble your device, follow these instructions in reverse order.