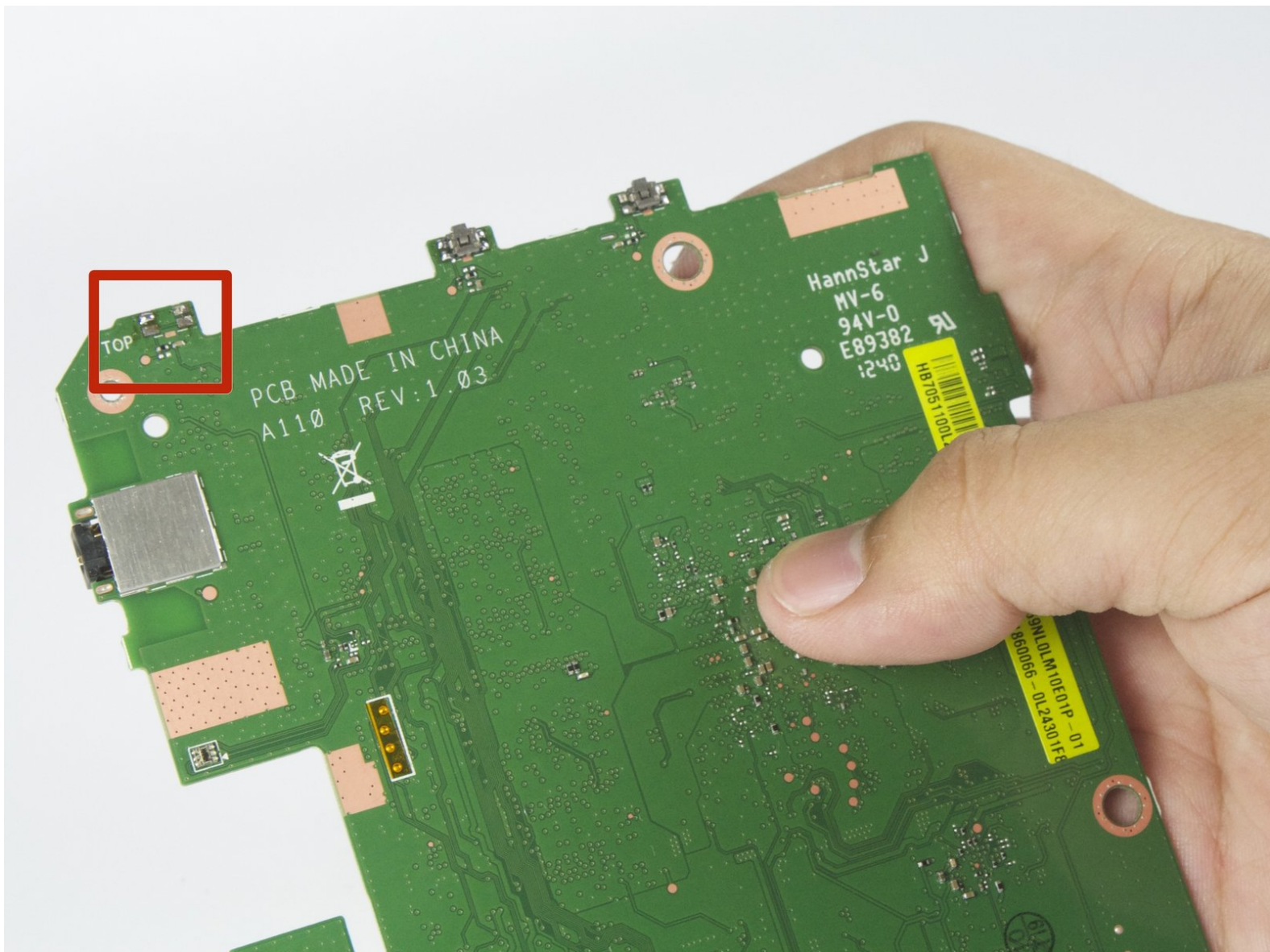




# Acer Iconia A110 On/Off Switch Replacement

This guide will lead you through the steps to replace the Acer Iconia A110 on/off switch.

Written By: Andrea

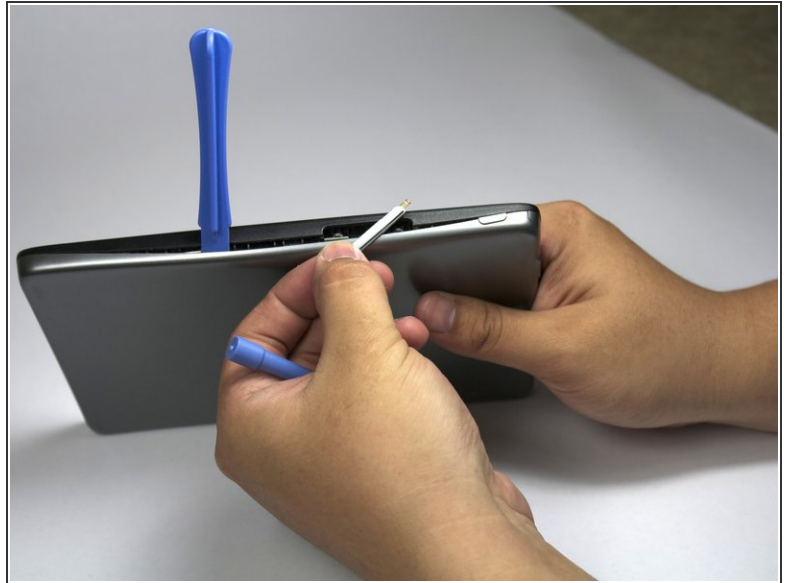
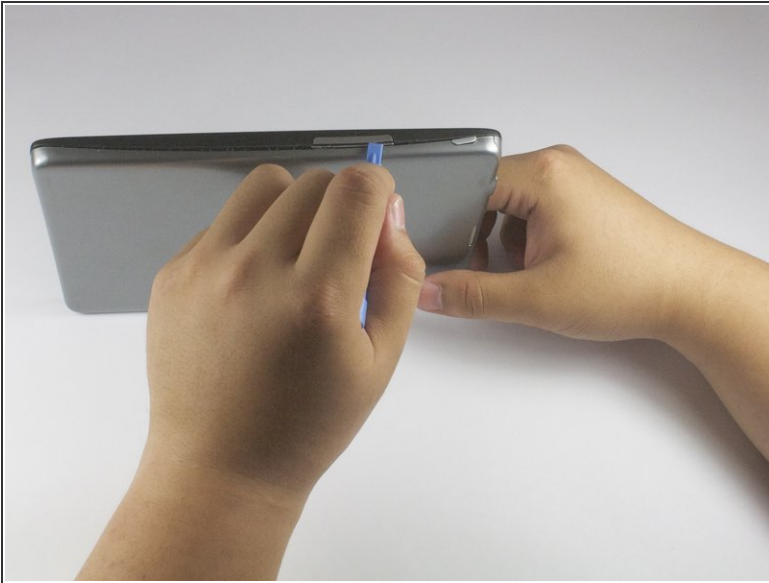






## TOOLS:

- [iFixit Opening Tools](#) (1)
- [Spudger](#) (1)
- [Phillips #00 Screwdriver](#) (1)
- [Tweezers](#) (1)

## Step 1 — Battery



 Before taking apart your tablet, make sure the device is powered off.

- Pry open the right side of case with the plastic opening tool. If necessary, keep a tool lodged into the side to keep the case from closing.
-  During this process, the volume button and/or power button may fall out.

## Step 2



- Pry open the left side of the case with a plastic opening tool. The backside of the tablet should now separate completely from the front.

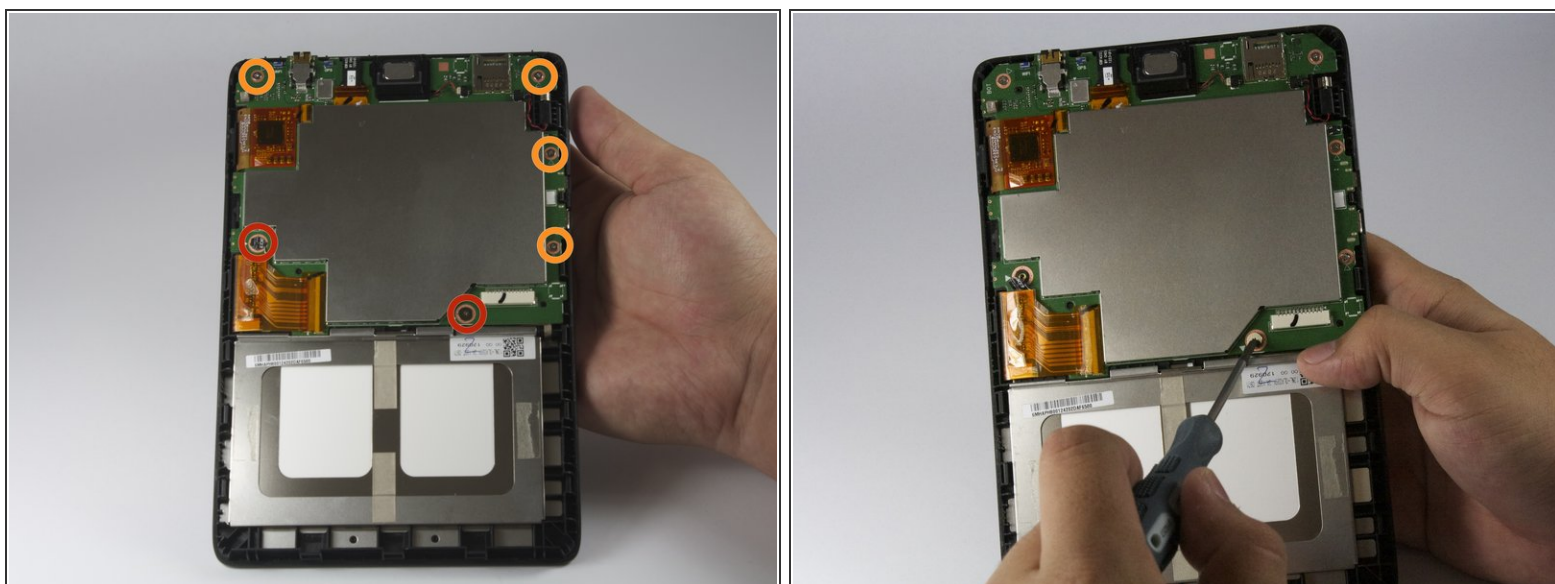


## Step 3



- Using the plastic opening tool and spudger, carefully pry up the battery from the case.
- i** You should hear the adhesive ripping as you do this.
- Once the battery is no longer adhered to the case, detach the dongle that connects the battery to the motherboard.

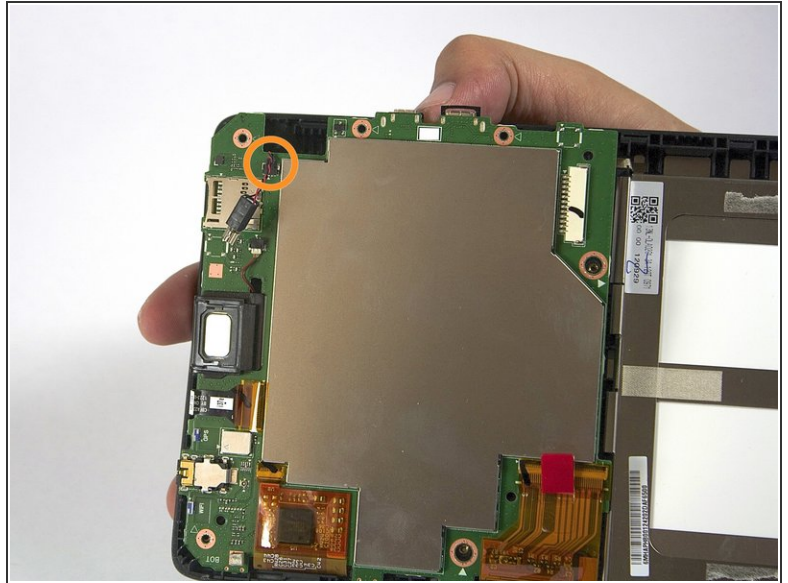
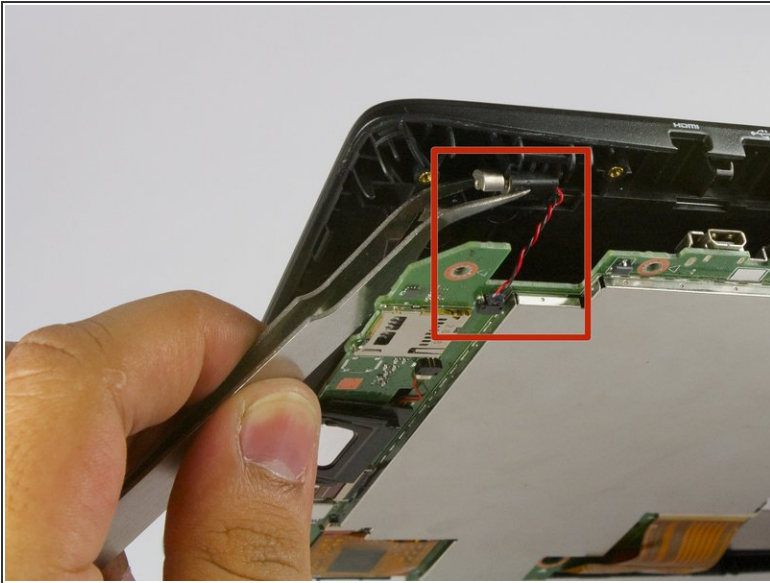
## Step 4 — Speaker



- With the Phillips #00 screwdriver, remove the following screws securing the motherboard to the back panel:
  - Two 2.0 mm screws (with the bigger head)
  - Four 2.5 mm screws (with the smaller head)

This document was generated on 2020-11-28 03:17:50 AM (MST).

## Step 5

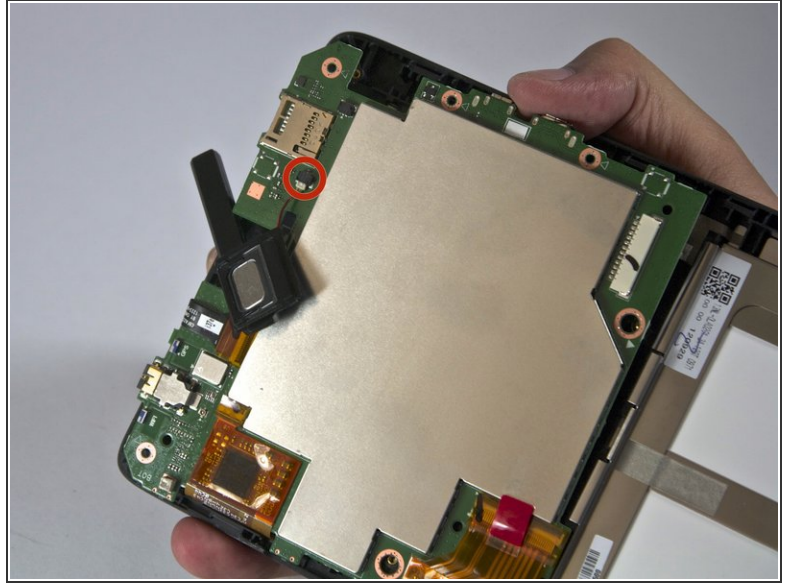
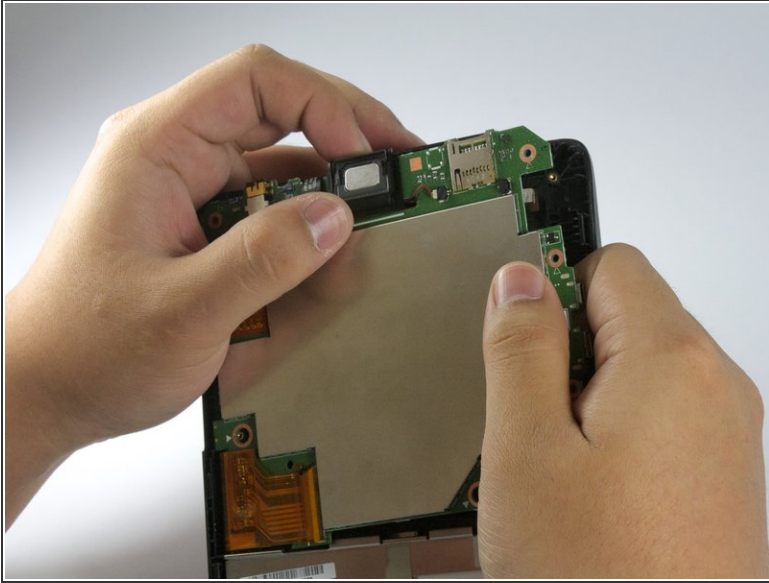


- On the top right side of the motherboard, is the vibration motor. With tweezers, carefully pull the vibration motor out from underneath the motherboard.

⚠ The vibration motor is still connected to the motherboard by a small wire connection, so be careful not to rip the wire out.

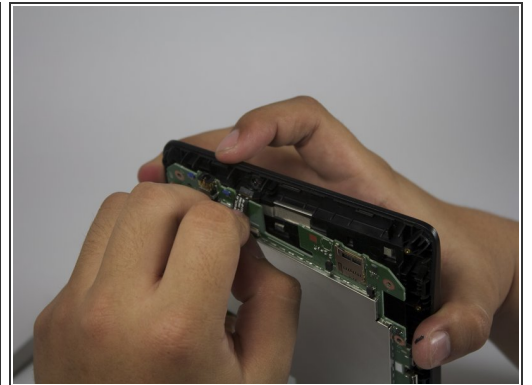
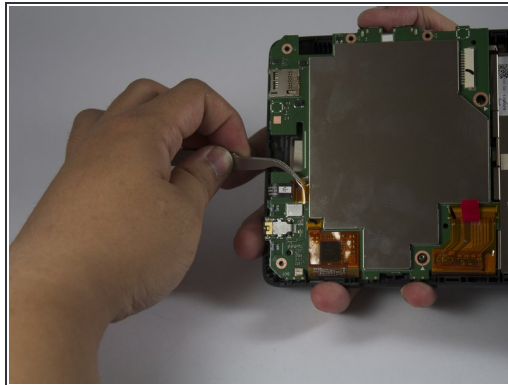
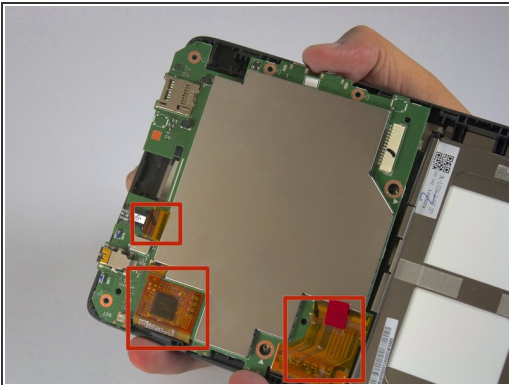
- With your fingers, carefully disconnect the cable securing the vibration motor to the motherboard. Set aside.

## Step 6



- The speaker located on the top of the motherboard should easily slide out. Take note that there is still a wire connected, so do so carefully.
- With your fingers, slowly pull out the wire connecting the speaker to the motherboard.

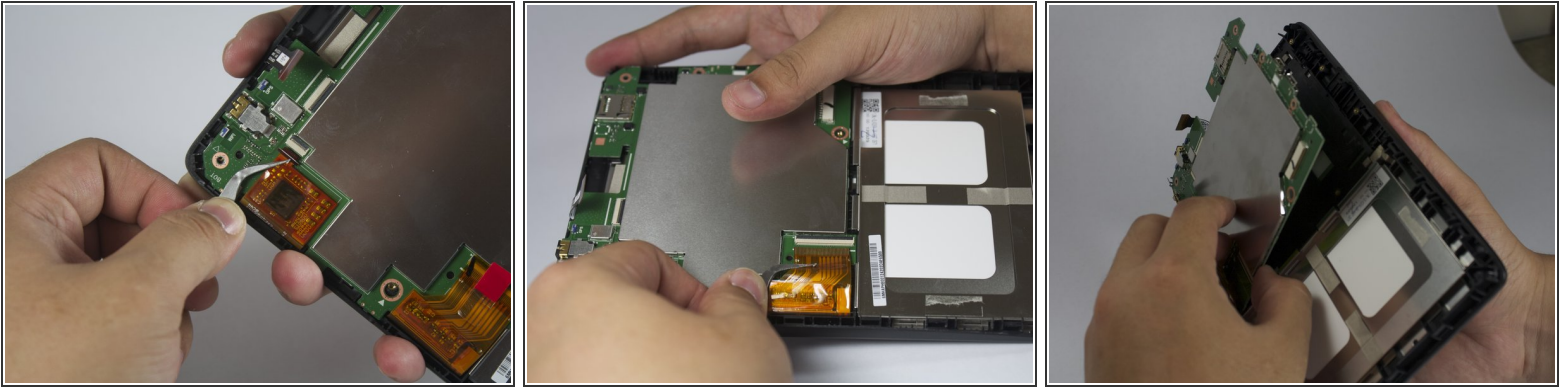
## Step 7 — Motherboard



- The next step is to pull out the ribbon cables connected to the motherboard.
  - Each ribbon cable has a sticker covering it; peel it off with tweezers.
  - Use tweezers to pull out the ribbon cable.
- ⚠ Make sure to pull the ribbon cable horizontally, not vertically to avoid tearing the ribbon

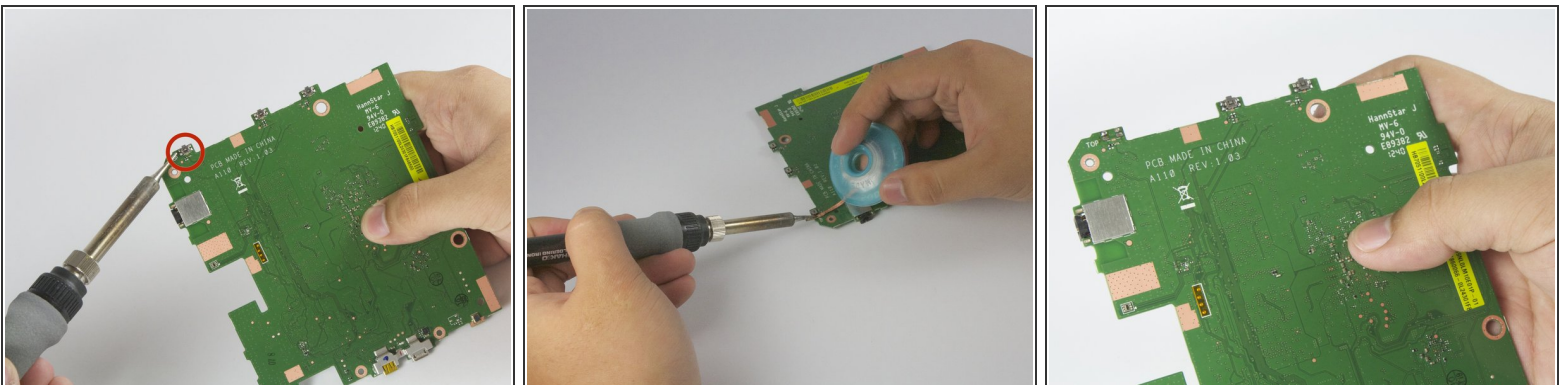


## Step 8



- After all ribbon cables are disconnected, move them out of the way, and the motherboard should fall out easily.

## Step 9 — On/Off Switch



- After the motherboard is removed, the buttons are visible on the side.
- ⚠ If you do not have soldering experience, STOP HERE. View [this link](#) for an ifixit soldering guide.
- Use a soldering iron and a soldering wick to desolder the button. This could be tough due to the lead free solder used in the manufacturing process.

To reassemble your device, follow these instructions in reverse order.