



# Speaker Unit Replacement

This guide will help you replace dead speakers on an iHome iP37.

Written By: Jerrell



---

# INTRODUCTION

This guide will walk you through the process of replacing dead speakers on the iHome iP37.

---



## TOOLS:

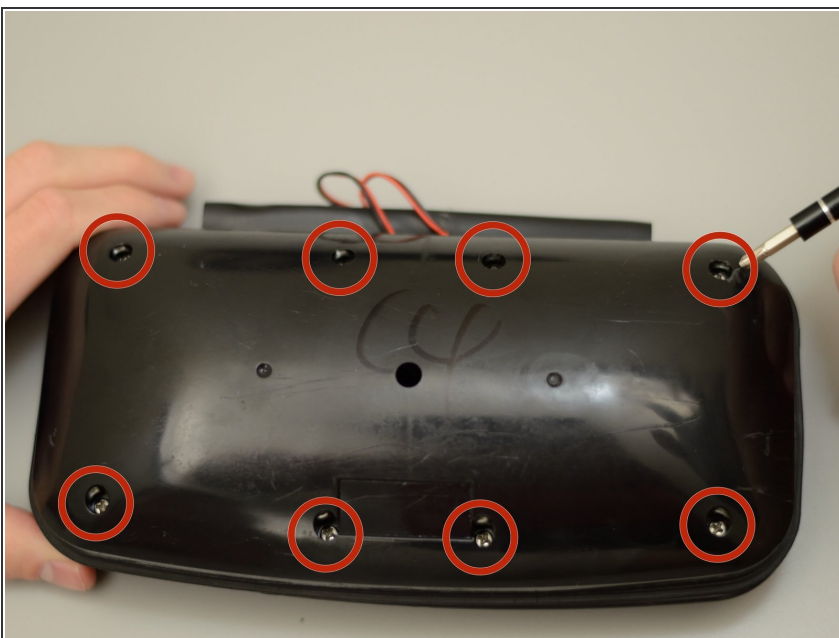
- [Phillips #2 Screwdriver](#) (1)
  - [Phillips #1 Screwdriver](#) (1)
  - [Soldering Iron](#) (1)
  - [Solder](#) (1)
  - [Desoldering Braid](#) (1)
-

## Step 1 — Exterior Housing



- Pry the exterior housing off the iHome iP37. You may need extra leverage to do this.
- ⓘ Note: This step is the most difficult due to the way it is attached. The glue holding the exterior housing to the internals does not break easily. You may want to use iFixit's [iOpener](#) to soften the glue.
- ⓘ Note: The process is the same for both the upper half and the lower half. To identify the halves, look for these details: the upper half has a metal grid, and the lower half has buttons. If you are replacing any other components, pry off the lower half.

## Step 2 — Speaker Unit



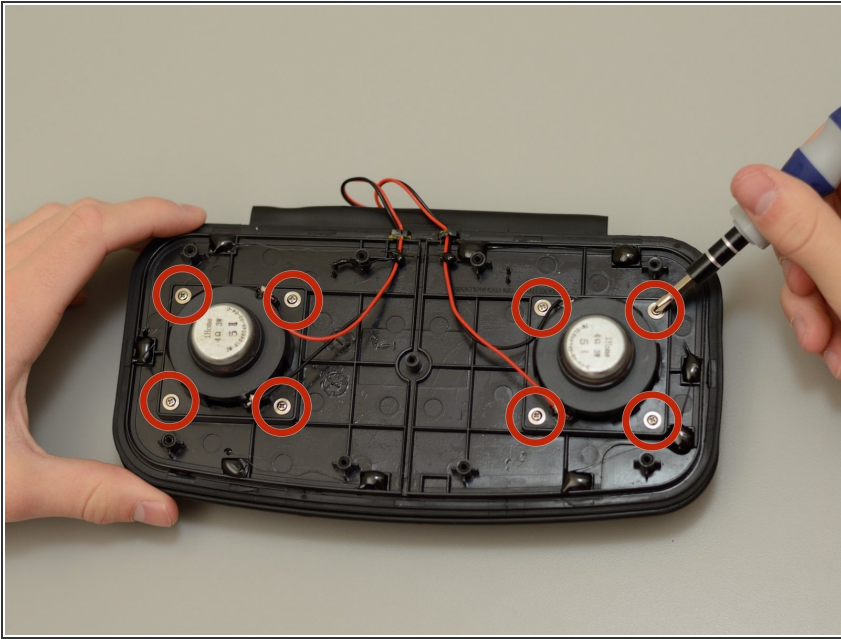
- Remove these eight 9 mm screws using a Phillips #2 driver.

## Step 3



- Carefully lift the cover off. It may be a little sticky from glue.

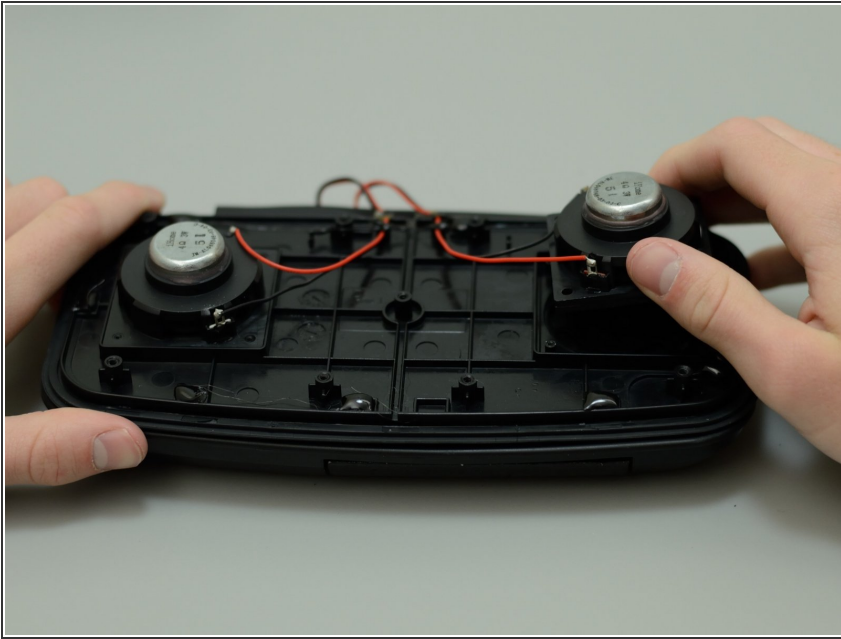
## Step 4



- Remove the four 6mm screws that hold the broken speaker in place. This step requires a Phillips #1 driver. If you are replacing both speakers, remove all 8 screws.



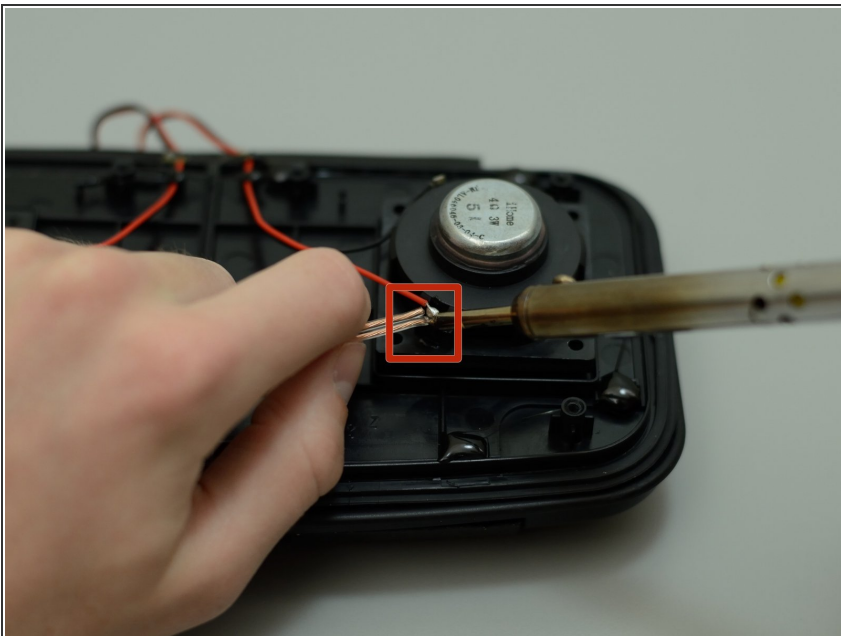
## Step 5



**⚠ Caution:** the speaker is fitted quite snug. it may take a bit of effort to remove. However, be careful not to pull too hard as you may accidentally pull on the wires once the speaker unit is free.

- Hold the speaker by its cylindrical frame and cautiously lift it away from the rest of the device.

## Step 6



- De-solder the existing soldered connections and remove the speaker from the rest of the device.
- Insert and solder in a working speaker of the same model. Make sure the points where the wire ends connected are consistent with the old speakers.

**i** Note: If you notice that a wire is disconnected, this may be the cause of your problems. Re-solder the connection to fix it.

**i** You can refer to [iFixit's guide](#) or [this informative video](#) for more information on soldering.

To reassemble your device, follow these instructions in reverse order.