



Sony NEX-5R Top Panel Replacement

This guide will be for the replacement of the top panel on the Sony NEX-5R. The guide is useful if the top panel, or any of the buttons on it are damaged.

Written By: Steven Fronczak



INTRODUCTION

The removal of the top panel involves the removal of the front case to be able to reach the screws necessary for the removal of the top panel.



TOOLS:

- [Phillips #00 Screwdriver](#) (1)
 - [Spudger](#) (1)
-

Step 1 — Front Case



- Open the battery pack door by moving the slider to "OPEN".
- Remove the 3.25 mm silver screw inside the battery pack with a Phillips screwdriver.

Step 2



- Remove the 3.25 mm exterior screw with a Phillips screwdriver.

Step 3



- Use the spudger to raise the corner of the case from the camera.
- One component of the front case should now be separate from the camera.

Step 4 — Rear Case



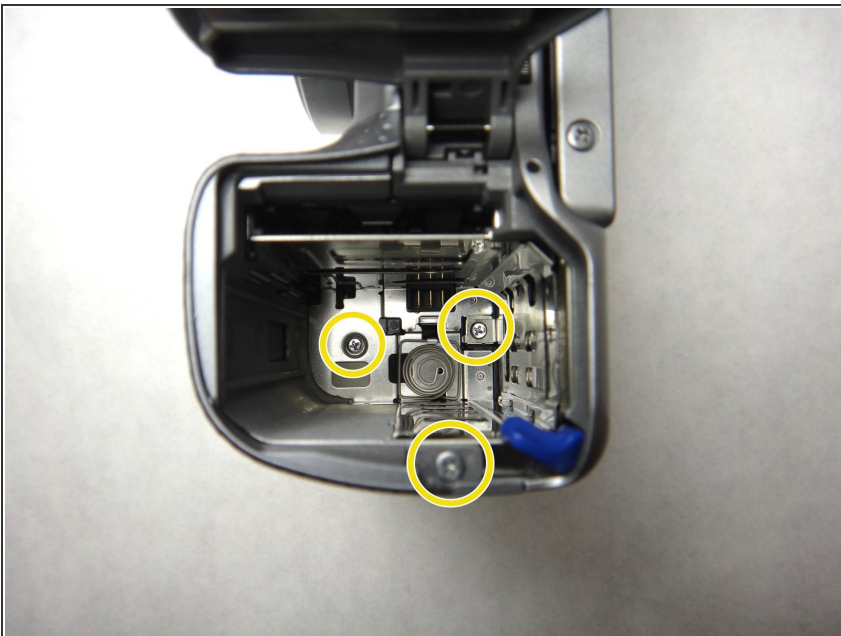
- Remove the three (3.5 mm) screws from the bottom of the camera with the Phillips screwdriver.

Step 5



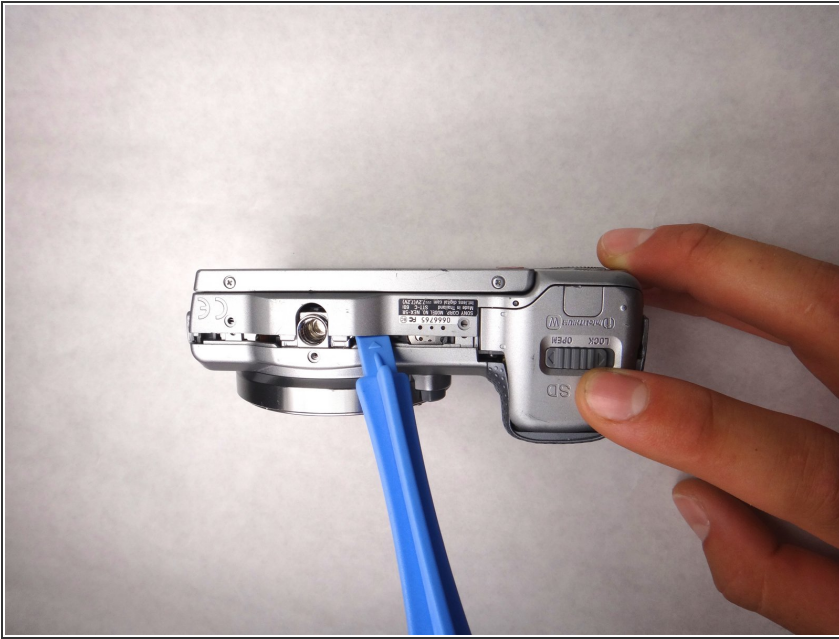
- Open the HDMI port, and remove the the two (3.5 mm) Phillips screws exposed on that side.

Step 6



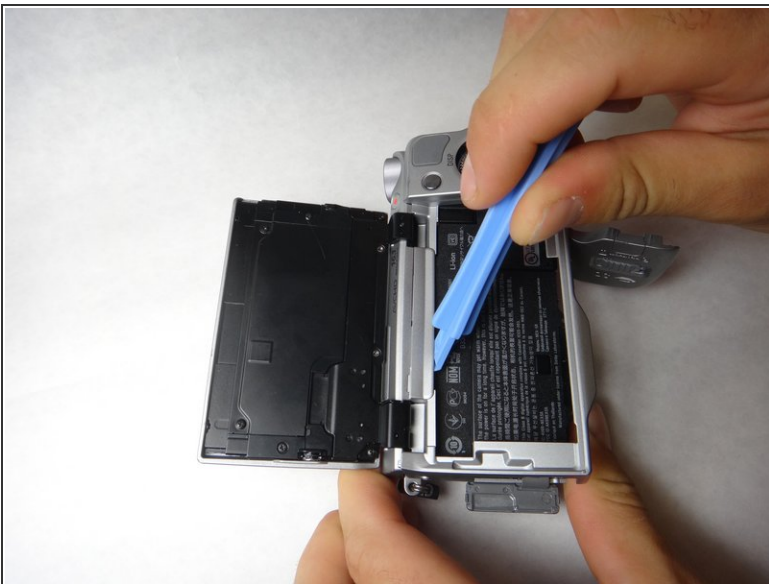
- Remove the two 4mm screws from the interior of the battery pack, and one 3.5mm screw from beside it.

Step 7



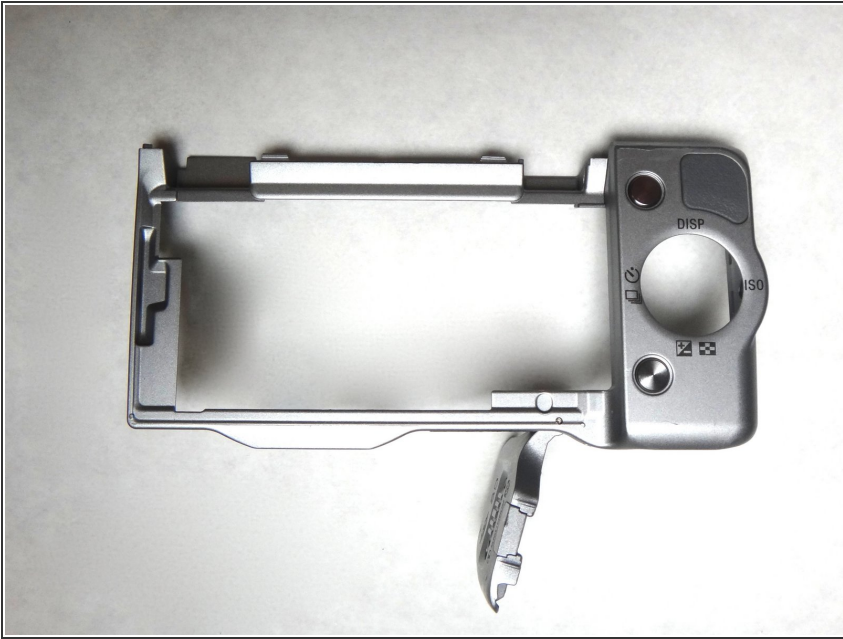
- Looking at the bottom of the camera, use the spudger to lift the rear case away from the camera body.

Step 8



- Using the spudger again, carefully pry from the top of the camera to remove the back frame.
- The back frame is fragile, so use the spudger gently.

Step 9



- The back case should now be removed and look like this.

Step 10 — Top Panel



- Remove the 3.5mm phillips head screw underneath the flash port

Step 11



- Remove the 3.5mm phillips head screw on the top left of the camera.

Step 12



- Use the spudger tool to go around the seam of the top panel. The top should easily lift off.

Step 13



- This is what the camera and top panel should look like after you have completed the guide

To reassemble your device, follow these instructions in reverse order.