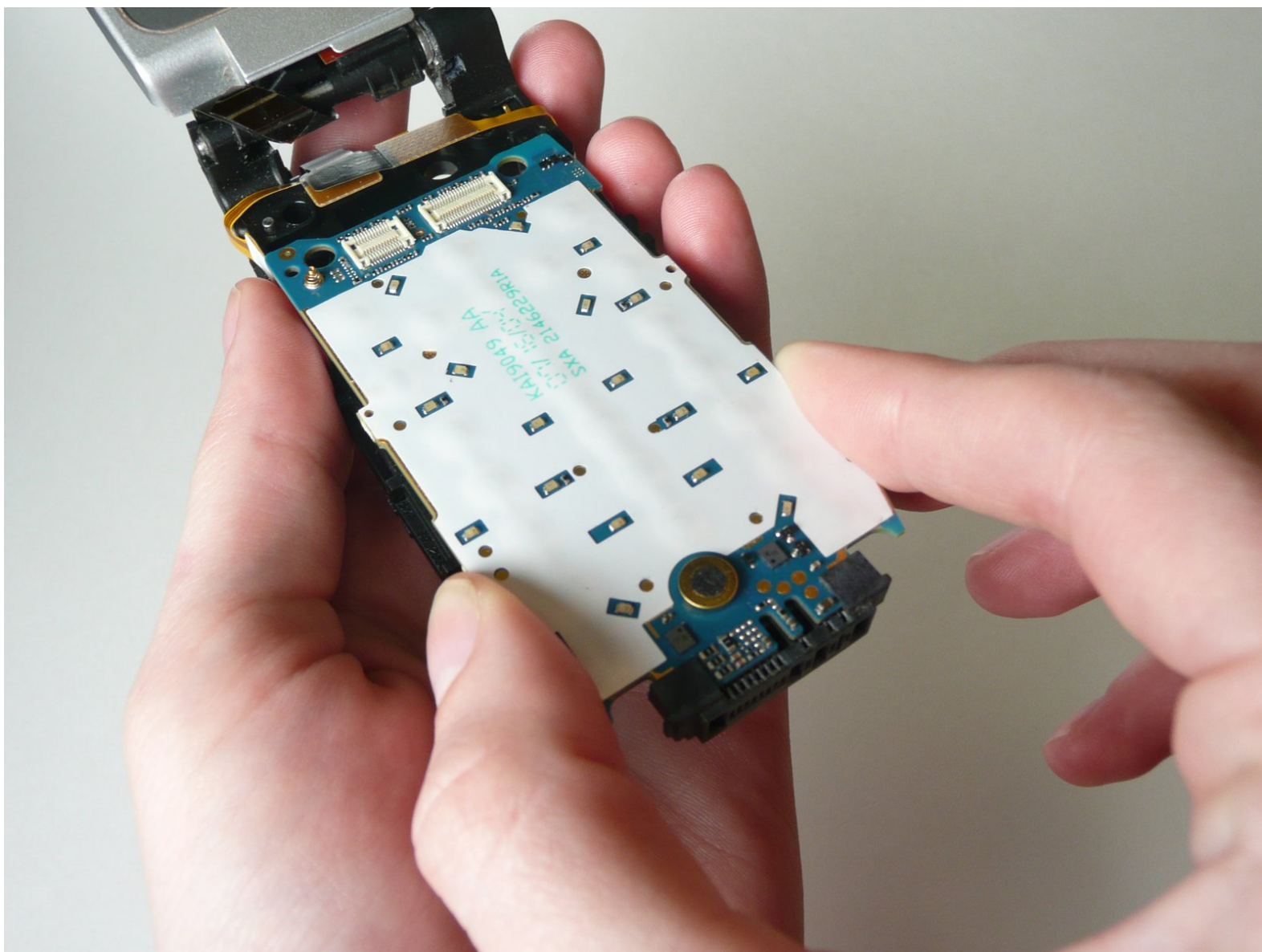




Sony Ericsson Z500a Logic Board Replacement

Written By: Tim



INTRODUCTION

The Logic Board is the part that the keys hit and translates the signals to the phone.



TOOLS:

- [T6 Torx Screwdriver](#) (1)
-

Step 1 — Keypad



- Remove the back cover by pulling it down, and then take out the battery.
- Using a T6 Torx screwdriver, remove the 4 screws.
- Keep the phone open with the back cover facing you.

Step 2



- Use the plastic opening tool and run it between the case and the body of the device to loosen the keyboard
- ⓘ There are 2 clamps that lock the keyboard to the case (1 on each side)

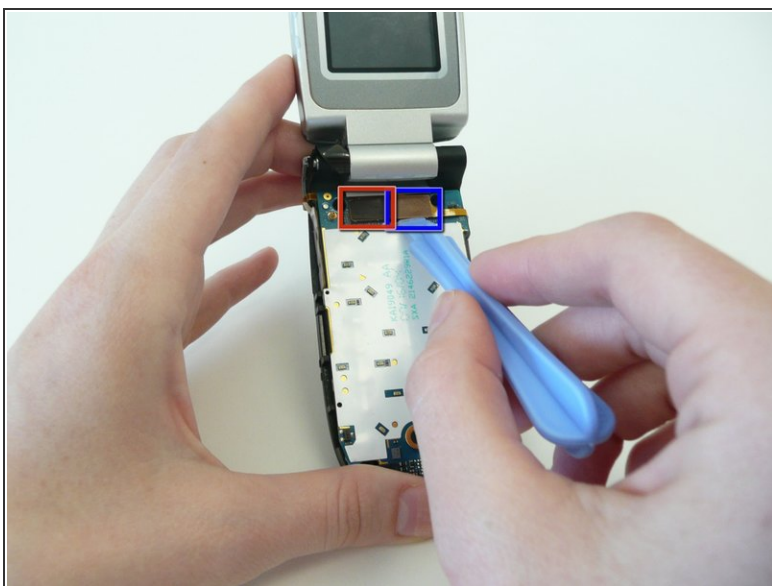
Step 3



- Flip the phone over and lift straight up on the key pad to remove it.

⚠ Be sure to hold the phone flat (parallel to the table) so that no loose parts fall out.

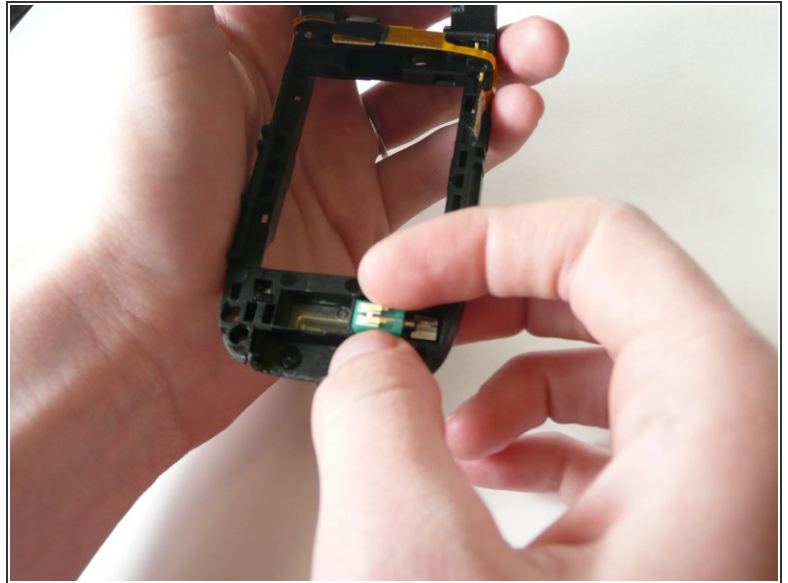
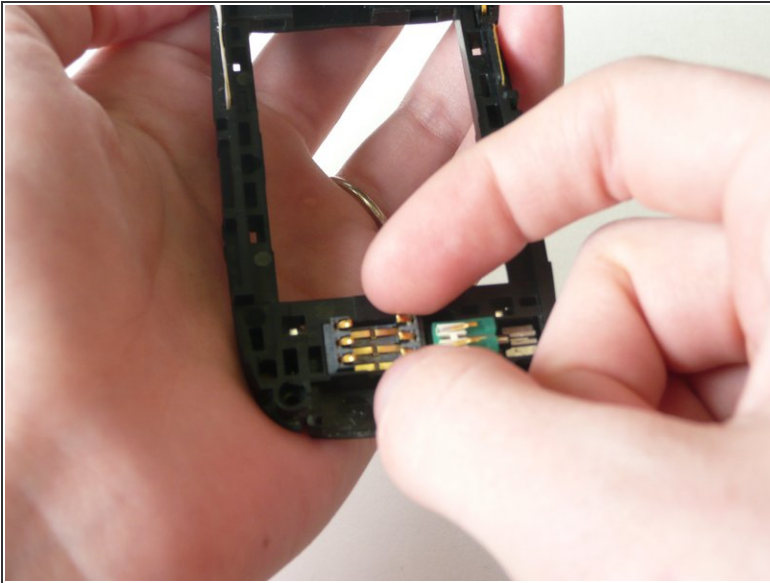
Step 4 — Logic Board



- Use the opening tool to remove the 2 ribbon wires (boxed in the photo) from the logic board.

⚠ Gently lift the back of the logic board and then pull outwards. Be careful not to rip the ribbon wire.

Step 5



- Remove the black sim card reader and green vibrator before continuing to ensure they do not fall out.

To reassemble your device, follow these instructions in reverse order.