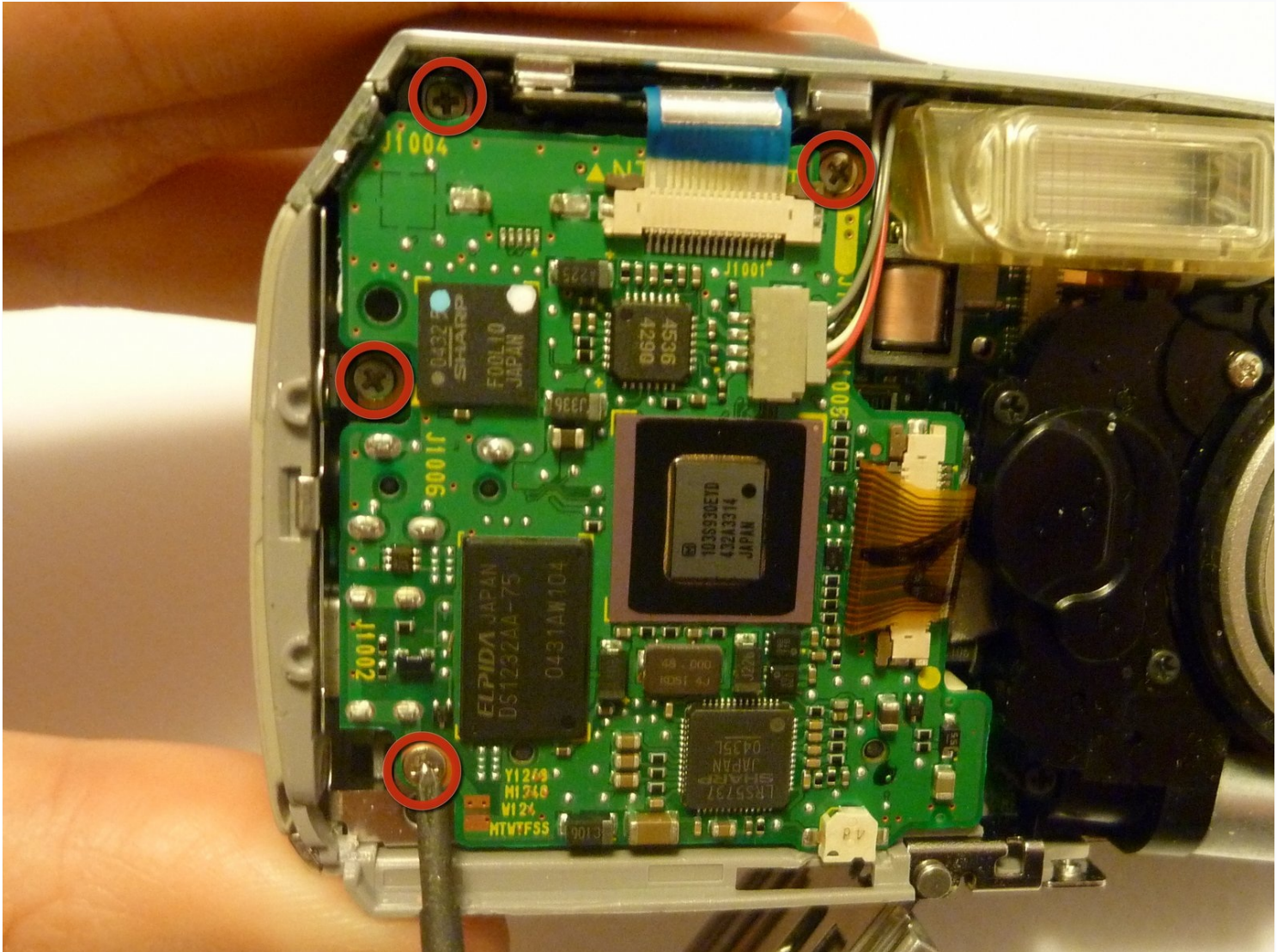




Olympus D590 Motherboard Replacement

Step-by-step Instruction Guide Olympus D590...

Written By: Sara



INTRODUCTION

Step-by-step Instruction Guide

Olympus D590 Logic Board Replacement

TOOLS:

Tweezers (1)

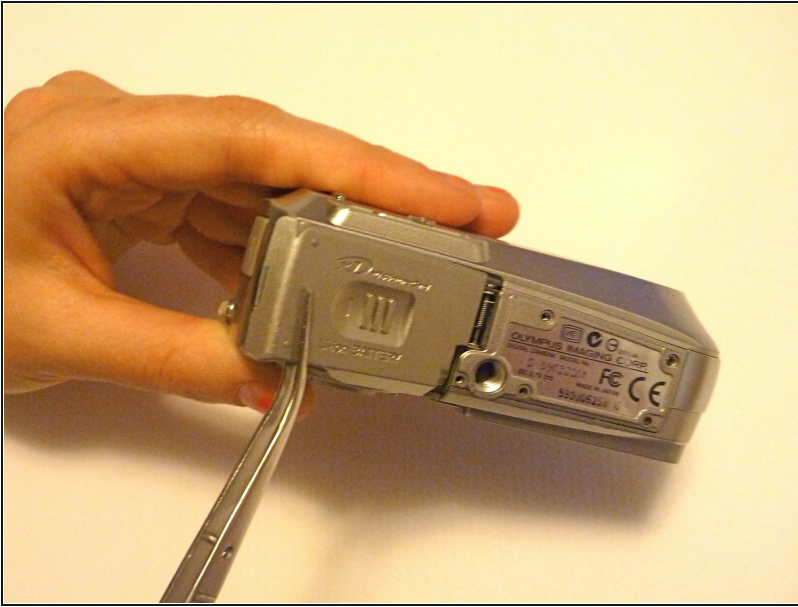
Phillips #1 Screwdriver (1)

Step 1 — Face Plate



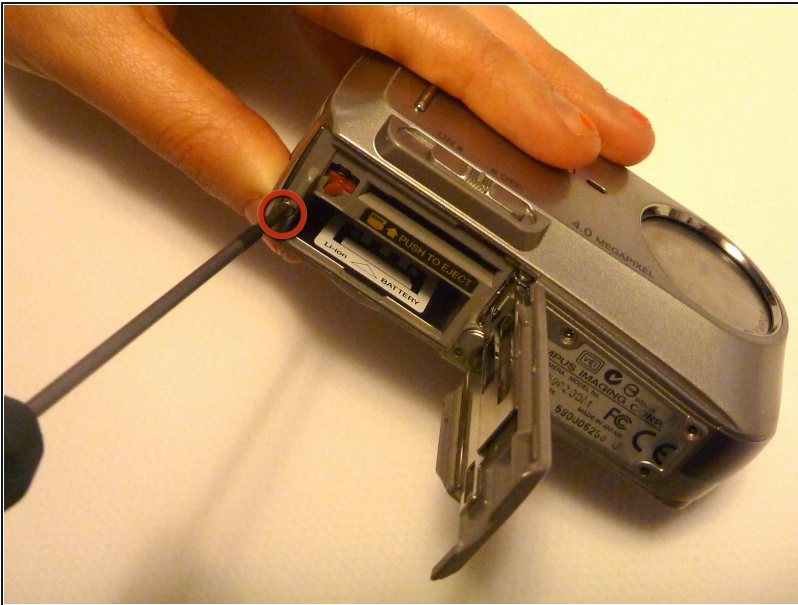
- Remove five baseplate screws using a Phillips #00 screwdriver.

Step 2



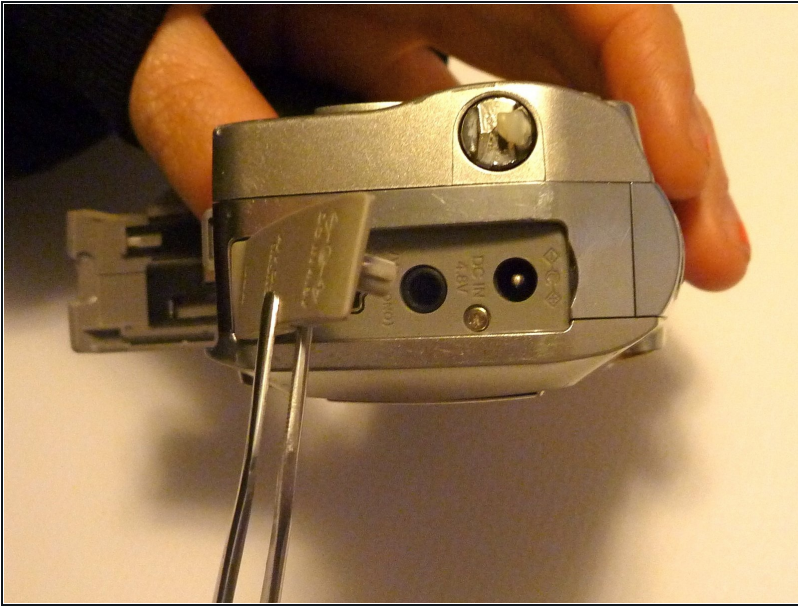
- Press and slide the battery cover retainer clip to the left. Use [tweezers](#) to lift the battery cover away.

Step 3



- Remove the single screw from the battery housing using a Phillips #00 screwdriver.

Step 4



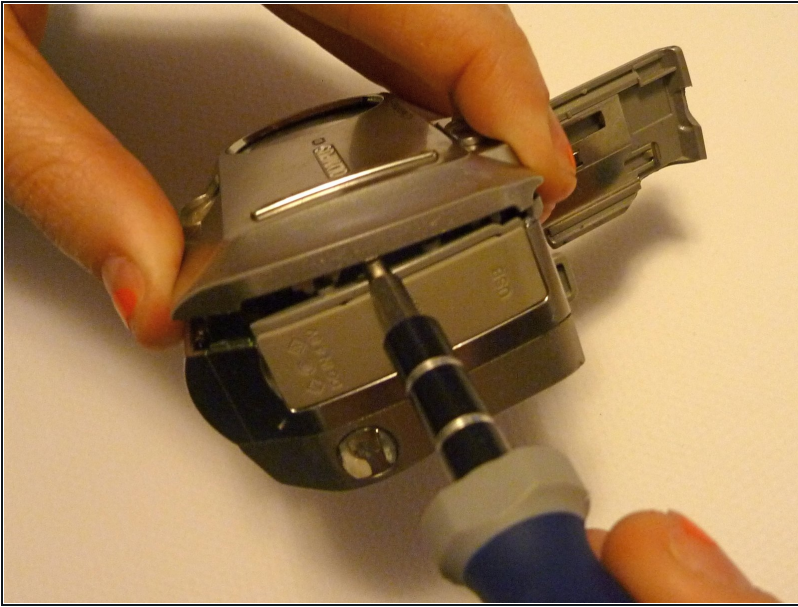
- Using tweezers, lift the rubber plate to expose the ports.

Step 5



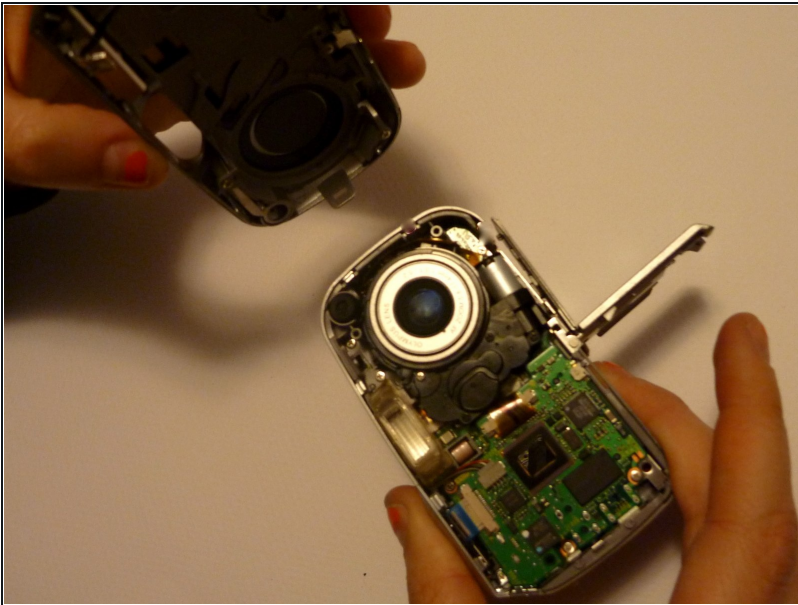
- Remove two screws from the ports using a Phillips #00 screwdriver.

Step 6



- Use a spudger to pry the faceplate away from the rest of the camera.

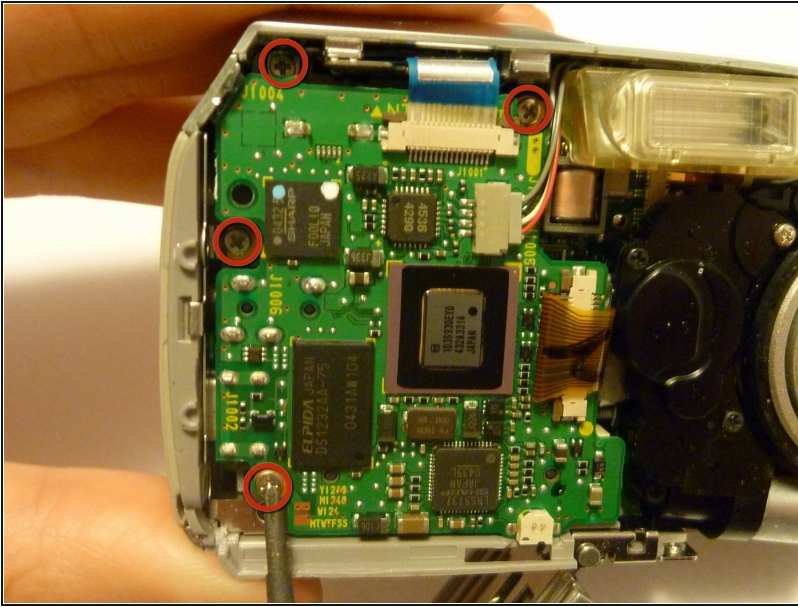
Step 7



- To avoid disconnection of the connector line to the motherboard, use caution when pulling faceplate away from camera case.

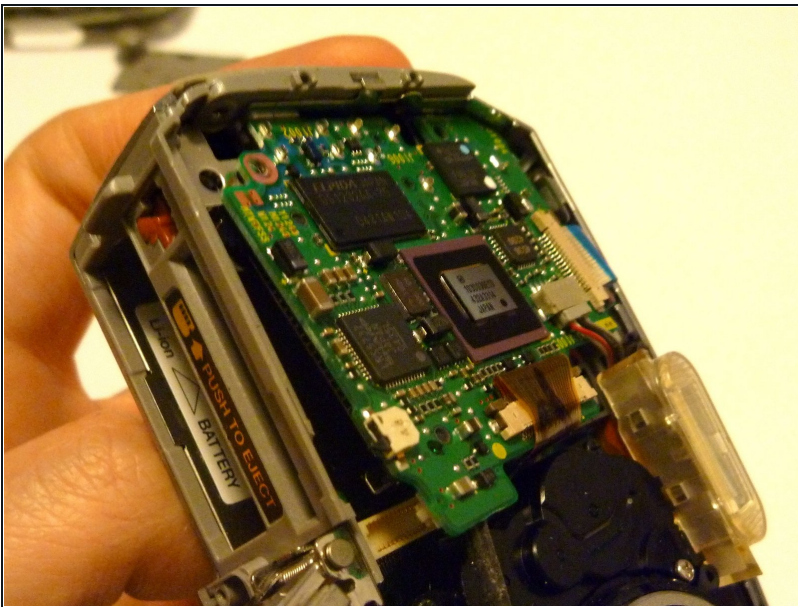
⚠ Damage to the connector line will prevent the on/off power switch's operational function.

Step 8 — Motherboard



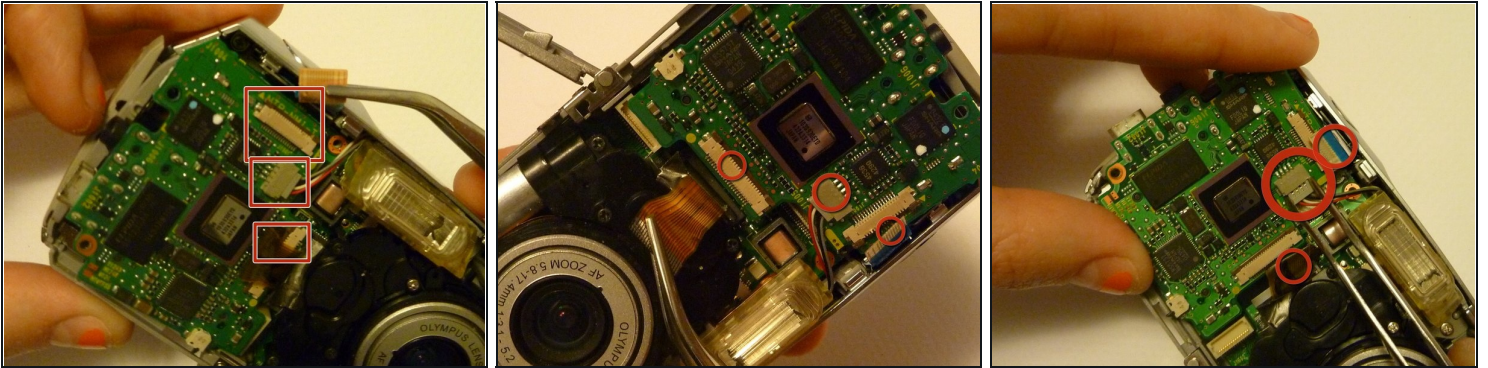
- Remove four screws holding the motherboard to the internal housing component using a Phillips #1 screwdriver.

Step 9



- ⚠ Be cautious of the wires attached to the motherboard.
- Remove the motherboard from the internal housing component.
- ⚠ Do not completely lift the motherboard out with the wiring connected. The wires must be disconnected before proceeding. The next step will demonstrate disconnection process.

Step 10



- Use rounded [tweezers](#) to disconnect the three wiring strips from the motherboard.
- ⚠ Using sharp tweezers may tear wiring tape and wires.
- ⓘ Use gentle force when wiggling or pulling wiring tape and wires to disconnect from the motherboard.
-

To reassemble your device, follow these instructions in reverse order.