



iPad 2 GSM GPS Antenna Replacement

Use this guide to replace the GPS antenna...

Written By: Sam Goldheart



INTRODUCTION

Use this guide to replace the GPS antenna sticker, located under the right cellular antenna assembly, in your second generation iPad GSM.

Parts of this guide were shot with a Wi-Fi model and as such the internals may look slightly different from the cellular model. The procedure is the same for both models except where noted.

TOOLS:



[SIM Card Eject Tool](#) (1)
[iOpener](#) (1)
[iFixit Opening Picks \(Set of 6\)](#) (1)
[Phillips #00 Screwdriver](#) (1)
[iFixit Opening Tool](#) (1)
[Spudger](#) (1)

PARTS:

[iPad 2 GPS Antenna](#) (1)
[iPad 2 Adhesive Strips](#) (1)

Step 1 — iOpener Heating



-  We recommend that you clean your microwave before proceeding, as any nasty gunk on the bottom may end up stuck to the iOpener.
- Place the iOpener in the center of the microwave.
 -  **For carousel microwaves:** Make sure the plate spins freely. If your iOpener gets stuck, it may overheat and burn.

Step 2



- Heat the iOpener for **thirty seconds**.
- Throughout the repair procedure, as the iOpener cools, reheat it in the microwave for an additional thirty seconds at a time.

⚠ Be careful not to overheat the iOpener during the repair. Overheating may cause the iOpener to burst. Do not attempt to heat over 100°C (212°F).

⚠ Never touch the iOpener if it appears swollen.

⚠ If the iOpener is still too hot in the middle to touch, continue using it while waiting for it to cool down some more before reheating. A properly heated iOpener should stay warm for up to 10 minutes.

Step 3



- Remove the iOpener from the microwave, holding it by one of the two flat ends to avoid the hot center.

⚠ The iOpener will be very hot, so be careful when handling it. Use an oven mitt if necessary.

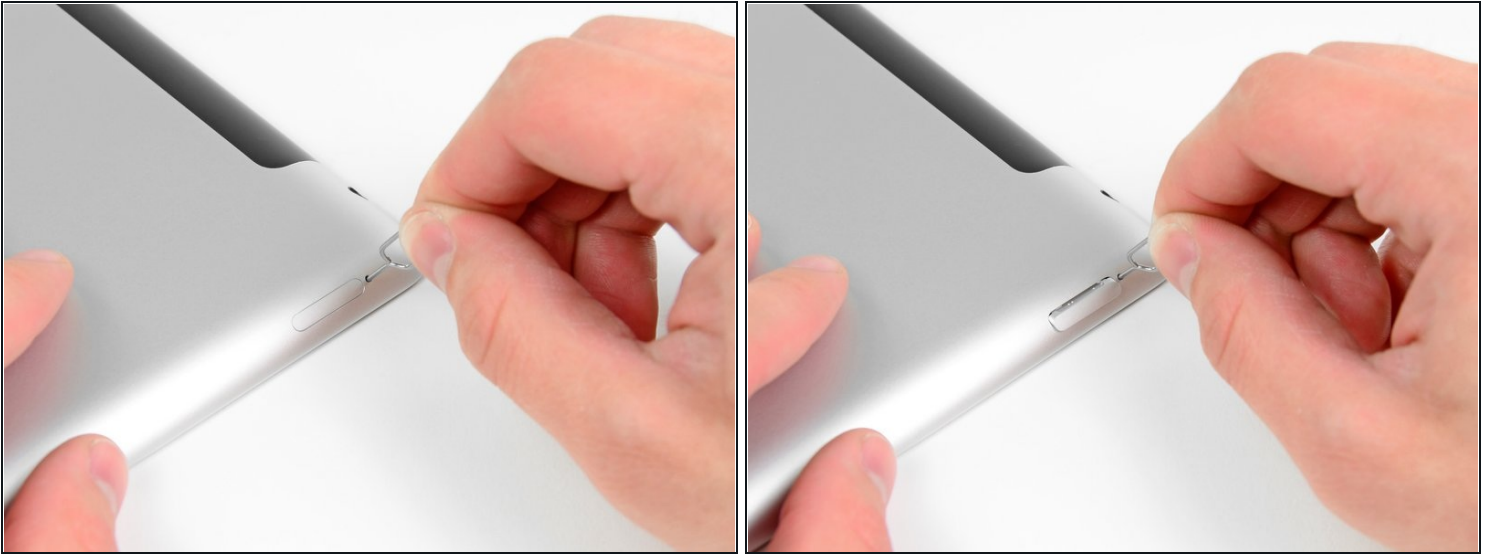
Step 4 — Alternate iOpener heating method



ⓘ If you don't have a microwave, follow this step to heat your iOpener in boiling water.

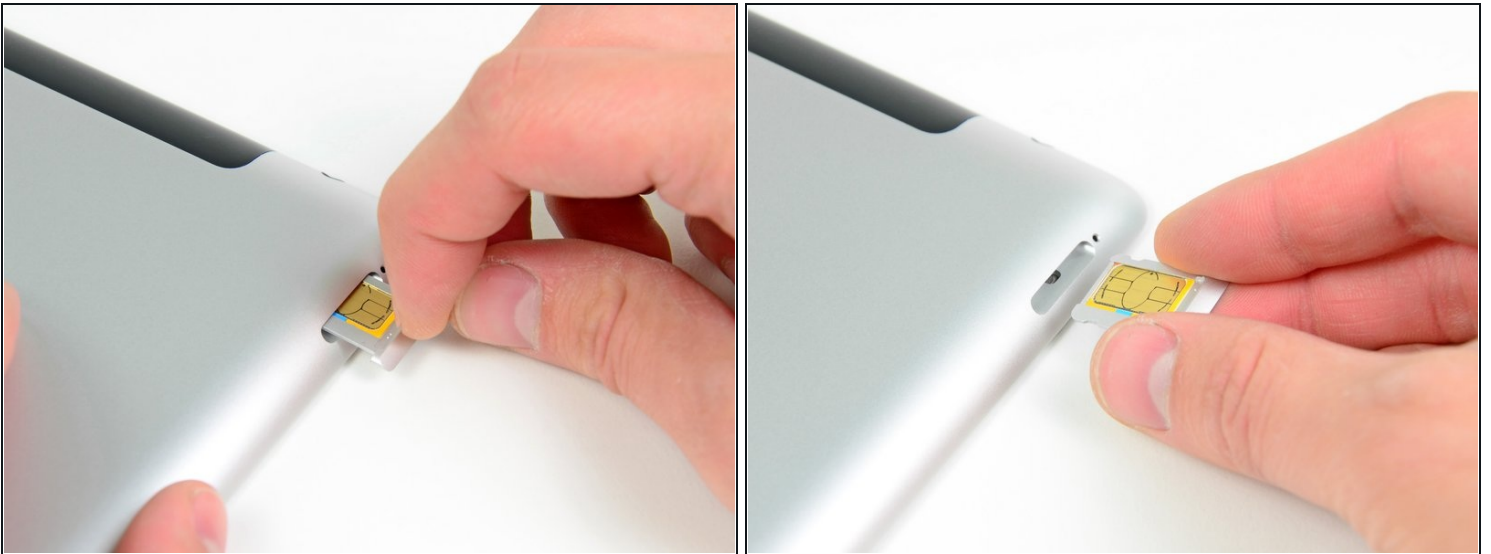
- Fill a pot or pan with enough water to fully submerge an iOpener.
 - Heat the water to a boil. **Turn off the heat.**
 - Place an iOpener into the hot water for 2-3 minutes. Make sure the iOpener is fully submerged in the water.
 - Use tongs to extract the heated iOpener from the hot water.
 - Thoroughly dry the iOpener with a towel.
- ⚠ The iOpener will be very hot, so be careful to hold it only by the end tabs.
- Your iOpener is ready for use! If you need to reheat the iOpener, heat the water to a boil, turn off the heat, and place the iOpener in the water for 2-3 minutes.

Step 5 — SIM Card



- Use a SIM eject tool or an uncoiled paperclip to eject the SIM card tray.

Step 6



- Pull the SIM tray out of its slot and remove it from the iPad 2.
- ☒ If replacing the SIM card, pop it out of its tray and install the new one.

Step 7 — Front Panel



- If your display glass is cracked, keep further breakage contained and prevent bodily harm during your repair by taping the glass.
- Lay overlapping strips of clear packing tape over the iPad's display until the whole face is covered.
 - ⓘ This will keep glass shards contained and provide structural integrity when prying and lifting the display.
- Do your best to follow the rest of the guide as described. However, once the glass is broken, it will likely continue to crack as you work, and you may need to use a metal prying tool to scoop the glass out.

⚠ Wear safety glasses to protect your eyes, and be careful not to damage the LCD screen.

Step 8



⚠ Again, as you may find yourself working with broken glass during this procedure, we strongly recommend wearing [safety glasses](#) for protection from flying shards.

- Lay the iOpener flat on the right edge of the iPad, smoothing it out so that there is good contact between the surface of the iPad and the iOpener.
- Let the bag sit on the iPad for approximately 90 seconds before attempting to open the front panel.

Step 9



- There is a small gap in the iPad's adhesive ring in the upper right corner of the iPad, approximately 2.0 inches (~5 cm) from the top of the iPad. You are going to exploit this weakness.
- Align the tool with the mute button. Insert the tip of a plastic opening tool into the gap between the front glass and the plastic bezel. Just insert the very tip of the opening tool, just enough to widen the crack.
- ⓘ It may require some force to get the wedged tip of the opening tool between the glass and plastic. Work patiently and carefully, wiggling the plastic opening tool back and forth as necessary.

Step 10



- Make sure you place the tool in the proper spot—between the plastic display bezel and the front panel glass.

Step 11



- Keeping the tip of the plastic opening tool wedged between the front glass and plastic bezel, slide a plastic opening pick in the gap, right next to the plastic opening tool.

Step 12



- Remove the plastic opening tool from the iPad, and push the opening pick further underneath the front glass to a depth of ~0.5 inches.

Step 13



- While you work on releasing the adhesive on the right side of the iPad, reheat the iOpener, and replace it on the bottom edge of the iPad.

Step 14



- While the bottom edge is being heated by the iOpener, begin releasing the adhesive from the right edge of the iPad.
- Slide the opening pick down along the edge of the iPad, releasing the adhesive as you go.

⚠ The adhesive is very strong, and some serious force may be required. Work carefully.

- ⓘ If you can see the tip of the opening pick underneath the front glass, pull the pick out just a little bit. While using the opening pick this deep won't damage anything, it may get adhesive residue all over the LCD.

Step 15



- ① It may be necessary to move the heated iOpener back onto the right edge of the iPad as you release the adhesive. This depends on how long the iPad has been able to cool while you were working on it.
- If the opening pick gets stuck in the adhesive, "roll" the pick along the side of the iPad, continuing to release the adhesive.

Step 16



- Before removing the first opening pick from the bottom corner of the iPad, insert a second pick under the right edge of the front glass to keep the adhesive from re-adhering.
- Re-heat the iOpener, and move it to the top edge of the iPad.

Step 17



★ The next few steps require extreme caution.

⚠ The Wi-Fi antenna is attached to the bottom right edge of the rear case of the iPad via screws and a cable. Because of the orientation of the Wi-Fi antenna, it is imperative to proceed with caution otherwise irreversible damage to the Wi-Fi antenna may result.

- You will have to release the adhesive securing the antenna to the front panel without damaging the delicate parts attaching the antenna to the bottom of the iPad. Follow the next steps carefully.

Step 18



- Slide the opening pick around the bottom right corner of the iPad, releasing the adhesive there.

⚠ Do not slide the pick further than the bottom right corner. You may damage the Wi-Fi antenna by doing so.

Step 19



- ⚠ This step requires you to move the opening pick along the bottom right edge of the front panel. The Wi-Fi antenna is very close to the corner and is easily severed if the adhesive is released improperly.**
- ⓘ Do not completely remove the pick from under the front glass, but pull it out just a little bit so that ~1/8" (3 mm) of the tip is still under the front glass.**
- Slide the tip of the opening pick along the bottom edge of the iPad, releasing the adhesive over the Wi-Fi antenna.

Step 20



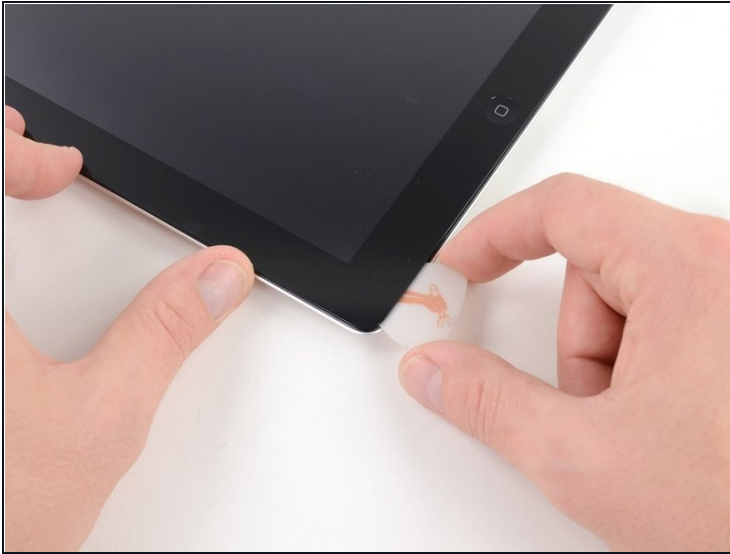
- Once you have moved past the Wi-Fi antenna (approximately 3" (75 mm) from the right edge, or right next to the home button) re-insert the opening pick to its full depth.
- Slide the pick to the right, releasing the adhesive securing the Wi-Fi antenna to the front glass.
- The antenna is attached to the bottom of the iPad via screws and a cable. This step detaches the antenna from the front panel, ensuring that when you remove the panel, the antenna will not be damaged.

Step 21



- Continue releasing the adhesive along the bottom of the iPad, pulling the opening pick out far enough to go around the home button, and re-inserting it to a depth of 1/2 inch (10 mm) once the pick is past the home button.
- ⓘ If the adhesive has cooled too much along the bottom edge, reheat the iOpener to warm the adhesive where you are working.
- ⚠ Do not heat the iOpener more than a minute at a time, and always allow at least two minutes before reheating it.

Step 22



- Continue releasing the adhesive all the way along the bottom edge of the iPad.
⚠ On iPad 4 models, insert the pick to a maximum depth of 1/2 inch (10 mm) in this area, to avoid damaging the home button ribbon cable.
- Leave the opening pick wedged underneath the front glass near the home button.

Step 23



- Reheat the iOpener in the microwave and set it on the left edge of the iPad to start warming the adhesive in that section.

Step 24



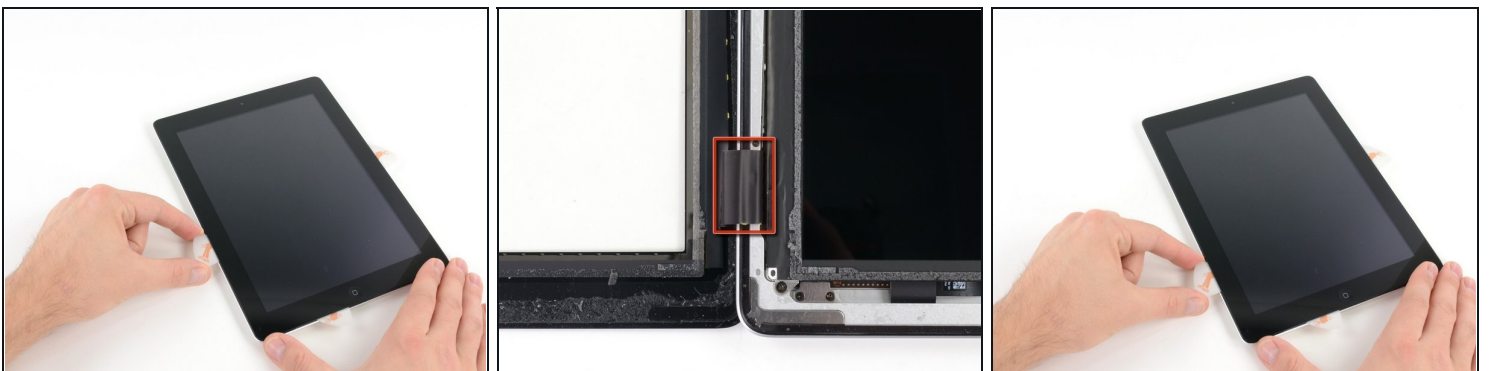
- Slide the opening pick along the top edge of the iPad, pulling it out slightly to go around the front-facing camera bracket.
- The adhesive along this section is very thick, and a fair amount of force may be required. Work carefully and slowly, making sure to not slip and damage yourself or your iPad.
- ⓘ If the adhesive has cooled too much, replace the iOpener along the top edge and continue working. If the iOpener has cooled too much, reheat it.
- ☑ If the opening pick is getting stuck in the adhesive, "roll" the pick as shown in [step 9](#).

Step 25



- Continue releasing the adhesive along the top edge of the iPad, and slide the opening pick around the top left corner.
- ⓘ If the adhesive is warm enough, remove the iOpener from the iPad for convenience. However, if the adhesive is still quite sticky, re-heat the iOpener and lay it on the left edge while you work.

Step 26



- Slide the opening pick along the left edge of the iPad, releasing the adhesive as you go. The adhesive is thin here due to the digitizer along the whole left side. Make sure the pick is not too deep (max 1/2 inch) 10 mm to prevent damaging the digitizer.

⚠ The digitizer cable is located approximately 2" (50 mm) from the bottom of the iPad. Stop sliding the pick when you get ~2.25" (60 mm) from the bottom of the iPad.

Step 27



- Using the opening pick that is still underneath the bottom edge of the iPad, release the adhesive along the bottom left corner.

⚠ The bottom of the digitizer cable is only ~1" (25 mm) from the bottom of the iPad. Work carefully and slowly, making sure to not sever this cable.

Step 28



- Using one of the opening picks, pry up the bottom right corner of the iPad and grab it with your fingers.
- ⓘ Some of the adhesive along the perimeter of the iPad may have stuck back down again. If this is the case, slide a pick underneath the edge of the iPad where the front glass is still stuck and "cut" the adhesive.

Step 29

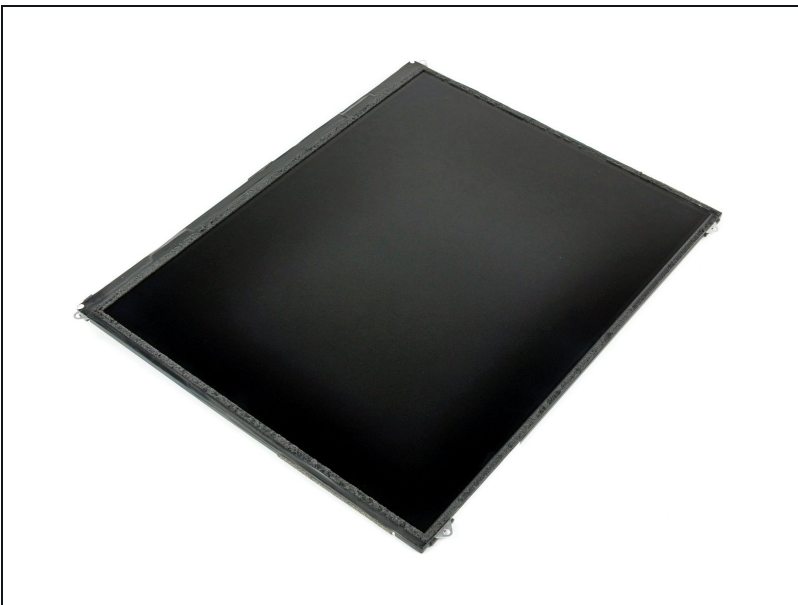


- Holding the iPad by the top and bottom right corners, rotate the front glass away from the iPad.

⚠ Be careful of any adhesive that may still be attached, and use an opening pick to cut any adhesive that may still be holding the front panel down.

- ☑ During reassembly use a [microfiber cloth](#) and compressed air to clean any dust or fingerprints off the LCD before reinstalling the glass.

Step 30 — LCD



- LCD remains.
- The foam around the LCD should be replaced when it is reinstalled in another device. It provides separation between the digitizer and the LCD, which helps prevent "ghost" touching.

Step 31 — Front Panel Assembly



- Use the edge of a plastic opening tool to carefully flip up the retaining flaps on the two digitizer ribbon cable ZIF sockets.

⚠ Be sure you are prying up on the hinged retaining flaps, **not** the sockets themselves.

ⓘ The retaining flaps are highlighted in red in the second picture.

Step 32



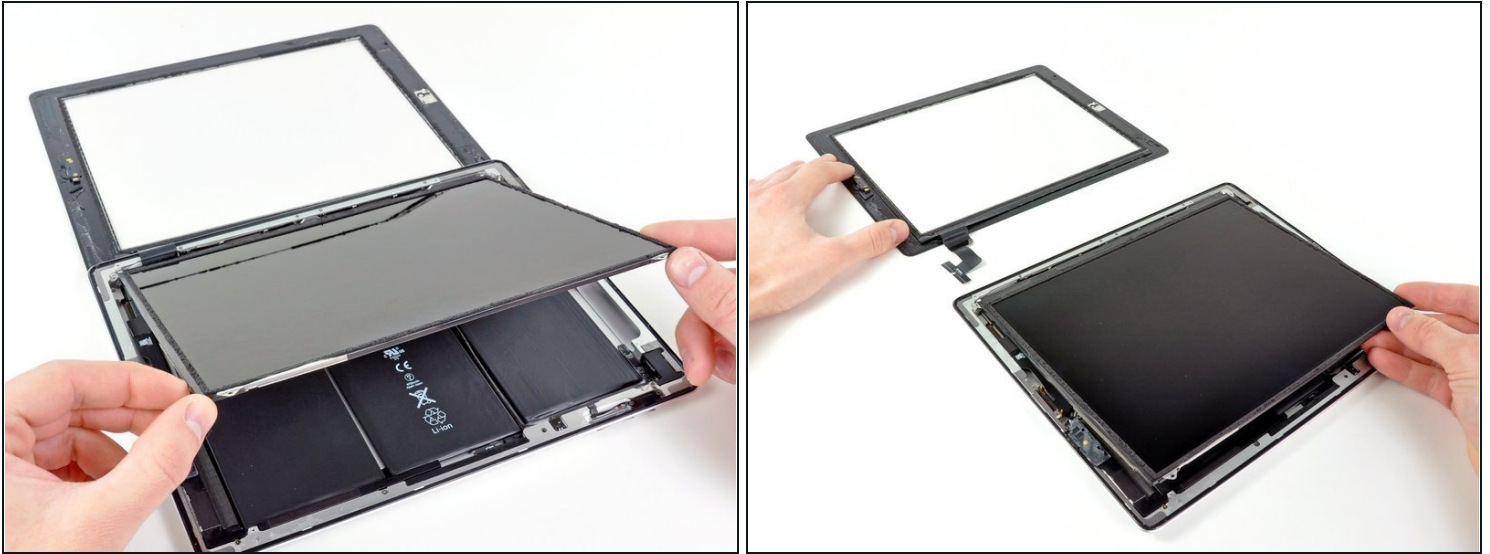
- Use the edge of a plastic opening tool to peel the digitizer cable off the shields on the logic board.
- Carefully pull the digitizer cable off the adhesive securing it to the side of the rear case.

Step 33



- Pull the digitizer ribbon cable straight out of its two sockets on the logic board.

Step 34



ⓘ In order to remove the front panel assembly, the ribbon cable needs to slide out between the case and the LCD. You'll need to move the LCD to make some room.

⚠ Be very careful when moving the LCD, and do not attempt to remove it from the iPad—its cable will remain connected while it is rotated over.

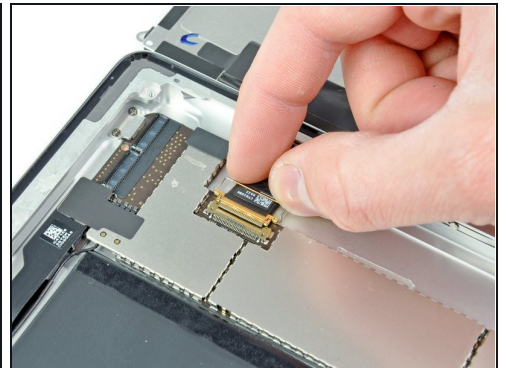
- Lift the LCD from its long edge farthest from the digitizer cable and gently flip it toward the rear case—like closing a book.
- While holding the LCD up, gently slide the front panel away from the iPad. Be careful not to snag the digitizer cable on the rear case or LCD.
- Set the LCD back into the body for safekeeping.

Step 35 — LCD Assembly



- ❗ In order to work on the iPad's innards, we need to flip the LCD back out of the case.
- Lift the LCD from its long edge closest to the volume buttons and gently flip it out of the rear case—like turning the page in a book.
- Set the LCD face down on a clean surface. You may want to rest it on a soft cloth to prevent scratches.

Step 36 — LCD Assembly



- Carefully lay the LCD next to the rear panel.
- Use a plastic opening tool to lift the display data cable lock upwards.
- Pull the display data cable out of its socket.

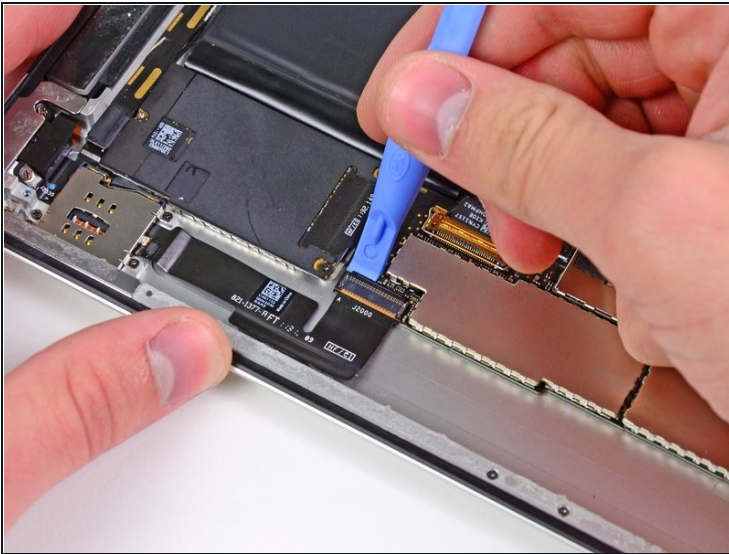
⚠ Do not pull the connector upward as you disconnect it from its socket.

Step 37



- Remove the LCD assembly from the rear panel assembly.

Step 38 — Headphone Jack & SIM Slot

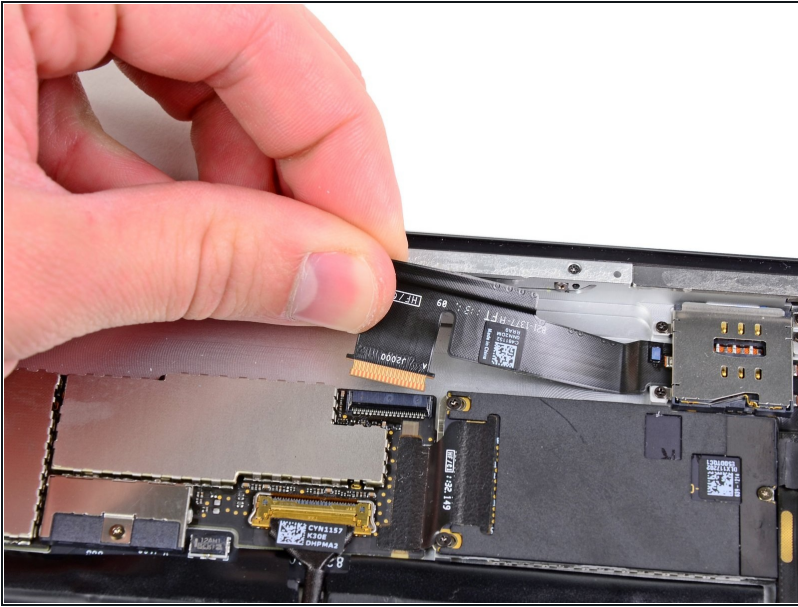


- Use the edge of a plastic opening tool to flip up the retaining flap on the headphone jack and front camera cable ZIF socket.

⚠ Be sure you are prying upward on the hinged retaining flap, **not** the socket itself.

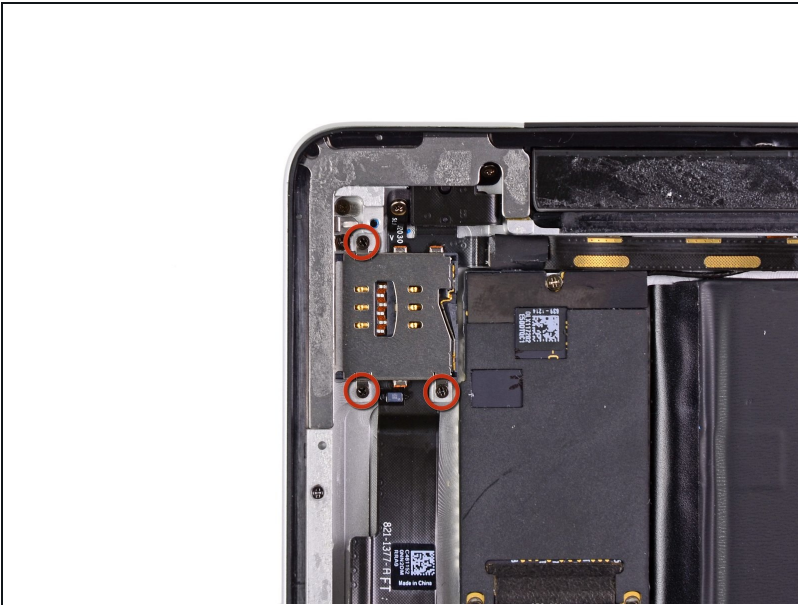
- Peel the headphone jack and front camera cable off the rear case.

Step 39



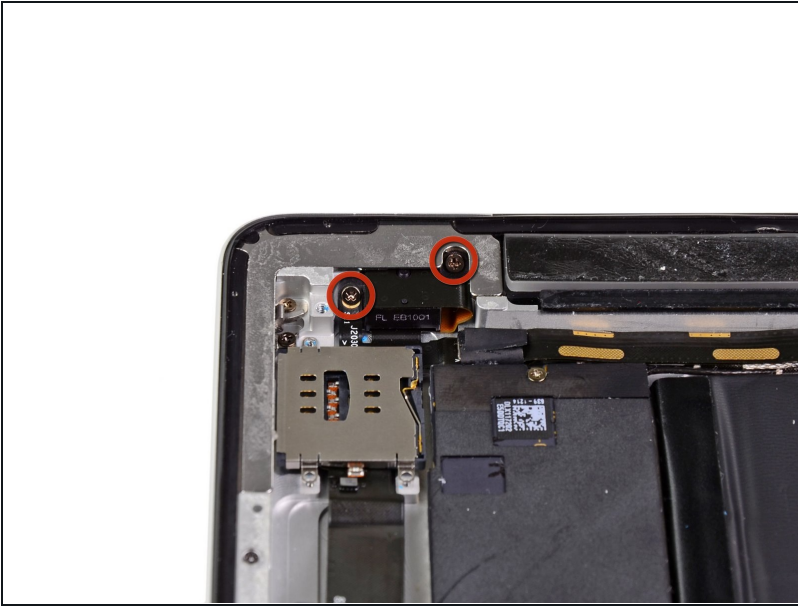
- Pull the headphone jack and front camera ribbon cable straight out of its socket on the logic board.

Step 40



- Remove the three 2 mm Phillips screws securing the SIM card slot to the rear panel.

Step 41



- Remove the two 2.9 mm Phillips screws securing the headphone jack to the top edge of the rear panel.

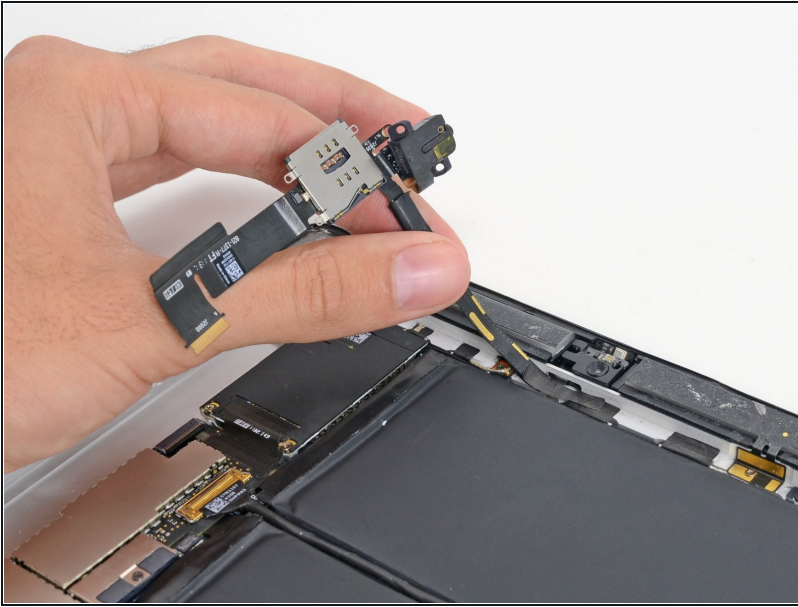
Step 42



- Use a plastic opening tool to help pull the headphone jack out of its recess in the top of the rear panel.

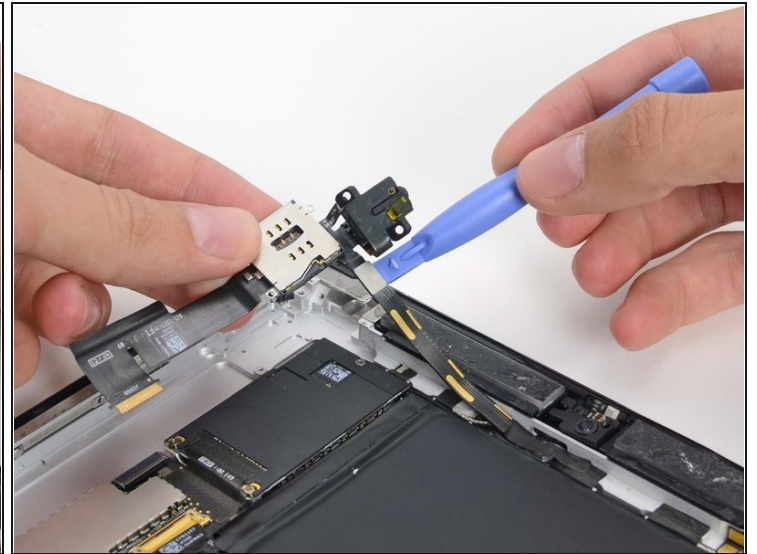
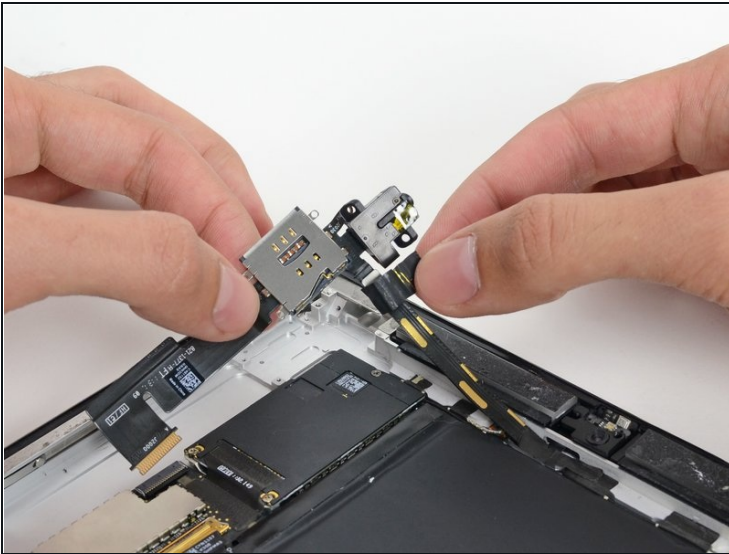
⚠ Don't try to remove the assembly just yet, the ribbon cables are still connected.

Step 43



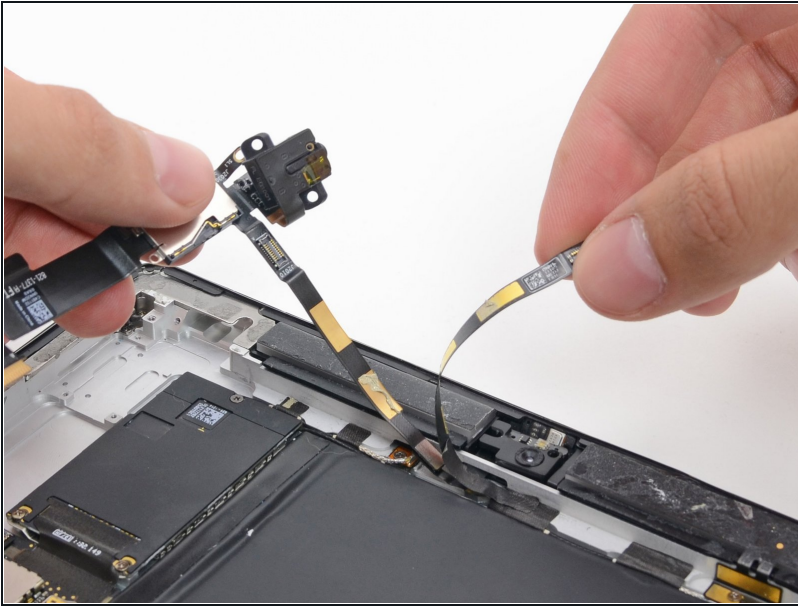
- Peel the front camera and microphone cables off the rear panel.

Step 44



- Carefully remove the strip of tape covering the front camera cable connector.
- Use a plastic opening tool to disconnect the front camera cable from the microphone cable immediately below it.

Step 45



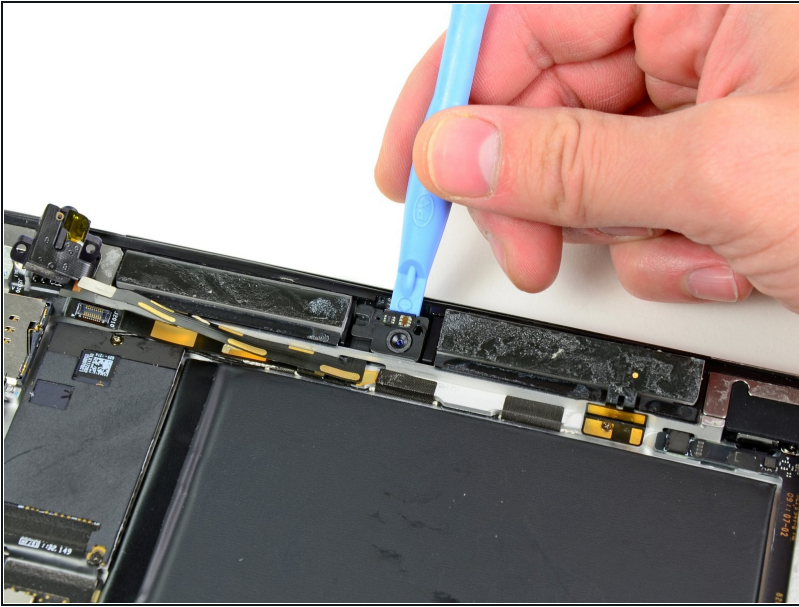
- Peel the front camera cable off the microphone cable.

Step 46 — Front Facing Camera



- Remove the piece of tape highlighted in red.
- ⚠ Be careful not to damage the camera, microphone, or headphone jack ribbon cables as you remove the tape.

Step 47



- Peel the front camera off the foam adhesive securing it to the rear panel.

Step 48



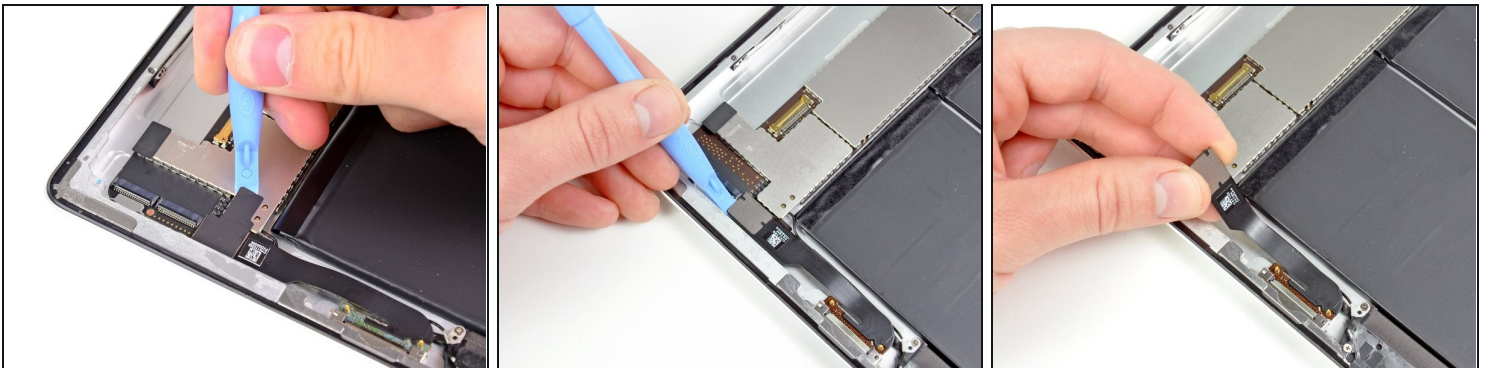
- Pull the front facing camera cable out from the channel cut into the rear panel.
- Remove the front facing camera from your iPad.

Step 49



- Use a plastic opening tool to disconnect the microphone cable connector.
- Remove the headphone jack/SIM slot from the device.

Step 50 — Logic Board



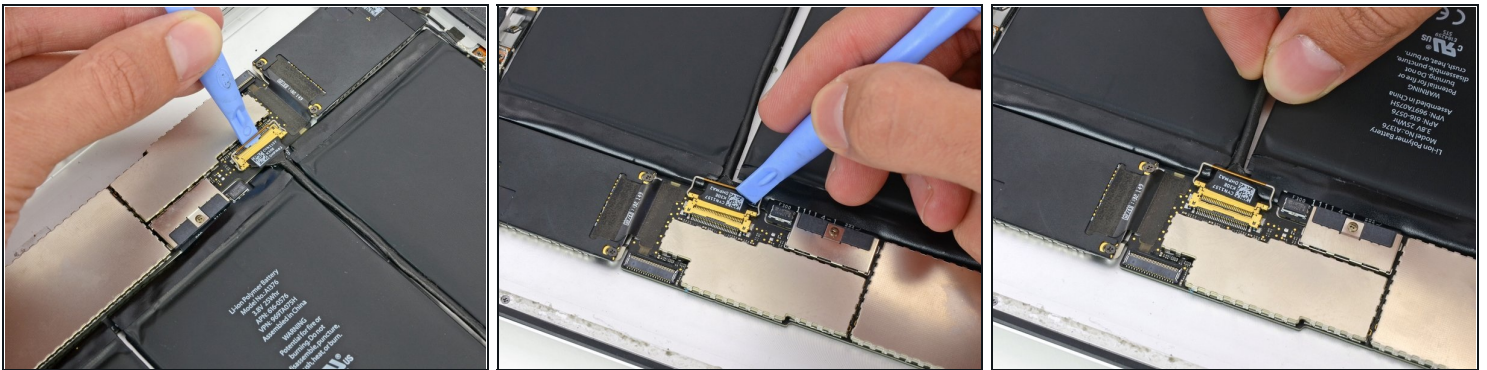
- If present, remove the piece of tape covering the end of the dock connector cable.
- Use the edge of a plastic opening tool to carefully pry the dock connector cable's connector up from its socket on the logic board.
- Peel the dock connector ribbon cable off the rear panel.

Step 51



- Place the prying tool beneath the 4 wires on the end of the connector and gently pry the speaker cable connector straight up from its socket on the logic board. Do not pry from the opposite end of the connector as this will break the 4 solder points on the underside of the socket and will require a microsolder repair.

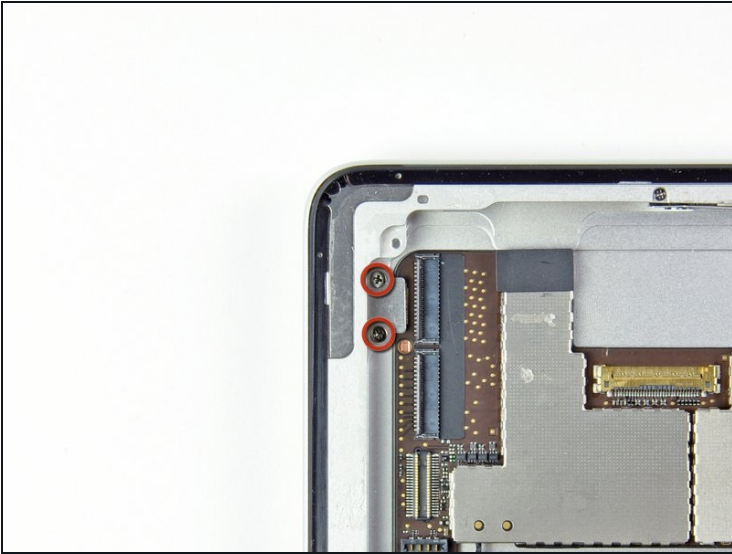
Step 52



- Use a plastic opening tool to flip up the retainer securing the upper component board cable connector to its socket on the logic board.
- Pull the connector away from its socket on the logic board.

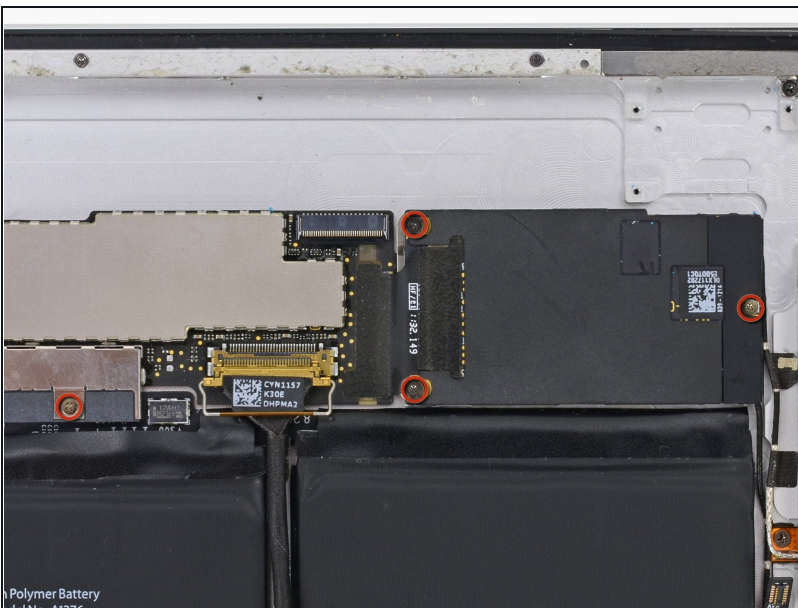
⚠ Do not lift the cable upward as you disconnect it.

Step 53



- Remove the two 2.1 mm Phillips screws securing the logic board bracket to the rear case near the digitizer cable socket.
- Remove the logic board bracket from the rear case.

Step 54



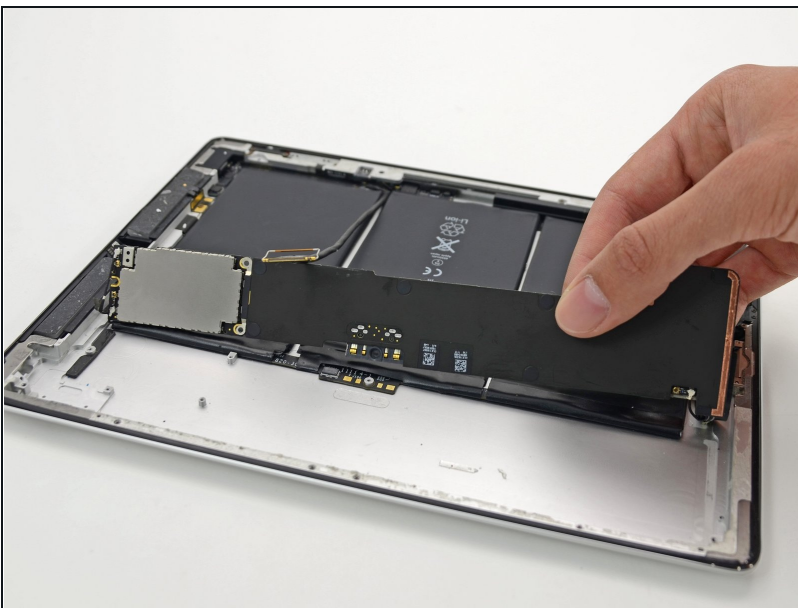
- Remove the four 2.6 mm Phillips screws securing the logic and communications boards to the rear panel.

Step 55



- Use a plastic opening tool to gently pry the logic board up from the rear case.
- The logic board is adhered to the rear case; work slowly and uniformly to peel up the glue without damaging the board.

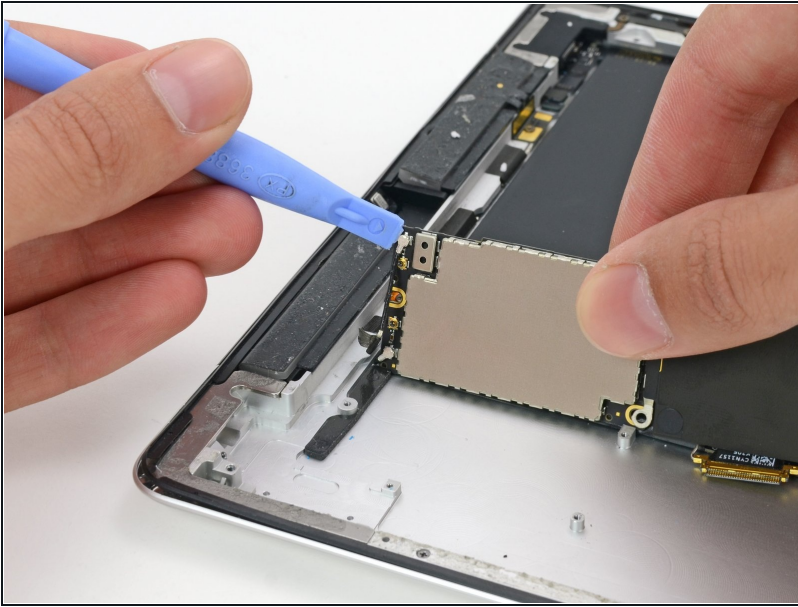
Step 56



- Lift the logic board out from the rear case, and rotate it slightly toward the battery.

⚠ Do not try to completely remove the logic board. There are still three antenna cables attached to it.

Step 57 — Left Cellular Data Antenna



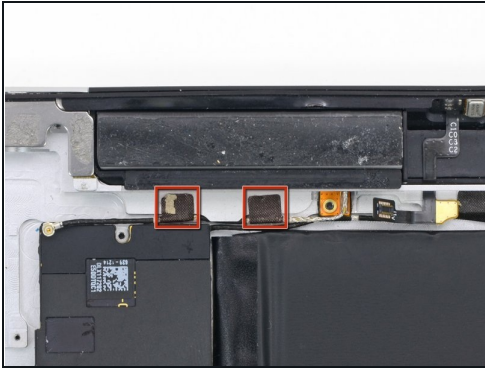
- Use a plastic opening tool to disconnect the cellular data antenna cable from its socket on the communications board.

Step 58



- Remove the single 2.1 mm Phillips screw securing the cellular data antenna cable to the rear case.

Step 59



⚠ In this step you will remove the two pieces of tape securing the cellular data antenna cable to the rear case.

- Use the tip of a spudger to remove the two pieces of tape.

Step 60



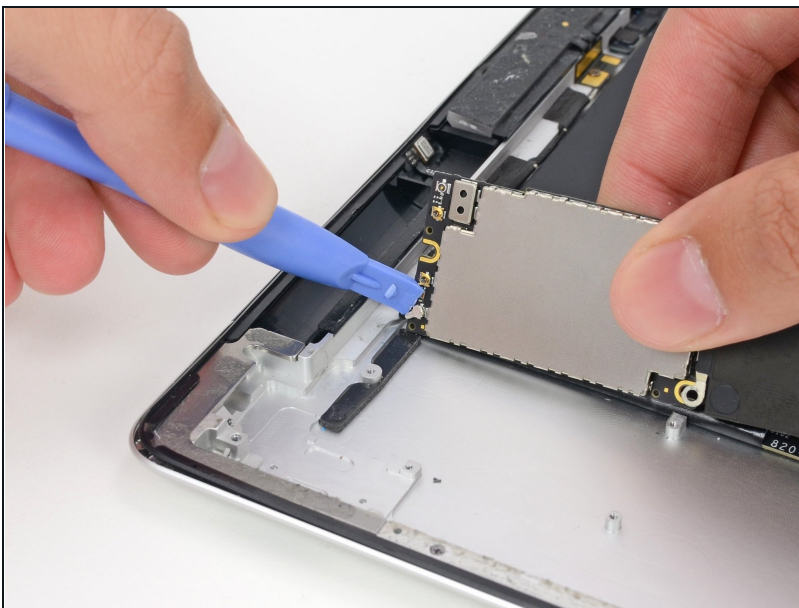
- Gently pry the cellular data antenna from the rear case with a plastic opening tool.

Step 61



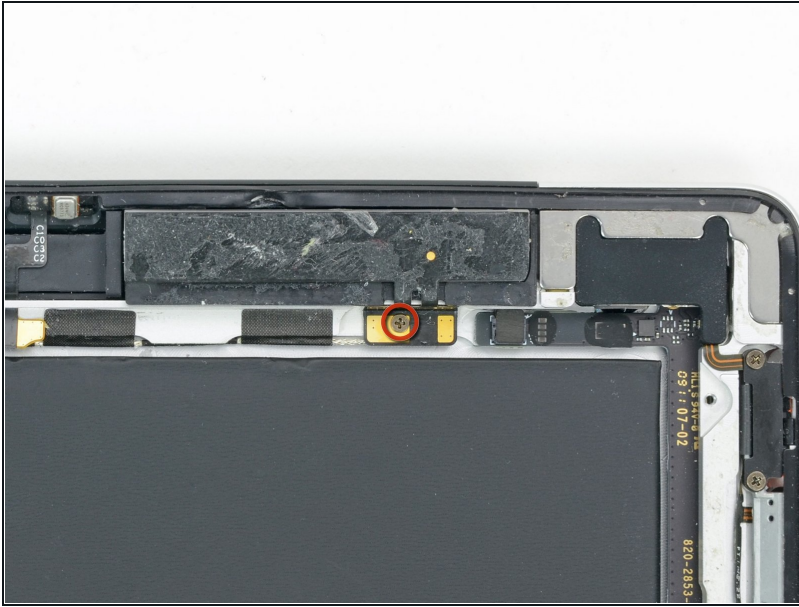
- Lift the cellular data antenna out of its recess in the iPad casing.
- Gently pull the cellular data antenna cable through the channel cut in the rear panel, and remove the antenna from the device.

Step 62 — Right Cellular Data Antenna



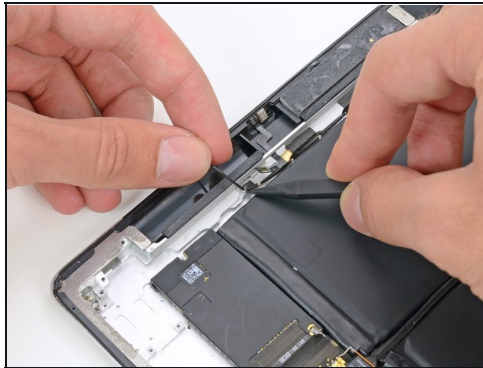
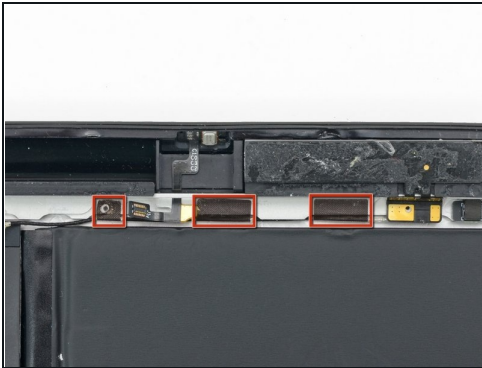
- Use a plastic opening tool to disconnect the right antenna cable from its socket on the communications board.

Step 63



- Remove the single 2.1 mm Phillips screw securing the right cellular antenna to the rear case.

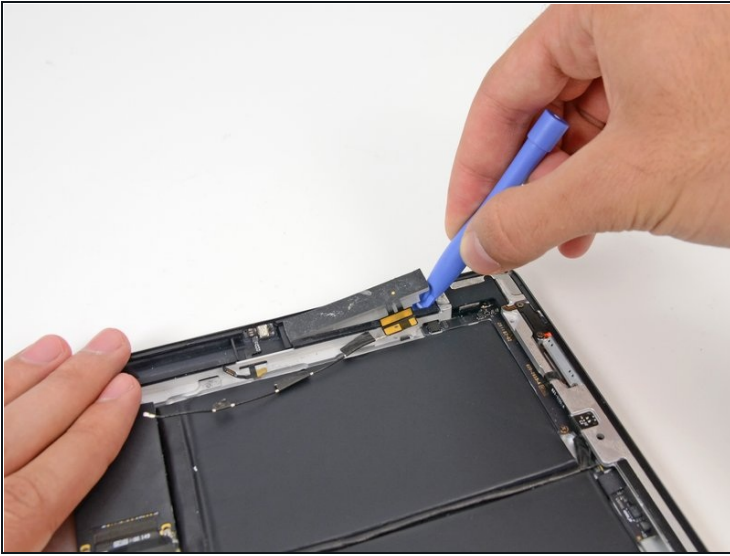
Step 64



⚠ In this step you will remove the three pieces of tape securing the right cell antenna cable to the rear case.

- Use the tip of a spudger to start each piece, and then the flat end to smoothly peel the tape up without tearing it.

Step 65



- Gently pry the antenna from the rear case with a plastic opening tool.
- Lift and remove the right cellular data antenna from the iPad 2.

Step 66 — GPS Antenna



- Remove any tape covering the GPS antenna ZIF connector.

Step 67



- Use the tip of a spudger to flip the retaining tab on the ZIF connector to release the GPS cable.

Step 68



- Place a reheated iOpener on the top edge of the iPad to soften the adhesive holding the GPS antenna to the rear case.
- ⓘ The GPS antenna is essentially a sticker covering the bottom of the right cellular data antenna's compartment. As you work to pry it out in the following steps, there is a good chance that it will tear and break. If you are attempting to salvage the antenna, use plenty of heat and be very careful.

Step 69



- Insert the pointed end of a spudger under the GPS cable from the interior of the antenna recess.
- Pull the spudger toward the top edge of the case to thread the cable out of the slot from the main body of the case.

Step 70



- ⓘ Removing the GPS antenna can be very challenging. The method shown in the following steps is one that worked for us. However, you should only follow this guide if you are replacing the GPS antenna with a new one, as this could irreparably damage the antenna.
- Using a set of [tweezers](#), gently lift the GPS antenna cable to begin peeling the antenna off of the rear case.

Step 71



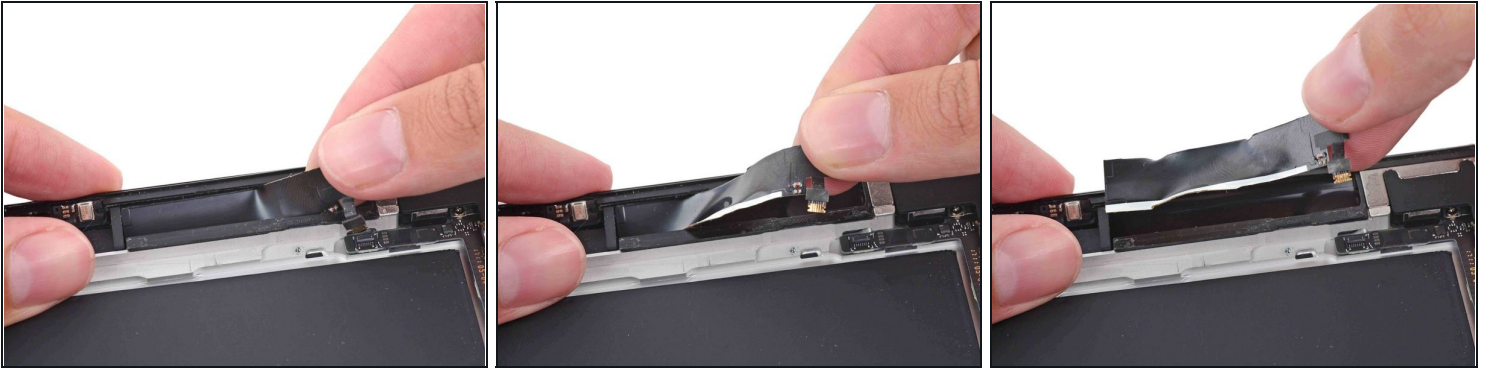
- Place the flat end of a spudger under the freed end of the GPS antenna.
- Push the spudger under the antenna sticker to separate the adhesive holding it to the case.

Step 72



- Continue to push the spudger under the antenna to clear it of adhesive.

Step 73



- As soon as you can grip the GPS antenna with your fingers, peel it up off the rear case to remove it.
-

To reassemble your device, follow these instructions in reverse order.