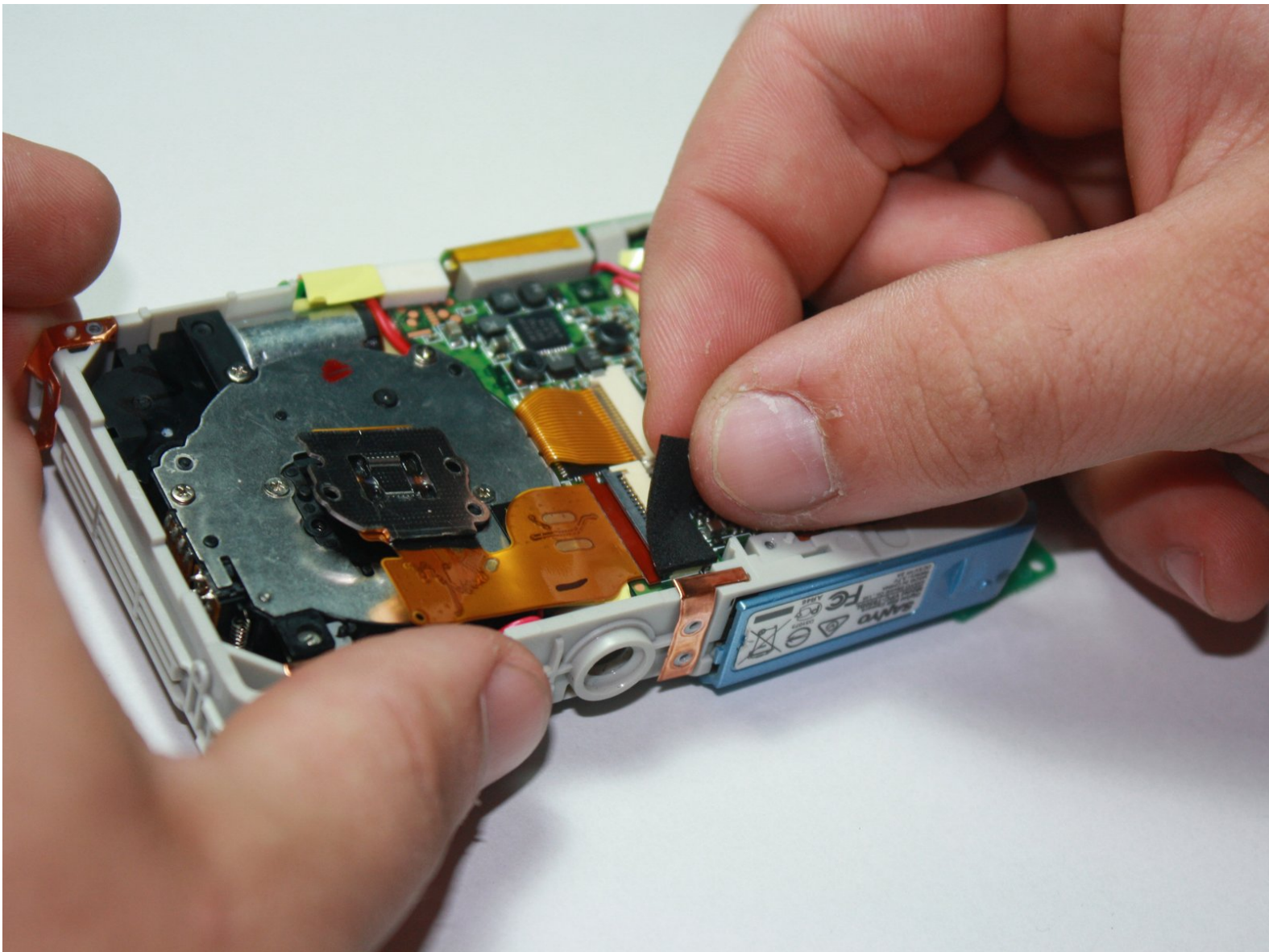




# Sanyo VPC-T850 Photo Array Device Replacement

Written By: Jonathan Yau



---

## INTRODUCTION

Instructions on how to remove the photo array device from the Sanyo VPC-T850

---



### TOOLS:

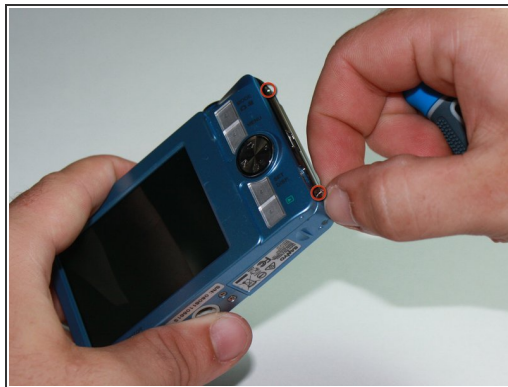
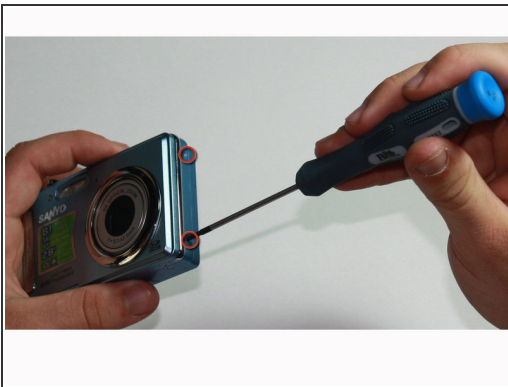
- [Phillips #00 Screwdriver](#) (1)
-

## Step 1 — Disassembling Sanyo VPC-T850 Outer Casing



- Turn the camera off by pressing the small, square button embedded in the top rim of the camera.
  - Locate the battery hatch on the bottom-right side of the camera and slide it outwards to open.
  - In the compartment, move the small notch and push down on the battery to remove it.
- ★ During reassembly, there is an arrow on the battery hatch indicating which way it goes in.

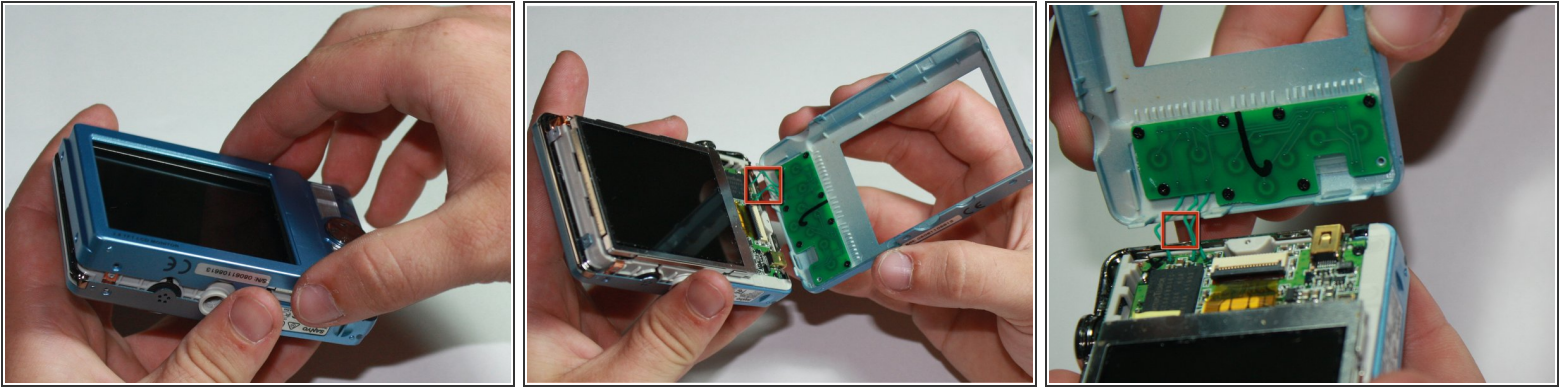
## Step 2 — Remove Screws



- Remove the eight screws around the sides and bottom of the camera using a Phillips #00 screwdriver.



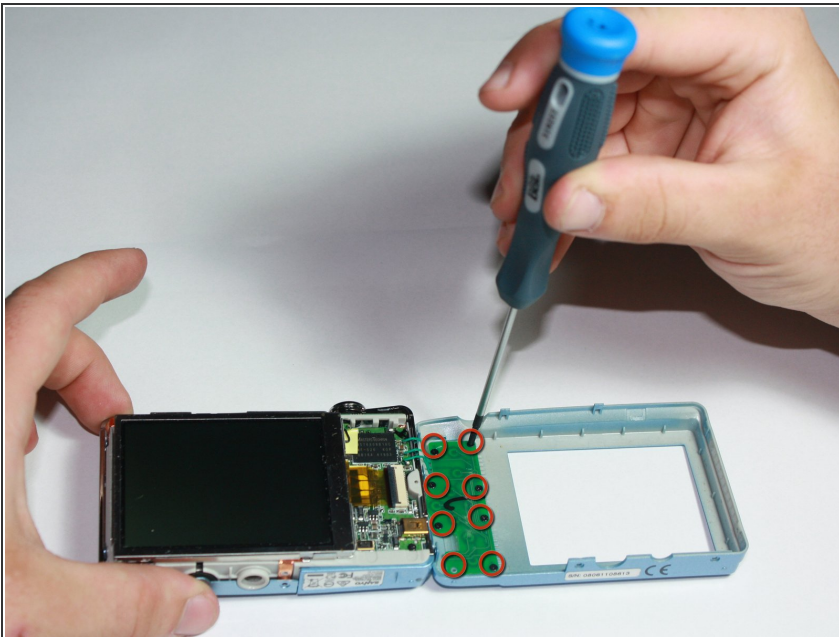
### Step 3 — Remove Rear Panel



- Using the spudger, gently pry the rear panel away from the left side.

**⚠ Be careful not to damage the three green cables as you remove the rear panel of the camera.**

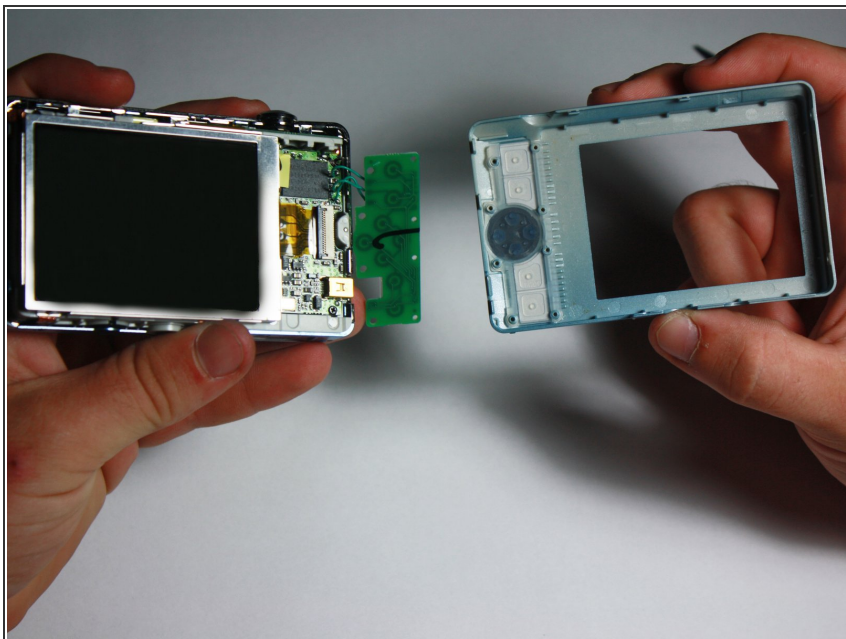
### Step 4



- Using the Phillips #00 screwdriver, remove the eight black screws connecting the green keypad chip to the rear panel.

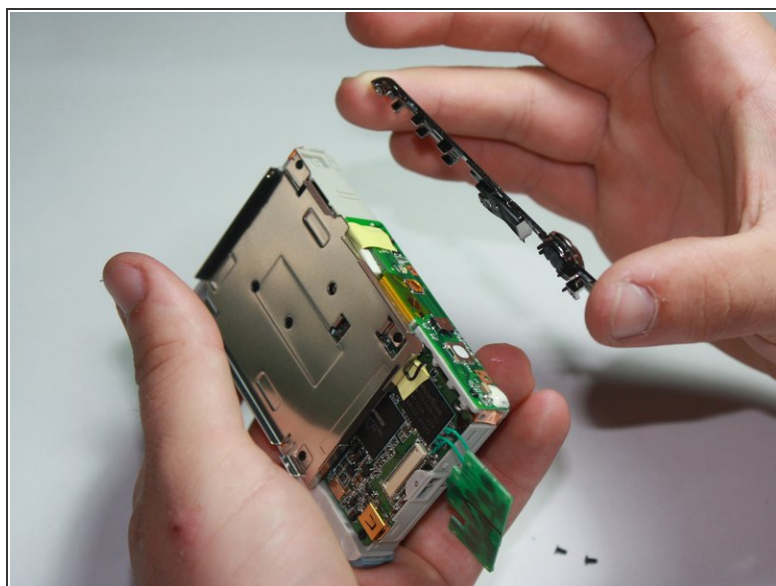
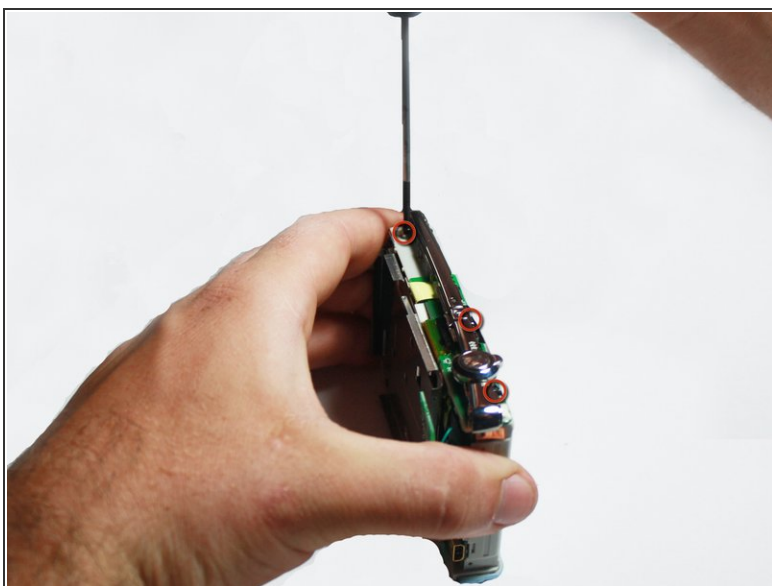
**⚠ Do not put any excessive force on the green wires.**

## Step 5



- Separate the rear panel from the rest of the camera.

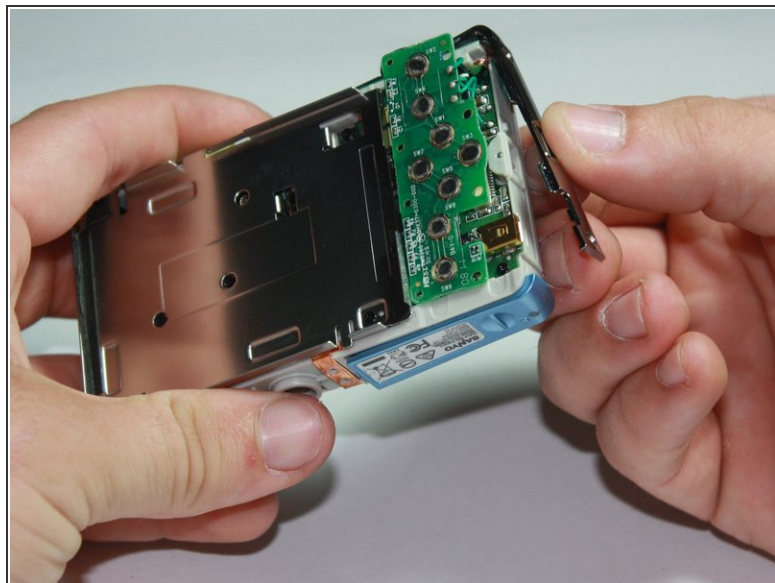
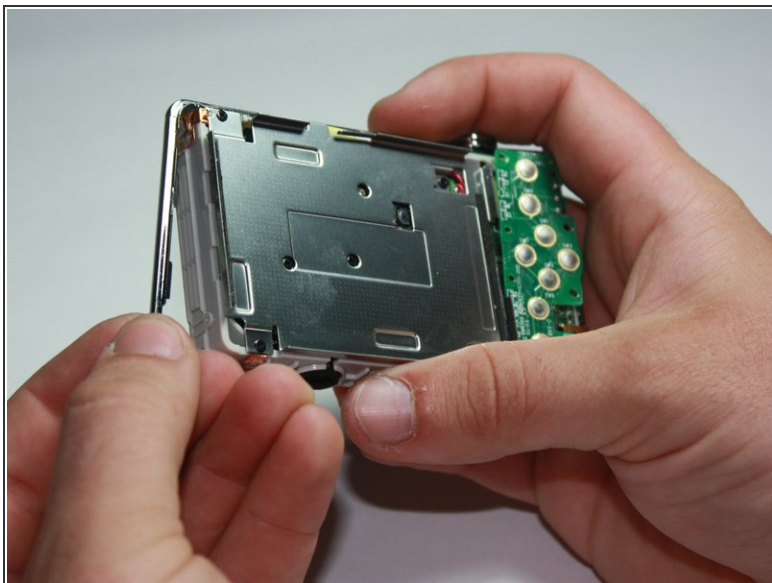
## Step 6



- Using the Phillips #00 screwdriver, remove the 3 screws located across the top of the camera.
- Separate the black plastic panel from the camera. The camera button will be attached, so be gentle.

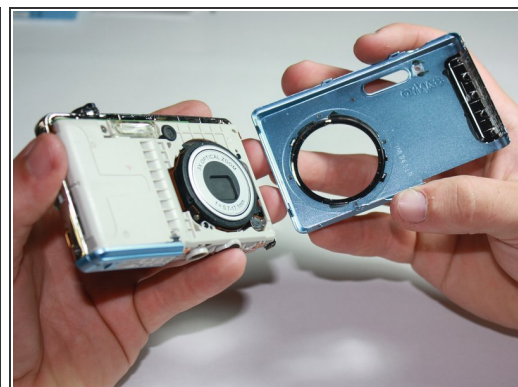
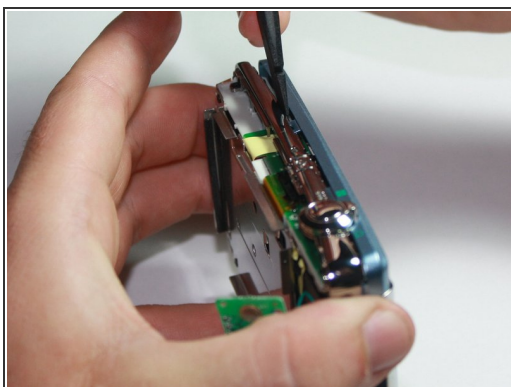


## Step 7



- Carefully pull off the side covers wrapped around the camera.

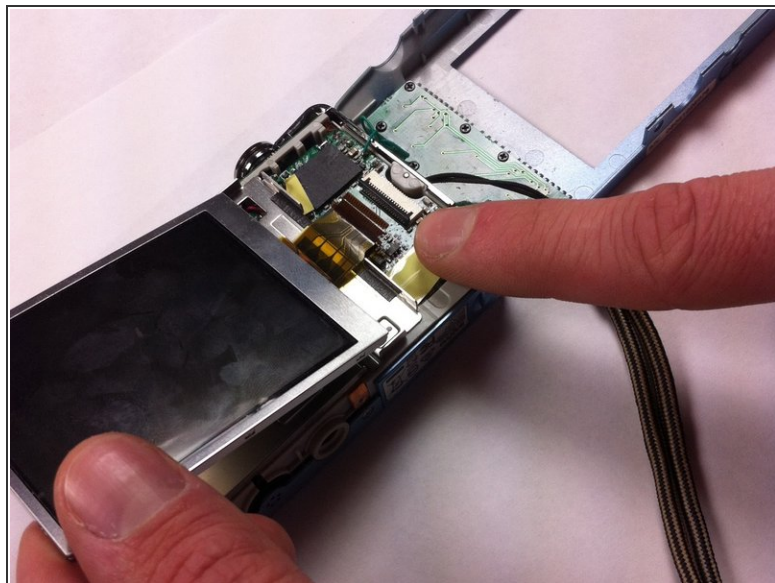
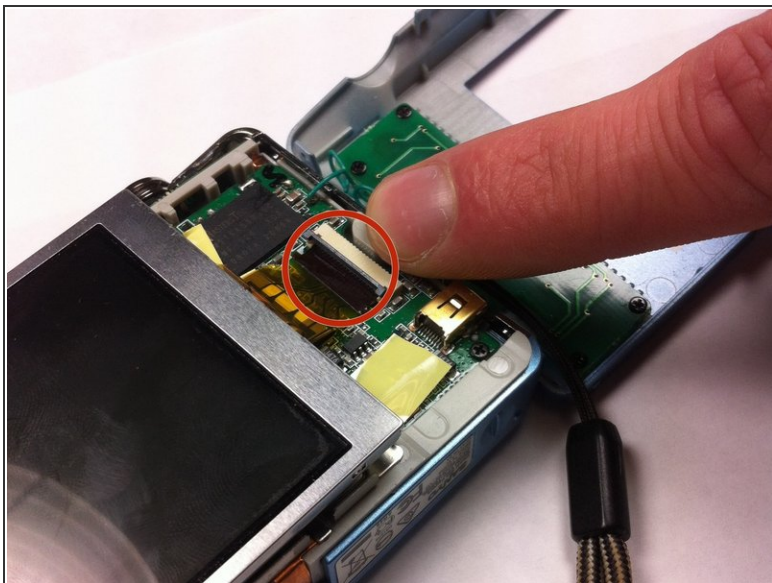
## Step 8 — Remove Front Cover



- Using the spudger, gently lift off the front cover of the camera.

**⚠ The front cover is fragile, so be gentle when removing it. It can easily break if not removed carefully.**

## Step 9 — Disconnect the Ribbon



**⚠ Use caution not to damage ribbon when disconnecting.**

- The yellow ribbon is attached to the right side of the screen and goes to a black connector piece.
- Gently flip the black connector away from the LCD screen to unlock the yellow ribbon.
- Carefully pull the yellow ribbon towards the LCD screen to disconnect it.

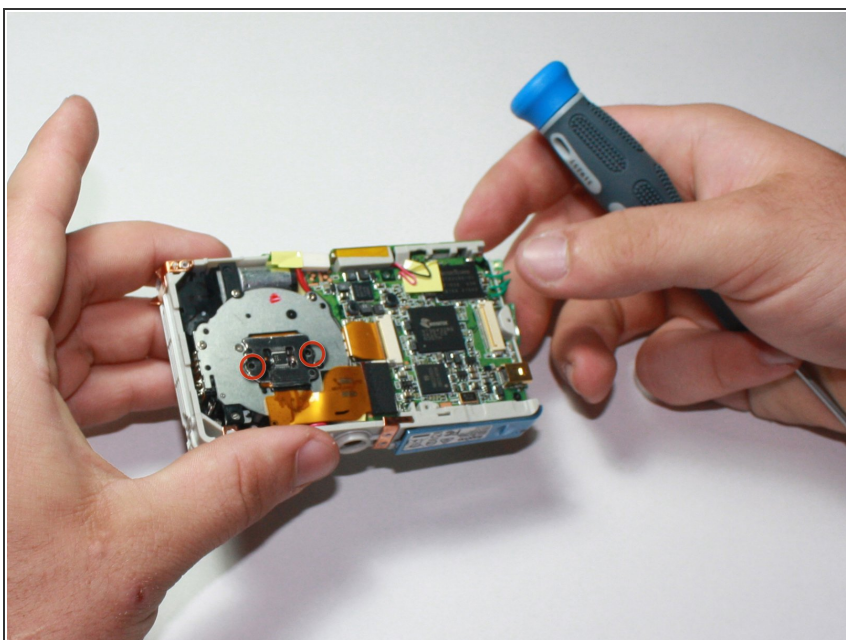


## Step 10 — Remove LCD Screen



- The LCD screen should now be disconnected from the rest of the camera and a pry tool can be used to lift it out of its casing.

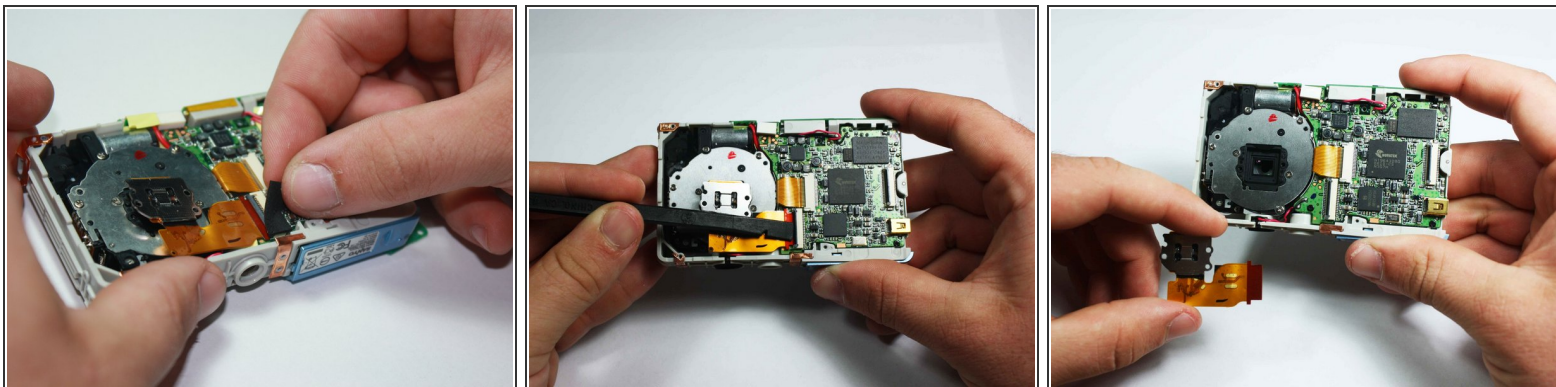
## Step 11 — Photo Array Device



- Remove the two screws holding the photo array.



## Step 12



- Remove the foam from the top of the wire connector.
- Gently remove the plastic connector in the same way as the previous connector of the same type.
- Lift the connector from the side with the ribbon cable in it.
- Using the spudger, gently push from the right side.

To reassemble your device, follow these instructions in reverse order.