



# PlayStation 4 Camera Teardown

How to open a PS4 Eye Camera

Written By: Schwarzstein



---

# INTRODUCTION

Before disassembling, unplug the Camera from the PS4.



## TOOLS:

- [Phillips #0 Screwdriver](#) (1)
  - [Tweezers](#) (1)
  - [flat Screwdriver](#) (1)
-

## Step 1 — PlayStation 4 Camera Teardown



- There are two PH0 Screws in the socket which hold the cable.
- Unscrew two PH0 Screws and pull off the cable holder.

## Step 2



- The next two PH0 Screws are located BEHIND the two polycarbonate-plates of the two camera-lenses. Take a sharp tweezer and stab under that plate. The plates are glued with a sticky tape to the housing. These plates are very fragile and will break if handled incautious.

## Step 3



- There is one more PH0 screw to remove. This one is behind the other lens.
- This was the easy part.

## Step 4



- There are many clips in there.

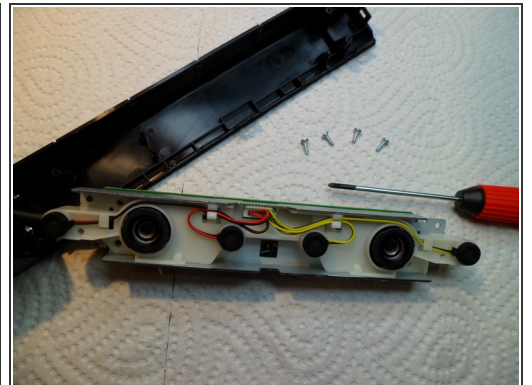
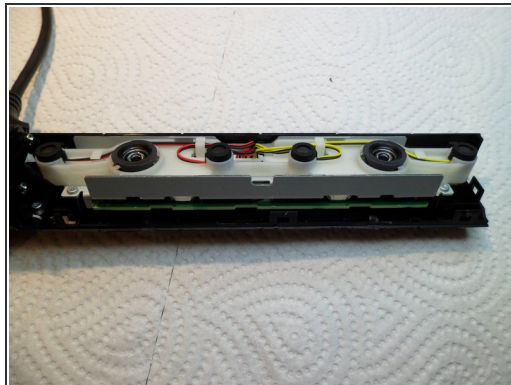
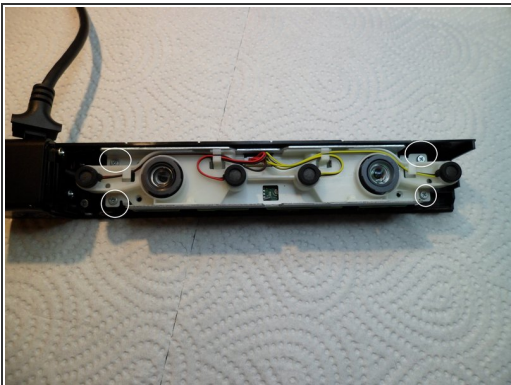


## Step 5



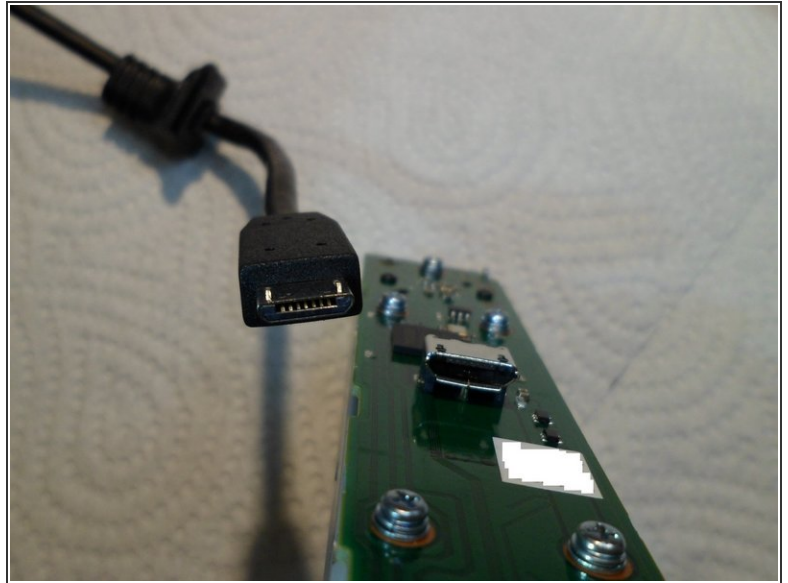
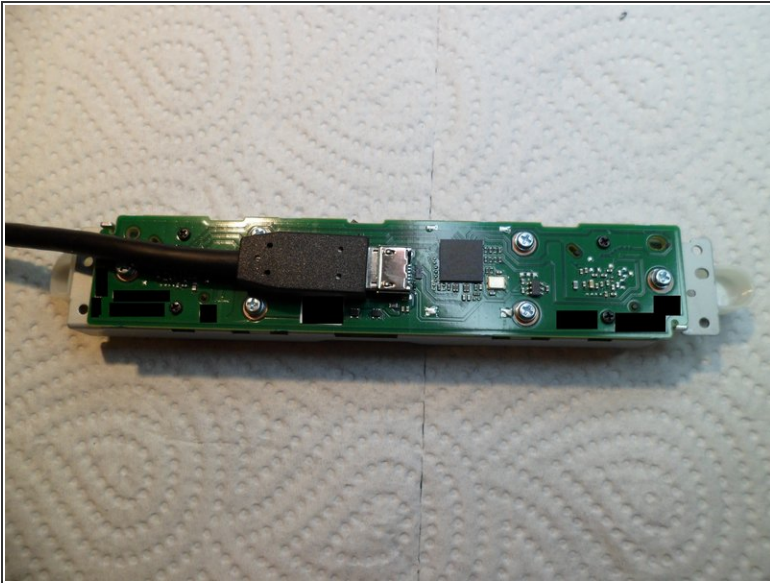
- Encore two photos where to locate these nasty clips

## Step 6



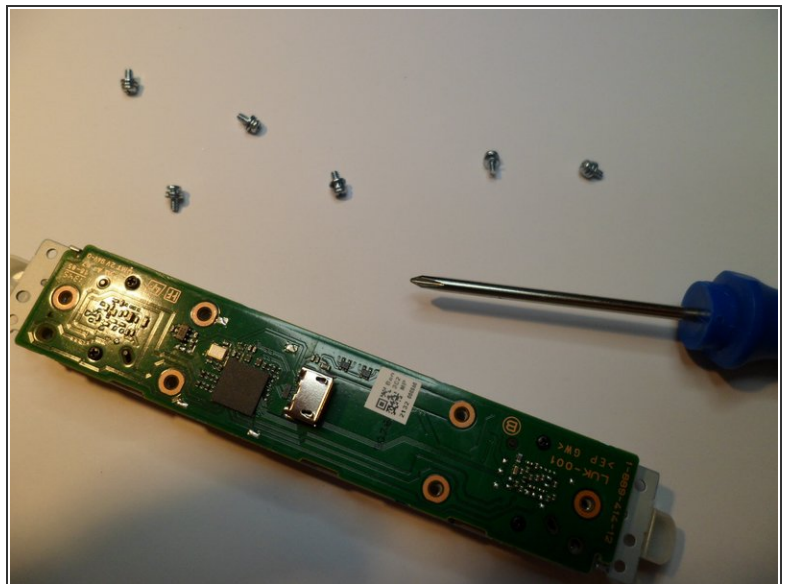
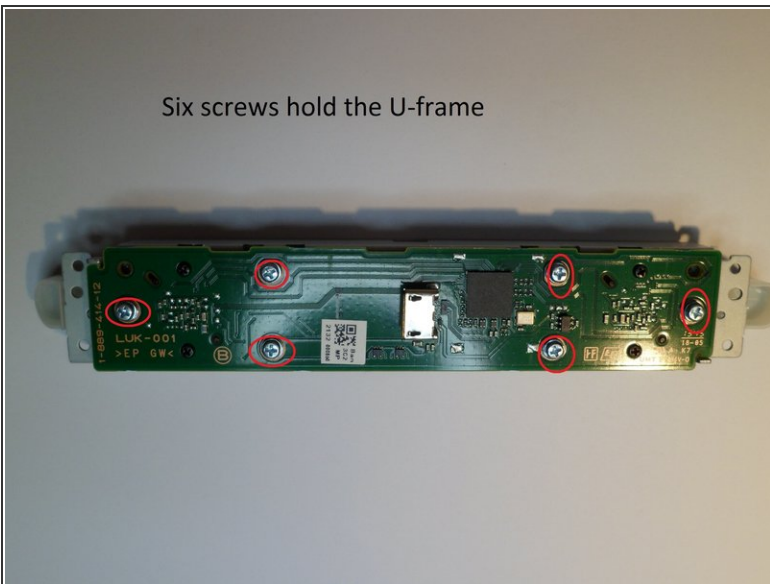
- The other half of the housing is attached to a solid U-Frame with the electronics.
- There are four silver screws, PH0.
- Four microphones, two with black/yellow cables and two with black/red wiring.

## Step 7



- The backside of the U-frame. The cable is not soldered, there is a plug.
- Detail of the plug.

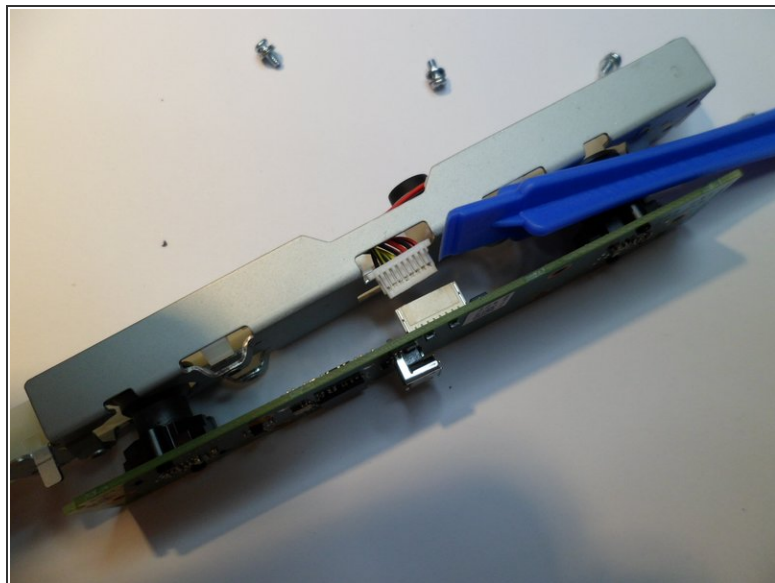
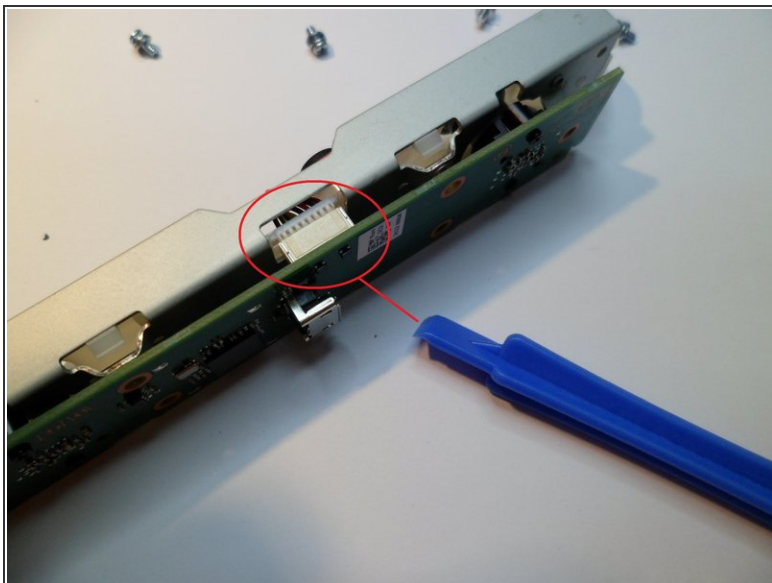
## Step 8



- 6 PH1 screws. Take a small magnet to hold them.

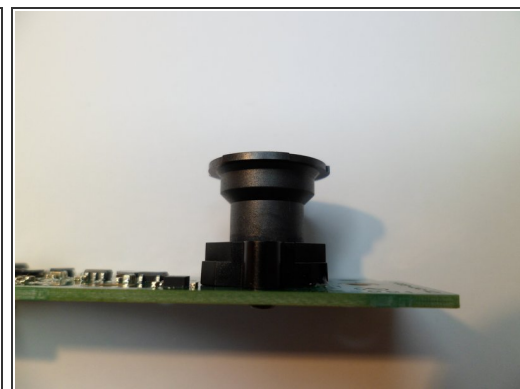
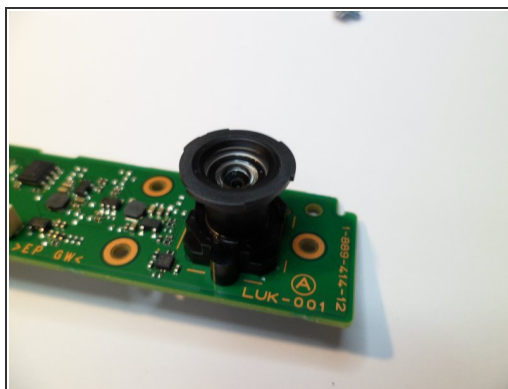
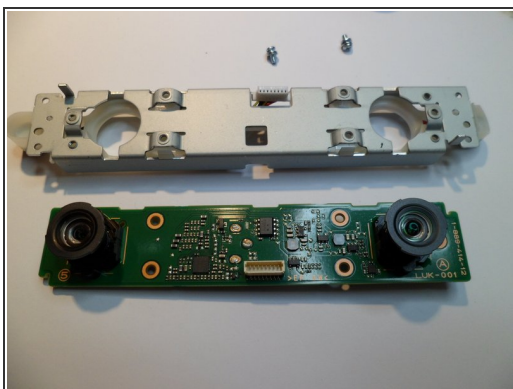


## Step 9



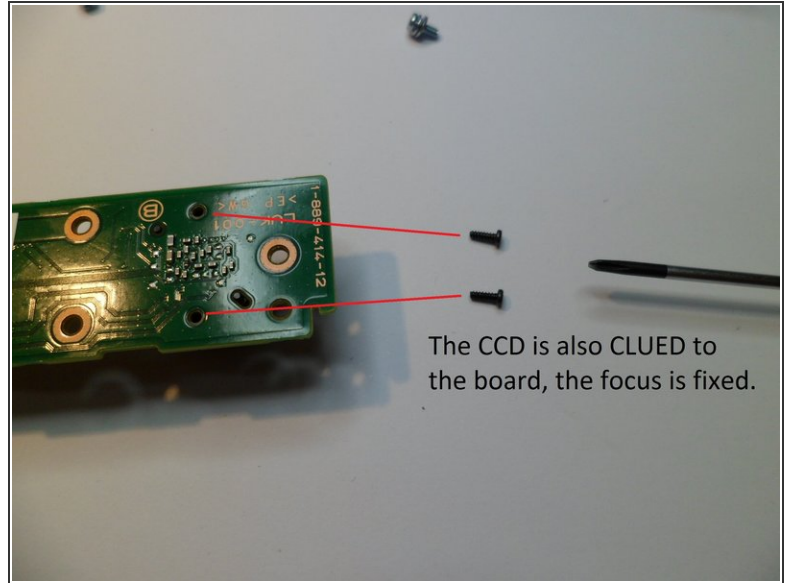
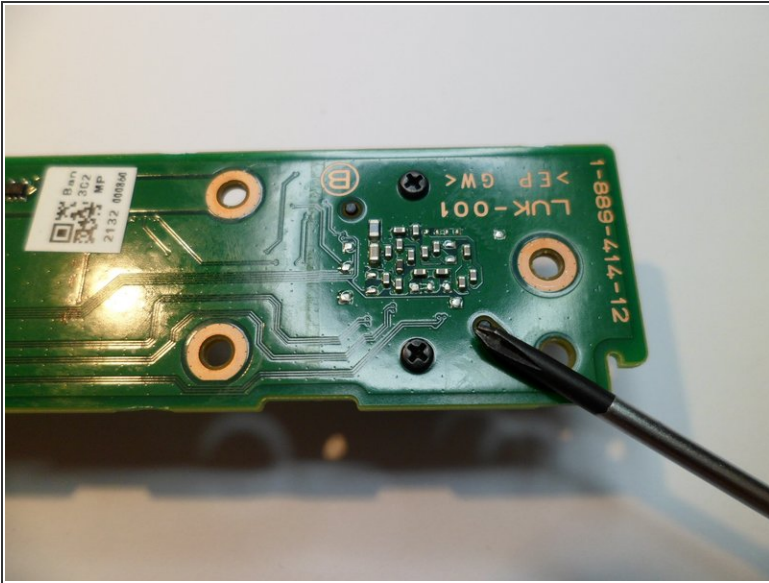
- The connector of the mikrophone-array

## Step 10



- The lenses, plastic, glued tight.
- NOT ADJUSTABLE.

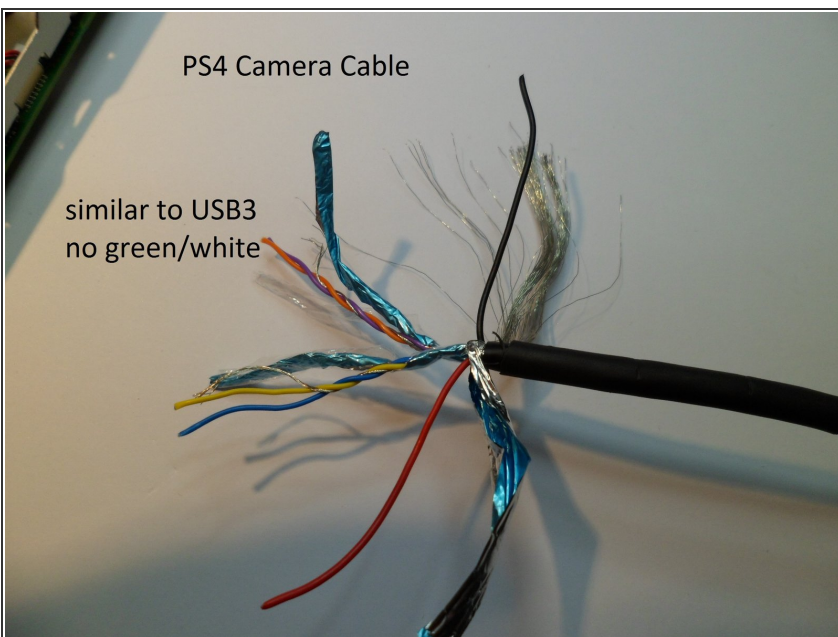
## Step 11



The CCD is also CLUED to the board, the focus is fixed.

- Backside, two small PH0 at each CCD. But the Cameramodules are clued to the board, too - without destruction, you can not open it.
- I want to save it as spare-part, so i don't want to open it. So here is finito capito. :) Thanks for watching...

## Step 12



- Extra: The wiring.
- It's an USB3 cable without green/white Pimf. There are three SEPARATE ISOLATED metalfoil shields with wire, red-black-power and two Pimf yellow/blue and orange/green. So ja, thats it. Paulaner.



To reassemble your device, follow these instructions in reverse order.