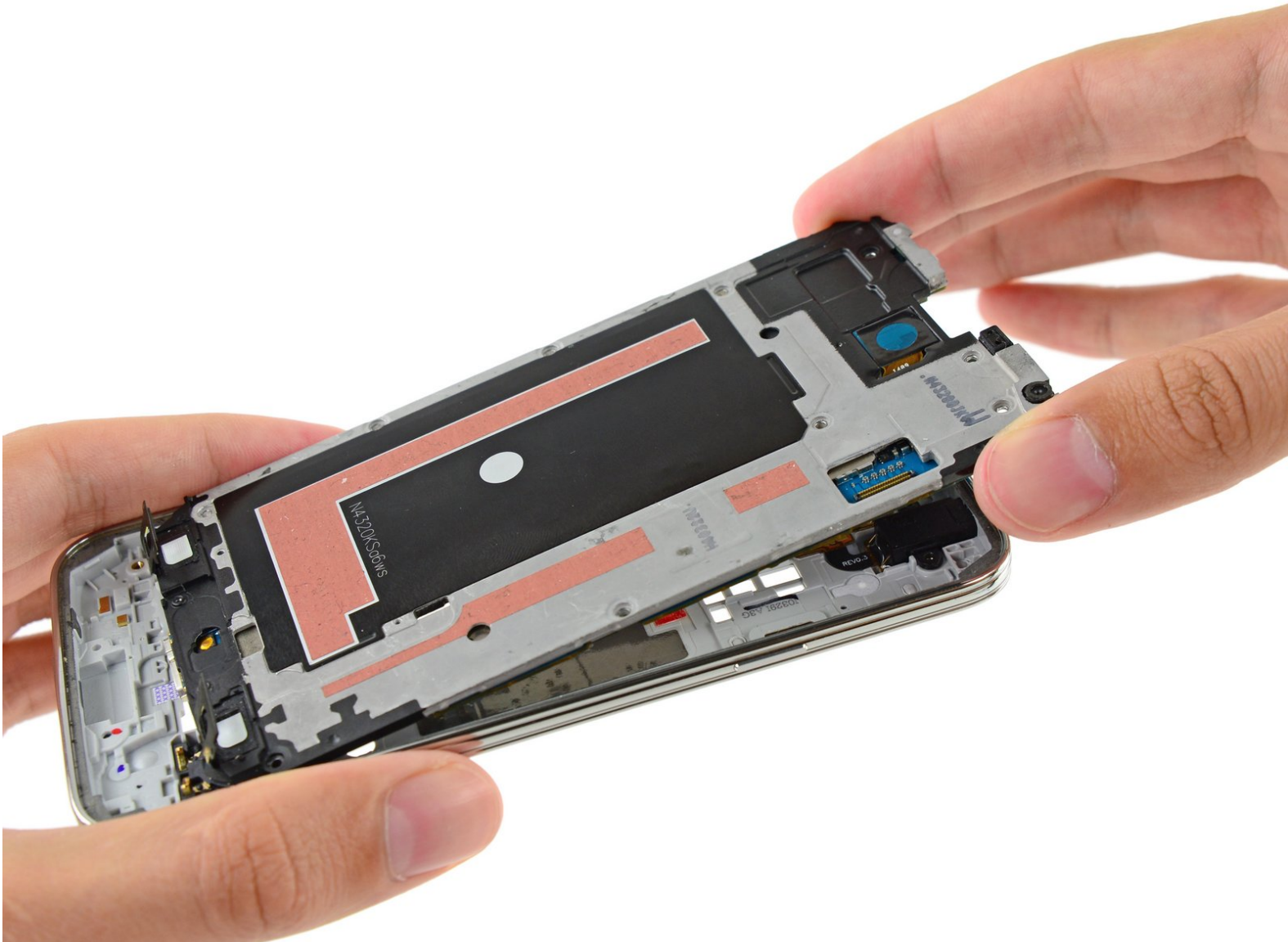




# Samsung Galaxy S5 Interior Midframe Assembly Replacement

Prereq to remove the interior midframe and motherboard assembly.

Written By: Sam Goldheart



---

# INTRODUCTION

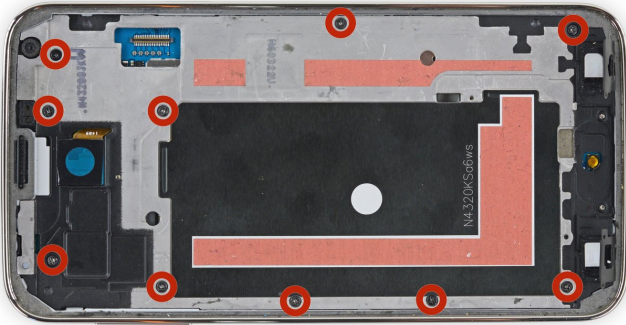
Prereq to remove the interior midframe and motherboard assembly.



## TOOLS:

- [Phillips #000 Screwdriver](#) (1)
  - [iFixit Opening Tools](#) (1)
-

## Step 1 — Interior Midframe Assembly



- Remove the ten 3.4 mm Phillips #000 screws from the display side of the midframe.

## Step 2



- ❗ Flip the phone over and remove the following screws from the battery side of the midframe:
  - Two 4.4 mm Phillips #000 screws near the USB port on the battery side of the phone
  - One 4.4 mm Phillips #000 screw


### Step 3




- Gently run a plastic opening tool down along the left inner side of the interior frame to separate the three white plastic clips.

### Step 4



 The midframe is composed of two halves that encase the motherboard.

- Gently pull the long sides of the silver bezel out away from the phone to separate the two halves of the midframe.

 It may be helpful to gently push in from the inside of the battery compartment, but be careful not to flex the interior half of the midframe, as the motherboard is mounted to it.

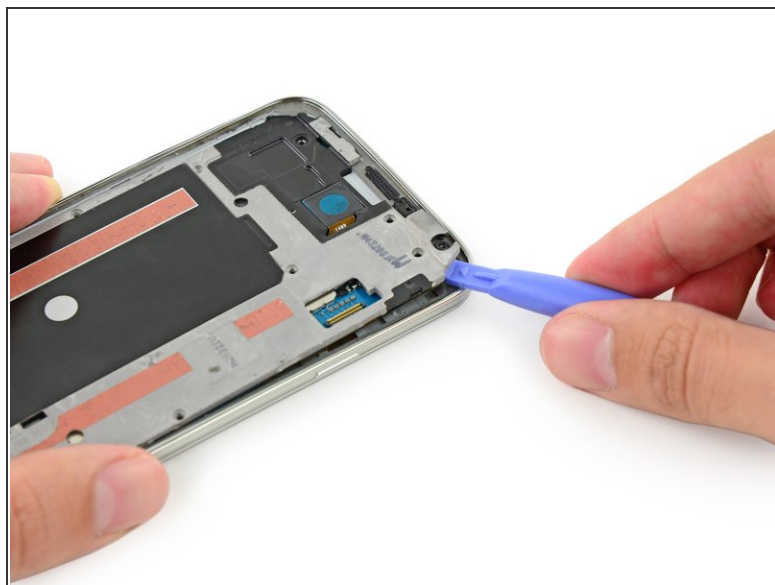
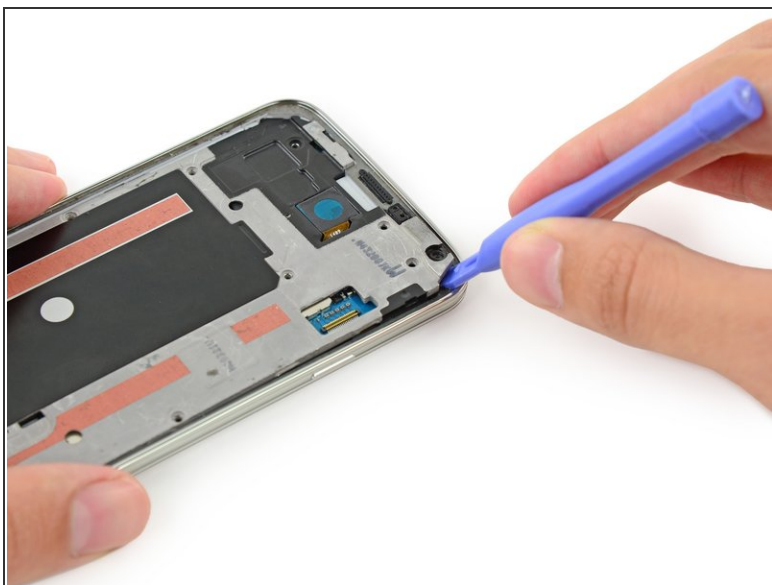


## Step 5



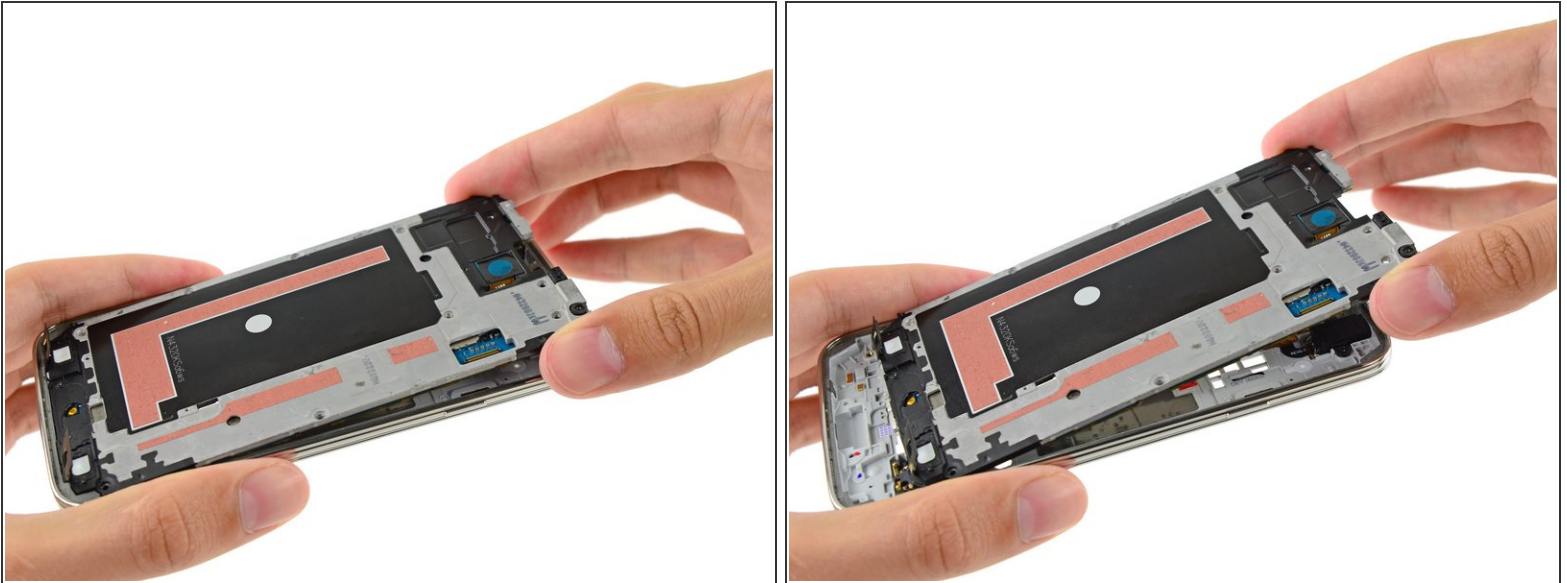
- Continue on to the right side of the silver bezel, pulling away from the interior section of the midframe to separate the two halves.

## Step 6



- Use a plastic opening tool to pry any remaining corners out of the silver bezel.

## Step 7



- Carefully remove the interior midframe/motherboard assembly from the white inner midframe.

To reassemble your device, follow these instructions in reverse order.