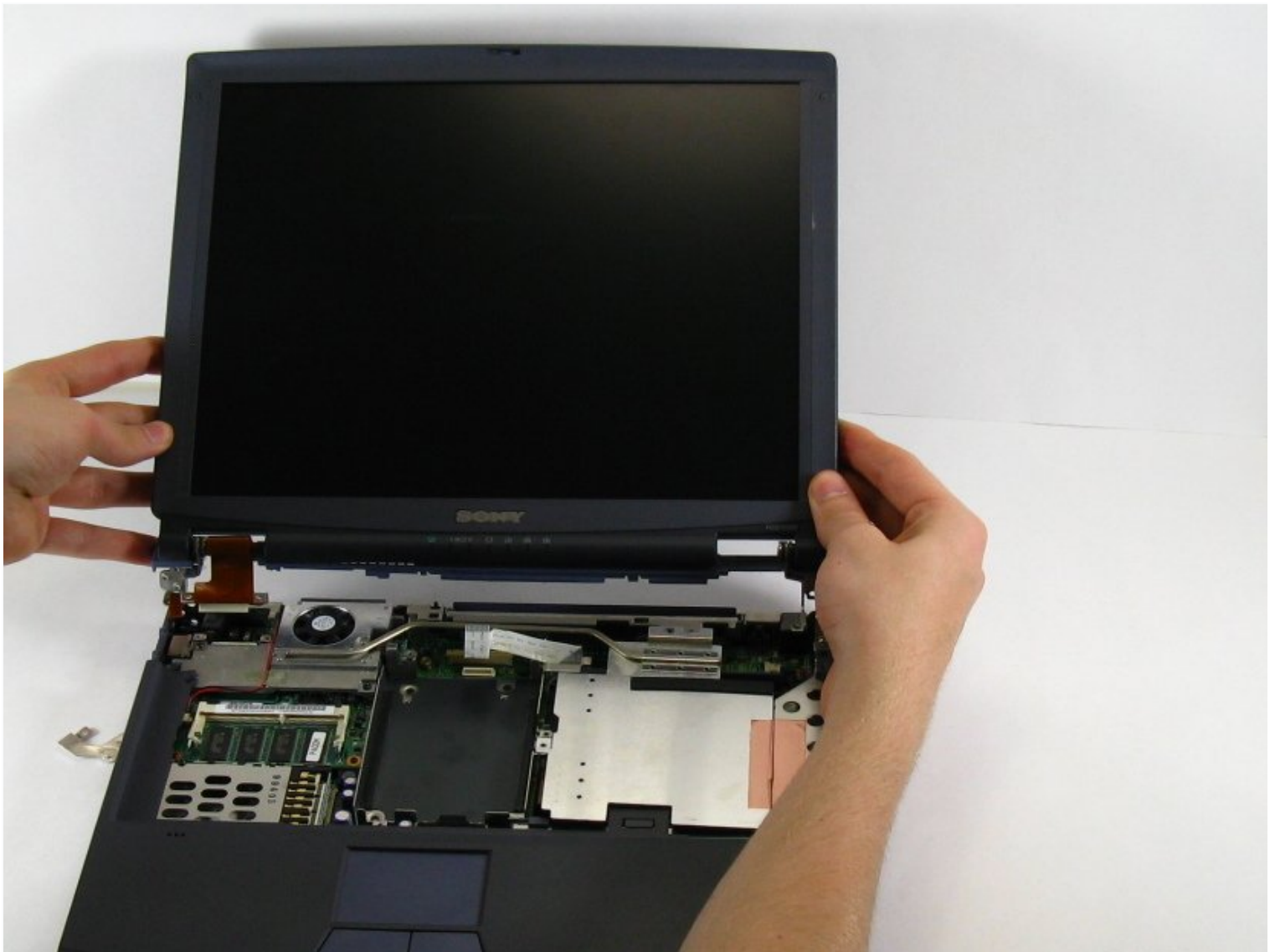




Sony Vaio PCG-F360 Display Replacement

The 14.1" VGA display can be removed as a whole...

Written By: ahintz



INTRODUCTION

The 14.1" VGA display can be removed as a whole and replaced.

TOOLS:

Phillips #00 Screwdriver (1)

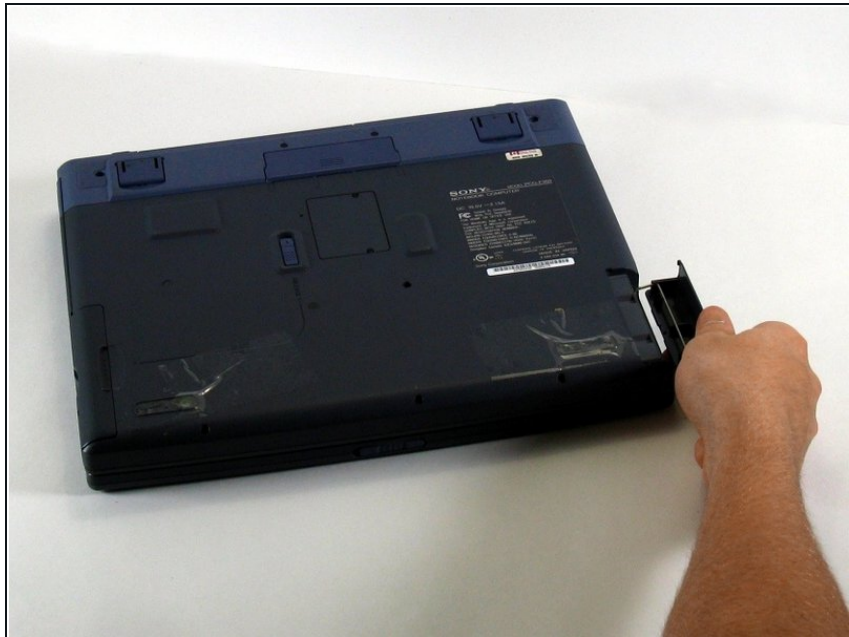
Spudger (1)

Step 1 — Battery



- Position the laptop screen-side down as shown.
- In this position the battery housing will be located on the right hand side.

Step 2



- Lift the panel up and then out to gain access to the battery.

Step 3



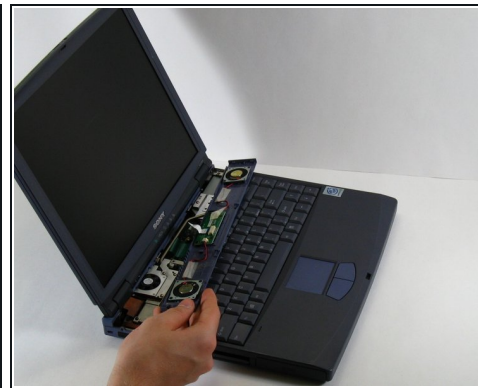
- Use the indentations to pull the old battery out.

Step 4



- The battery is now removed and it is safe to move on to uninstalling other components.

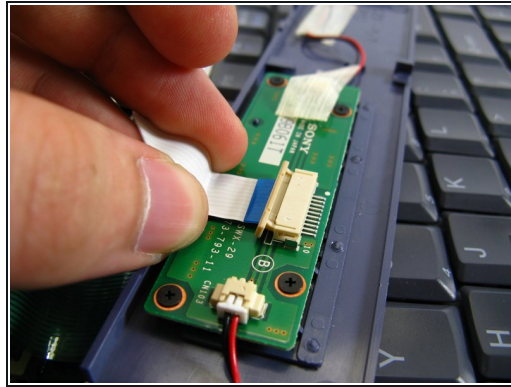
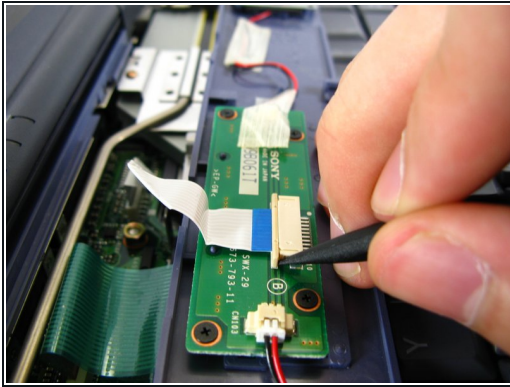
Step 5 — Keyboard



- There are two screws on the left hand side of the laptop near the IR (Infared remote) receiver (see image). Remove them using a Phillips #00 Screwdriver.
- Slide the speaker panel towards the left, then carefully flip it over onto the keyboard.

⚠ Make sure not to pull the speaker panel away from the computer just yet - it is still connected!

Step 6



- On the inside of the speaker panel, using a spudger, push the beige tab in the direction of the ribbon. It should only move a small amount.
- Remove the ribbon by gently pulling on it, there should be little or no resistance.
- Now the speaker panel can be set aside.

Step 7



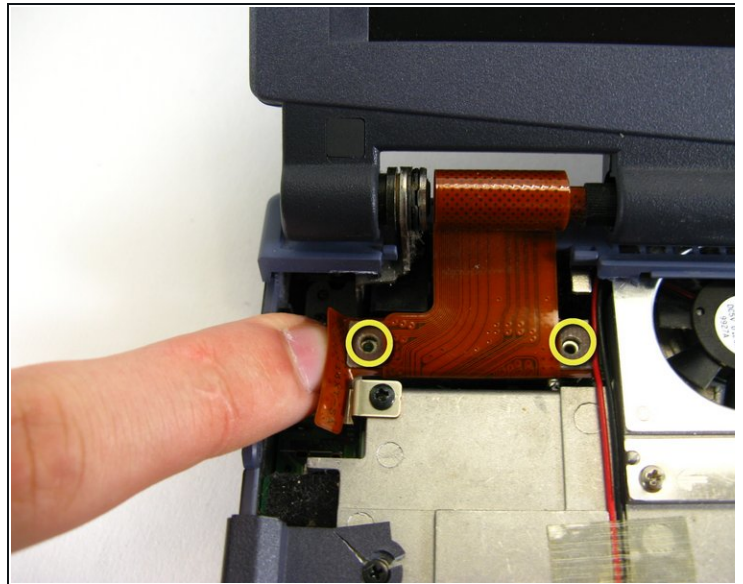
- Remove the metal screw that will be located at the red circle.
- Pull on the green strip, and the keyboard should come free easily.

Step 8 — Display



- Remove the six screws along the hinges (three on either side).
- Twist and pry at the hinge covers with a spudger until they pop up and remove them.

Step 9

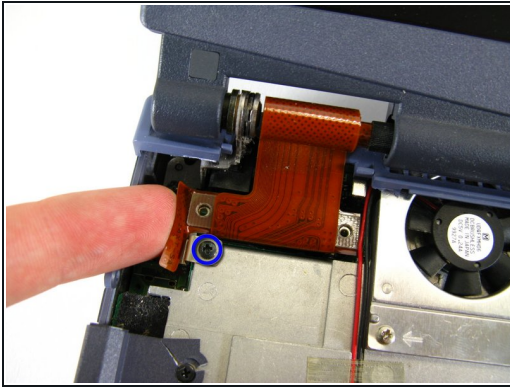


- With the computer facing you open its lid carefully, so that the computer looks like this.

⚠ Because you are removing screws from the hinge, be especially careful to not damage the hinge or the screen when opening the laptop. Be slow about opening it and make sure that the display doesn't fall out.

- Remove the two screws holding the ribbon cable in place (pictured here without screws).

Step 10



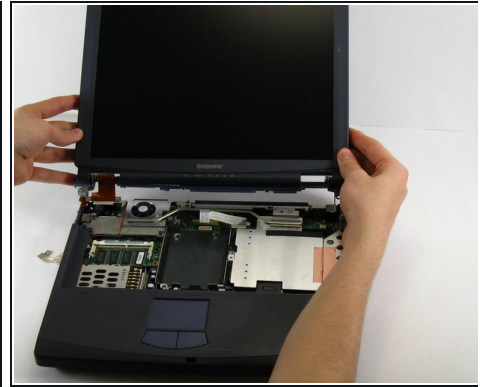
- Remove the black screw with your Phillips screwdriver.
- Remove the screw in the upper right corner while holding the bottom right side of the computer display.
- Carefully pry the ribbon from its connector and lift it up.

Step 11



- Remove the screw in the upper left corner that connects the display frame to the laptop.

Step 12



- Tilt the display backwards. Grip the display from its base to reduce torque.
- Use a spudger to pry the upper part of the back panel by pushing in the tabs located along its length.
- ⓘ This step is particularly tricky during reassembly, as the plastic must be perfectly aligned or it will not snap in. If it does not snap in correctly, the screen won't fit properly.
- Carefully lift the display free of the case.

To reassemble your device, follow these instructions in reverse order.