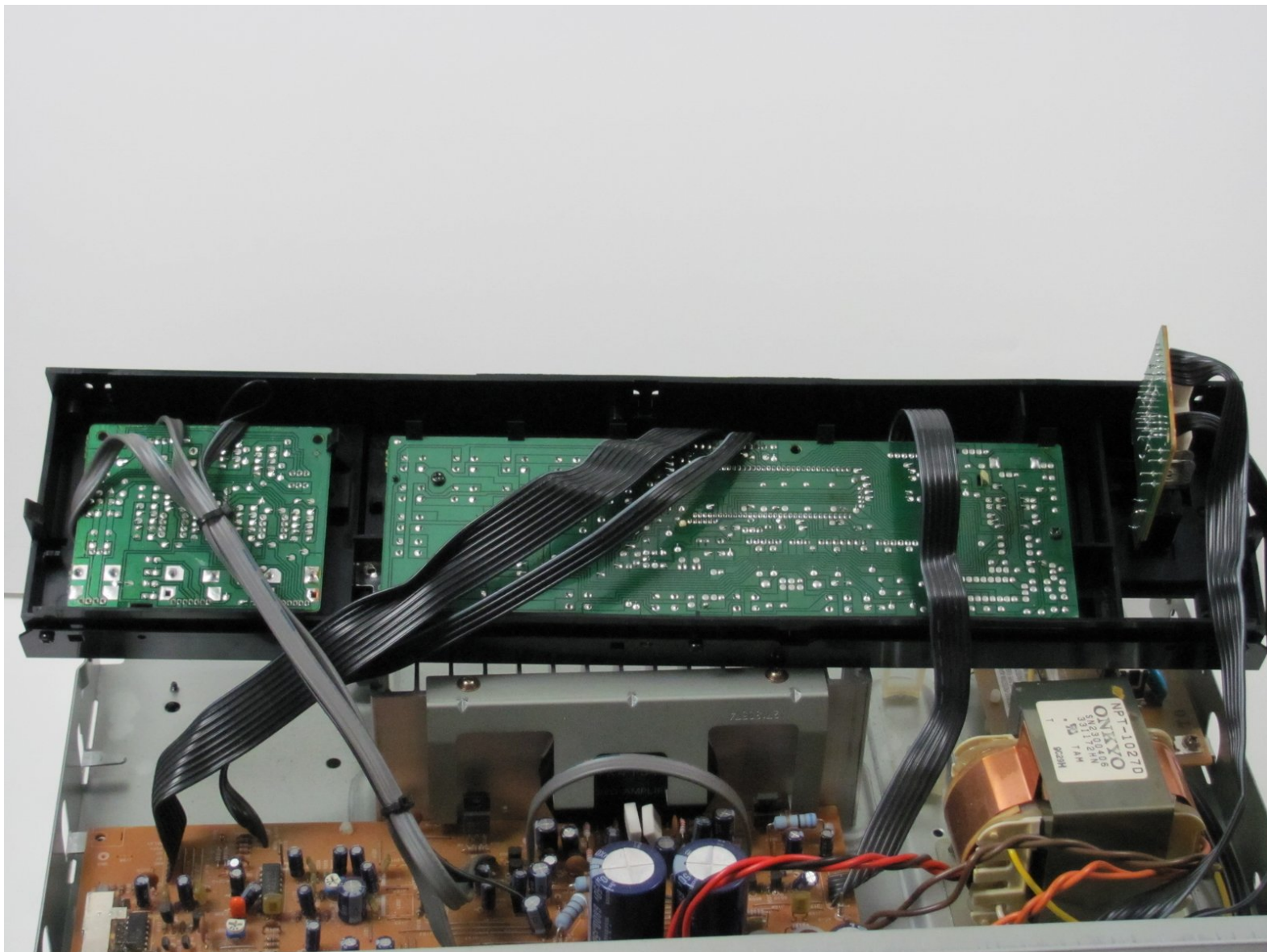




# Disassembling Onkyo TX-800 Face plate

Written By: Ryan



---

## INTRODUCTION

Use this guide to separate the face plate from the amplifier.



### TOOLS:

- [Phillips #1 Screwdriver](#) (1)
  - [Large Needle Nose Pliers](#) (1)
-

## Step 1 — Disassembling Onkyo TX-800 Top case



- Remove the two screws on both sides of the receiver. Keep these and the rest of the screws in a safe place.

## Step 2



- Remove the top screw on the back panel.

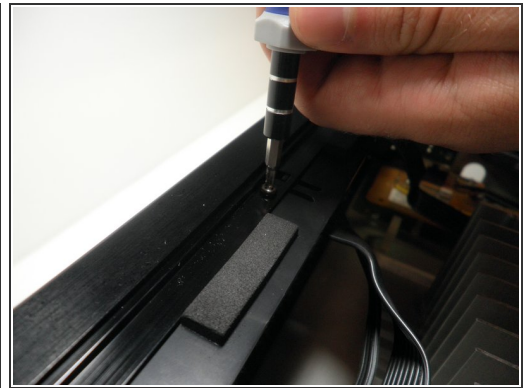
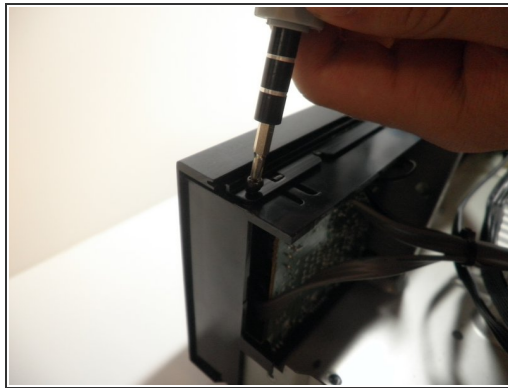
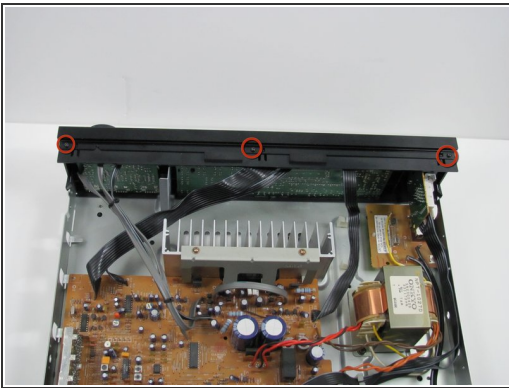


### Step 3



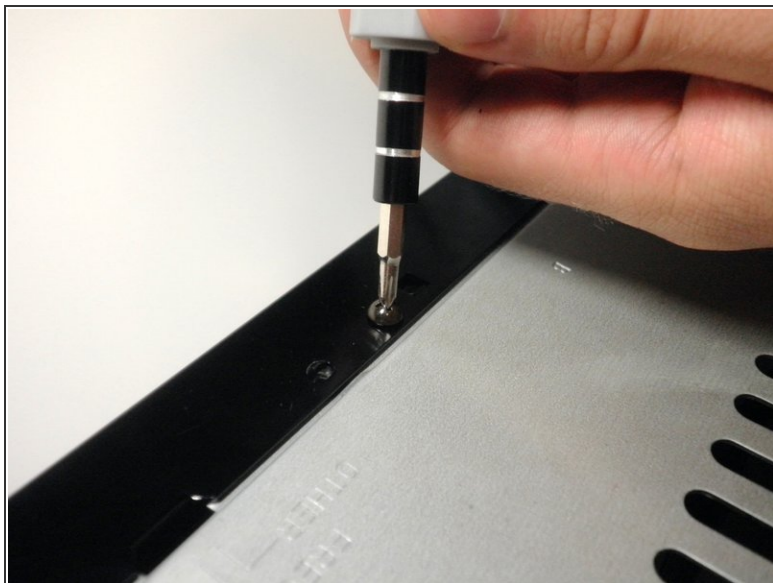
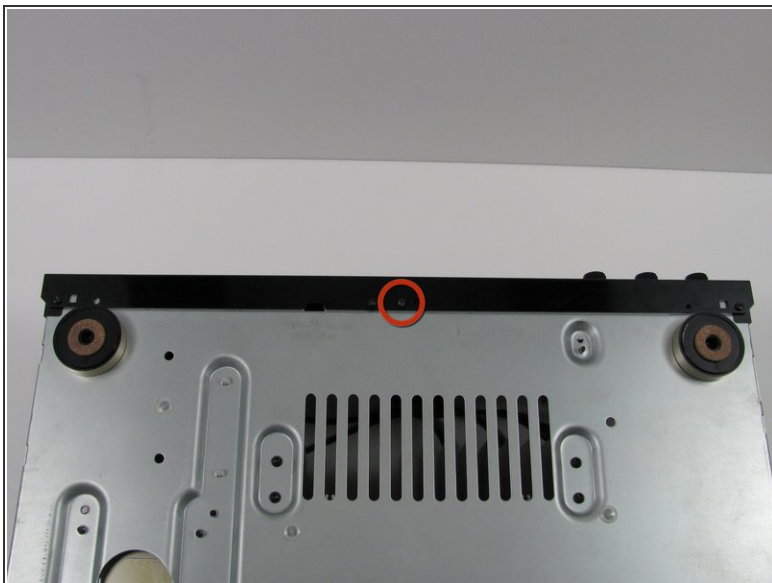
- Slide off the case to expose the internal components of the receiver.

### Step 4 — Face plate



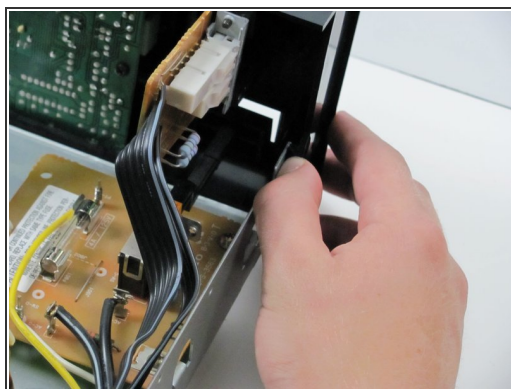
- Unscrew the three screws on top of the face plate.

## Step 5



- Unscrew the one screw on the bottom of the front panel.

## Step 6



- Simultaneously push down on the head of the snap on each end of the device with your thumbs and push to separate the face plate. This may take some force.

To reassemble your device, follow these instructions in reverse order.