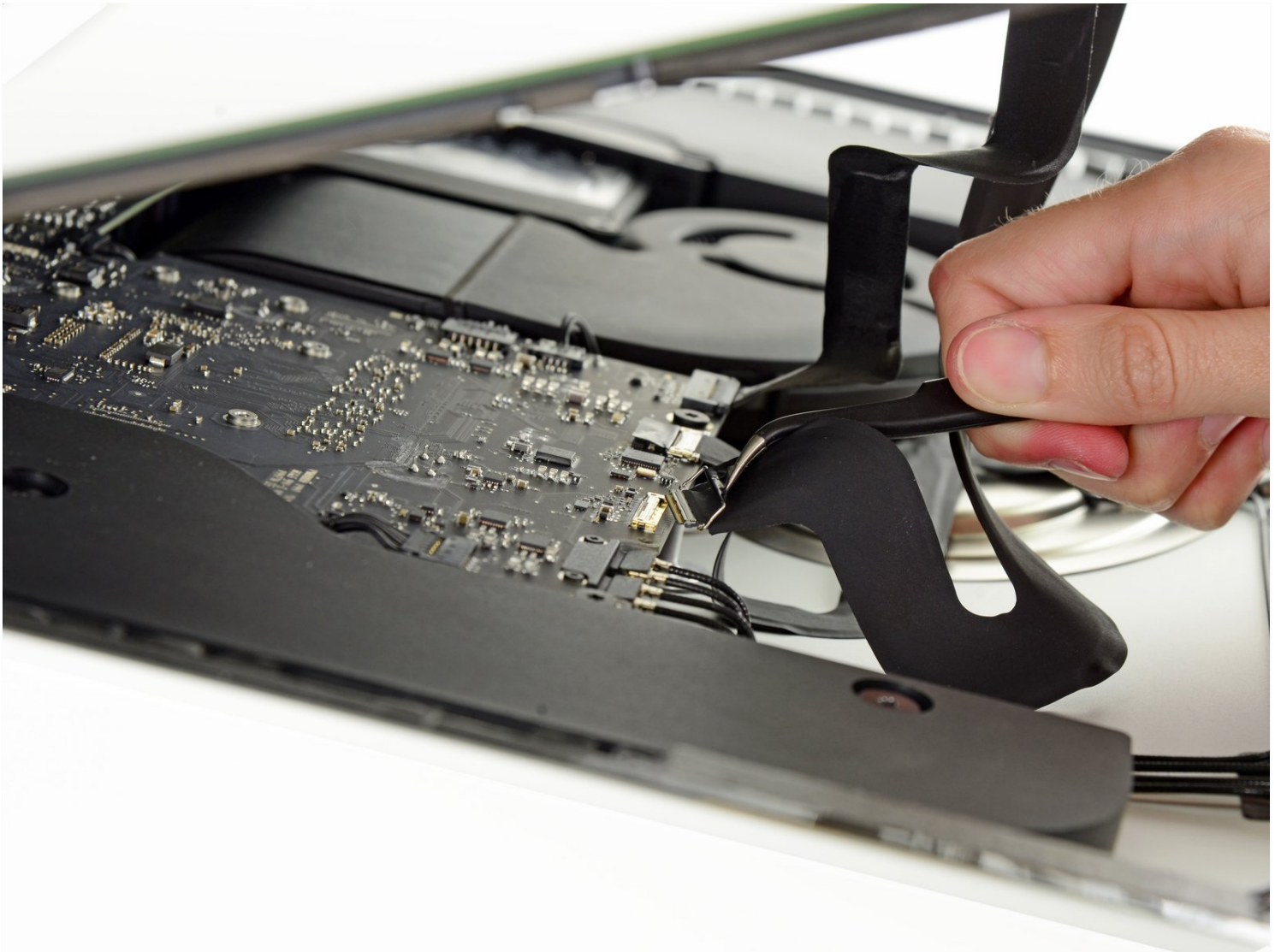




iMac Intel 21.5" EMC 2805 Display Assembly Cables Replacement

Prereq to remove the display.

Written By: Walter Galan



INTRODUCTION

Prereq to remove the display.

TOOLS:

[Tweezers](#) (1)

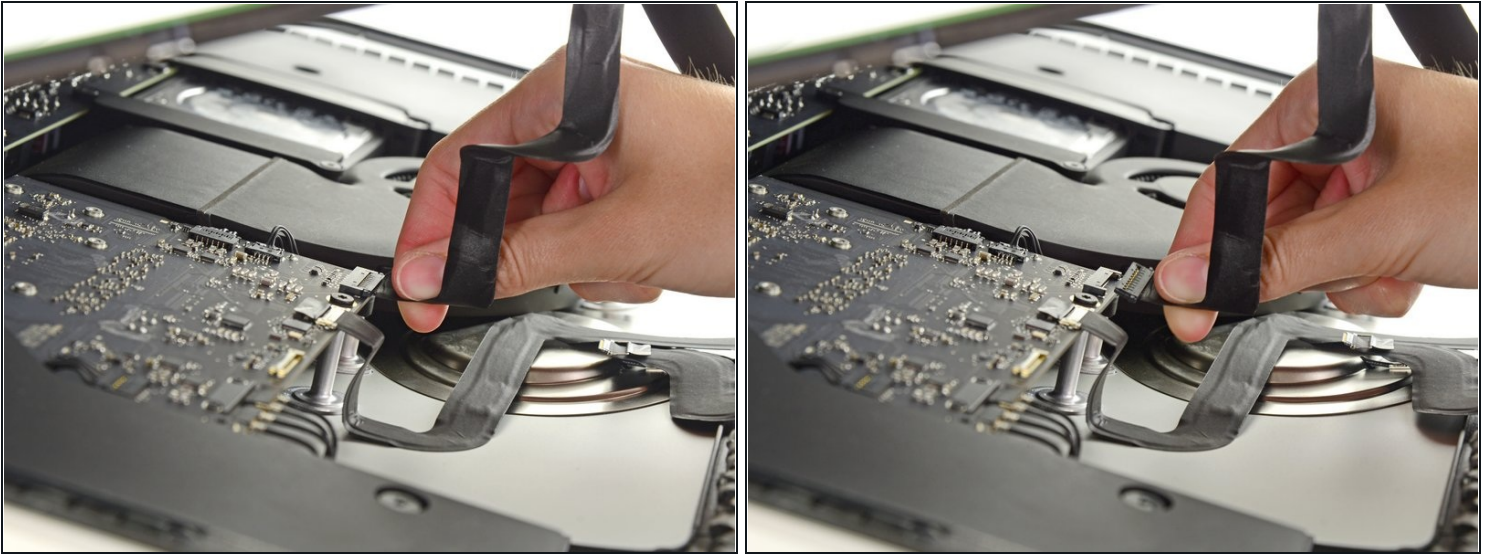
Step 1 — Display Assembly Cables



- Use a pair of [tweezers](#) to flip up the metal retaining bracket on the display data cable.
- Carefully pull the display data cable from its socket on the logic board.

 Be sure to pull the display data cable connector straight out of its socket.

Step 2



- While holding the display up with one hand, use the other hand to unplug the display power cable.
 - ① Lift the display up enough to have easy access to the connector, but not so much that you stretch the cables and stress their connections (about 8").
-

To reassemble your device, follow these instructions in reverse order.