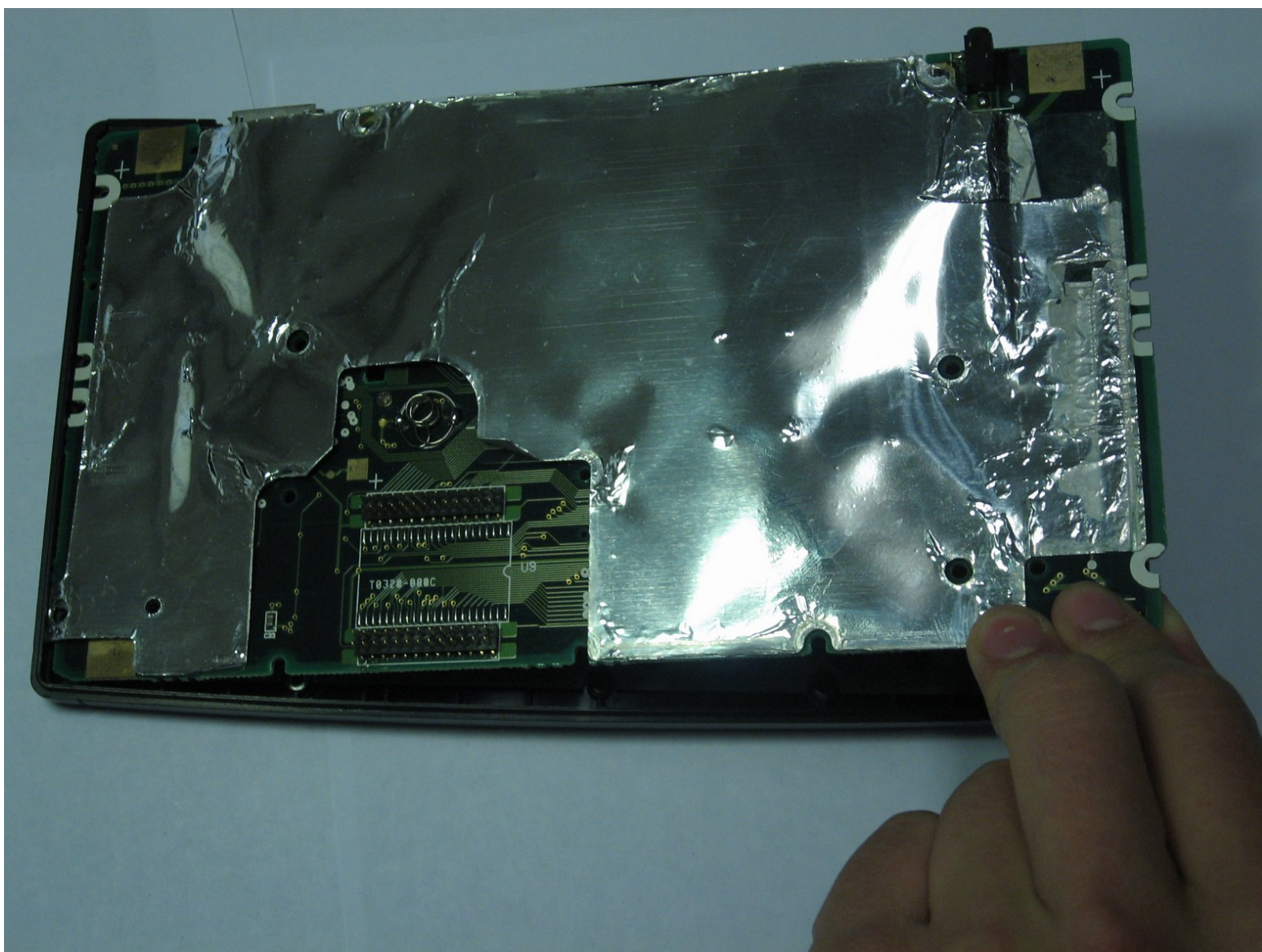




# Texas Instruments TI-92 Motherboard Replacement

Written By: Daniel Maldonado



---

## INTRODUCTION

In this guide we will show how to access the motherboard and how to separate it from other internal components.

***Need to place picture***



### TOOLS:

- [Phillips #00 Screwdriver](#) (1)
  - [iFixit Opening Tools](#) (1)
-

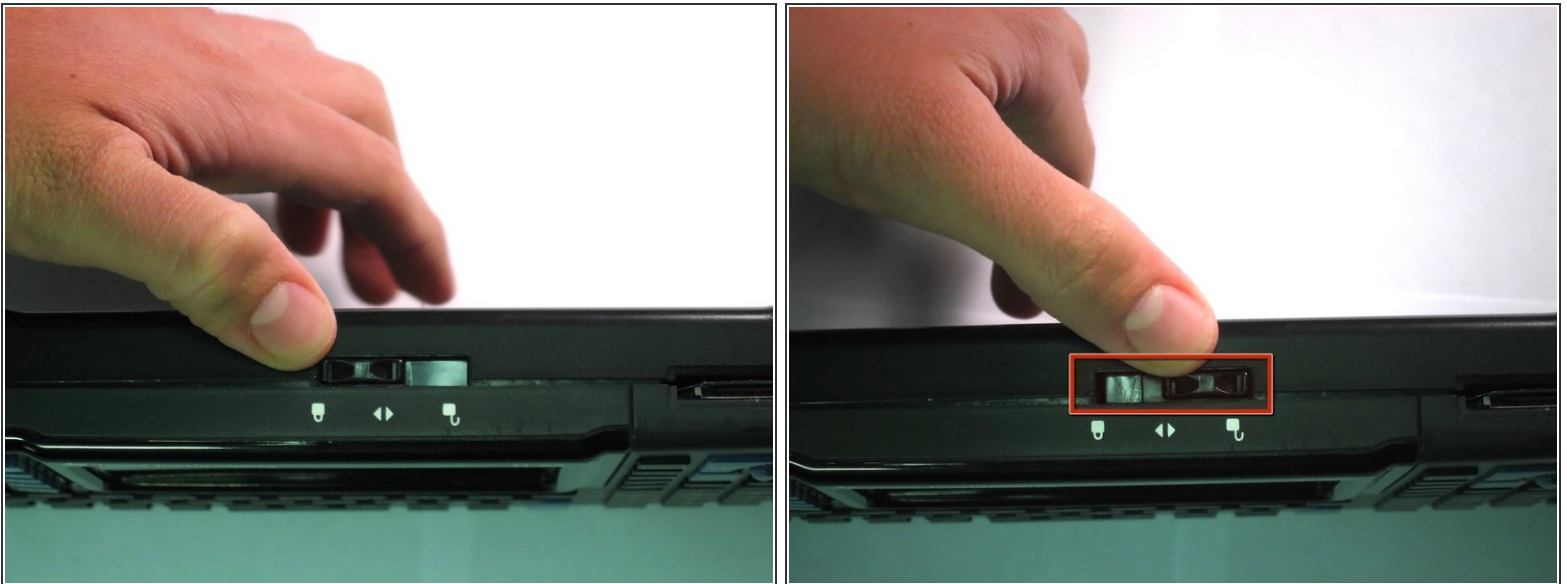
## Step 1 — Back Cover



**i** The first step to any repair operation is to remove the front cover.

- Grab the back of the calculator with one hand and the cover with the other.
- Pull the cover off from one of the sides for easy removal.

## Step 2



- Orientate the calculator with the top facing towards you.
- Slide the locking tab, found on the top part of the calculator, to the unlock position.

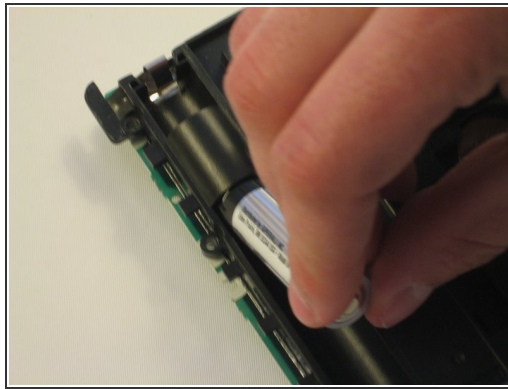


## Step 3



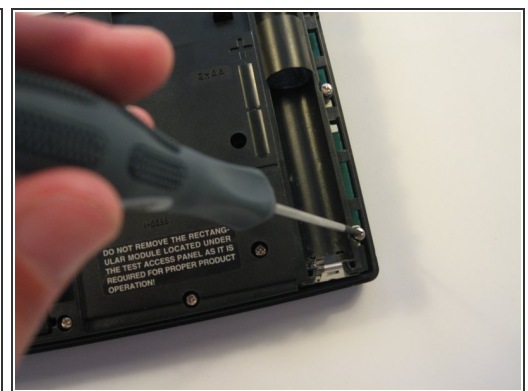
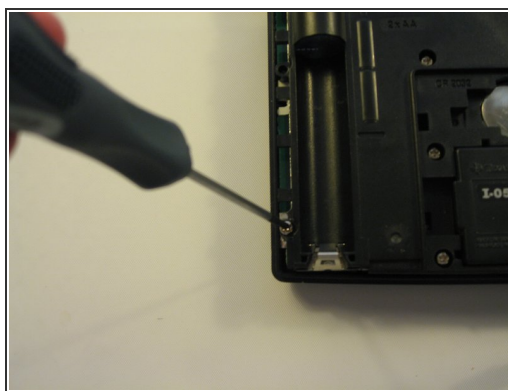
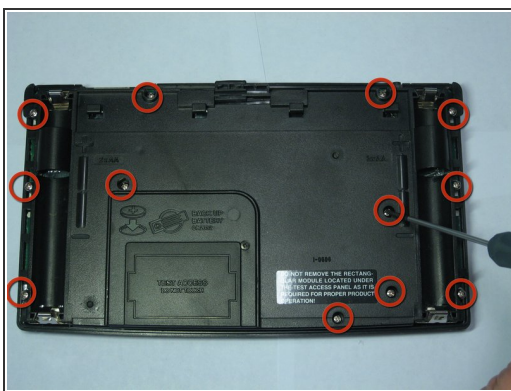
- "Locking Tab"
- To remove the back cover, slide the cover away from the locking tab towards the bottom of the calculator until the cover no longer slides.
- Then with the front of the calculator facing down, pull up on the back cover.
- The calculator should now be orientated with the front facing down, as shown in picture 2.

## Step 4 — Batteries



- i The Batteries are now exposed and the calculator is face down with the back towards you.
  - Remove the bottom batteries by pressing the battery towards you while pulling it out from the far end.
- i If you can not do the previous step with your finger try using a flat ended tool such as an Ipod opening tool.
  - After the bottom battery has been removed push or slide the other( *top*) battery towards you until it is fully exposed in the battery slot.
  - Now simply remove the battery.

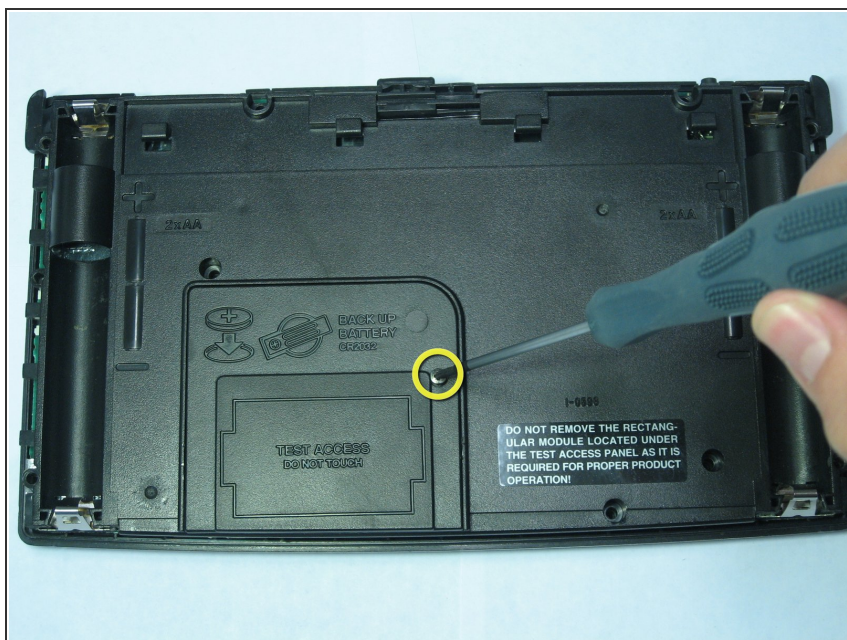
## Step 5 — Texas Instruments TI-92 Back Case Disassembly



- Using a Philips Screwdriver #00 unscrew the twelve 11.8mm screws shown in the picture and located on the back of the calculator.

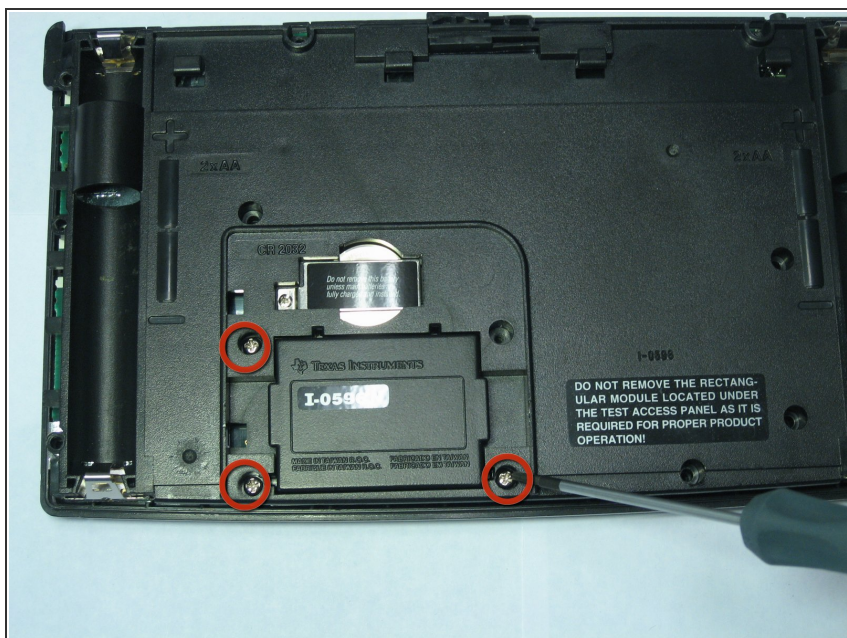


## Step 6



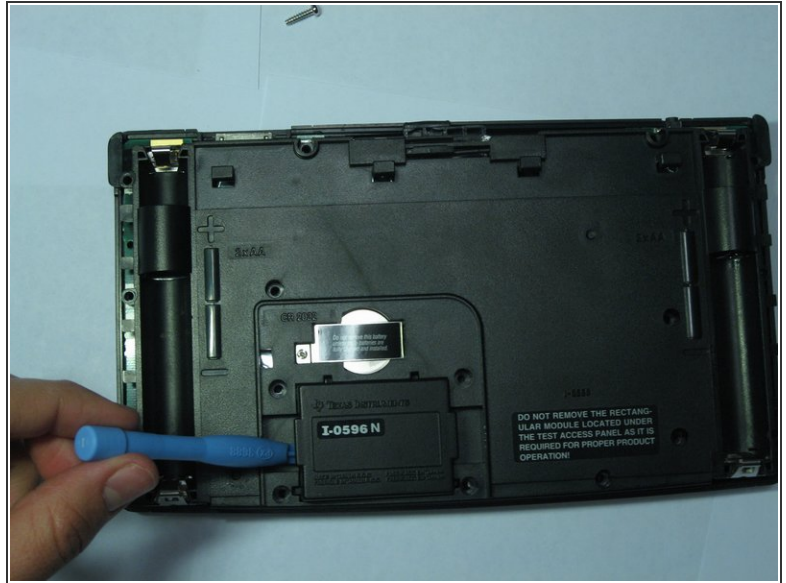
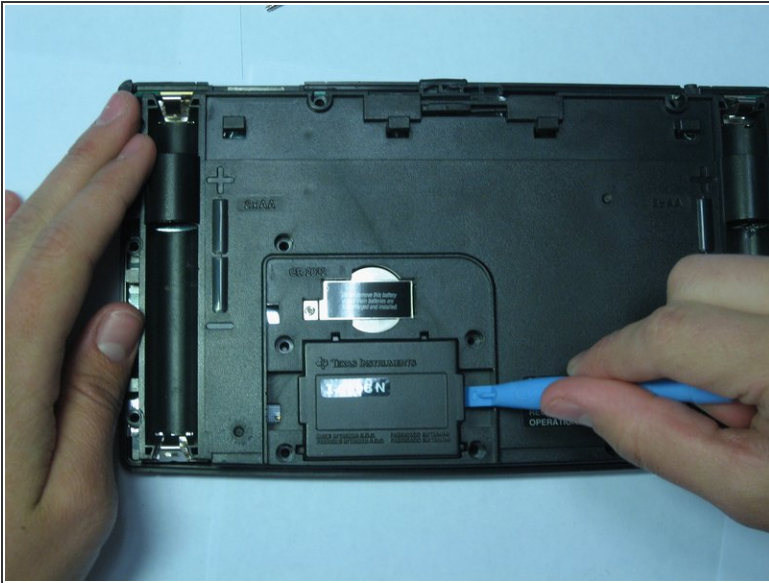
- Unscrew the 19mm screw located near center of the back of the calculator.
- Remove the panel being held by the screw.

## Step 7



- Using the same Phillips screwdriver, unscrew the remaining three 11.8mm screws.

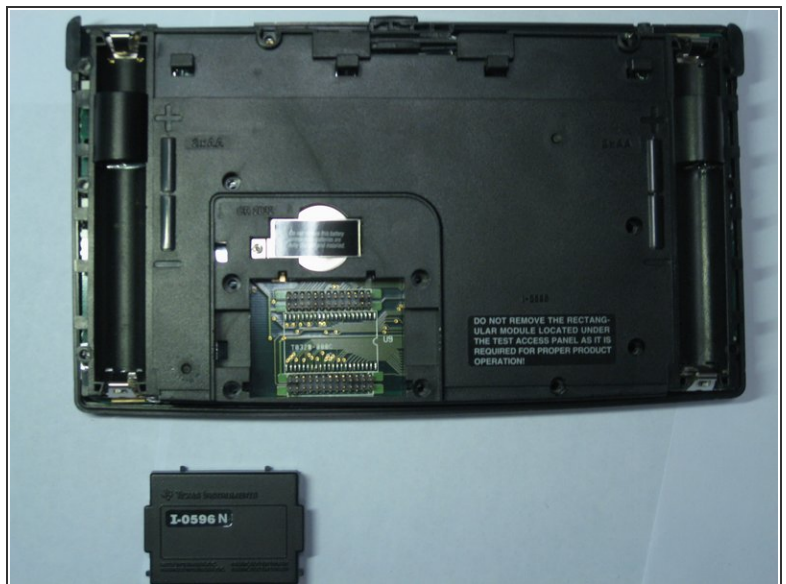
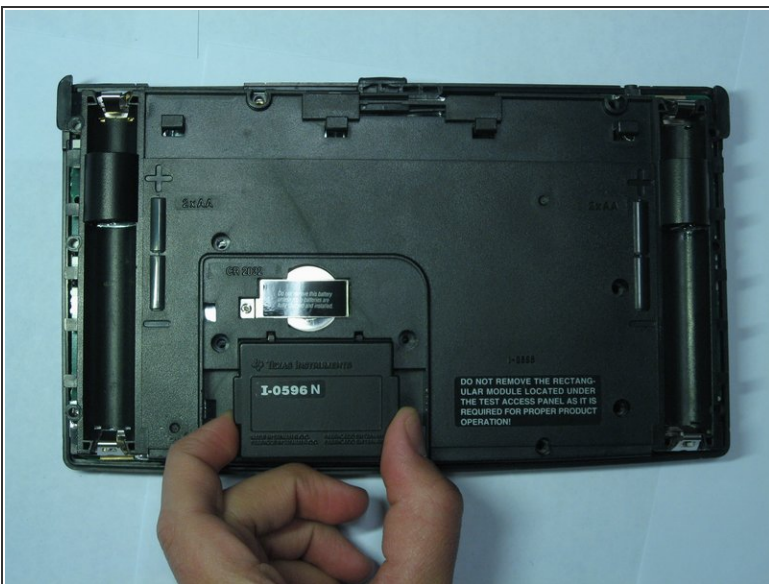
## Step 8



- Using the Ipod Opening Tool pull up on both sides of the rectangular module while keeping the rest of the calculator flat on a surface face down

⚠ You may get a lot of resistance from the module. Do not use too much force as you risk damage. Use small amounts of force to work the module out.

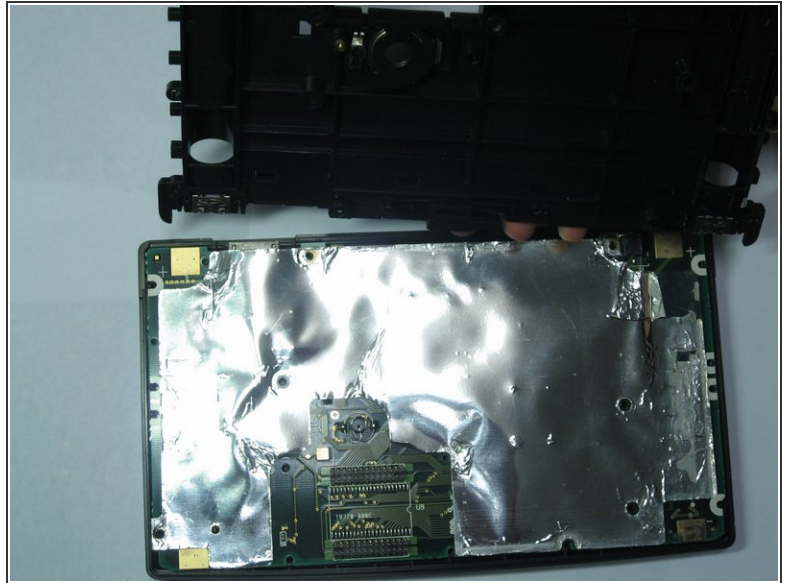
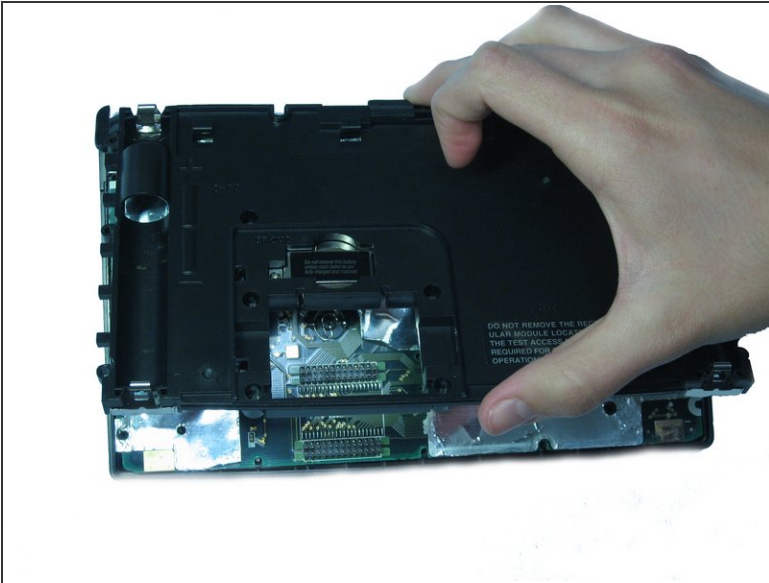
## Step 9



- Pull out the rectangular module when it is finally loose enough.



## Step 10

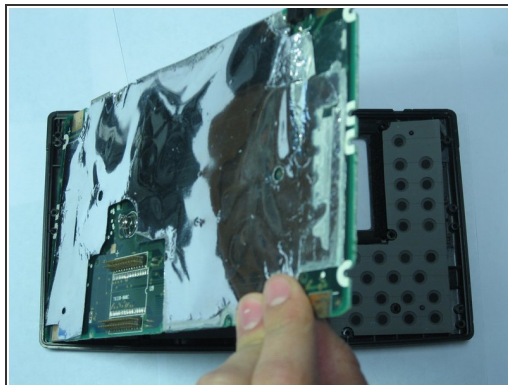
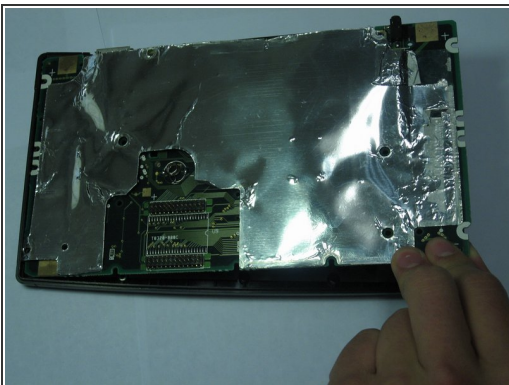


- Now pull up on the back cover of the calculator while holding the rest of it flat on a surface.



Be careful not to tilt the front of the calculator at this point. The keyboard buttons are now unsupported and will fall out of place.

## Step 11 — Motherboard



- Pull the motherboard up while holding the rest of the calculator firmly in place
- The motherboard has now separated from the rest of the calculator

To reassemble your device, follow these instructions in reverse order.