



Disassembling GravityLight Back Panel

Prerequisite Only

Written By: Brian Gouldsberry





TOOLS:

- [Phillips #00 Screwdriver](#) (1)
-

Step 1 — Removing the Front Panel



- Flip the GravityLight on its back and place it on a sturdy surface.
- Unscrew the three 2cm Phillips #00 screws on the back of the GravityLight's body.

Step 2 — Opening the Device Housing



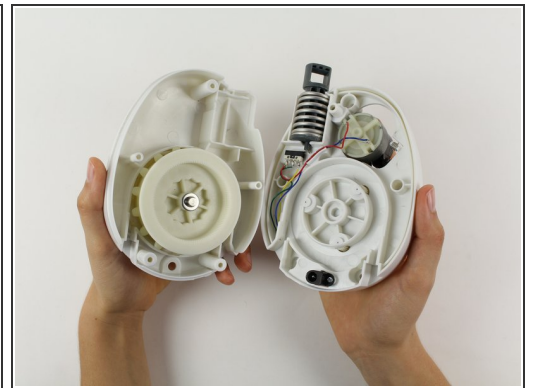
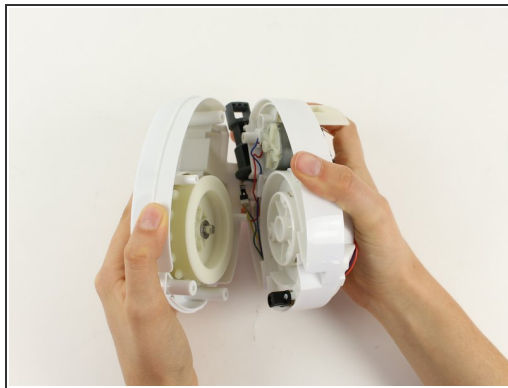
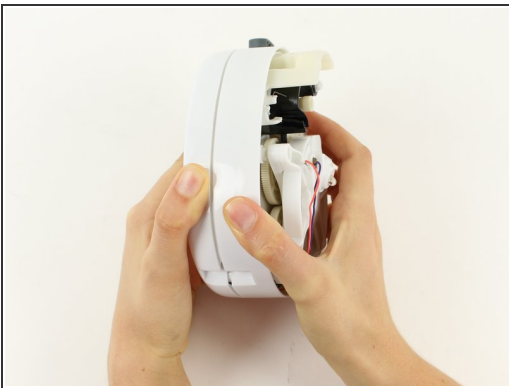
- ⚠ Some of the internal pieces may loosen or fall out during disassembly.
- Firmly grasp both parts of the GravityLight body and pull them apart.


Step 3 — Removing the Back Panel Screws



- Place the back panel, the larger of the two pieces, on a sturdy surface with its back down.
- Unscrew the two 2cm Phillips 00 screws on the inside of the back panel.

Step 4 — Separating the Back Panel Housing



 Some of the internal pieces may loosen or fall out during disassembly.

- Firmly grasp both parts of the back panel and pull them apart.

To reassemble your device, follow these instructions in reverse order.