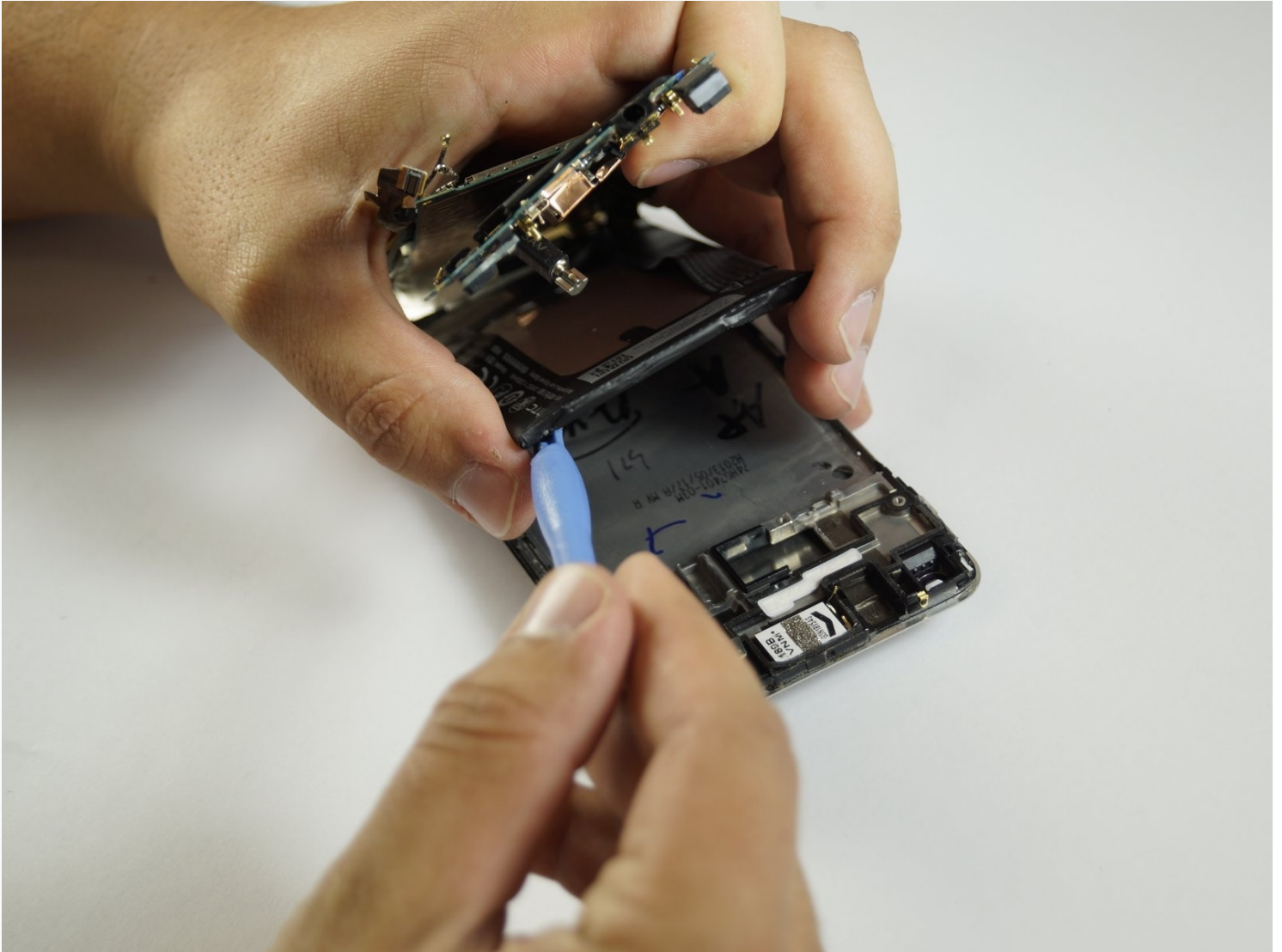




# HTC One Battery Replacement

If you have an issue with your battery as...

Written By: AJ Skiles



# INTRODUCTION

If you have an issue with your battery as described in the troubleshooting guide, this guide will instruct you on replacing your battery.

[video: <https://youtu.be/k44Y2zpbhOo>]

## TOOLS:

[iFixit Opening Tool](#) (2)

**thin**

*You will need multiple to pry.*

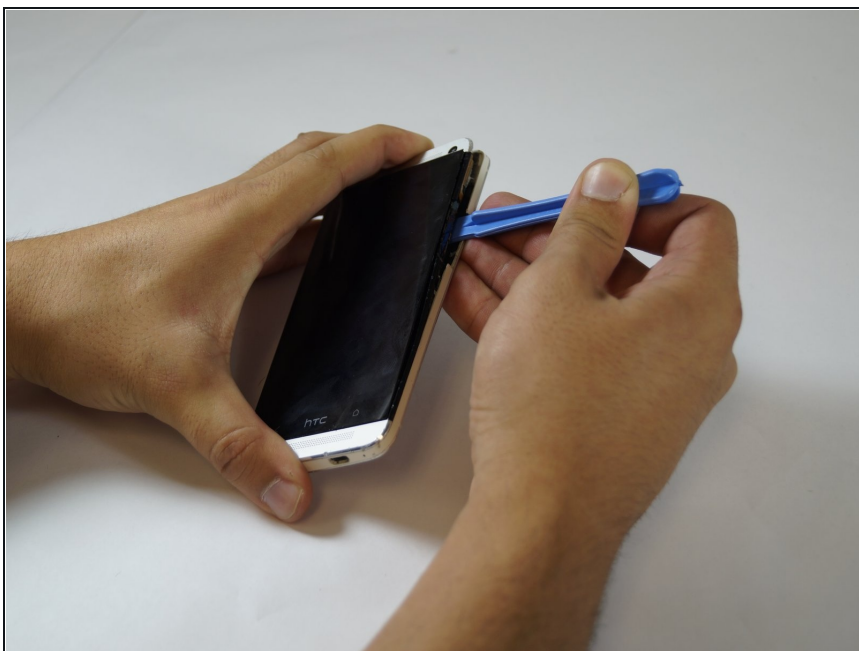
[Tweezers](#) (1)

[Phillips #000 Screwdriver](#) (1)

## PARTS:

[HTC One \(M7\) Battery](#) (1)

## Step 1 — Battery



- In this step you'll lift the screen. Be VERY gentle else you will break it. Insert the plastic opening tool in between the black plastic bezel and the glass screen edge along the sides and the top, gently loosening the adhesive. The screen will remain attached at the bottom edge, as if on a hinge.
- ⓘ You may need to use a hair dryer or hot air gun to loosen the adhesive holding the device together. Be careful not to heat the device too much however as you could cause damage!

## Step 2



- Wedge the plastic opening tool into the crack around the screen on the top, left and right sides.

## Step 3



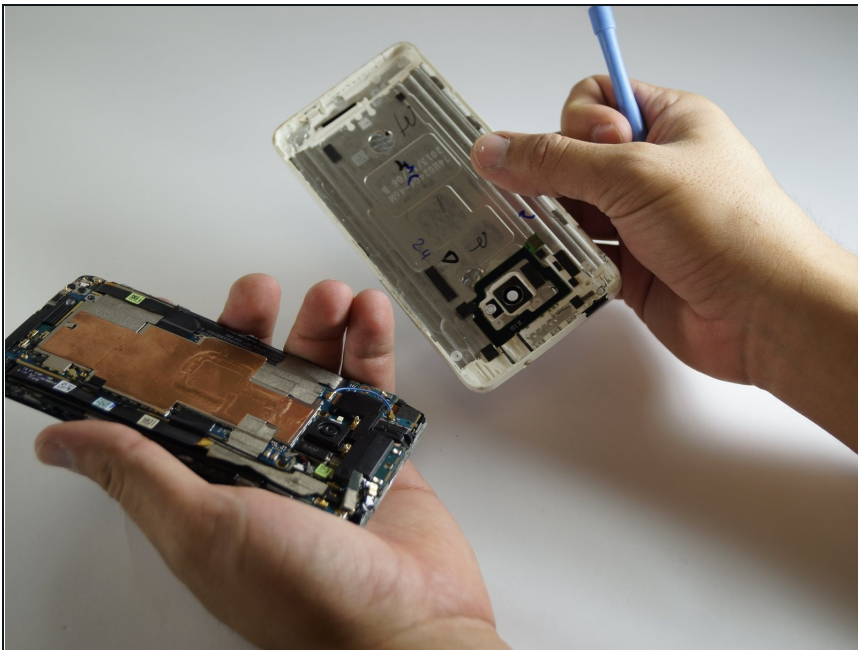
- Once the screen has been loosened on the top, left and right edges, lift the screen.
- ☑ The screen will stay on a hinge until the final step.

## Step 4



- The rear case is held on by glue and eight tabs on the screen bezel. On the volume side there is one above the rocker and three below; on the SIM side all are below the slot. Insert the plastic opening tool between the case edge and the screen bezel, aiming to prise the rear case edge outwards to loosen the glue and free the tabs, one at a time.

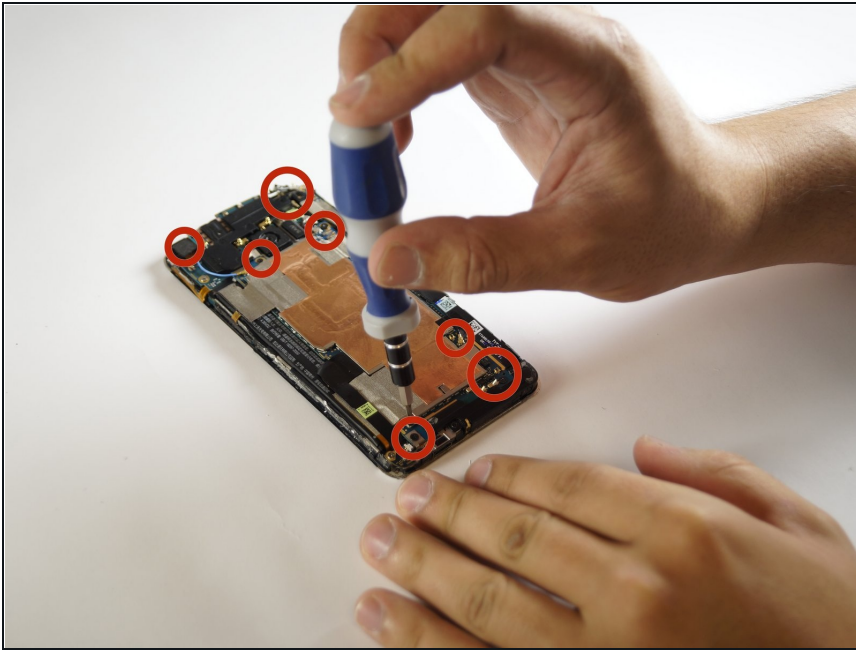
## Step 5



- Pry the back open once loose and lift. The back panel will come off with time.

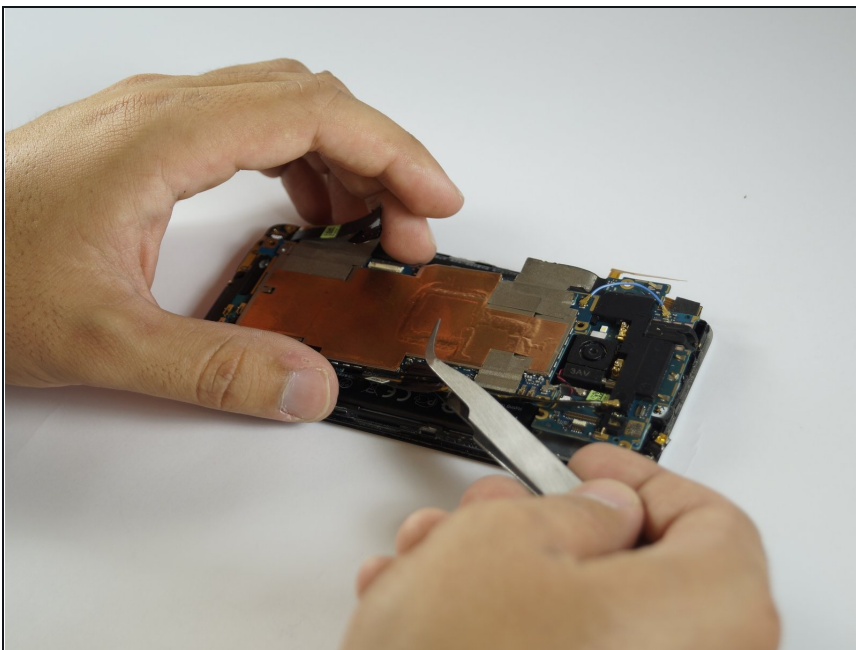


## Step 6



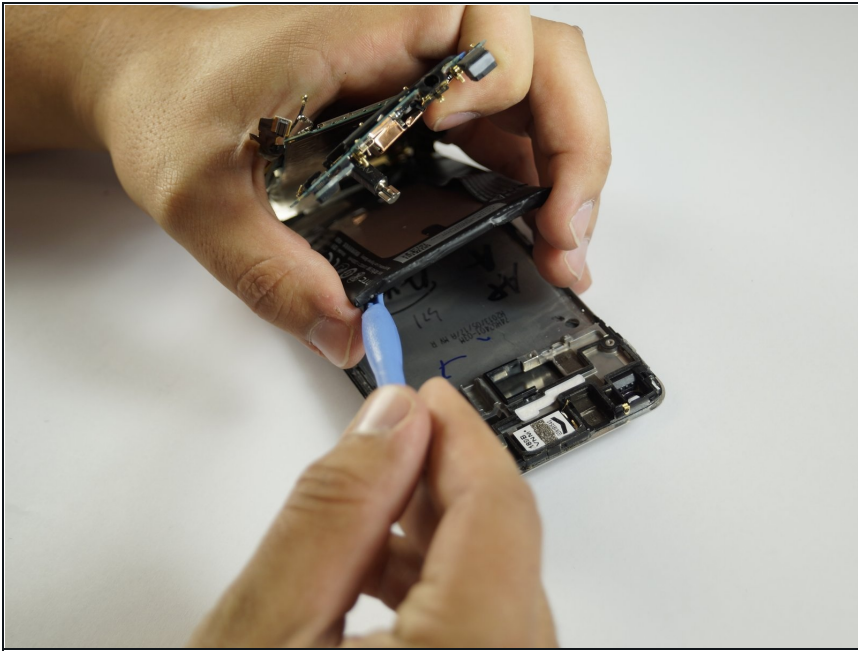
- Remove all the #000 screws with a #000 Phillips screw driver.
- ① Some screws are hidden by tape so remove the tape and check for screws.

## Step 7



- Lift the motherboard completely out of the phone with the [tweezers](#). (may stay attached at the bottom by tape)

## Step 8



- Use the blue opening tool to pry up the battery from the frame.
- ⓘ The battery is glued to the frame so you will have to put force.
- ⚠ Do not break the battery upon removal.

---

To reassemble your device, follow these instructions in reverse order.