



# Mac mini Mid 2010 Logic Board Replacement

Prerequisite only.

Written By: Andrew Bookholt



# INTRODUCTION

Prerequisite only.

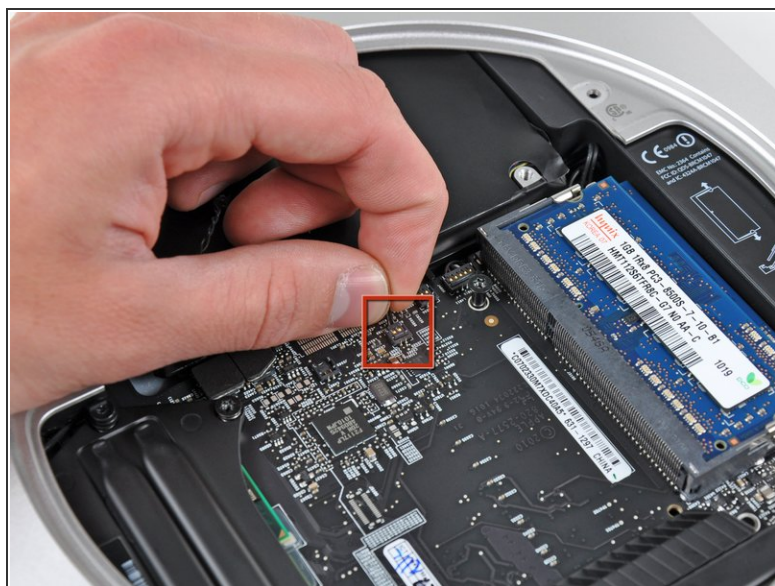
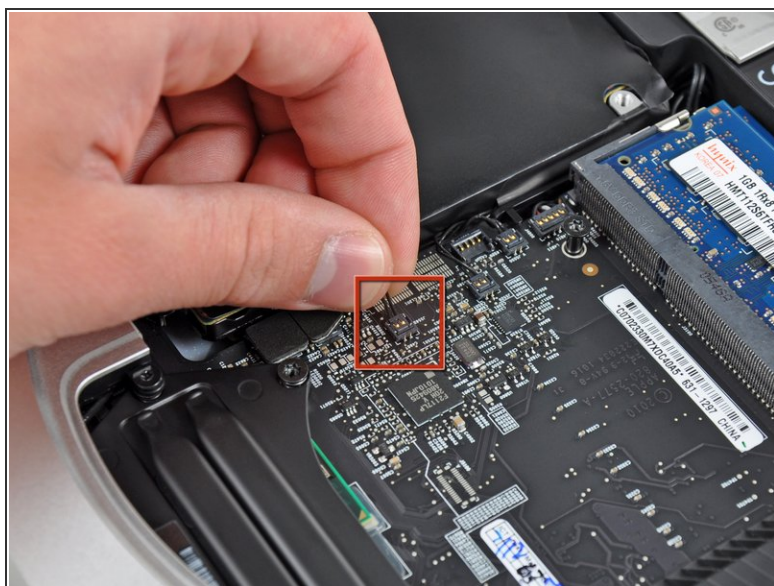


## Step 1 — Logic Board



- Remove the following three screws:
  - One 5.0 mm T8 Torx or 2.0 mm Hex screw (either will work)
  - One 16.2 mm T6 Torx screw
  - One 26 mm T6 Torx standoff

## Step 2



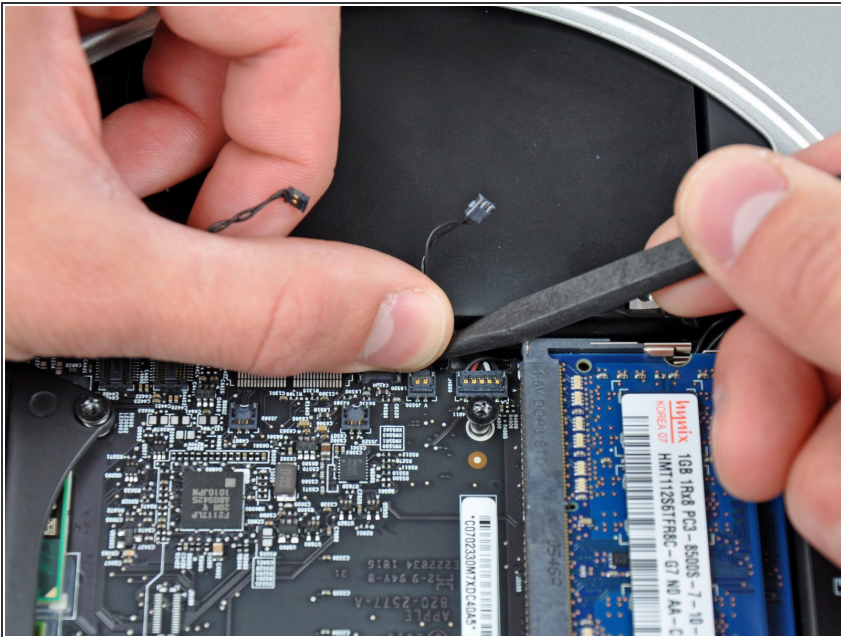
- Carefully pull the wires for both hard drive thermal sensors upward to lift their connectors up and out of the sockets on the logic board.

### Step 3



- Use the flat end of a spudger to pry both the hard drive and optical drive connectors up out of their sockets on the logic board.

### Step 4



- To disconnect the optical drive thermal sensor, pinch its cables between your thumb and a spudger and pry the spudger upward to lift the connector up and out of its socket on the logic board.





## Step 5



- Use the tip of a spudger to lift the IR sensor connector up and out of its socket on the logic board.

## Step 6



-  To remove the logic board, two cylindrical rods must be inserted into the holes highlighted in red. Inserting instruments into any logic board holes other than the ones highlighted in red may destroy the logic board.
- Insert a [Mac mini Logic Board Removal Tool](#) into the two holes highlighted in red. Be sure it makes contact with the outer case below the logic board before proceeding.
  -  If you don't have a Logic Board Removal Tool handy, you can use two tools having a maximum diameter of 2.5 mm instead. Just insert one into each of the highlighted holes.
  - Carefully pull the tool toward the I/O board. The logic board and I/O board assembly should slightly slide out of the outer case.
  - Cease prying when the I/O board is visibly separated from the outer case. Remove the Mac mini Logic Board Removal tool.

## Step 7



- Simultaneously push the two plastic clips on the far left and right sides of the I/O board toward the middle of the I/O board and pull the I/O board away from the outer case.

## Step 8



- Pull the I/O board/logic board assembly out of the outer case enough to access the power connector.
- Use a pair of tweezers to disconnect the power cable from the logic board.
- ⓘ Pull the power cable connector toward the optical drive opening.

## Step 9



- Carefully slide the logic board assembly out of the mini, minding any cables that may get caught.

To reassemble your device, follow these instructions in reverse order.