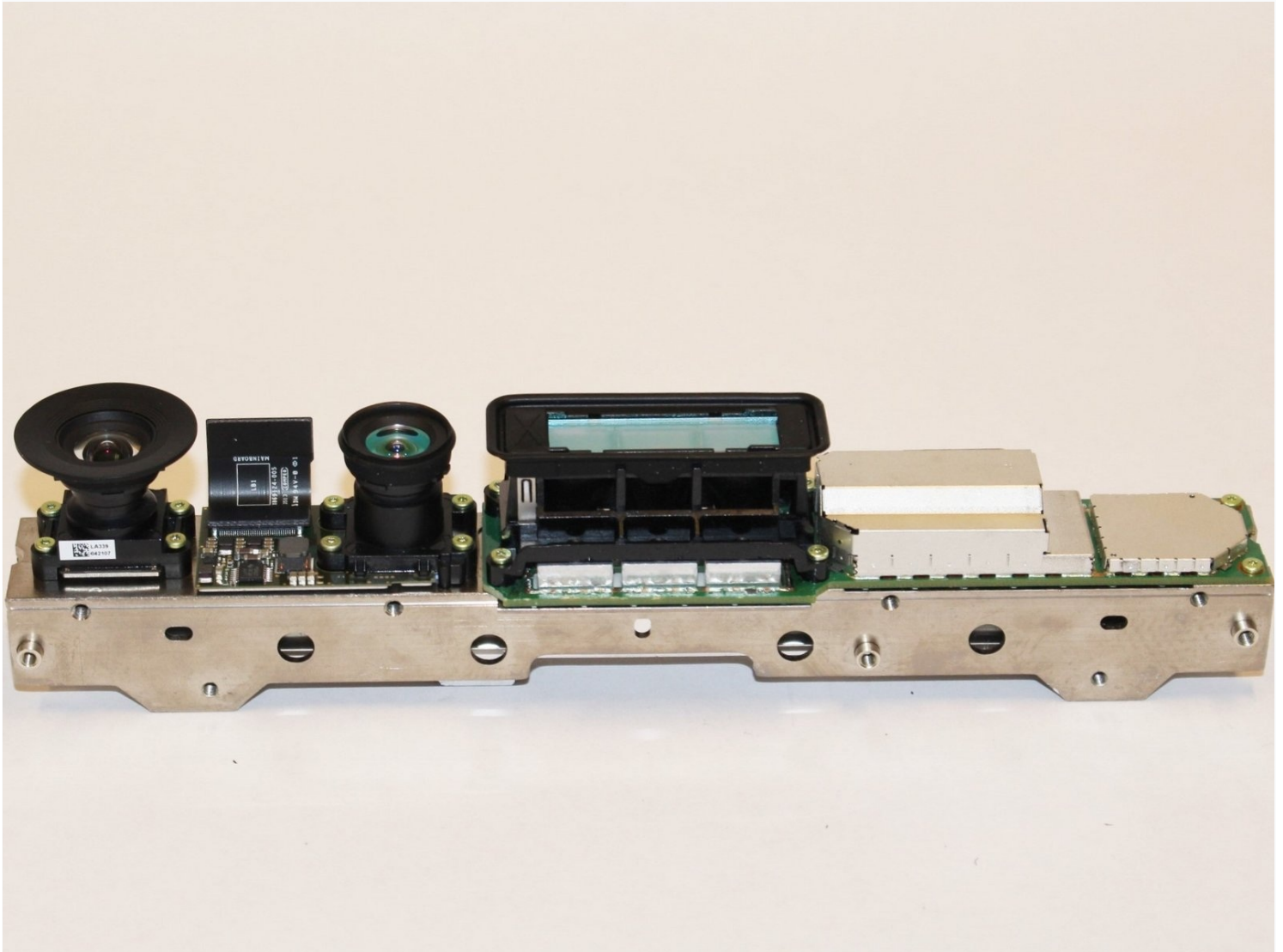




Xbox One Kinect Colour Camera Replacement

The colour camera is used to capture visual...

Written By: Malak Anshassi



INTRODUCTION

The colour camera is used to capture visual data. It is mounted on the heat sink inside the Kinect.

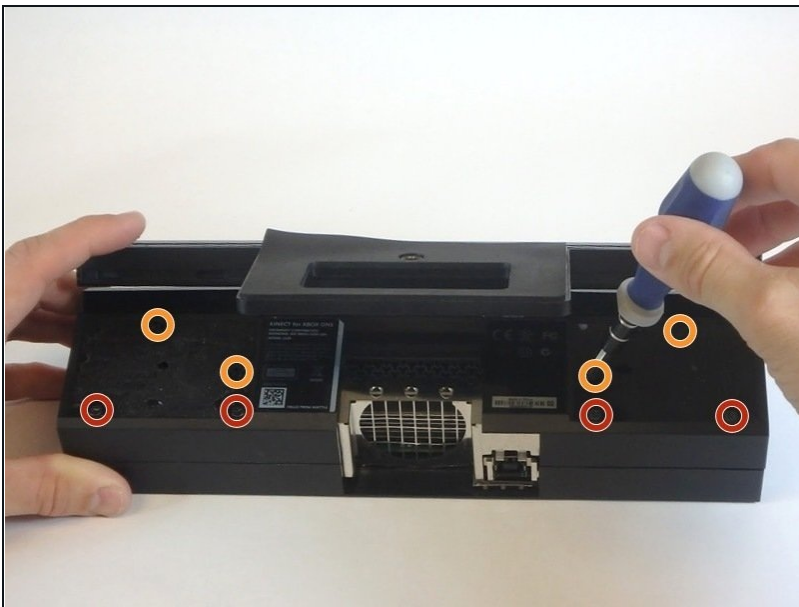
TOOLS:

Spudger (1)

TR9 Torx Security Screwdriver (1)

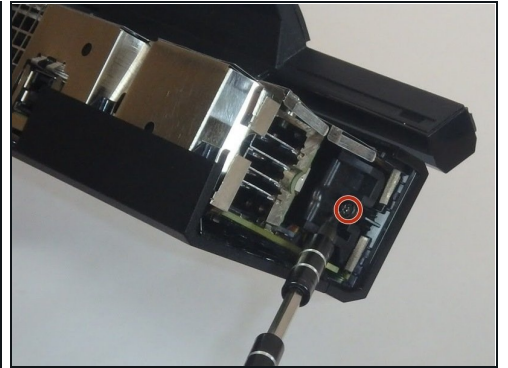
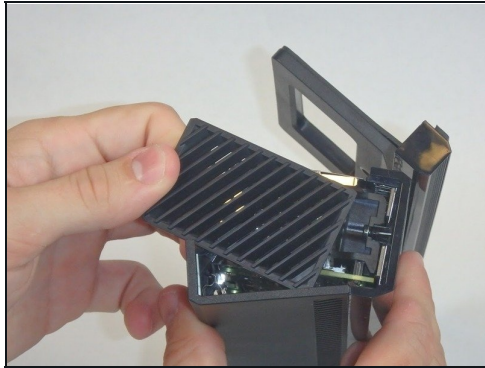
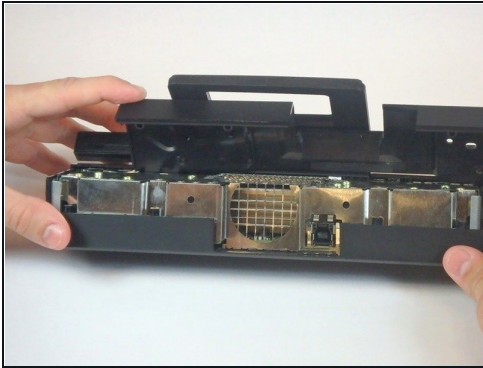
T5 Torx Screwdriver (1)

Step 1 — Outer Shell



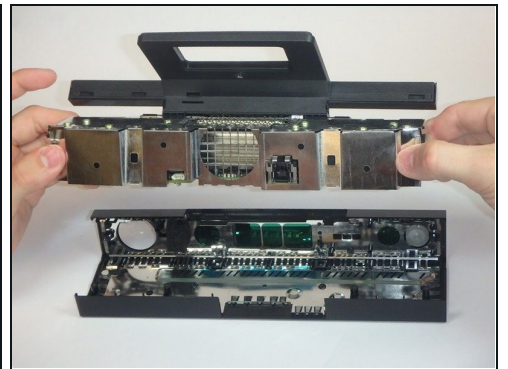
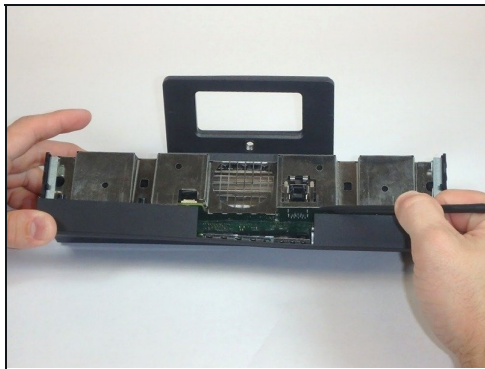
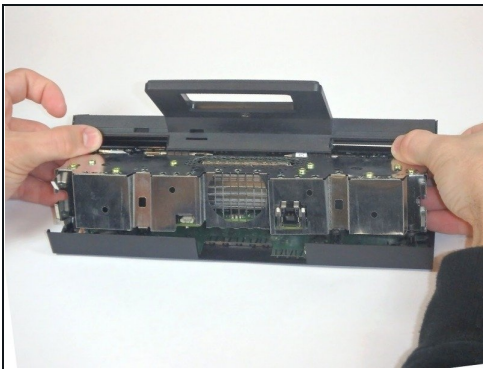
- Remove the sticker on the underside of the device.
- Remove the four 3.1x23.5 mm T10 screws underneath the sticker.
- While you're at it, remove the four 3.1x7.5 mm T10 screws beneath the sticker. Make note of the sizes and locations of the screws.

Step 2



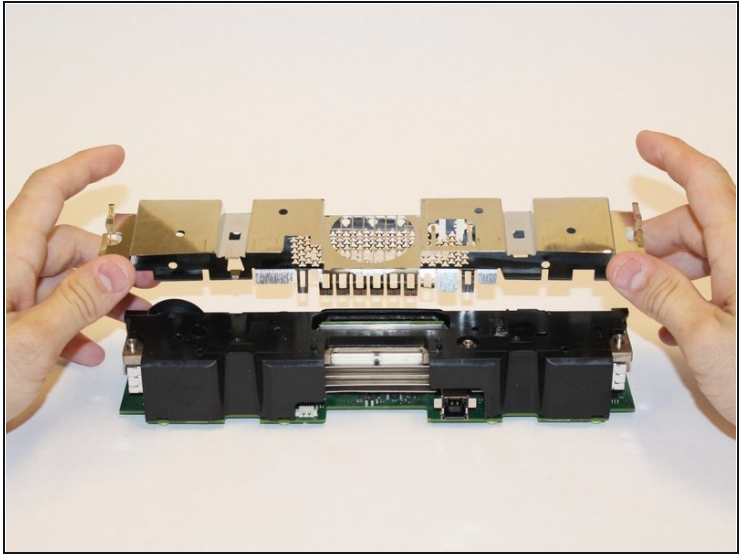
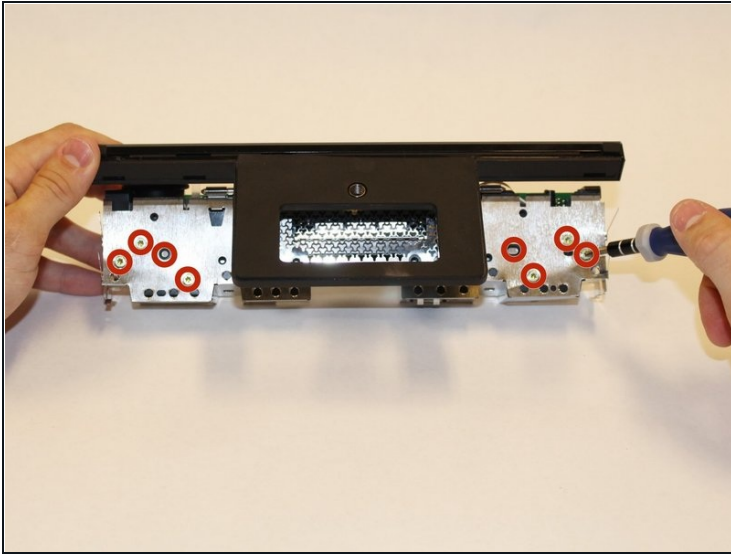
- Remove the back panel.
- Remove the black panels on either side of the Kinect, and remove the 3.1x7.5mm T10 screws underneath them.

Step 3



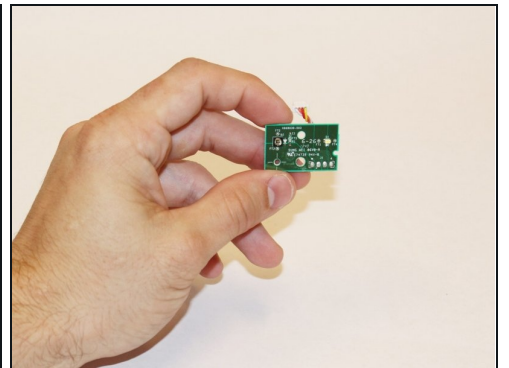
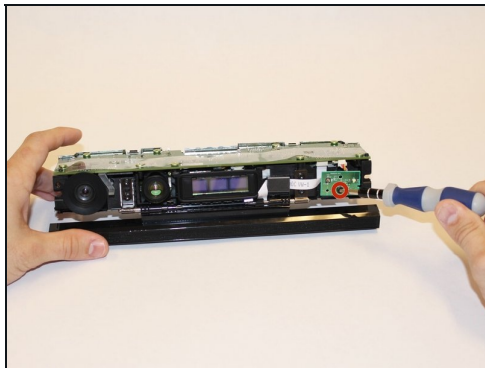
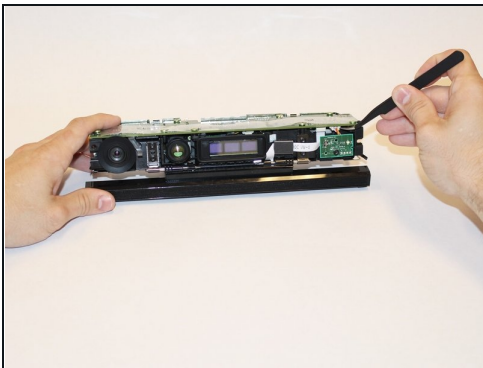
- Using your thumbs, press firmly against the outer case on either side of the stand. This will disengage the internal assembly.
- Lift the internal assembly with the spudger.
- Remove the assembly from the case. You now have access to the inner shell of the Kinect, along with the heat sink, microphone, and LED sensor.

Step 4 — Heat Sink Assembly



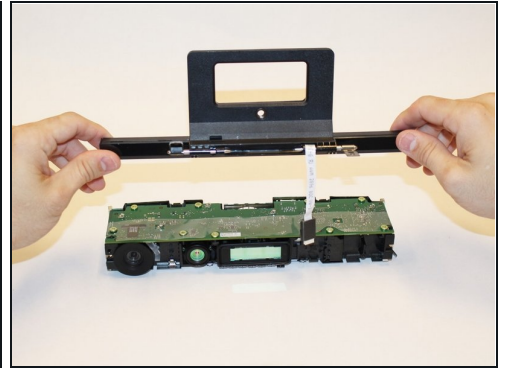
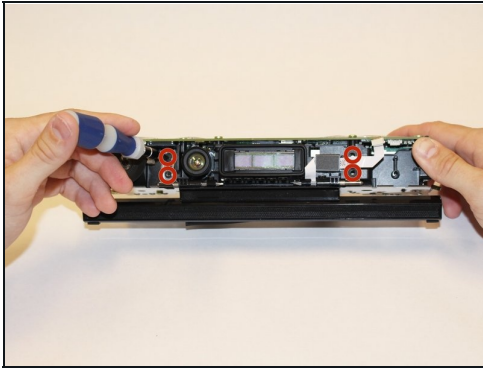
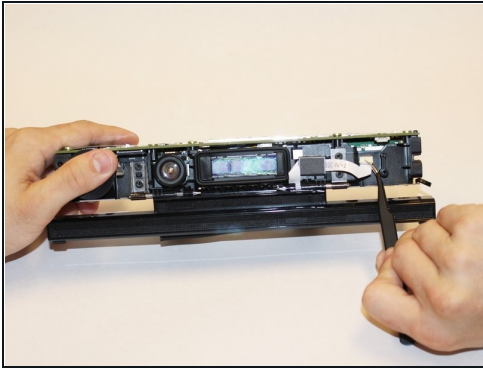
- Remove the eight 2.9x7.6 mm T9 screws from the rear of the internal case.
- Lift the internal metal case from the plastic shell enclosing the heat sink assembly.

Step 5



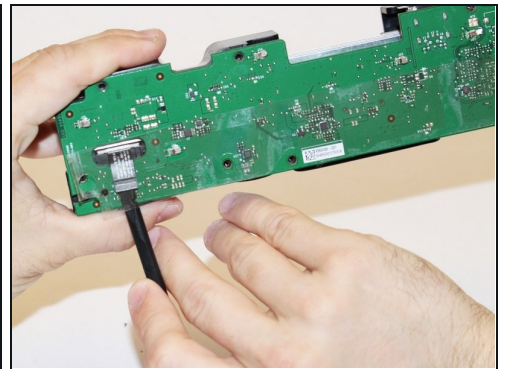
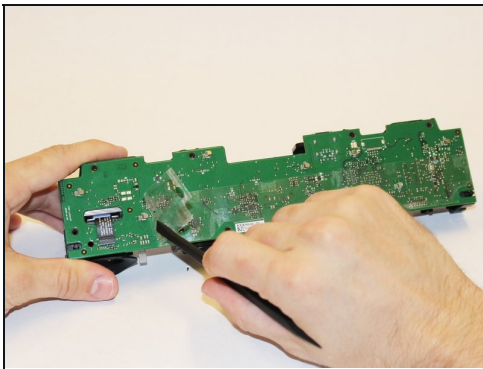
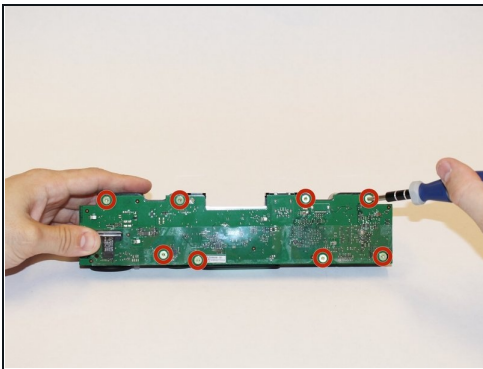
- Disconnect the ribbon cable between the sensor driver board and the motherboard.
- Remove the 3.0x7.5 mm T9 screw holding the sensor driver board to the heat sink.
- Remove the infrared sensor board for the Kinect.

Step 6



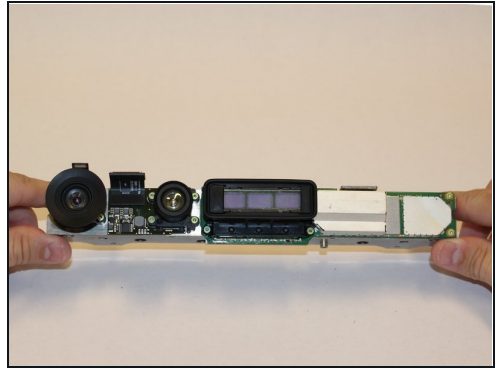
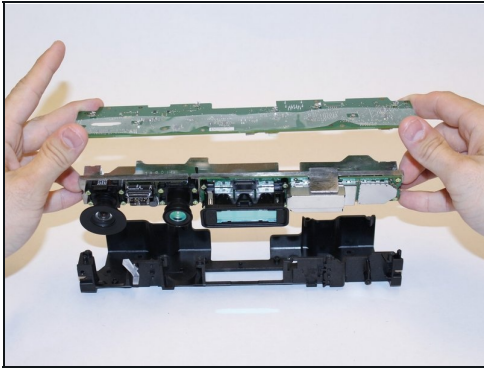
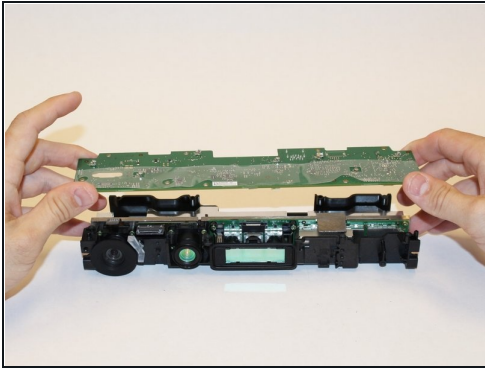
- Detach the ribbon cable leading to the microphone with the tweezers.
- Remove the four 3.1x7.7 mm T9 screws connecting the microphone to the heat sink assembly.
- Remove the stand.

Step 7



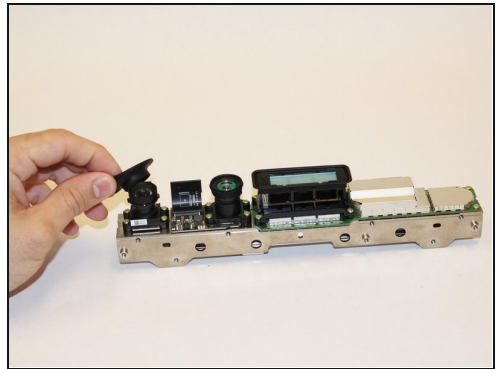
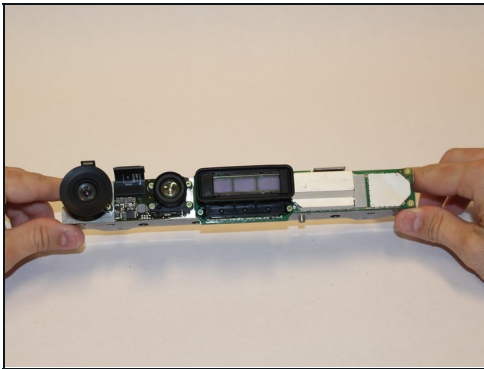
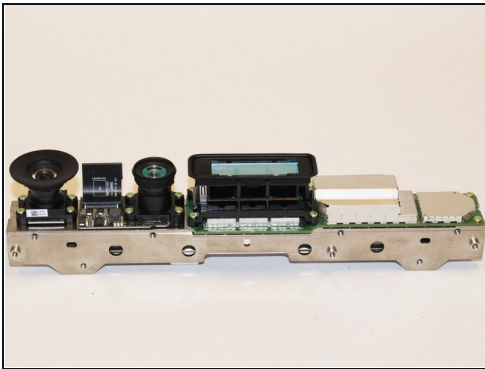
- Remove the eight 3.0x7.6 mm T9 screws from the motherboard.
- Peel away the plastic film from the motherboard using the spudger.
- Detach the ribbon cable leading to the color camera using the spudger.

Step 8



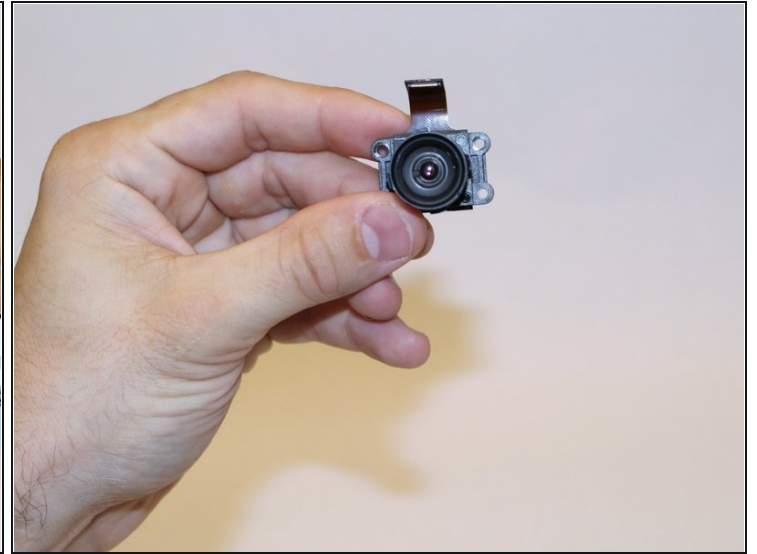
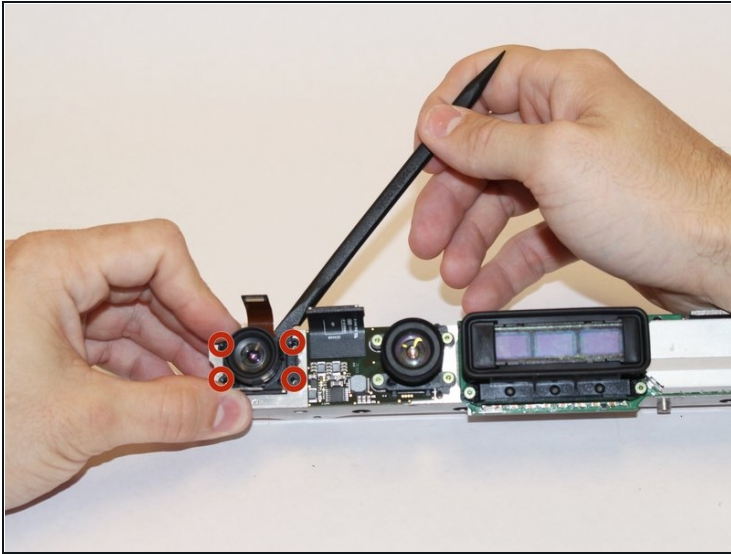
- Lift the motherboard and the heat sink assembly from the plastic shell. The components attached to the heat sink are now accessible.

Step 9 — Colour Camera



- Go ahead and start by removing the Colour Camera's lens cap. This way you can remove the Camera without anything in your way.

Step 10



- Using the T5 screwdriver, remove the four 1.9x10.2 mm screws from the four corners of the camera.
- With the spudger inserted in between the camera and the metal casing, carefully prop up the camera.

To reassemble your device, follow these instructions in reverse order.