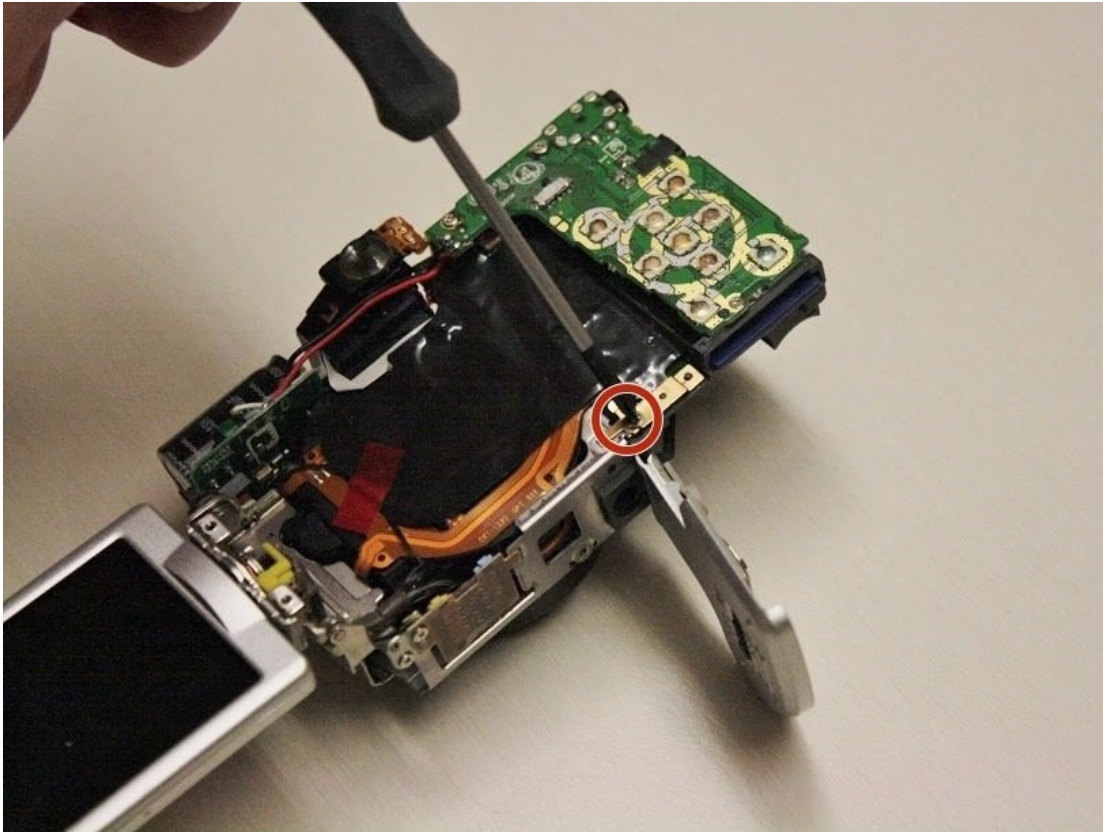




Canon PowerShot A630 Battery Door Replacement

Written By: Alicia Burns



🔧 **TOOLS:**

Phillips #00 Screwdriver (1)

Tweezers (1)

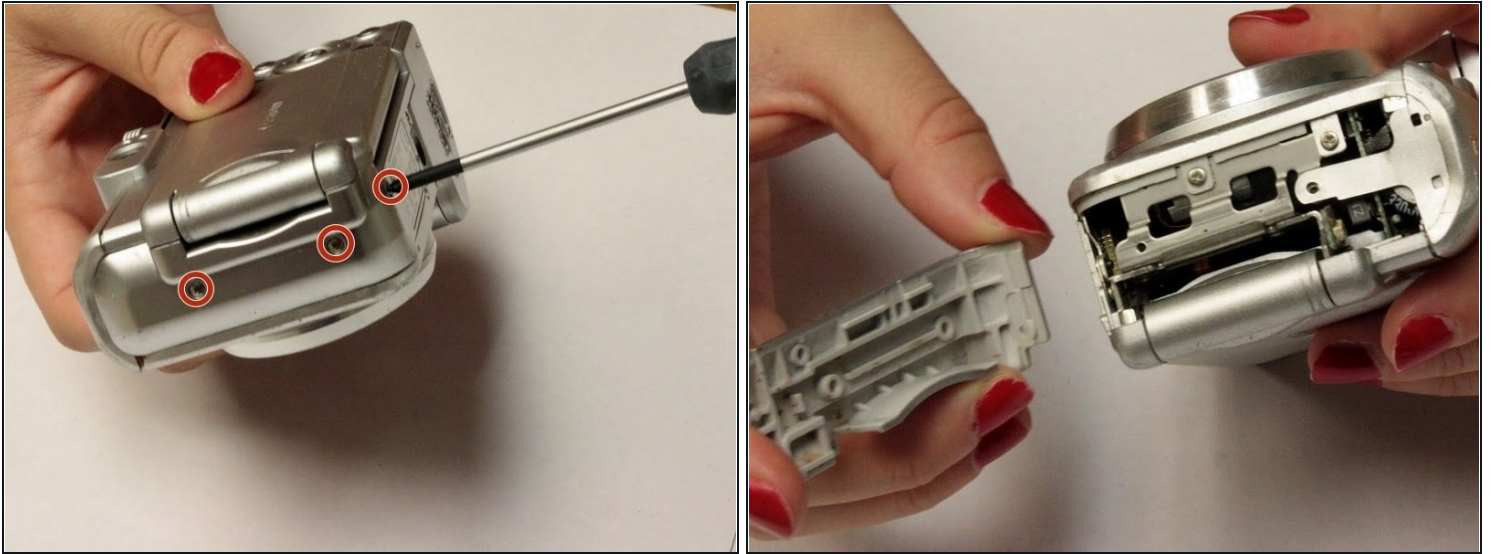
Spudger (1)

Step 1 — Front Panel



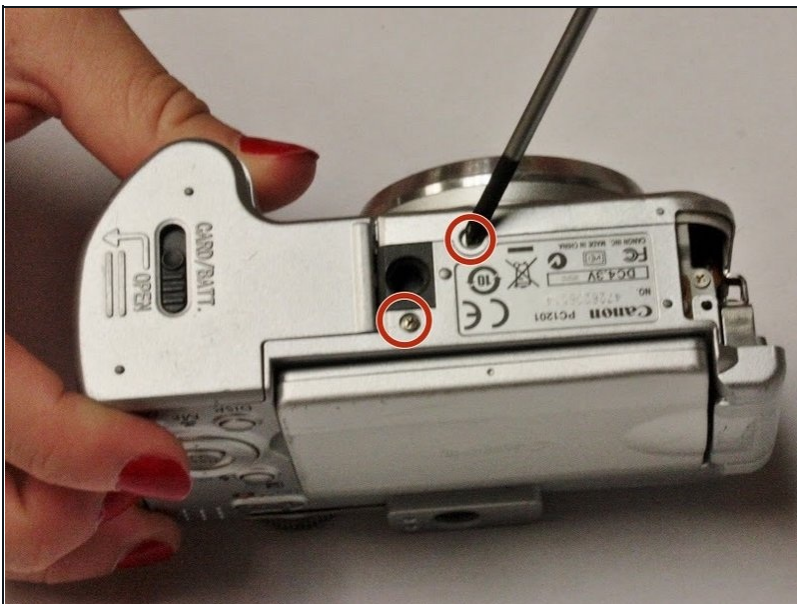
- Open the battery door by sliding the tab on the battery door while pushing the battery door away from the camera.
- Remove batteries.

Step 2



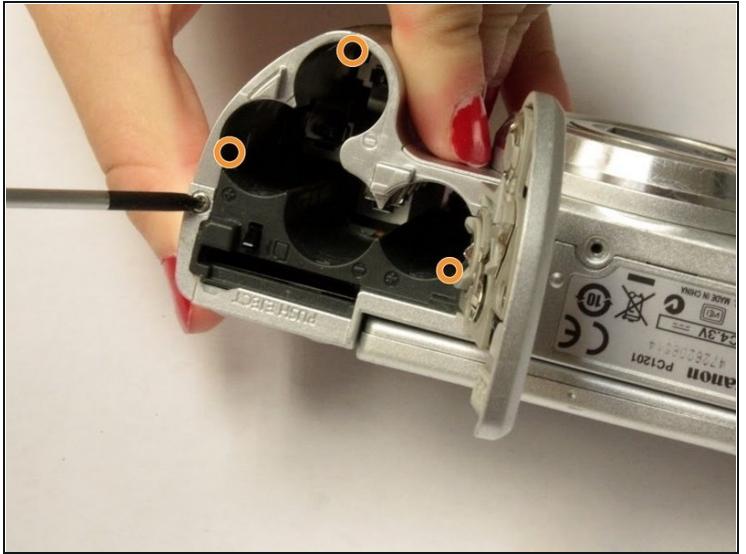
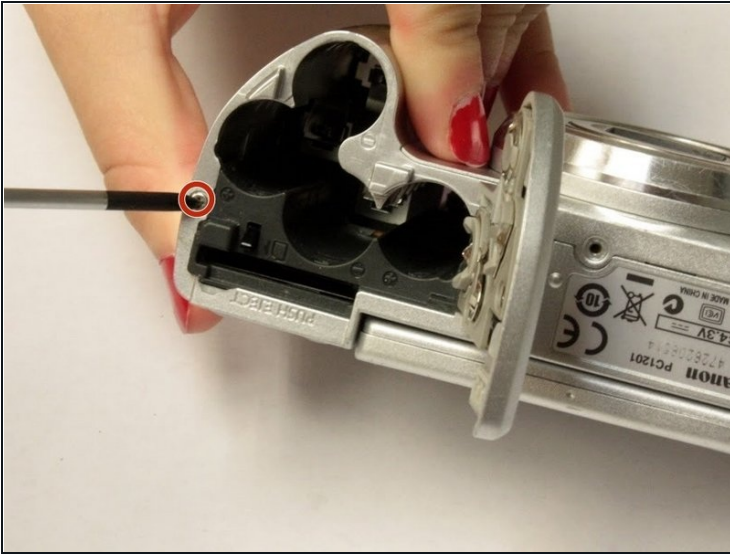
- Remove the three indicated .2mm screws using a Phillips #00 screwdriver.
- Gently pull off side-panel to remove it.

Step 3



- Remove the two indicated .2mm screws using a Phillips #00 screwdriver.

Step 4



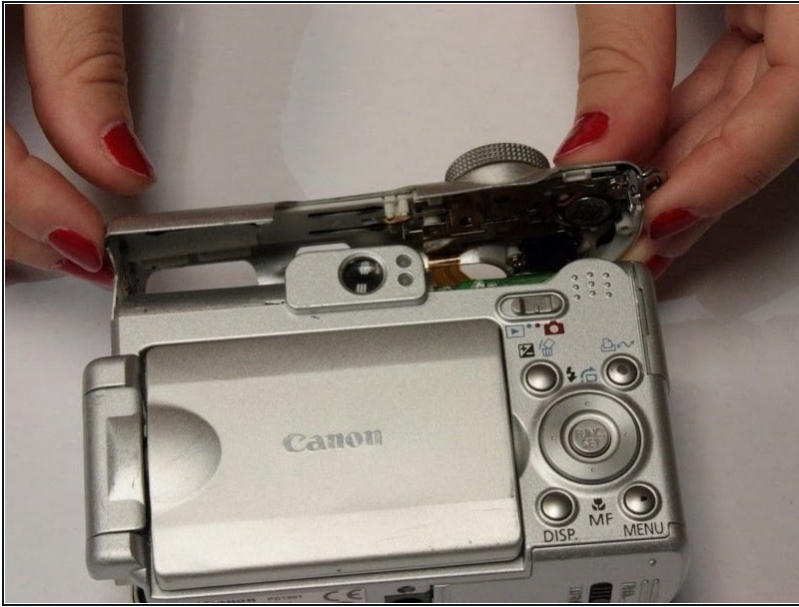
- Remove the indicated .2mm screw using a Phillips #00 screwdriver.
- Remove the three .2mm screws located on the internal side of the top panel within the battery chamber using a Phillips #00 screwdriver.

Step 5



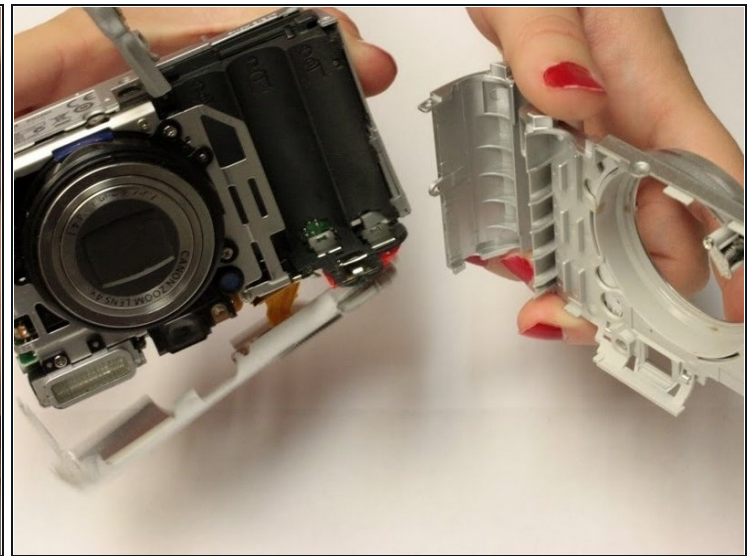
- Open 'DIGITAL A/V OUT' door on camera.
- Remove the two indicated .2mm screws using a Phillips #00 screwdriver.

Step 6



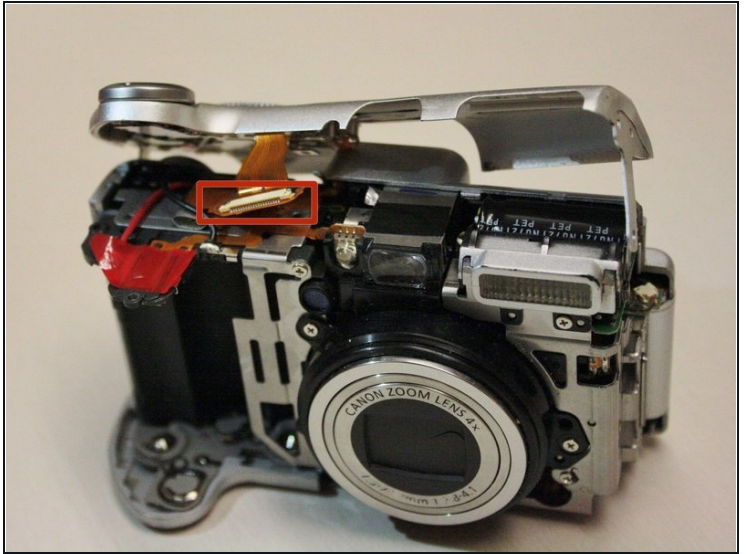
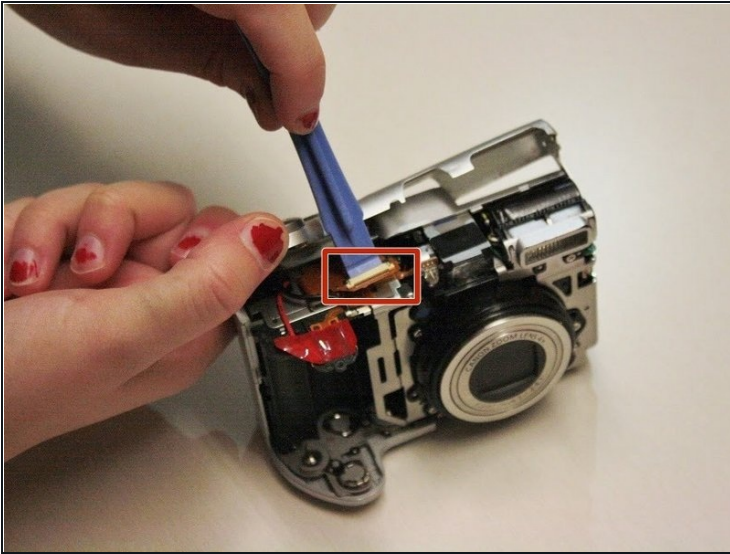
- Grip the sides of the top panel and gently pull to separate the top panel from the camera body.
- ① The top panel will not completely detach.

Step 7



- Gently pull the front and back panels apart, and use a Phillips #00 screwdriver to remove the screw connecting the panels.
- Gripping the top and bottom, gently pull the front panel away from the camera body to remove it.

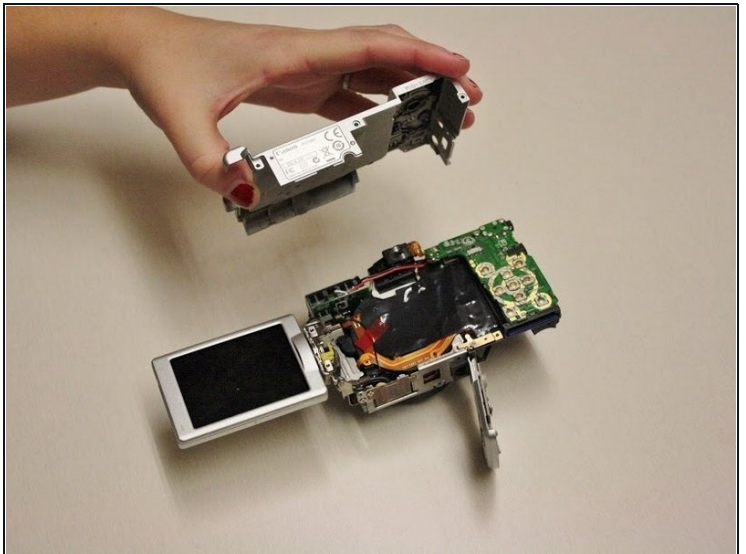
Step 8 — Back Panel



- Use the spudger to gently pull back the retaining clip and pull the ribbon out.
- The top panel should now be completely detached from the camera.

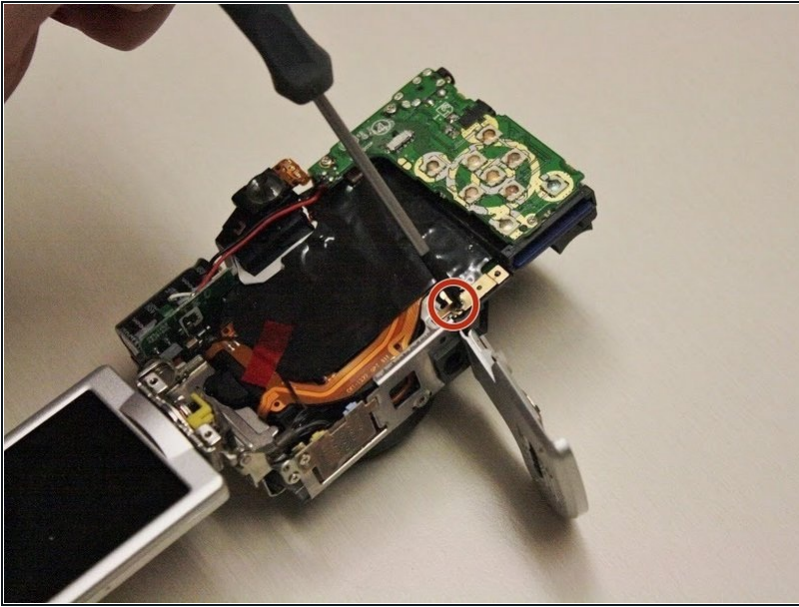
⚠ Applying too much force to the spudger may damage the retaining clip.

Step 9



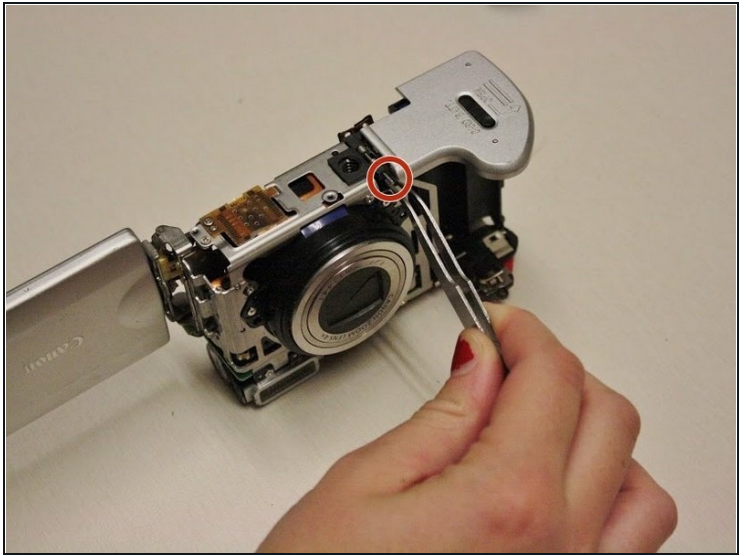
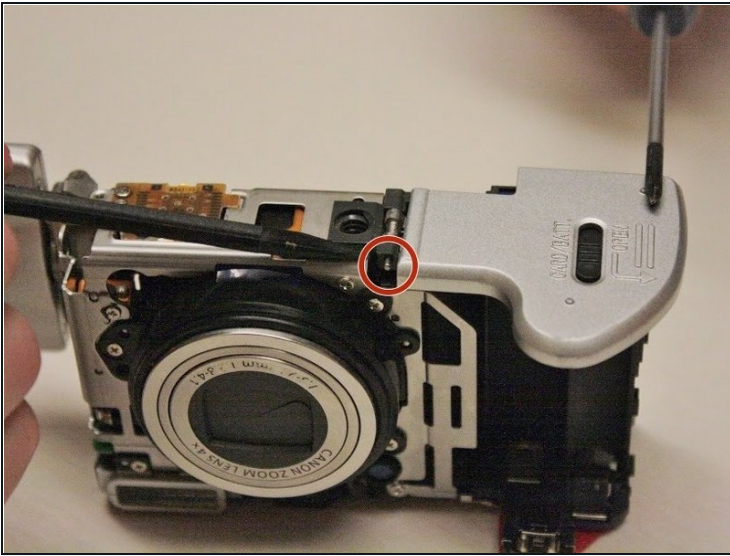
- Remove .2 mm screw using a #00 Philips screwdriver.
- Gently pry off back panel to remove it.

Step 10 — Battery Door



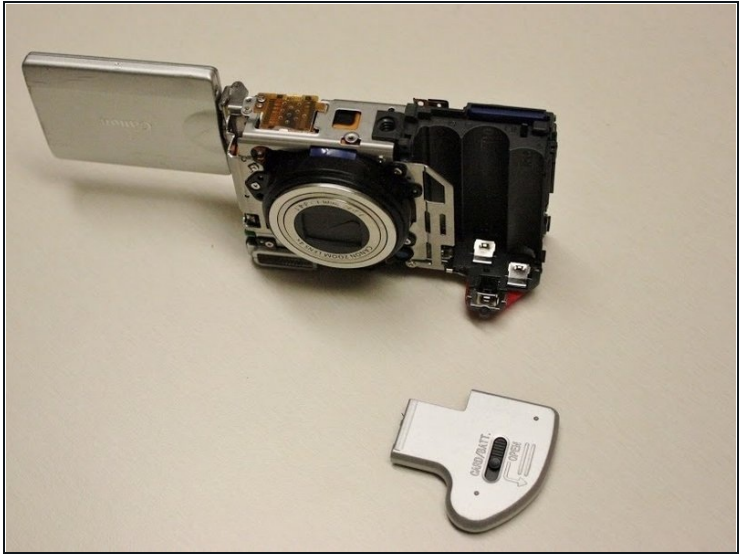
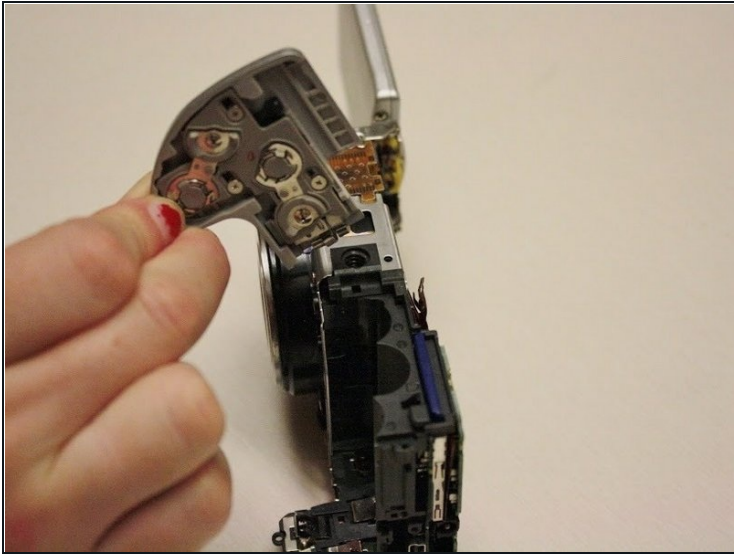
- Remove .2 mm screw using a #00 Philips screwdriver.

Step 11



- Using tweezers, gently pull remove the small rod in the battery door hinge.

Step 12



- Gently pull up on the battery door to remove it.

To reassemble your device, follow these instructions in reverse order.