



BLU Advance 4.0 Speaker Replacement

The guide will help you replace the speaker in...

Written By: Brandon Phillips



INTRODUCTION

The guide will help you replace the speaker in a BLU Advance 4.0 cell phone.

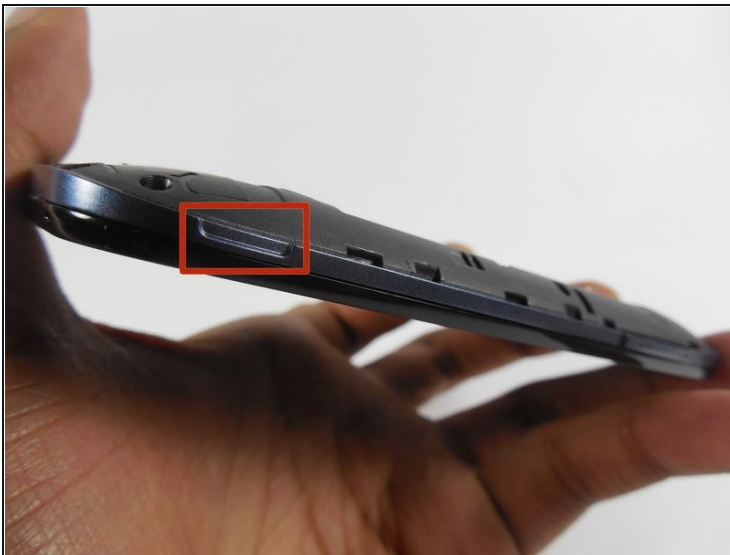
TOOLS:

Phillips #00 Screwdriver (1)
Lead-Free Solder (1)
Safety Glasses (1)
Soldering Iron (1)

PARTS:

BLU Advance 4.0 Speaker (1)

Step 1 — Removing the back cover



- With the back camera on the top side and facing you, find a notch on the bottom right side of the phone.
- Unclip the cover by raising it up from the notch and sliding a flat rigid tool along the edge.

Step 2 — Revealing the motherboard



- Remove the battery.
- Remove 3 screws from each side with a Phillips 00 screwdriver.
- Unclip the screen by sliding a flat rigid tool between the black and the blue side-band.
- Pop off the blue side-band to be exposed to the motherboard.

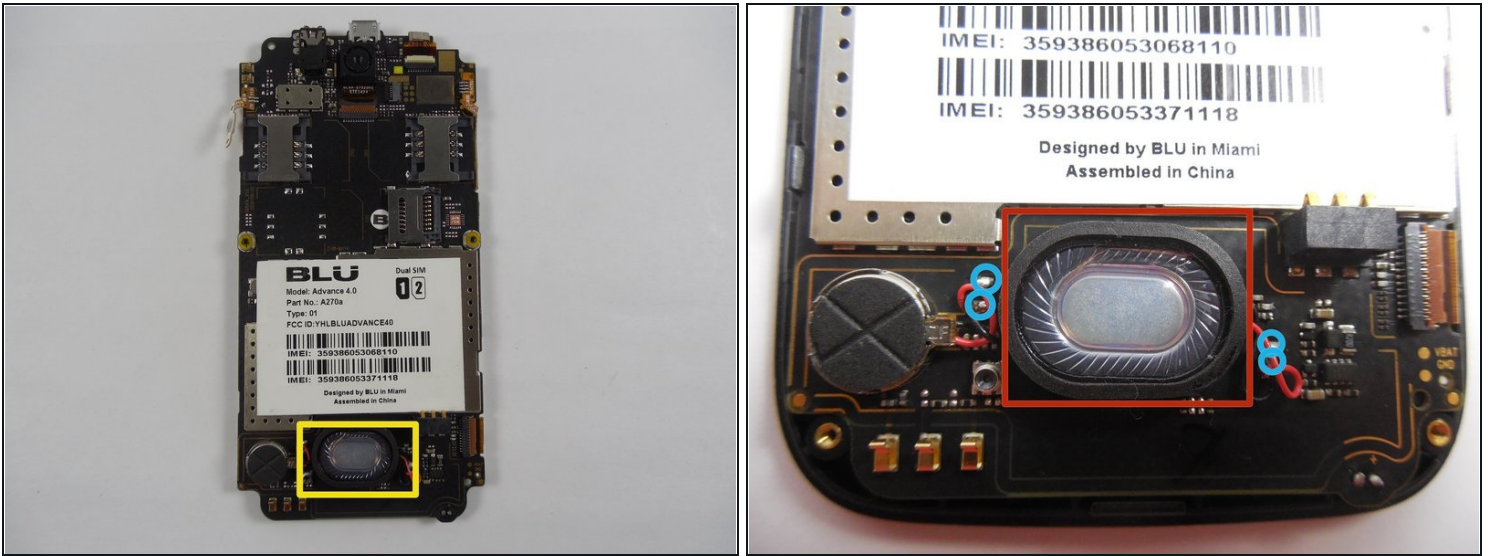
Step 3 — Separating motherboard from screen



- Remove 2 black plastic buttons from each side, exposing metallic padding.
- Gently pry the metallic padding off the motherboard with a flat rigid tool.
- Carefully separate the clip-on tabs while lifting the motherboard away from the screen.

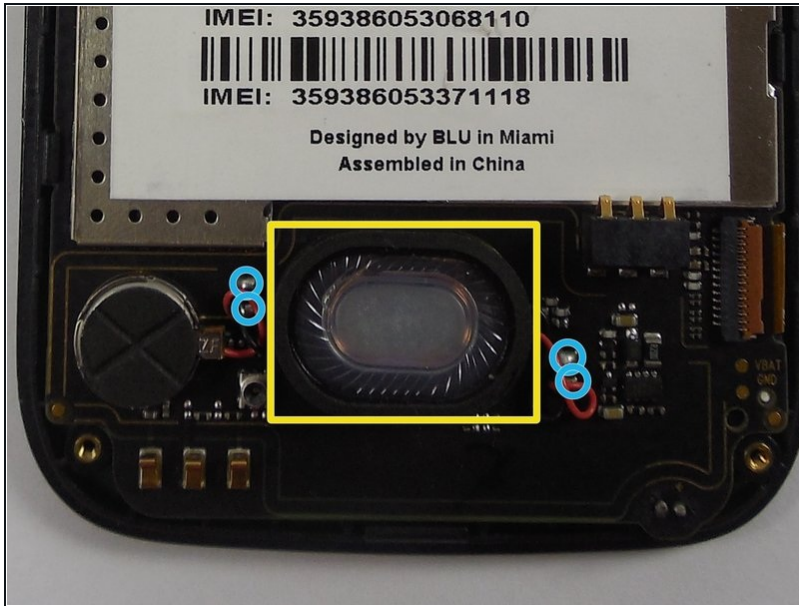
⚠ Forcefully separating the motherboard from the screen can further damage your device.

Step 4 — Remove the solder on the old speakers



- Before starting, you should plug in and begin to heat up your soldering iron.
- Flip the circuit board over and find the speaker connections to the red and black wires.
- Take your soldering iron and heat the area where the wires are connected
- Take your [Solder sucker](#) and remove the solder at the connection.
- Carefully lift the speaker off of the circuit board.

Step 5 — Solder in the New Speakers



- Place the new speaker into the spot where you removed the old speaker.
- Next, add solder to the tip of your soldering iron.
- Solder all of the connections back into place as shown.

To reassemble your device, follow these instructions in reverse order starting from step 3