



Mac mini Late 2014 PCIe SSD Cable Replacement

Replace the PCIe SSD cable in a Late 2014 Mac mini.

Written By: Sam Goldheart



INTRODUCTION

Use this guide to replace the PCIe SSD cable in the SSD-only or Fusion drive models of the Mac mini Late 2014.



TOOLS:

- [iFixit Opening Tools](#) (1)
- [Spudger](#) (1)
- [TR6 Torx Security Screwdriver](#) (1)
- [T5 Torx Screwdriver](#) (1)



PARTS:

- [Cable, SSD Flex](#) (1)

Step 1 — Bottom Cover



- The bottom cover is clipped onto three screw posts.
- Pry near, but not right on the screw posts.

Step 2



- Use the plastic opening tool to pry the bottom cover up off of the Mac mini.

Step 3



- Lift and remove the bottom cover.


Step 4 — Antenna Plate



- Remove the following TR6 screws from the antenna plate:
 - Three 4.1 mm screws
 - Three 1.9 mm screws

Step 5




 Do not completely remove the antenna plate; it is still connected to the Mac mini by an antenna cable.

- With the I/O ports facing you, flip the antenna plate to the right to allow access to the antenna cable connector.

Step 6



- Remove the single 3.4 mm T6 screw and washer from the antenna cable.
-  Be careful not to lose the washer when removing the screw.

Step 7



- Use the point of a spudger to lift the antenna connector straight up off its socket on the airport card.

Step 8



- Carefully pull the antenna cable out from the gap between the power supply and case.

Step 9



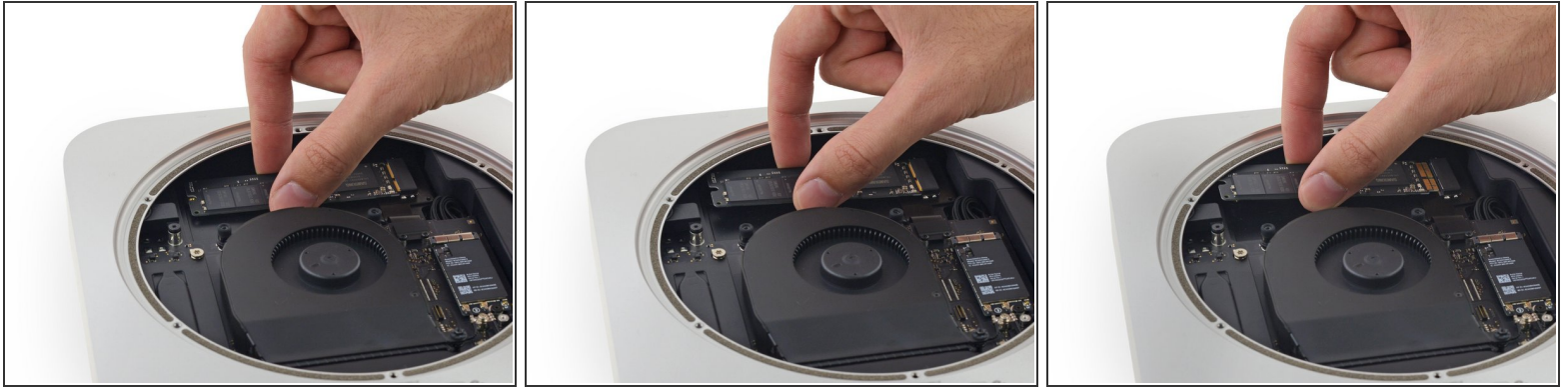
- Remove the antenna plate from the Mac mini.

Step 10 — SSD



- Remove the 5 mm T5 screw securing the SSD.

Step 11



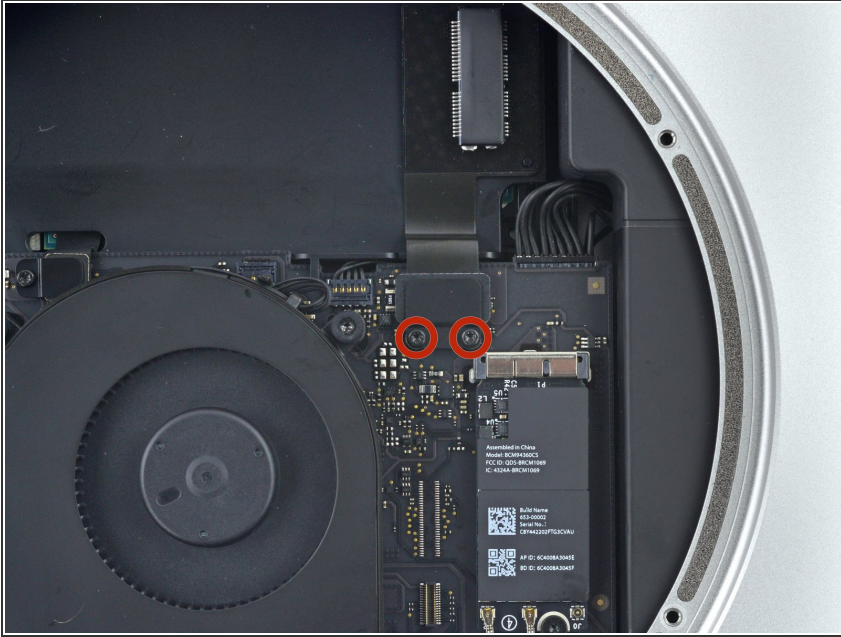
- Lift the free end of the SSD up slightly and pull it out of its socket.

Step 12



- Carefully lift the SSD out of the case without scratching or touching the gold contacts.

Step 13 — PCIe SSD Cable



- Remove the two 2.6 mm T6 screws securing the PCIe SSD cable bracket.

Step 14



- Remove the PCIe SSD cable bracket.

Step 15



- Use the flat end of a spudger to lift the PCIe SSD connector straight up off of its connector on the logic board.

⚠ Be careful not to pry up on the socket itself.

Step 16



- Slip the flat end of a spudger under the SSD cable to lift it off the adhesive holding it to the Mac mini.

Step 17



- Remove the PCIe SSD cable from the Mac mini.

To reassemble your device, follow these instructions in reverse order.