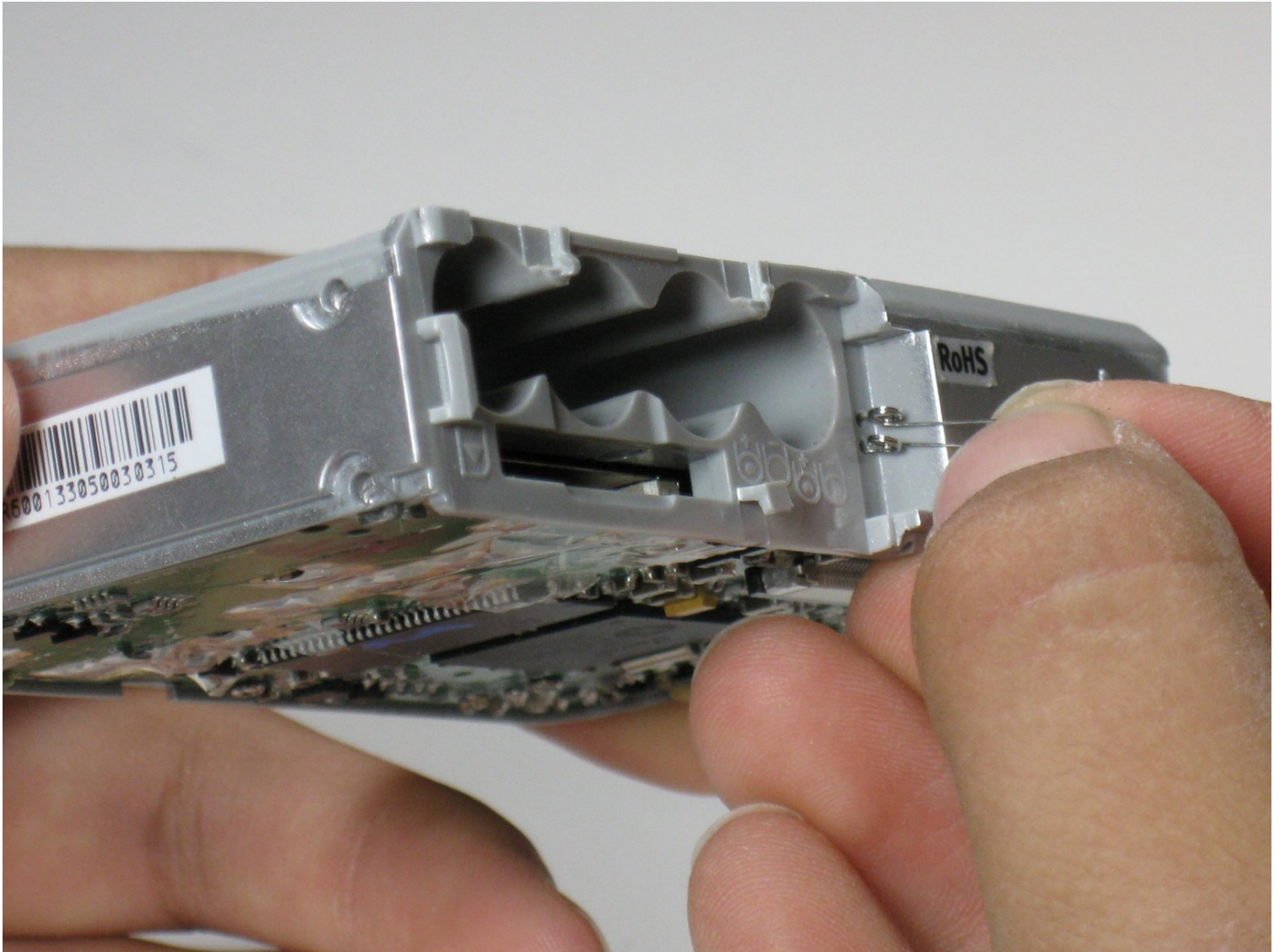




Disassembling Polaroid a520 Battery Cover

The Polaroid a520 Camera cover may be...

Written By: Dani



INTRODUCTION

The Polaroid a520 Camera cover may be removed/disassembled by the consumer at home, with no need for manufacturer involvement. This guide will assist users in the process by showing step-by-step which components should be removed for this purpose.

Note: this guide is **only** for the purpose of aiding in repairs to the Polaroid a520, and **only** for repairs that may be accessed through the battery cover.

TOOLS:

Phillips #00 Screwdriver (1)

Spudger (1)

Step 1 — Battery



- Place your thumb on the battery cover and push left towards the arrow.

① The cover will release and pop open.

Step 2



- Remove the batteries from the camera.

Step 3 — Casing



- Remove four 3 mm screws on the right side of the camera using a Phillips #1 screwdriver.
- ⓘ This will release the front and back casings.

Step 4



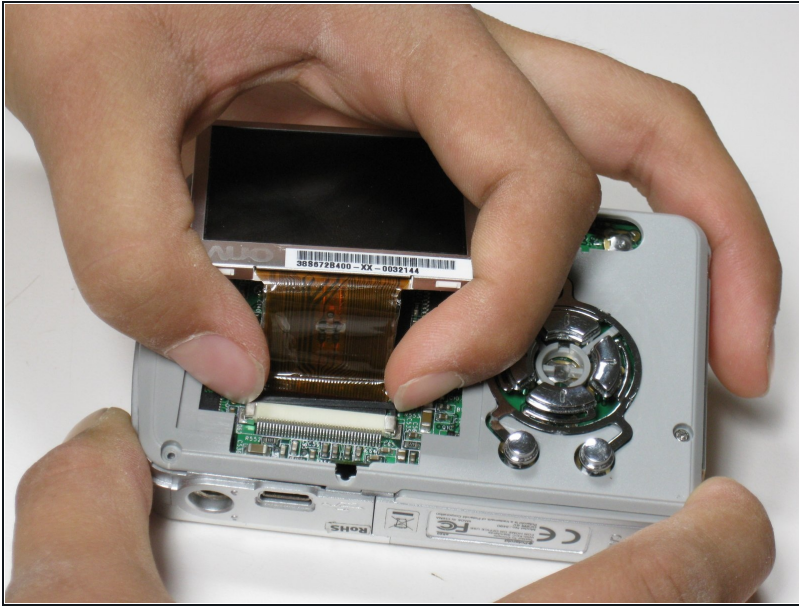
- Use your nail or a flat object to pry up the edge of the front casing. Push the casing up and back.
- ① Repeat this step for the back casing.

Step 5 — LCD Screen



- Under the screen, locate the black plastic strip that sits above the white plastic strip.

Step 6



- Pull both sides of the black piece upward-about a mm.
- ⚠ The black plastic piece is not meant to come all the way off, just enough to release the screen.
- Once the piece is lifted carefully slide the screen out of the slot.

Step 7 — Battery Cover



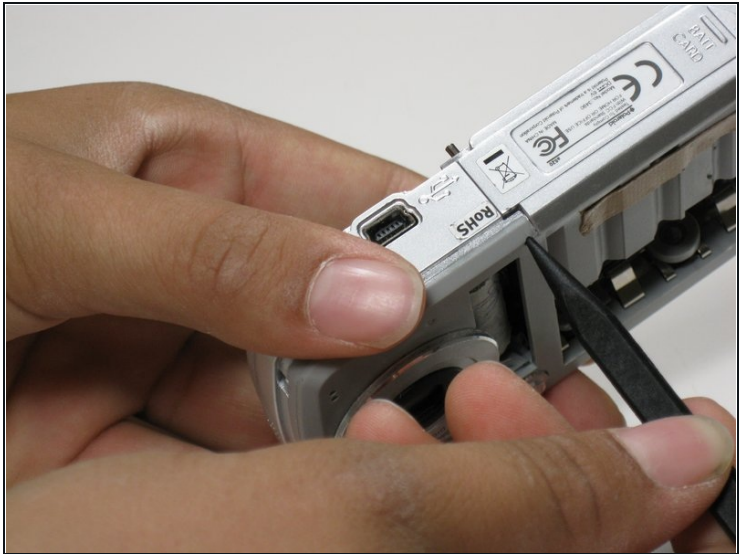
- Remove the four 6mm screws from the inner casing using a Phillips #00 screwdriver.

Step 8



- Pull the inner casing off. If all the screws are out, the casing will come off easily.

Step 9



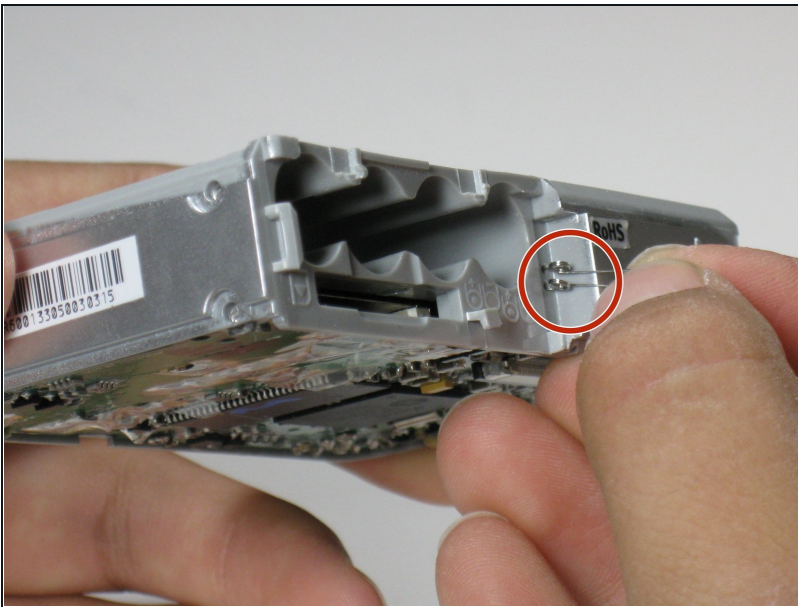
- Use the pointed end of a spudger to push the push-pin partly through.

Step 10



- From the other side pull the pin all the way out. The battery cover will fall off.

Step 11



- The spring can now be pulled out of its resting position/holes.
- ⓘ Once removed, be sure to set the spring somewhere you won't lose it.

To reassemble your device, follow these instructions in reverse order.