



Nintendo Wii Faceplate Replacement

Use this guide to replace your Wii's faceplate....

Written By: Andrew Bookholt



INTRODUCTION

Use this guide to replace your Wii's faceplate. Replacing the faceplate will provide new blue LEDs that light up around the optical drive opening.

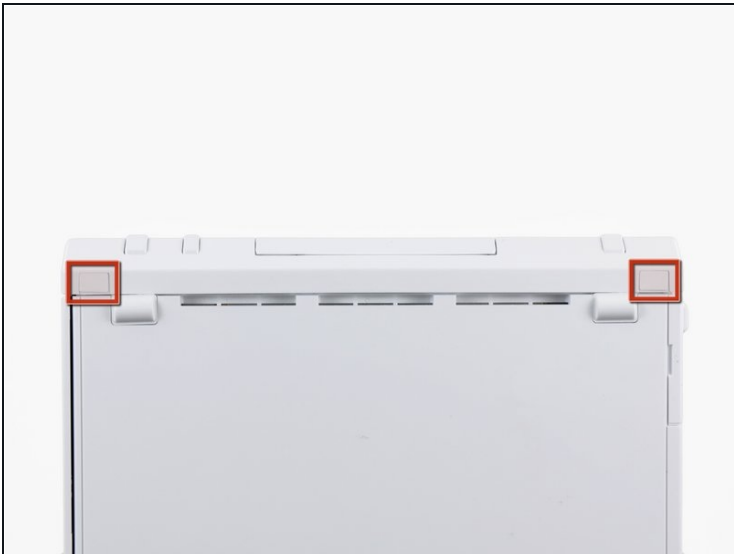
TOOLS:

[Metal Spudger](#) (1)
[Phillips #00 Screwdriver](#) (1)
[Tri-point Y1 Screwdriver](#) (1)
[Tweezers](#) (1)

PARTS:

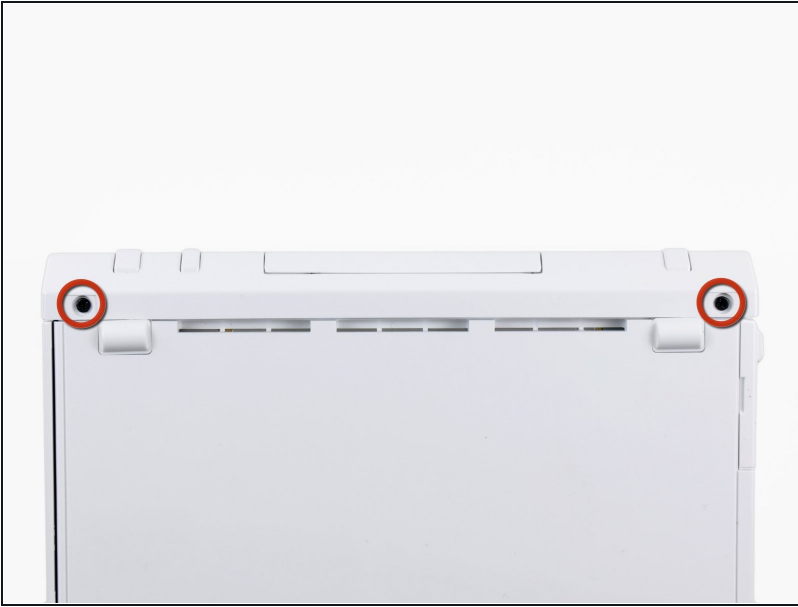
[Nintendo Wii Faceplate](#) (1)

Step 1 — Faceplate



- Use a metal spudger to remove the white plastic screw covers stuck to the lower case near the front of the Wii.

Step 2



- Remove the two 8.3 mm Tri-Point screws hidden under the covers you just removed.

Step 3



- Remove the single 5.9 mm Phillips screw under the controller port door nearest the faceplate.

Step 4



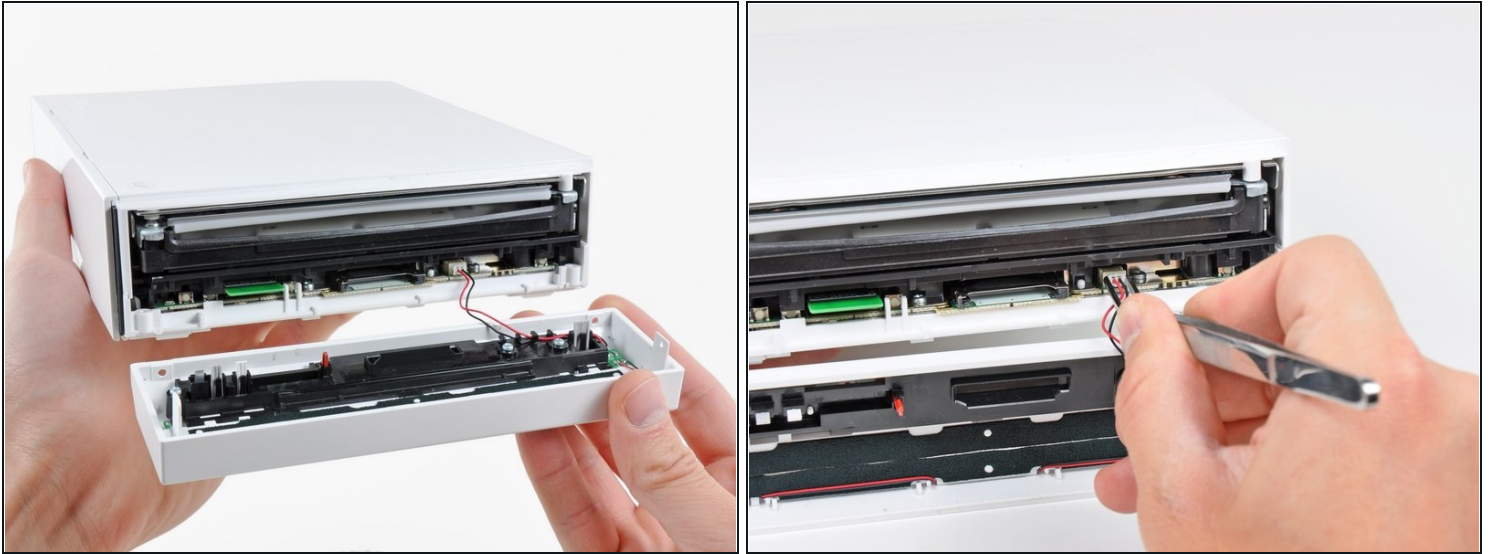
- Use a metal spudger to remove the rubber foot stuck to the side of the Wii near the DVD drive opening.

Step 5



- Remove the single 5.9 mm Phillips screw hidden under the foot you just removed.

Step 6



- Carefully pull the faceplate away from the front of the Wii.
- Use a pair of [tweezers](#) to disconnect the LED cable's plastic connector from the motherboard.
- Remove the faceplate.

To reassemble your device, follow these instructions in reverse order.