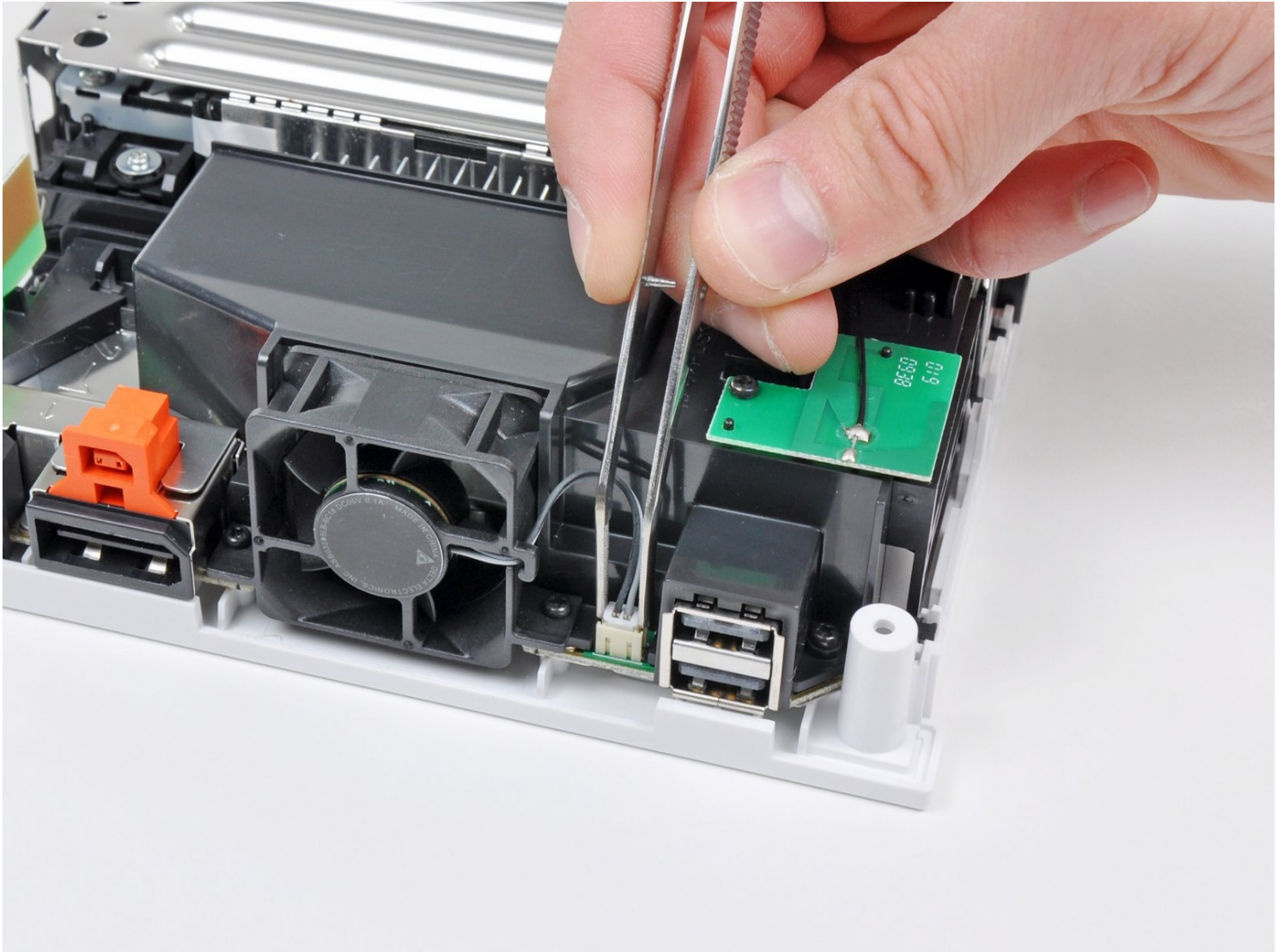




# Nintendo Wii Fan Replacement

Use this guide to replace a worn-out fan.

Written By: Andrew Bookholt



# INTRODUCTION

Use this guide to replace a worn-out fan.

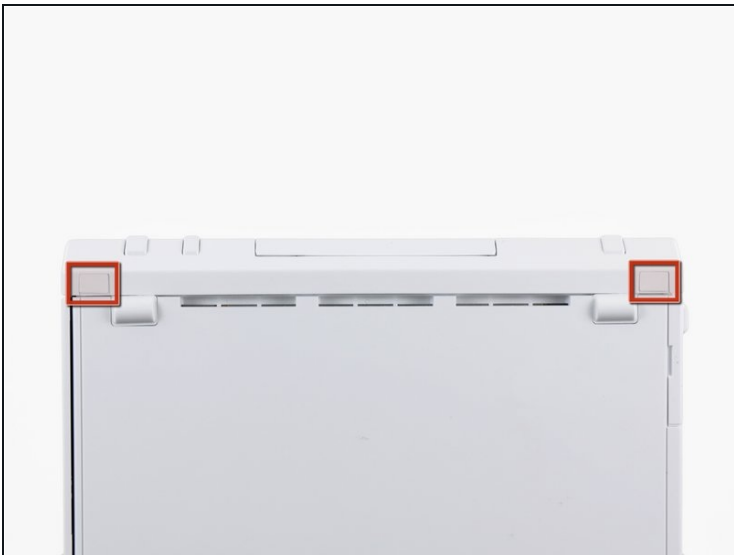
## TOOLS:

Metal Spudger (1)  
Phillips #00 Screwdriver (1)  
Tri-point Y1 Screwdriver (1)  
Tweezers (1)

## PARTS:

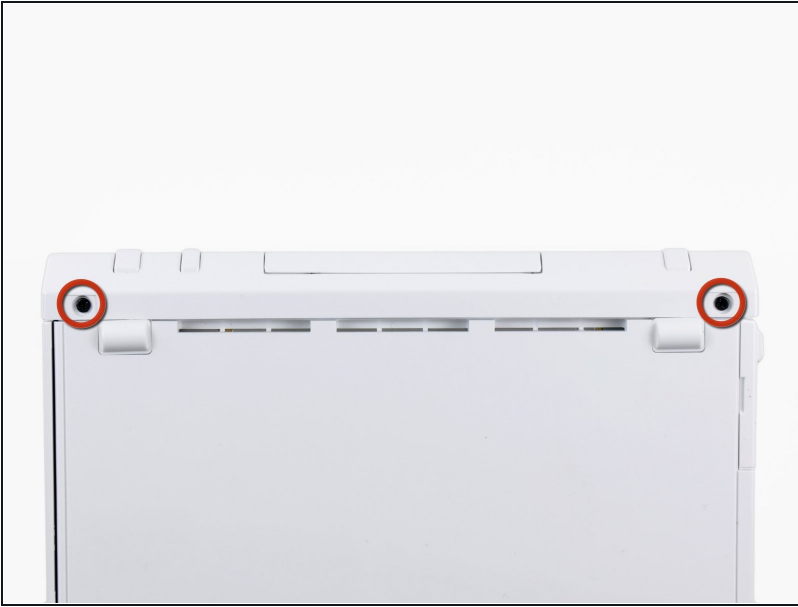
Nintendo Wii Fan (1)

### Step 1 — Faceplate



- Use a metal spudger to remove the white plastic screw covers stuck to the lower case near the front of the Wii.

## Step 2



- Remove the two 8.3 mm Tri-Point screws hidden under the covers you just removed.

## Step 3



- Remove the single 5.9 mm Phillips screw under the controller port door nearest the faceplate.

## Step 4



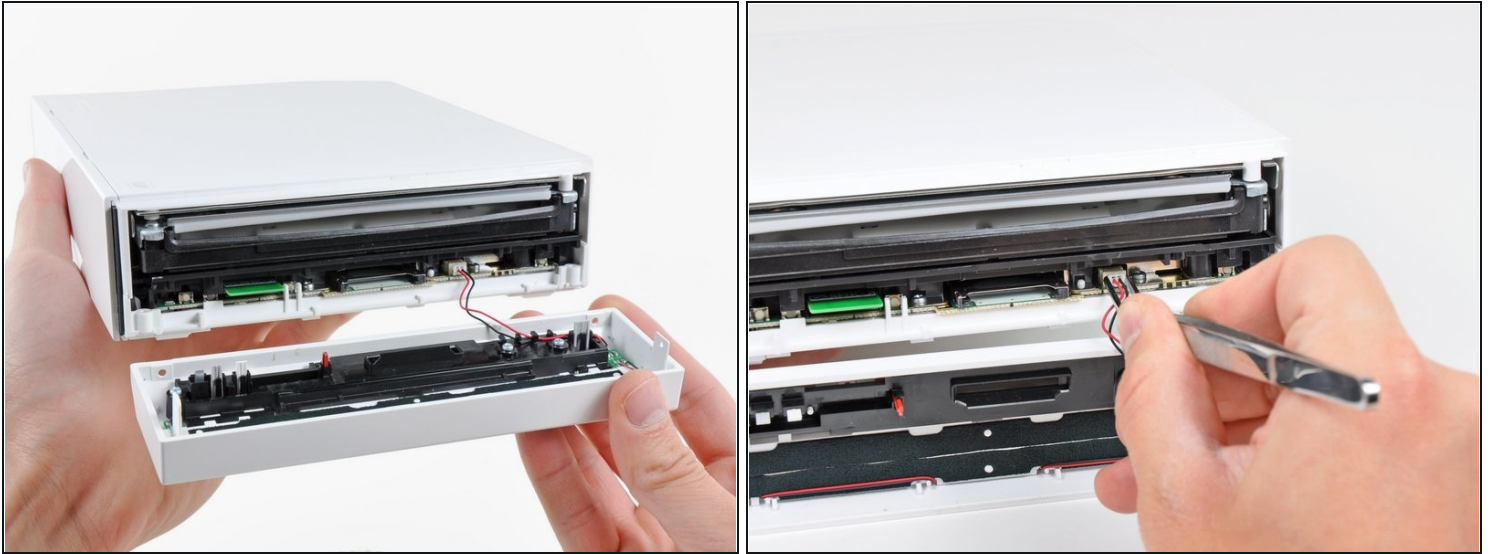
- Use a metal spudger to remove the rubber foot stuck to the side of the Wii near the DVD drive opening.

## Step 5



- Remove the single 5.9 mm Phillips screw hidden under the foot you just removed.

## Step 6



- Carefully pull the faceplate away from the front of the Wii.
- Use a pair of tweezers to disconnect the LED cable's plastic connector from the motherboard.
- Remove the faceplate.

## Step 7 — Outer Case



- Open the controller port cover until it is perpendicular to the black controller port bezel.
- Pull the controller port cover straight up to release it from the outer case.
- ① Repeat this procedure for the memory card port cover.



## Step 8



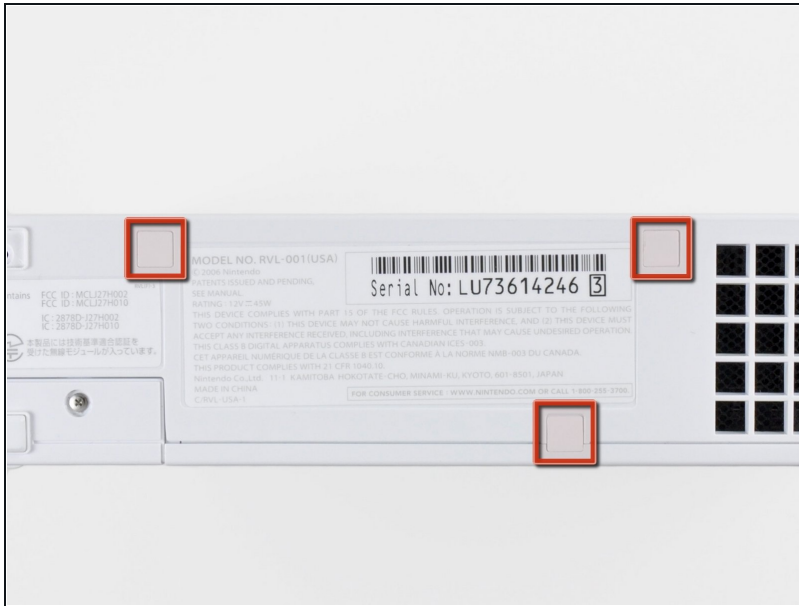
- Remove the two remaining 4.1 mm Phillips screws along the top edge of the black plastic controller port bezel.
- Lift the bezel from the long edge furthest away from the controller ports and remove it from the Wii.

## Step 9



- Remove the two 5 mm Phillips screws above the controller ports.

## Step 10



- Use a metal spudger to remove the three highlighted screw covers stuck to the side of the Wii.

## Step 11



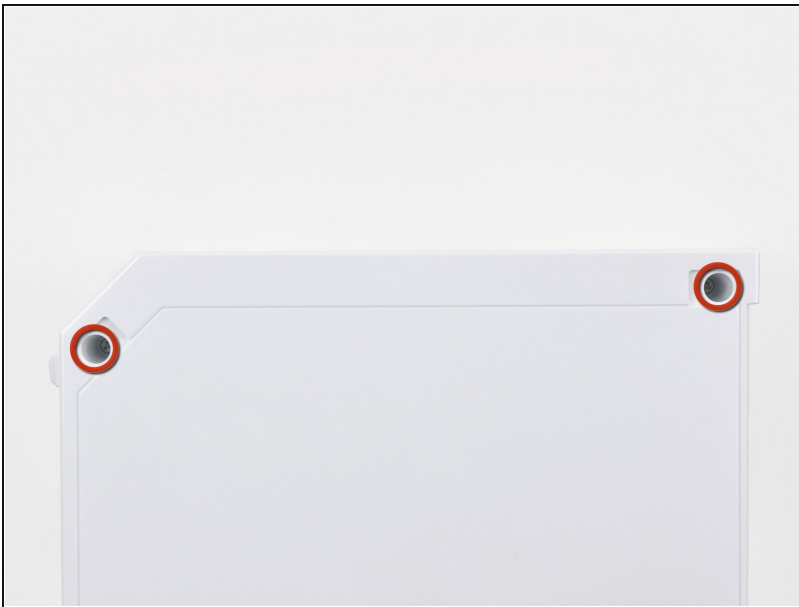
- Remove the following screws:
  - Two 5 mm Phillips screws
  - One 8.2 mm Tri-Point screw

## Step 12



- Use a metal spudger to remove the two rubber feet stuck to the bottom face of the Wii near the rear ports.

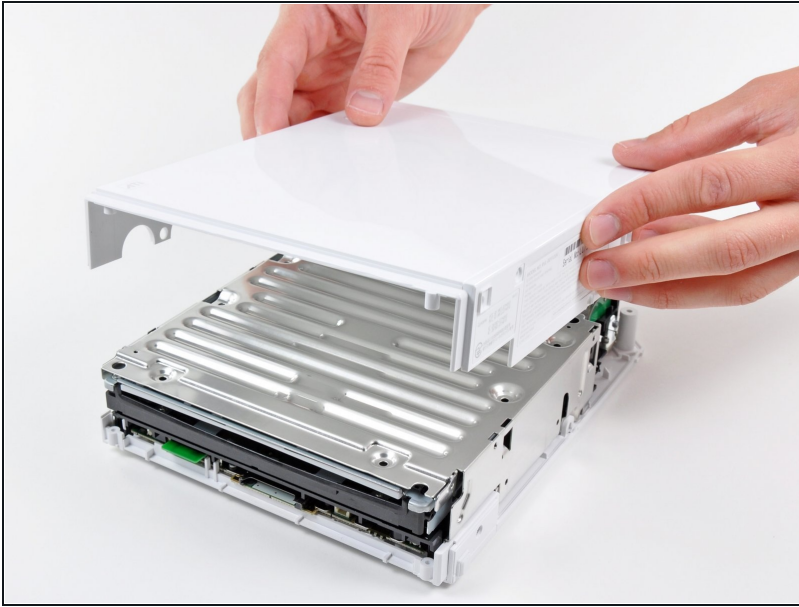
## Step 13



- Remove the two 8.2 mm Tri-Point screws hidden under the feet you just removed.
  - ① You may use a 4 mm hex driver to extend your bit into the recesses and reach the screws.

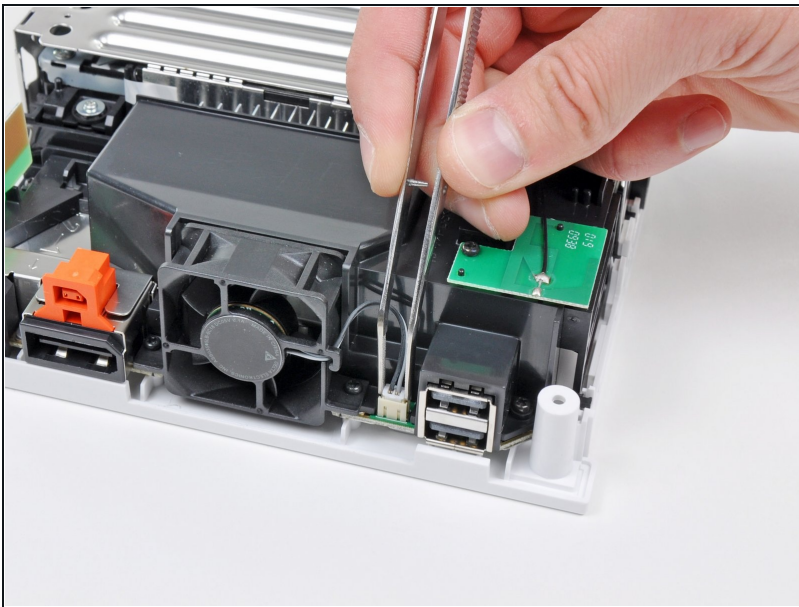


## Step 14



- Lift the outer case straight up off the body of the Wii.

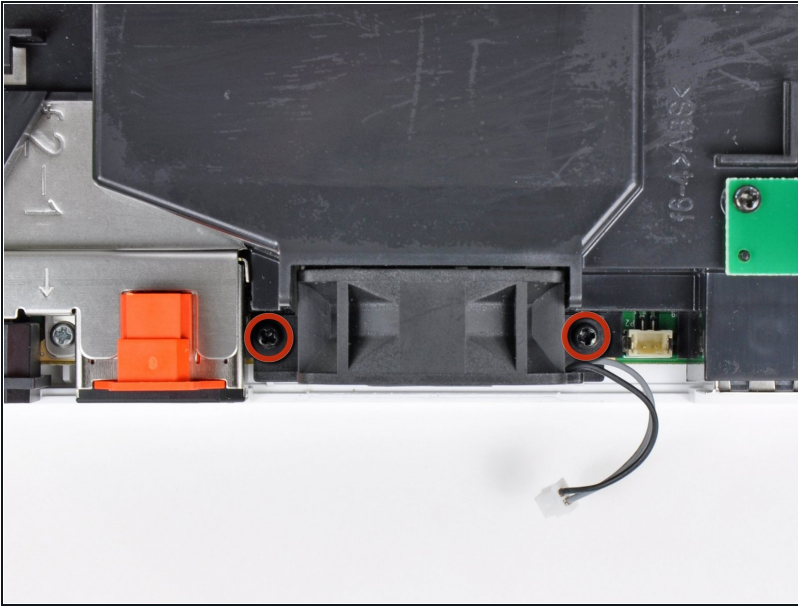
## Step 15 — Fan



- Grab the fan connector with a pair of tweezers and lift it straight up and out of its socket on the motherboard.

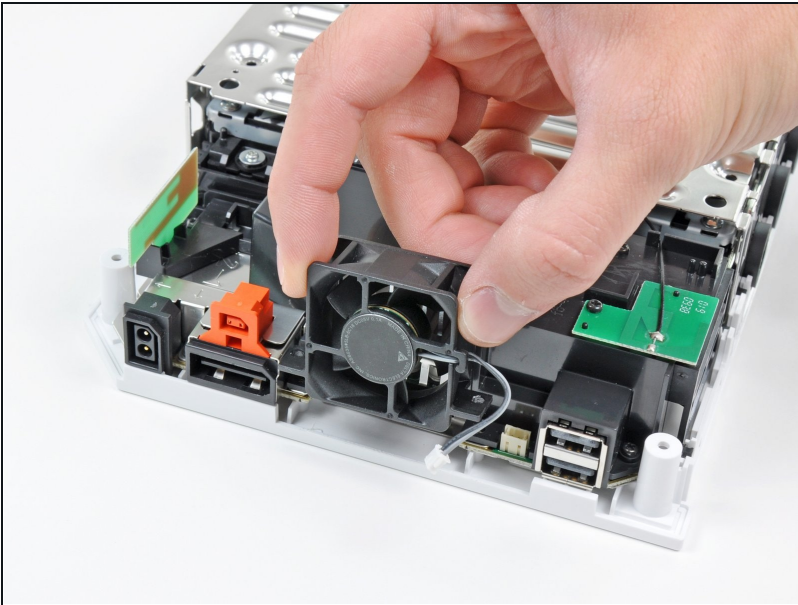
⚠ Be sure your tweezers are clamped down on the fan connector, **not** the socket attached to the motherboard.

## Step 16



- Remove the two 10 mm Phillips screws securing the fan to the fan shroud.

## Step 17



- Remove the fan from the Wii.

---

To reassemble your device, follow these instructions in reverse order.