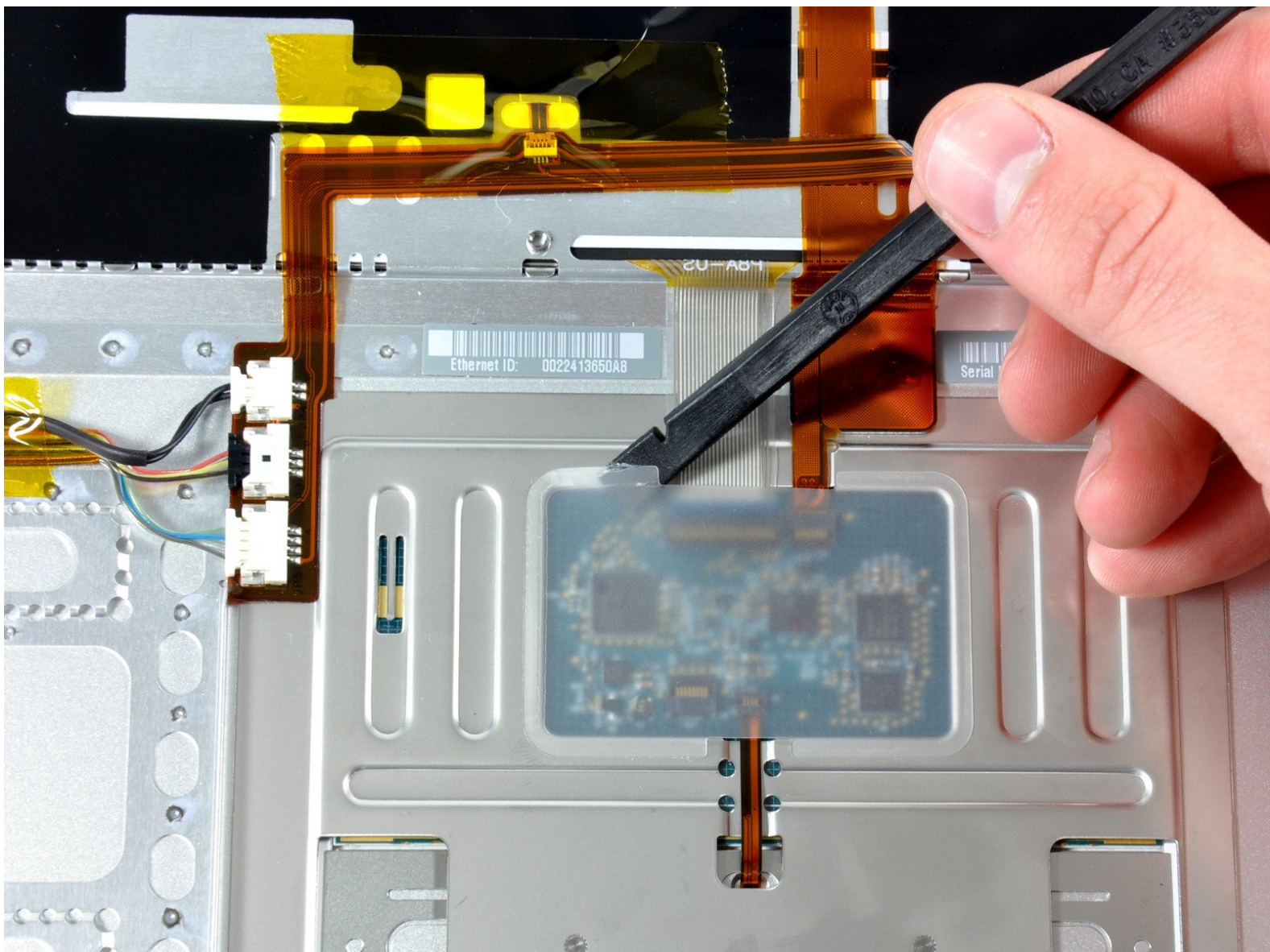




MacBook Pro 15" Core 2 Duo Models A1226 and A1260 Upper Case Cable Replacement

Replaces the cable that connects the upper case, power button, trackpad, sleep sensor, bluetooth board, and keyboard to the logic board.

Written By: Matt Barnes



INTRODUCTION

Replaces the cable that connects the upper case, power button, trackpad, sleep sensor, bluetooth board, and keyboard to the logic board.



TOOLS:

- [Phillips #00 Screwdriver](#) (1)
- [Spudger](#) (1)
- [T6 Torx Screwdriver](#) (1)



PARTS:

- [MacBook Pro 15" \(Model A1226\) Upper Case Cable](#) (1)

Step 1 — Battery



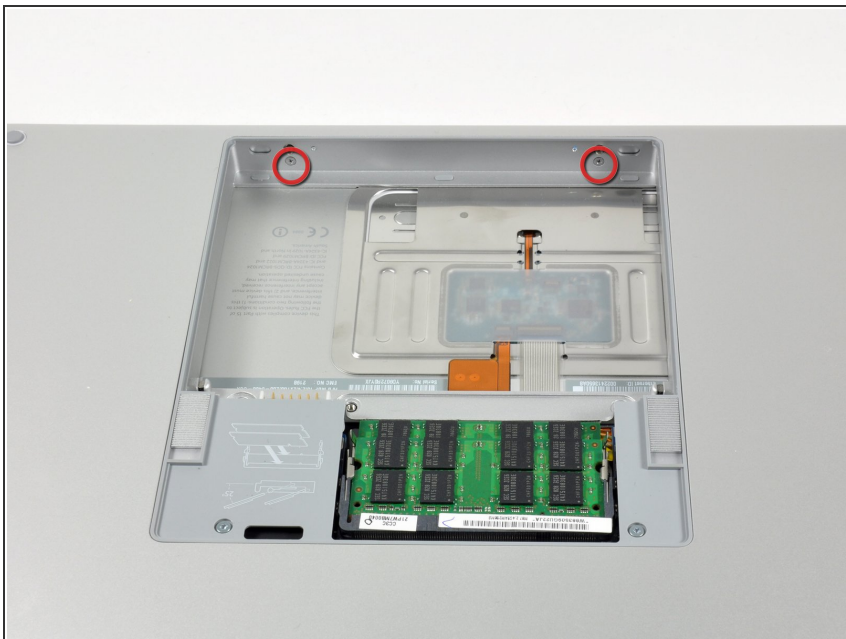
- Use your fingers to push both battery release tabs away from the battery, and lift the battery out of the computer.

Step 2 — RAM Shield



- Remove the three identical 2mm Phillips screws from the memory door.
- Lift the memory door up enough to grip it and slide it toward you, pulling it away from the casing.

Step 3 — Upper Case



- Remove the two 2.8 mm Phillips screws in the battery compartment near the latch.

Step 4



- Remove the following 6 screws:
 - Two 10 mm T6 Torx screws on either side of the RAM slot.
 - Four 14.5 mm Phillips screws along the hinge.

Step 5



- Remove the four 3.2 mm PH00 Phillips screws on the port side of the computer.

Step 6



- Rotate the computer 90 degrees and remove the two 3.2 mm Phillips screws from the rear of the computer.




Step 7



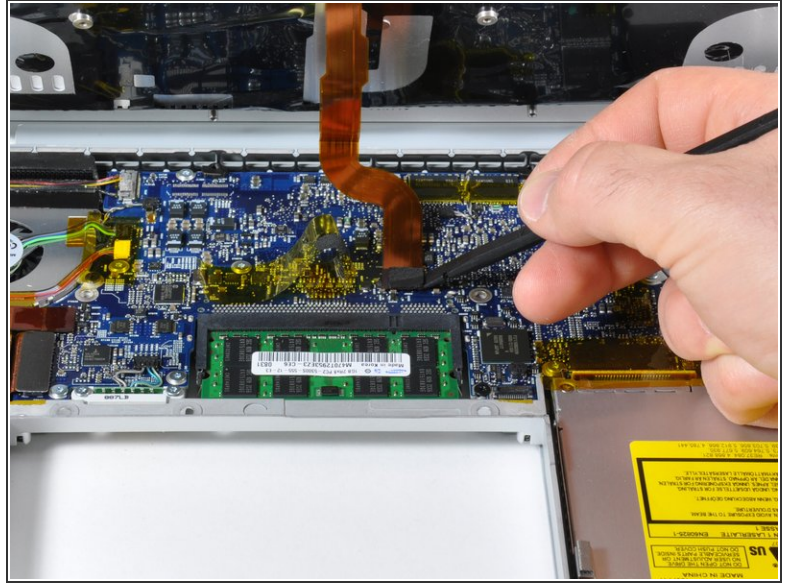
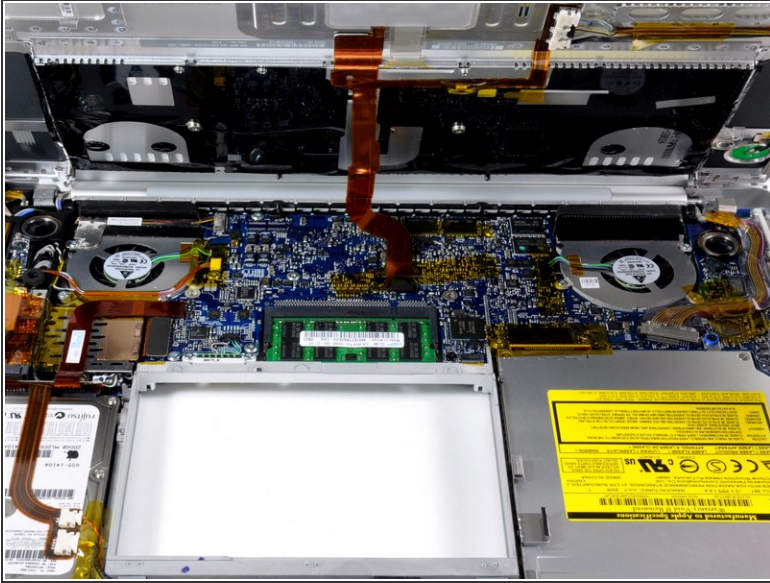
- Rotate the computer 90 degrees again and remove the four 3.2 mm Phillips screws from the side of the computer.

Step 8



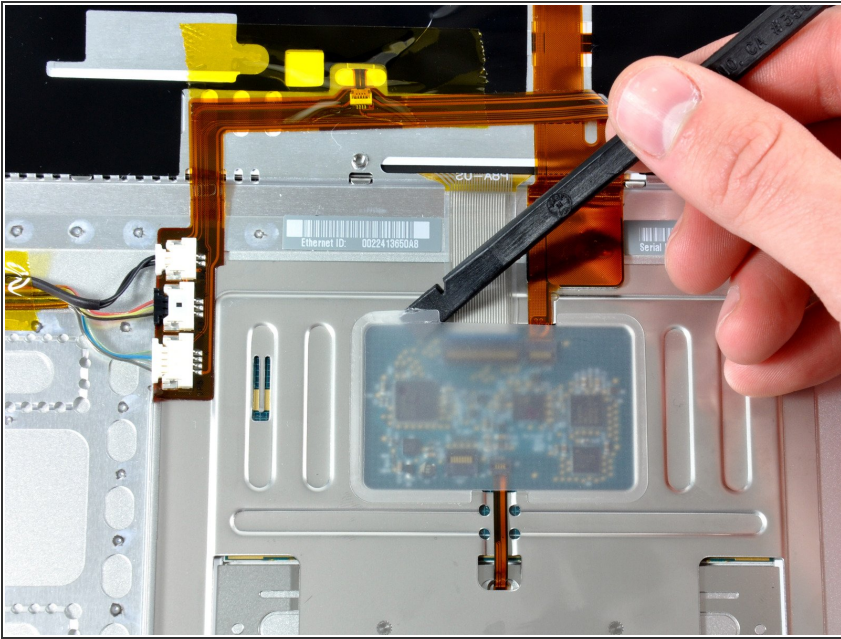
-  Do not yank the upper case off quickly. The case is attached to the logic board via a ribbon cable.
- Lift up at the rear of the case and work your fingers along the sides, freeing the case as you go. Once you have freed the sides, you may need to rock the case up and down to free the front of the upper case.
 - There are four plastic clips above the DVD slot, and another above and to the left of the IR sensor. These clips can be very difficult to disengage without prying. They can also be difficult to re-engage during reassembly.
-  **Reassembly Tip:** Press down firmly on the tip of the top case above the location of each clip until you hear a *snap* to reseat them in their slots.
-  **Reassembly Tip:** The two center DVD clips will rarely snap back into place properly without help, and downward pressure will instead simply deform the frame around the DVD slot. Support the frame by inserting a plastic spudger into the DVD slot directly under the clip location until it is snug, then press down until you hear the *snap*.

Step 9



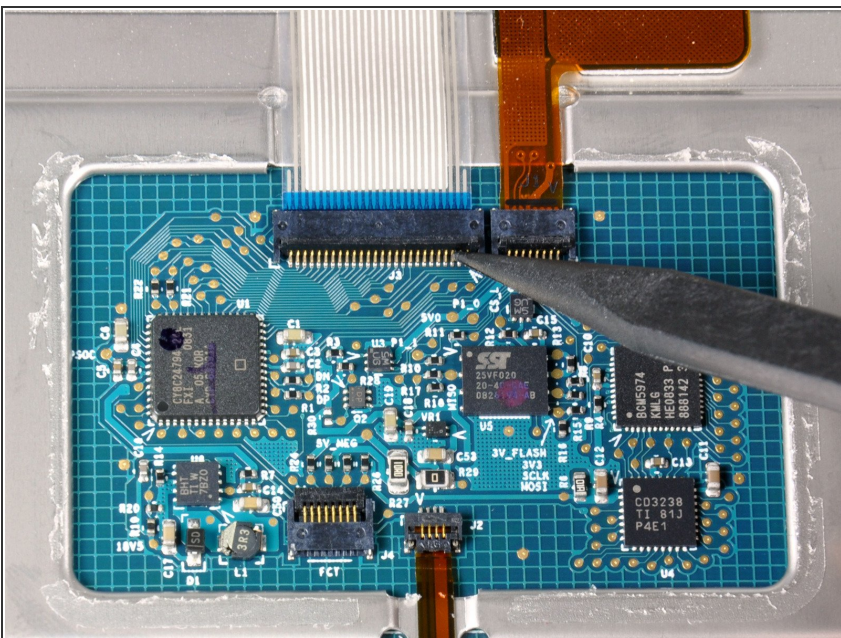
- Disconnect the trackpad and keyboard ribbon cable from the logic board, removing tape as necessary.
- ⓘ Note: It is possible to replace the hard drive without disconnecting the keyboard from the chassis, but it will need to be held upright to keep it out of the way, while still allowing you both hands to work on the drive removal.
- ⓘ Be careful when removing the keyboard-trackpad ribbon cable to ensure that the rear of the upper case is disengaged from the area near the hinge. It is easy to accidentally bend the screw receivers on either side of the keyboard.
- Remove the upper case.

Step 10 — Upper Case Cable



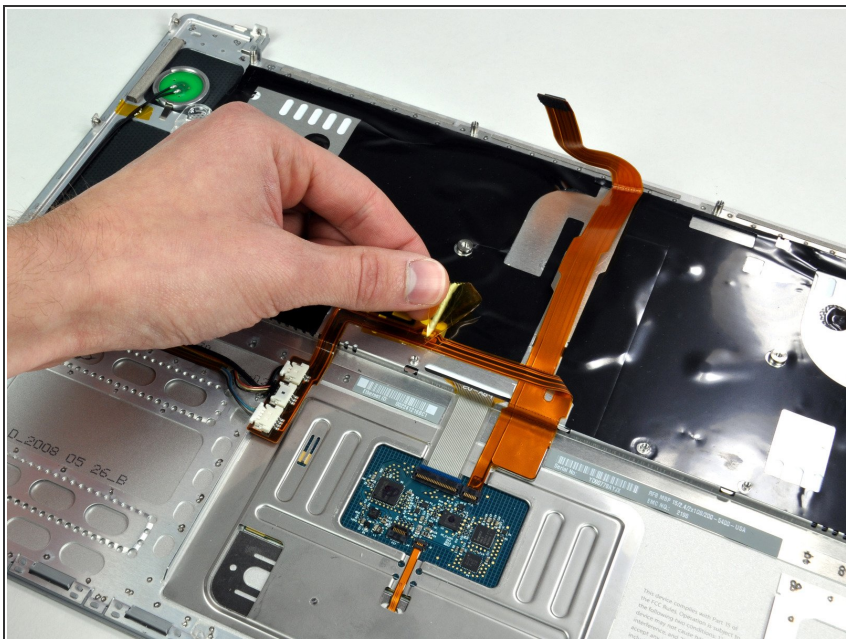
- Use a spudger to pry up the translucent plastic sheet covering the keyboard connector. You can just peel up the three sides closest to the upper flex cable entering the keyboard connector to make it easier to reassemble it.

Step 11



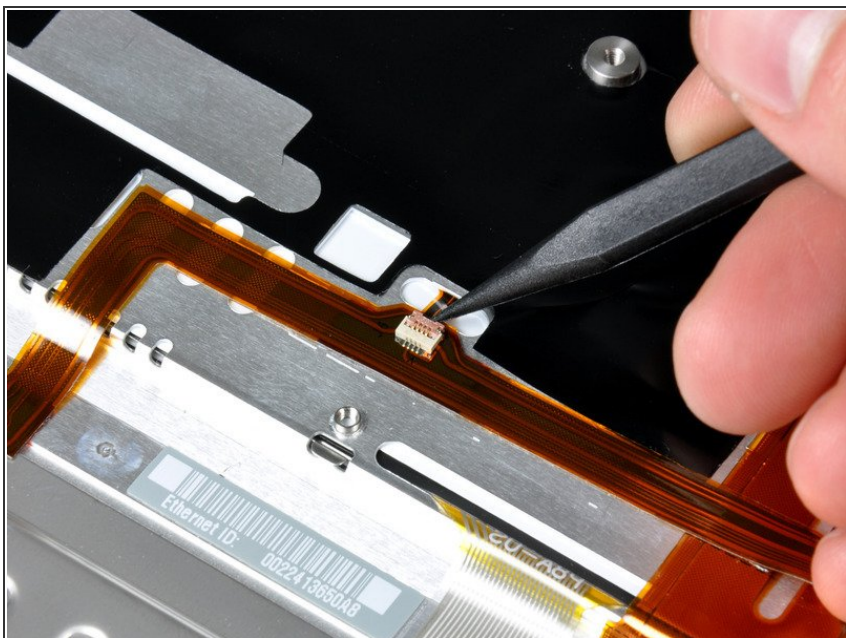
- Use the tip of a spudger to flip up the black plastic flap locking down the orange upper case ribbon cable. Similar to the other locking flaps it is located on the opposite side of where the cable enters the connection.

Step 12



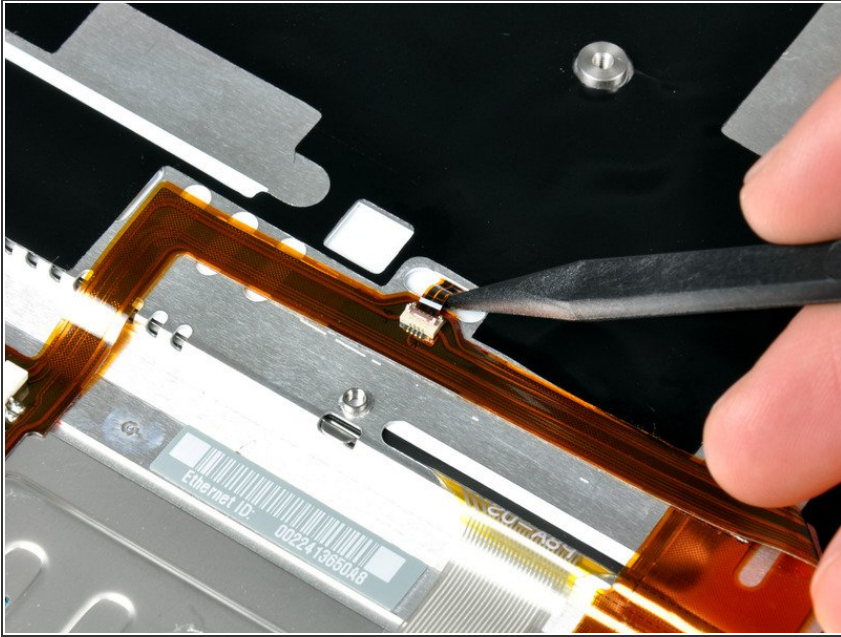
- Peel up the orange tape covering the keyboard backlight connector.

Step 13



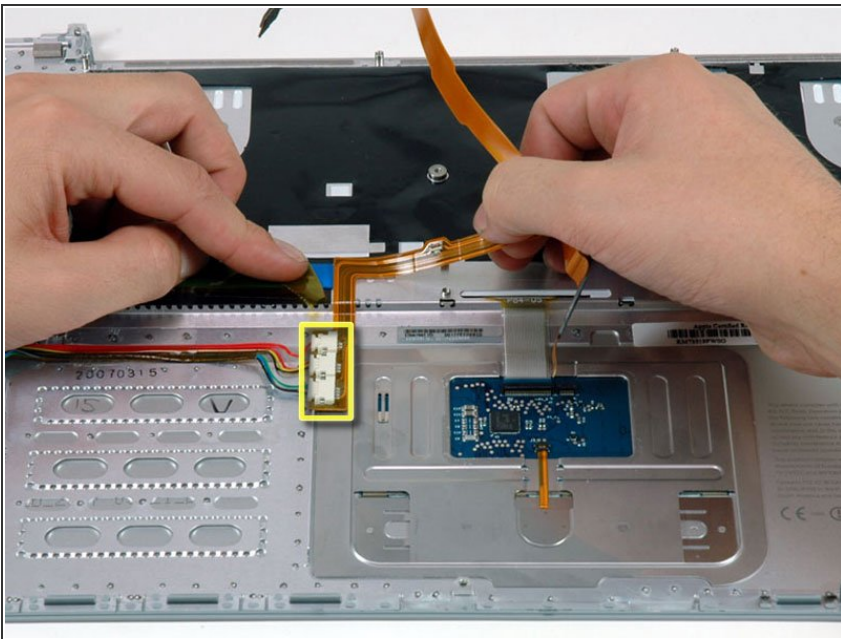
- Use the tip of a spudger to flip up the brown plastic flap locking down the keyboard backlight ribbon cable.

Step 14



- Use a spudger or your finger to slide the keyboard backlight ribbon out of its connector.

Step 15



- Disconnect the power button cable, the bluetooth cable, and the sleep sensor cable.
- Carefully peel up the orange ribbon cable removing tape as necessary.

To reassemble your device, follow these instructions in reverse order.