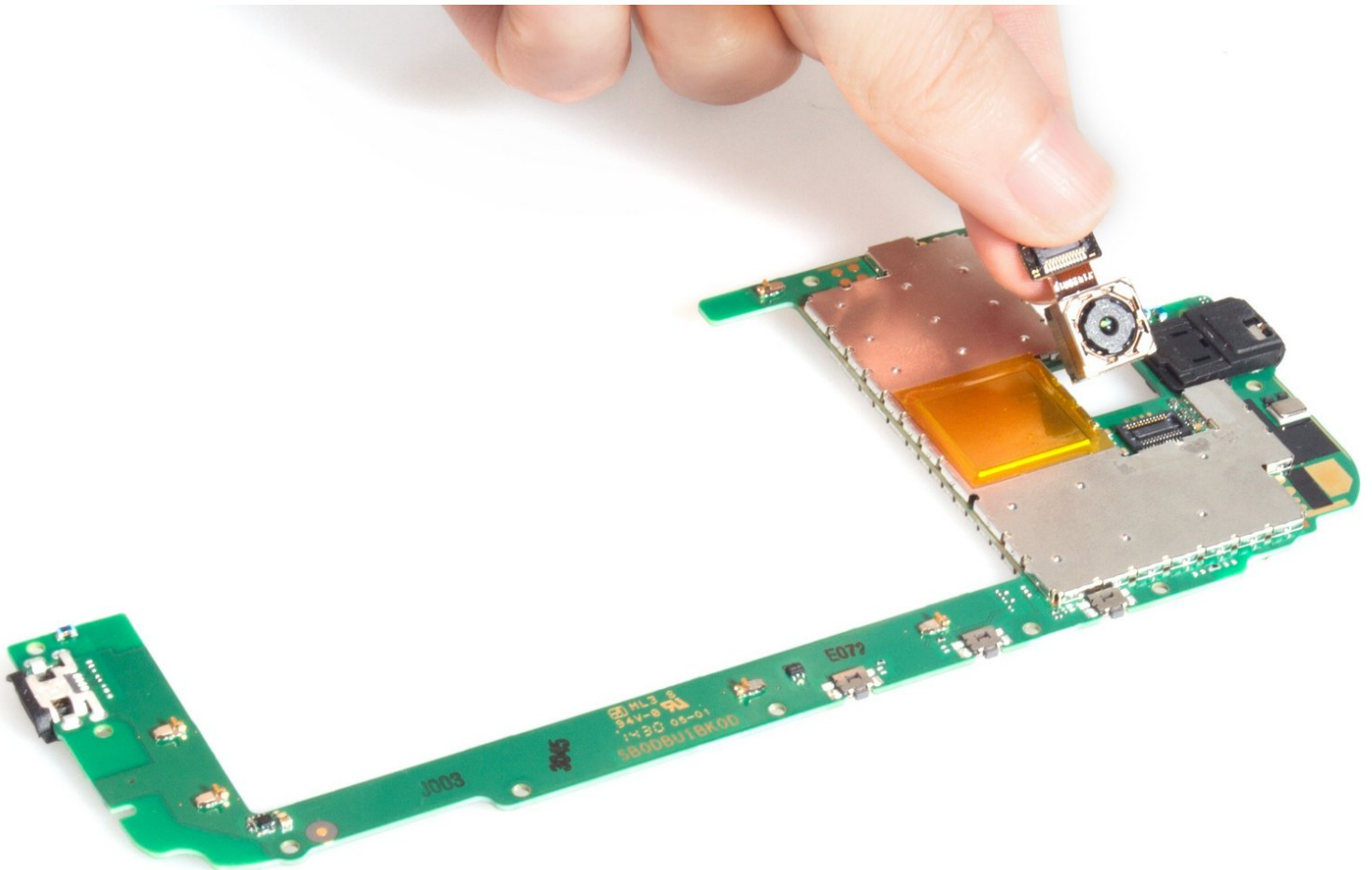




Motorola Moto G 2nd Generation Rear Camera Replacement

Motorola Moto G 2nd Generation Rear Camera Replacement.

Written By: Sophia



INTRODUCTION

This guide shows you how to replace the rear camera in a Motorola Moto G 2nd Generation smartphone.



TOOLS:

- [T5 Torx Screwdriver](#) (1)
 - [Spudger](#) (1)
-

Step 1 — Rear Camera



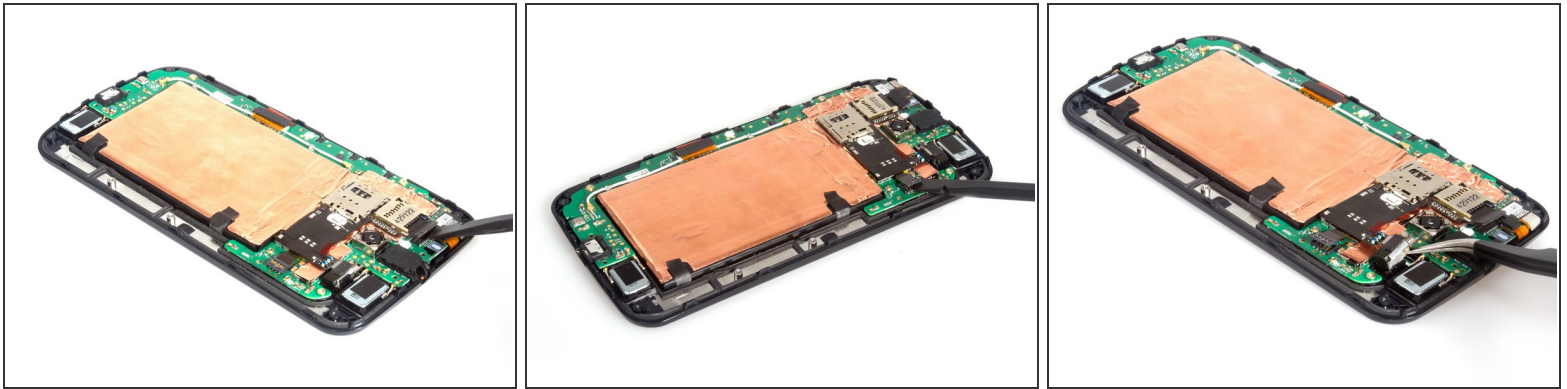
- Remove back cover.

Step 2



- Remove back frame. The screws feature different sizes and lengths, so keep them in order after removing them.

Step 3



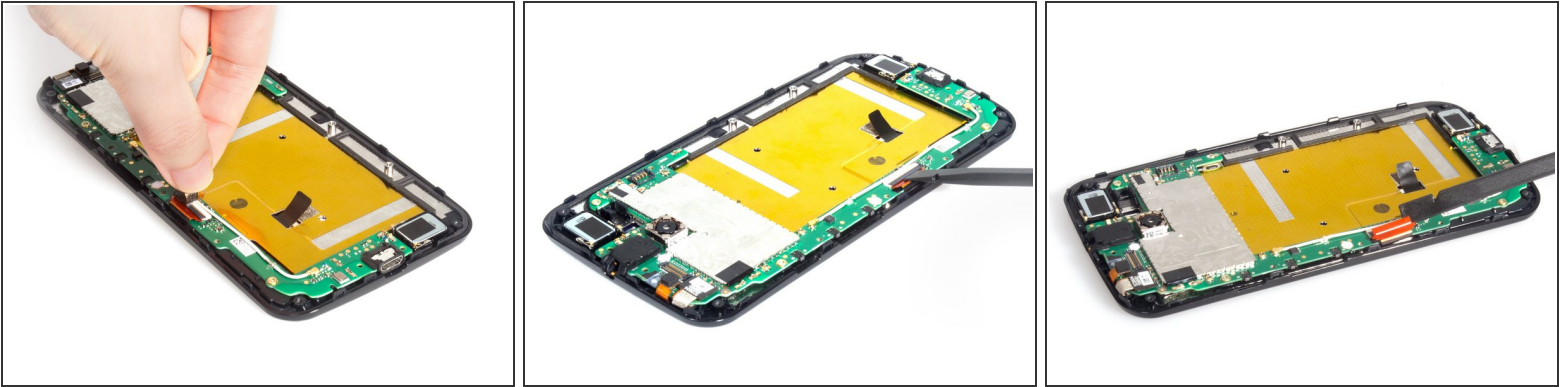
- Release SIM&SD card reader assembly connector, battery connector and vibrator at first.

Step 4



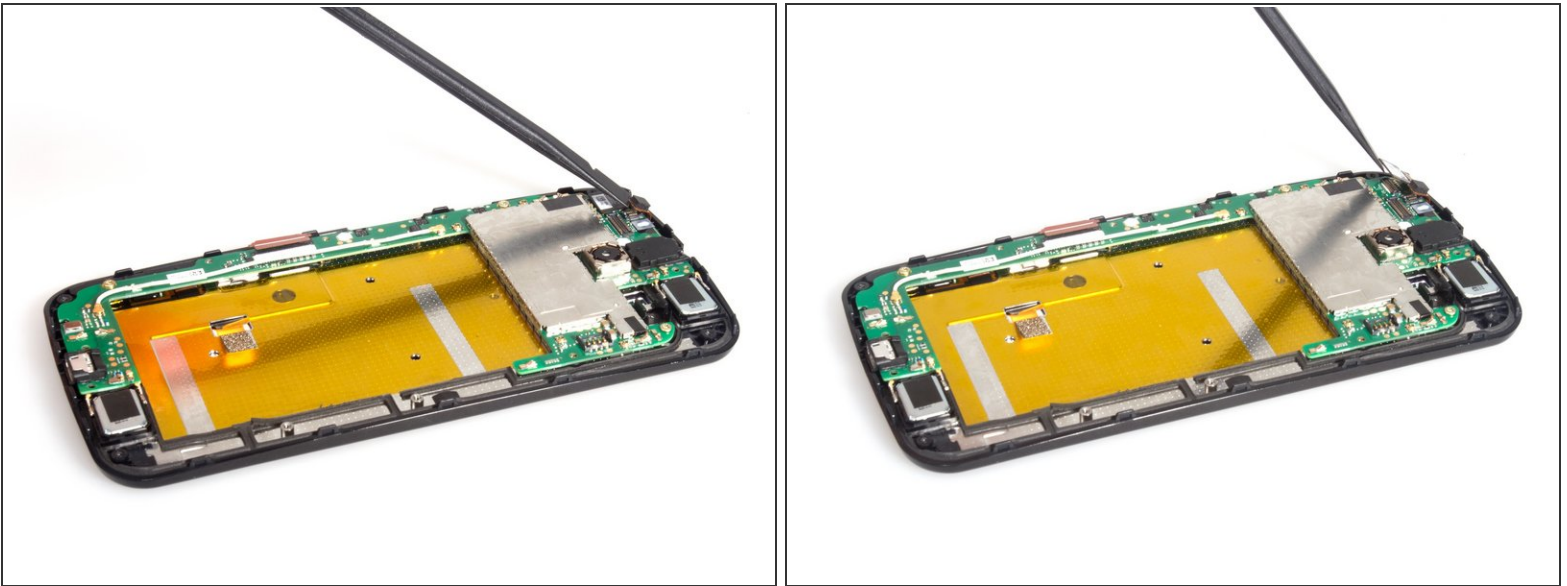
- Loosen kinds of sticker under the battery and remove it with card reader assembly together.

Step 5



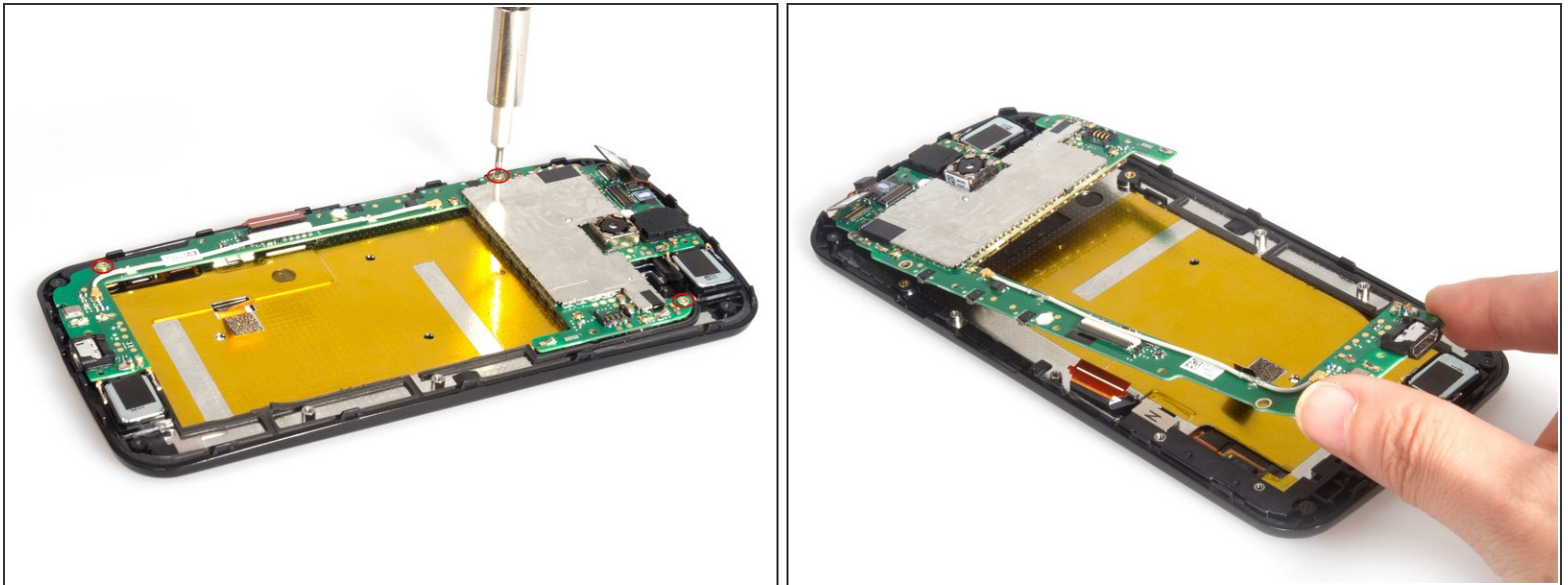
- Release LCD screen connector.

Step 6



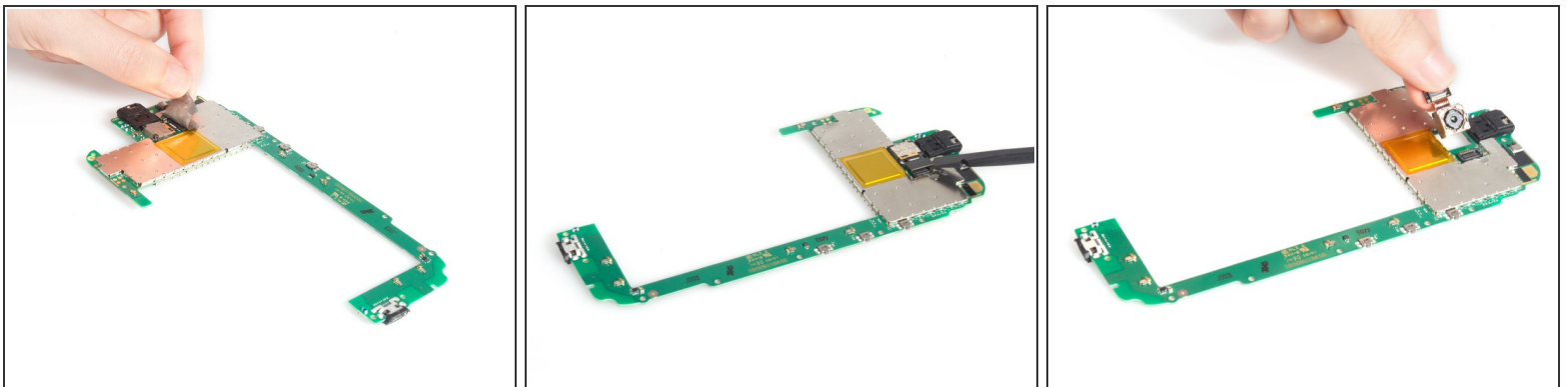
- Release front camera connector and sensor connector.

Step 7



- Remove three screws on the motherboard and take away the motherboard.

Step 8



- Remove the rear camera from motherboard.

To reassemble your device, follow these instructions in reverse order.