



Sony Cyber-shot DSC-W290 casing Replacement

Knowledge of how to remove the outer casing is...

Written By: Evan Mayer



INTRODUCTION

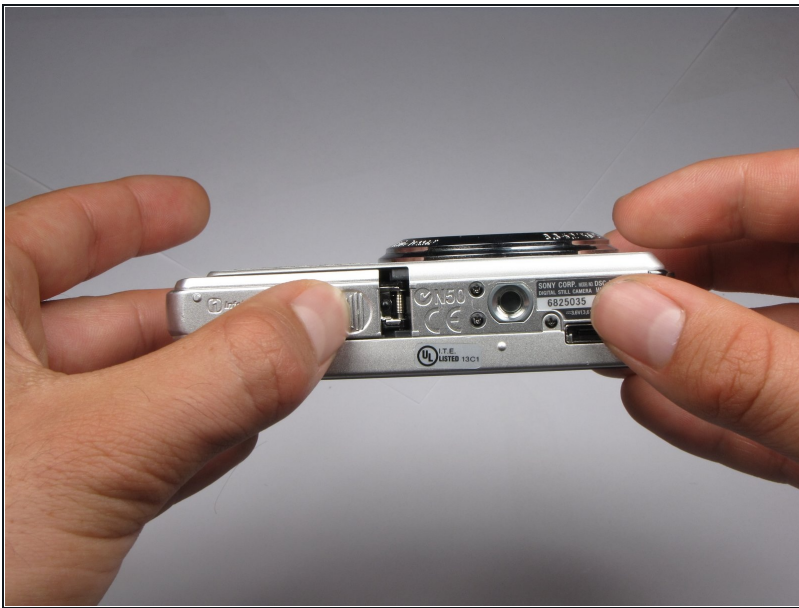
Knowledge of how to remove the outer casing is necessary to replace it. (See guide)

TOOLS:

Phillips #0 Screwdriver (1)

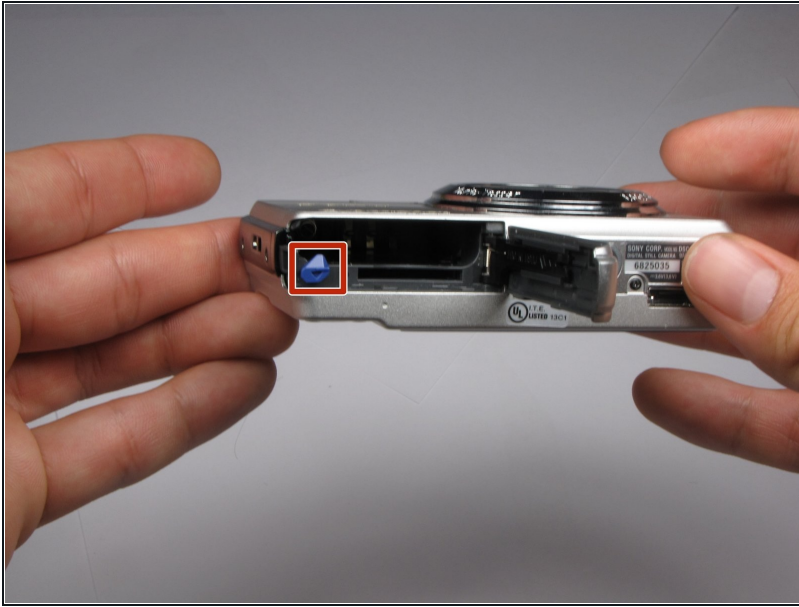
Tweezers (1)

Step 1 — Battery



- Find the hatch labeled "open" on the left side of the bottom of the camera.
- Slide the hatch in the direction that the arrow is pointing. The hatch will open outward on its own.

Step 2



- Slide the blue locking tab to release the battery.
- Slide the battery out of the camera.

Step 3 — Outer Casing



- Replace hatch and rotate camera 180 degrees. You should still be looking at the bottom of the camera.
- Remove the four 2.5mm Phillips #0 screws.

Step 4



- Turn the camera so the left side-panel reading "5x Optical Zoom" faces you.
- Remove the two 2.5mm Phillips #0 screws.
- ① You may have to remove the screws with a pair of [tweezers](#) when the screws are almost out.

Step 5



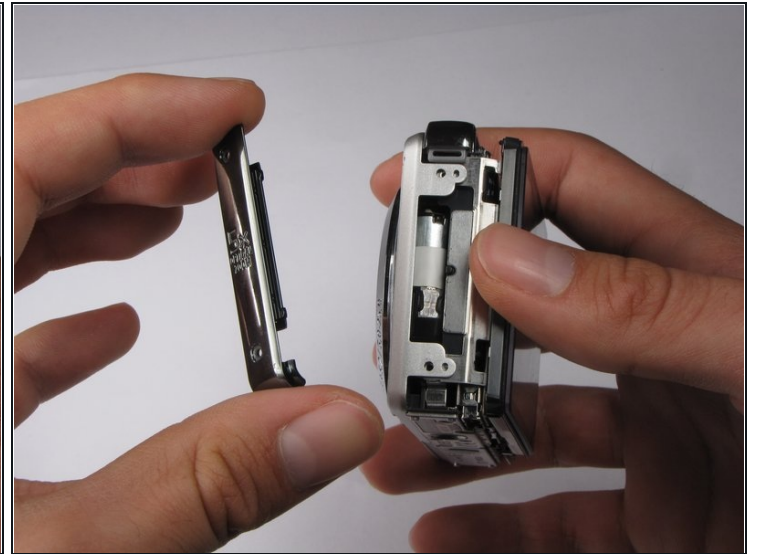
- Turn the camera so the right side faces you.
- Remove the two 2.5mm Phillips #0 screws.
- ① You may have to remove the screws with a pair of tweezers when the screws are almost out.

Step 6



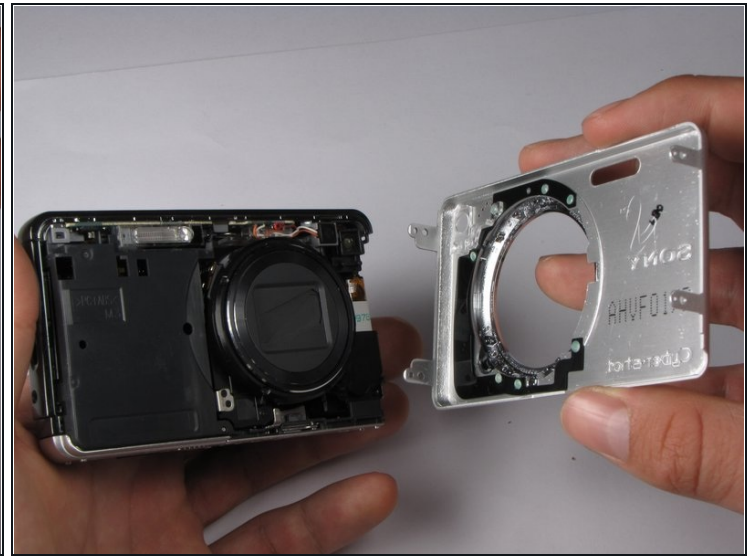
- Rotate camera so that the back is facing you.
- Pull the back casing directly away from the LCD screen.

Step 7



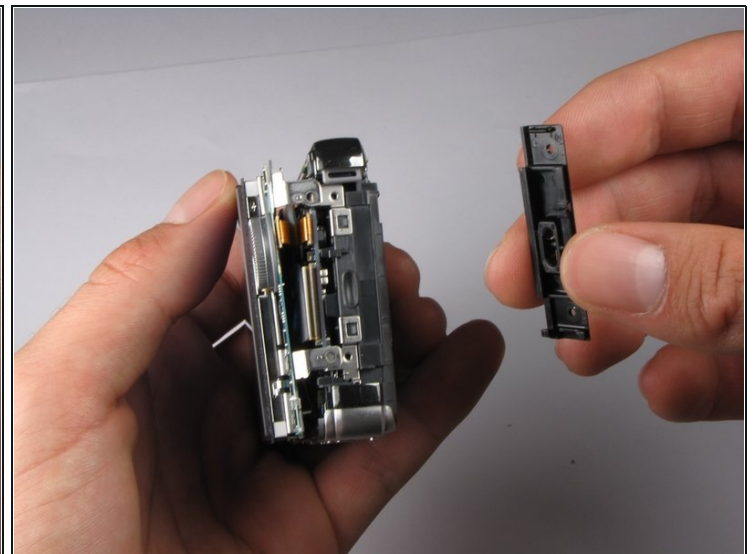
- Turn the camera so that the left side is facing you.
- Pull the left side-panel off of the camera.

Step 8



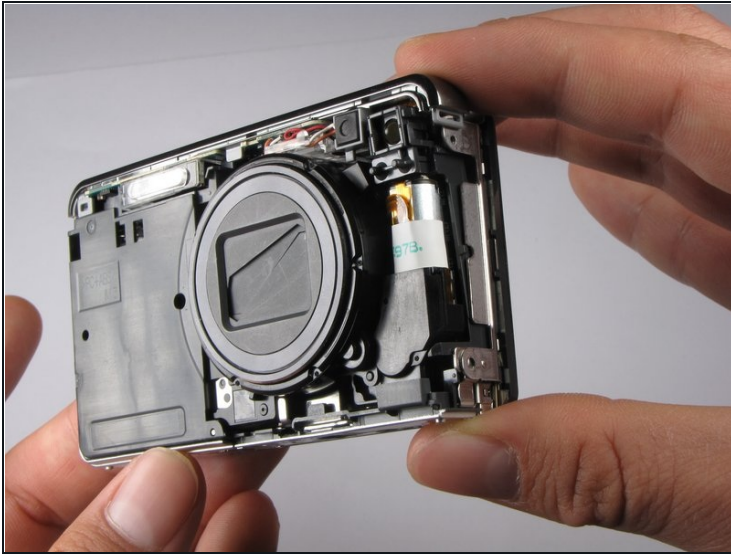
- Turn camera so that the front of the camera is facing you.
- Pull the front casing directly away from the camera.
- ① The right side panel may fall off when you take the front panel off.

Step 9



- Turn the camera so that the right side is facing you.
- Pull the right side-panel away from the rest of the camera.

Step 10



- This is what your camera should look like now that you have removed the casing from all sides.

To reassemble your device, follow these instructions in reverse order.