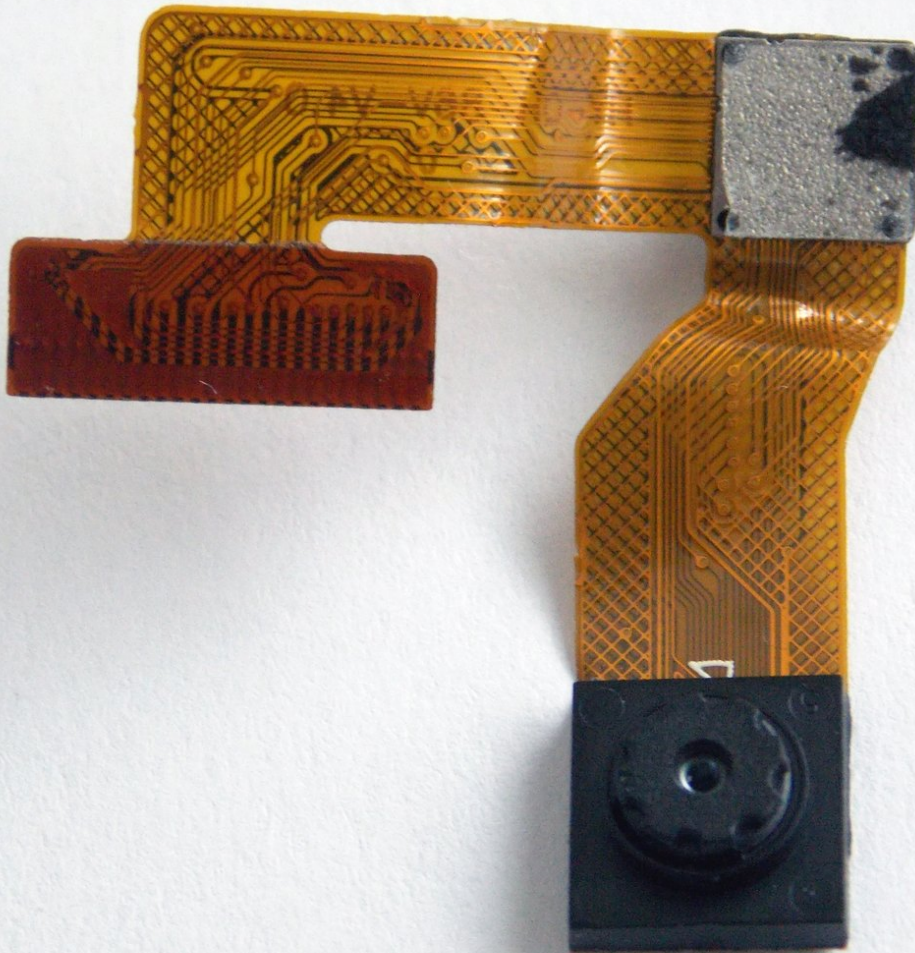




Nobis NB07 Cameras Replacement

Use this guide to replace the cameras of your Nobis NB07 tablet.

Written By: Daniel Gomero



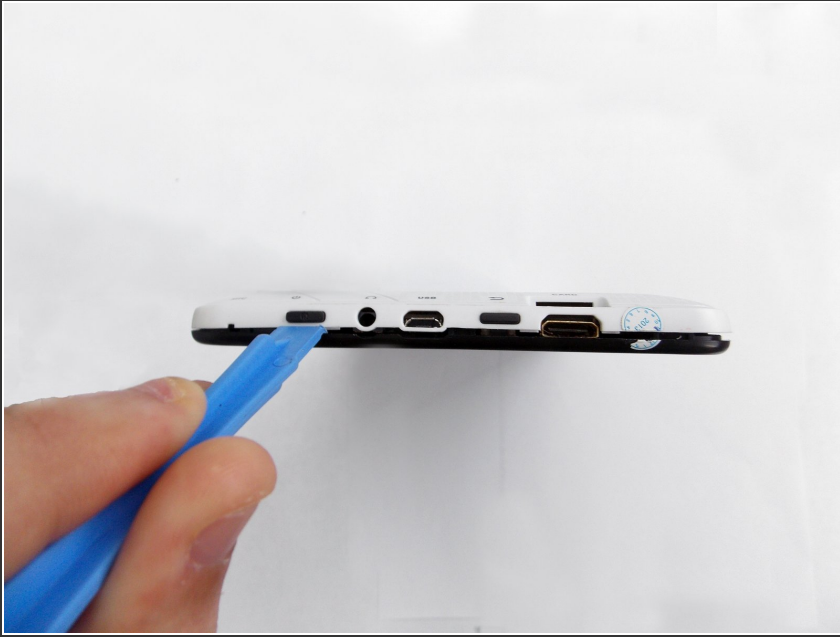
INTRODUCTION

Is one or both of your tablet's cameras broken? You can use this guide to replace it. Following these steps, you will disassemble your tablet and replace the faulty camera.

TOOLS:

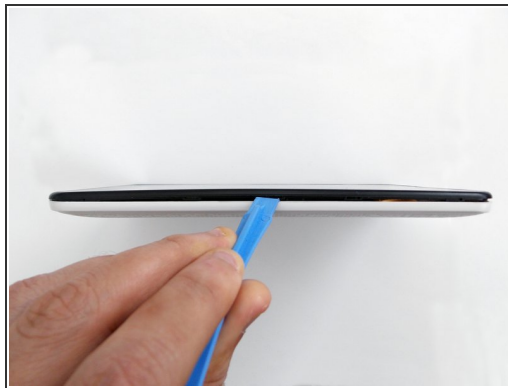
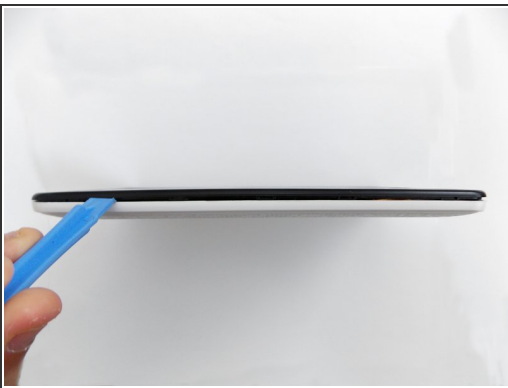
- [Tweezers](#) (1)
 - [Electrical Tape in 6 Assorted Colors](#) (1)
 - [iFixit Opening Tools](#) (1)
 - [Soldering Workstation](#) (1)
 - [Spudger](#) (1)
 - [Low Adhesive Glue](#) (1)
-

Step 1 — Opening the case



- Look towards the topside of the tablet, where the power button is located.
- Insert a plastic opening tool in the crack between the two parts of the case.
- Move it gently back and forth to open the case.

Step 2



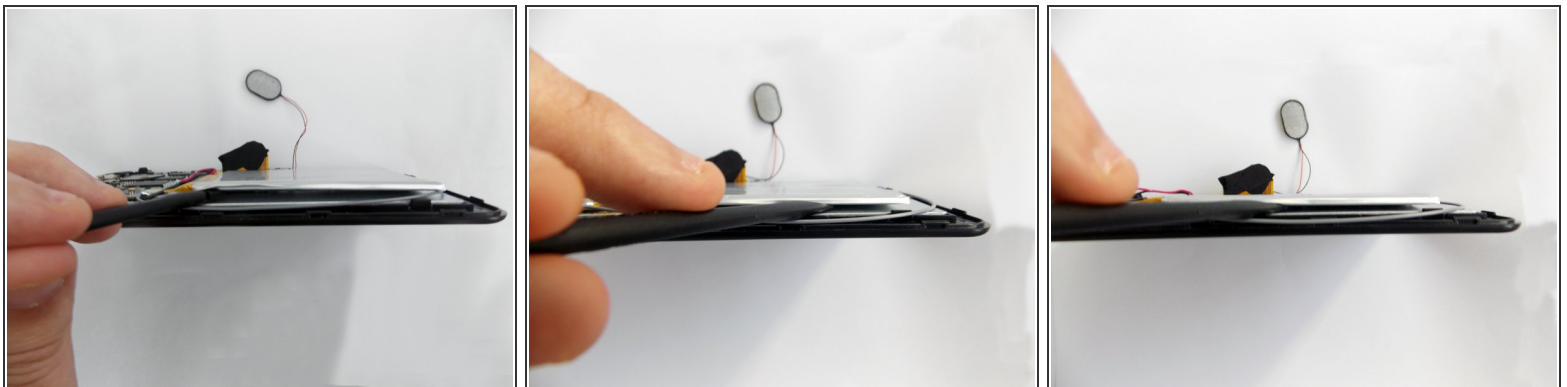
- With the plastic opening tool in the opening between the two sides of the case, slide the tool along the tablet's border to separate the two sides completely.
- ⚠ Be careful when you separate the two halves. Open the case from the opposite side of the camera, there is a cable connecting both halves of the case.

Step 3 — Replacing the battery



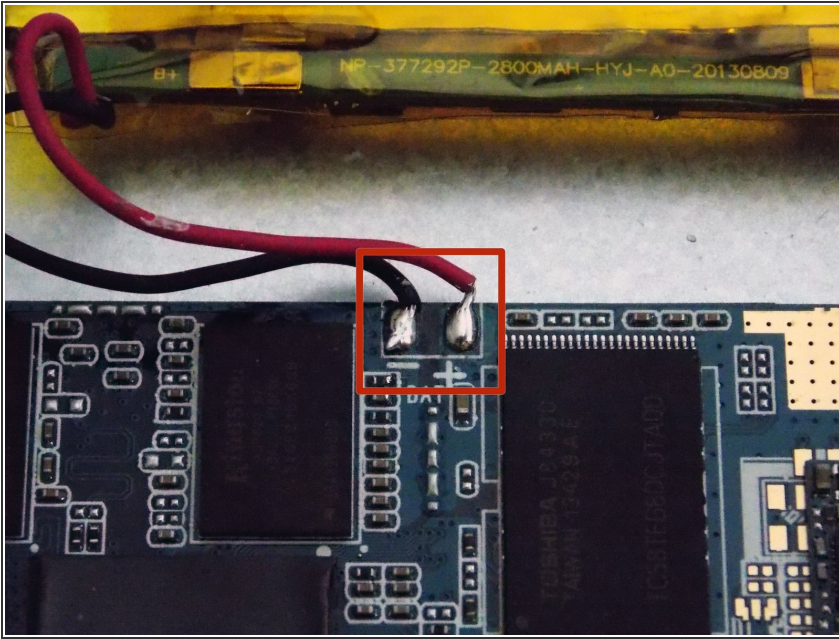
- Remove the tape holding the battery in place.

Step 4



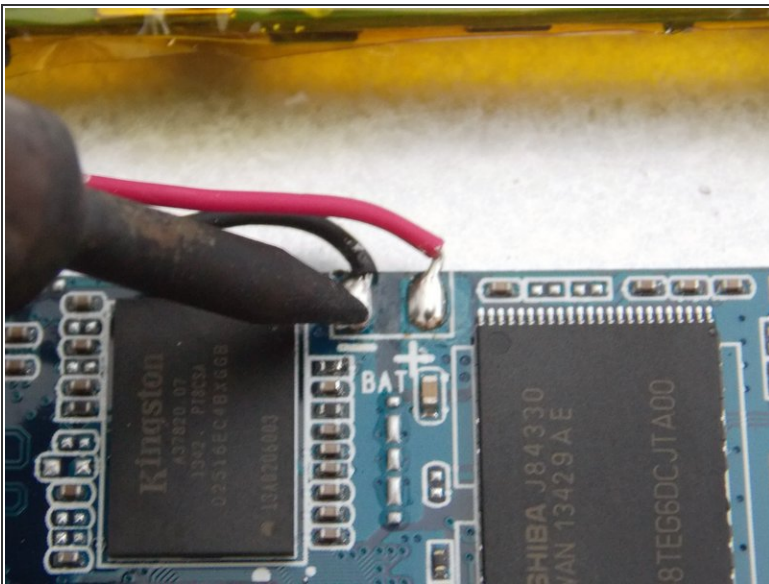
- Insert the flat end of the spudger tool in the crack beneath the battery.
 - Move the spudger tool carefully side to side to remove the glue that is holding the battery in place.
- i** This is a soft battery, so a little bending is expected.

Step 5



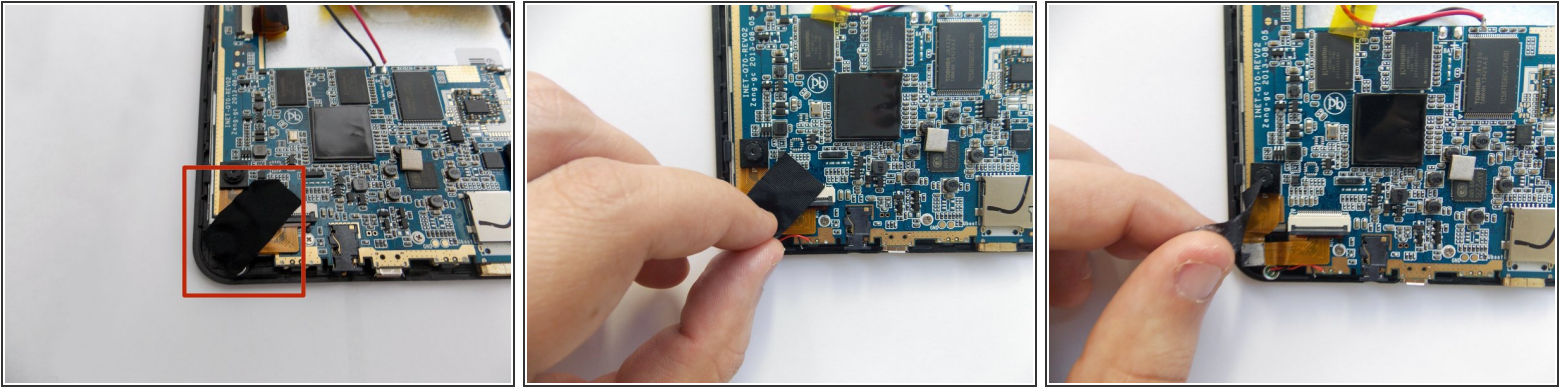
- After the battery is unglued, locate the cables that connect it to the motherboard.
- ⓘ Annotate where each color goes to make the reassembly easier.

Step 6



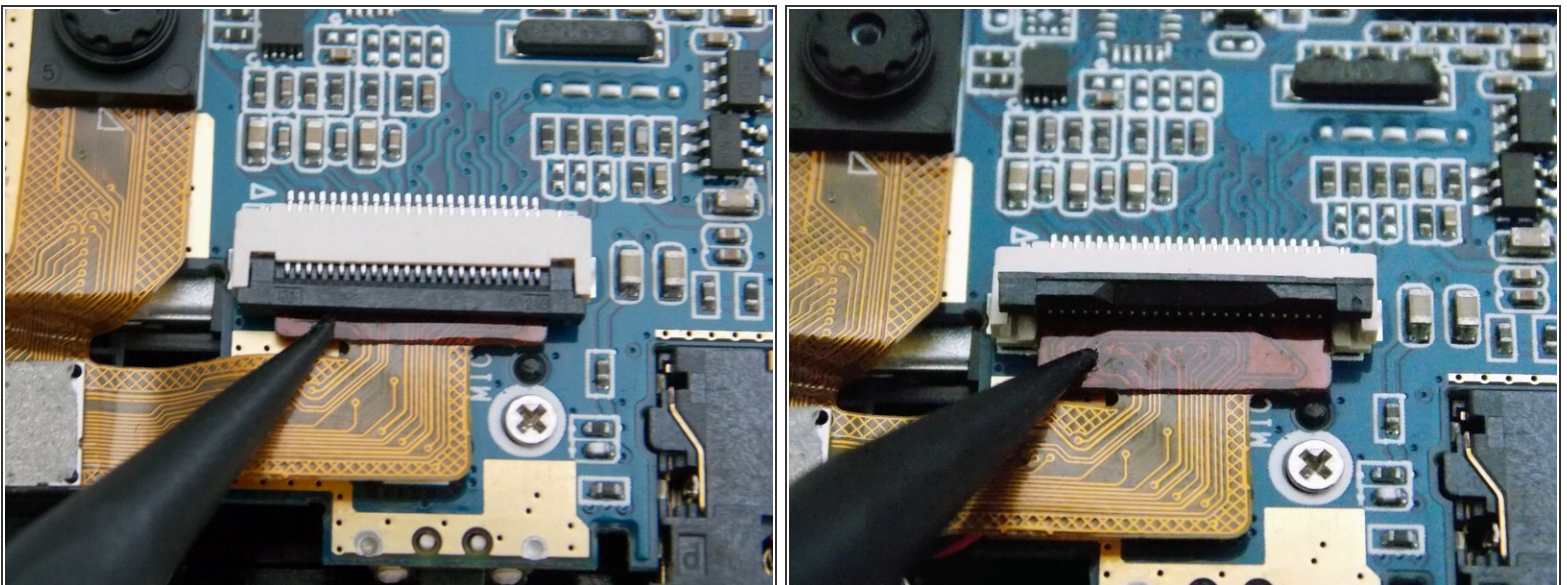
- Desolder the cables with a soldering iron and use a desoldering braid to remove the solder.
- ⓘ Review the [ifixit soldering guide](#) if you need help soldering.
- ★ You can now remove the battery.

Step 7 — Removing the cameras



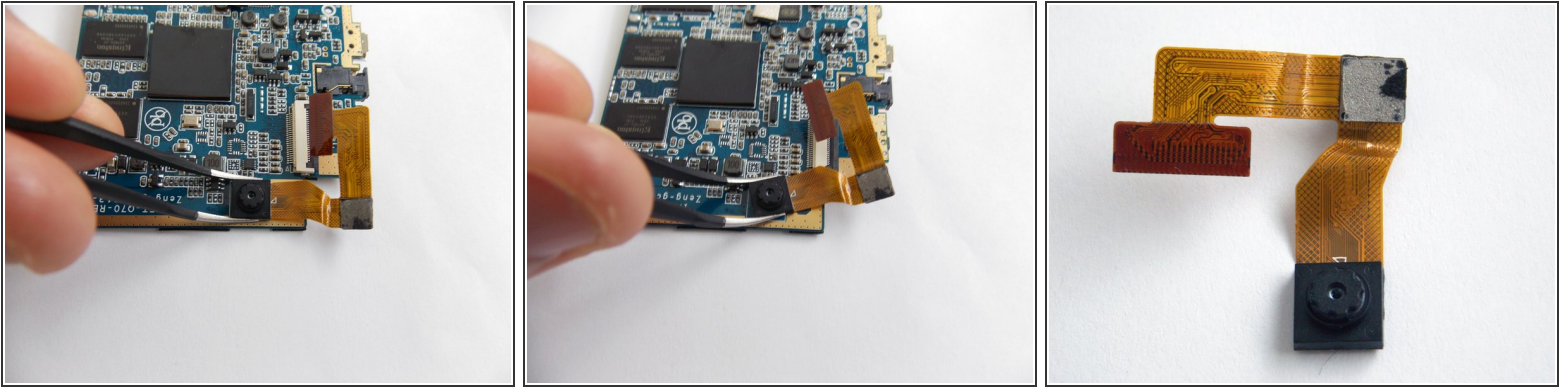
- Remove the black tape covering the cameras power cable.


Step 8




- Use the spudger tool to pry upwards the ZIF connector and release the power cable.

Step 9



 With the power cable disconnected, the backside camera is free. However, both cameras are sequentially connected through the power cable; the front side camera is glued to the motherboard.

- Using tweezers, carefully grab the front camera and twist slowly.

 The camera should release easily, do not twist too hard.

 You can now remove the cameras.

To reassemble your device, follow these instructions in reverse order.