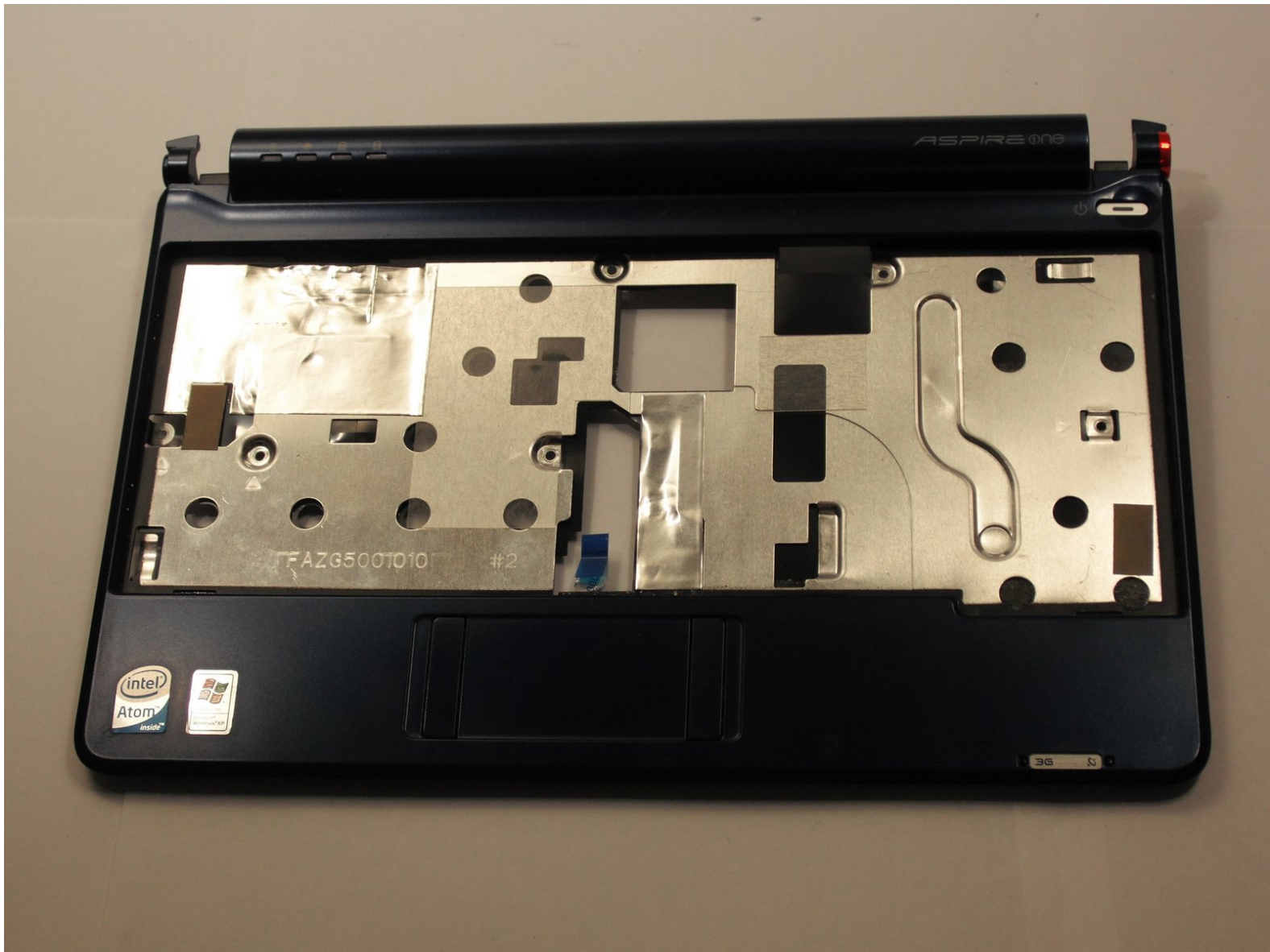




Acer Aspire One ZG5 Top Case Replacement

This guide show you how to install another top case.

Written By: Doug Gallatin



INTRODUCTION

There are screws and several cables that need to be removed before the top case will come off. The battery and the keyboard both need to be removed as well.



TOOLS:

- [Phillips #0 Screwdriver](#) (1)
 - [Spudger](#) (1)
-

Step 1 — Battery



- Turn the netbook upside down with the battery at the top, facing away from you.

Step 2



- Unlock the battery by sliding the switch located near the left hinge to the left "unlocked" position.

Step 3



- Slide the latch located on the opposite hinge from the lock while pushing the battery up.

Step 4 — Wireless Card



- Gently loosen the two Phillips #0 screws in the small panel that covers the wireless card.
- ⓘ These screws are built into the panel and aren't meant to be completely removed.

Step 5



- Lift up the panel and remove it from the case.

Step 6



- Disconnect the two antenna cables from the left side of the wireless card.

Step 7



- Remove the single 3.9 mm Phillips #1 screw from the bottom left of the wireless card.

Step 8



- Gently lift up the left side of the wireless card and slide the card out of its socket.

Step 9 — Keyboard



- Turn the netbook over and open the display so that the keyboard is facing you.

Step 10



- There are three tabs located on the top of the keyboard.
- Start with the spudger pointing towards the display and pry up to push each tab off the keyboard.
- As you move to the next tab, ensure the previous tab doesn't reset itself.

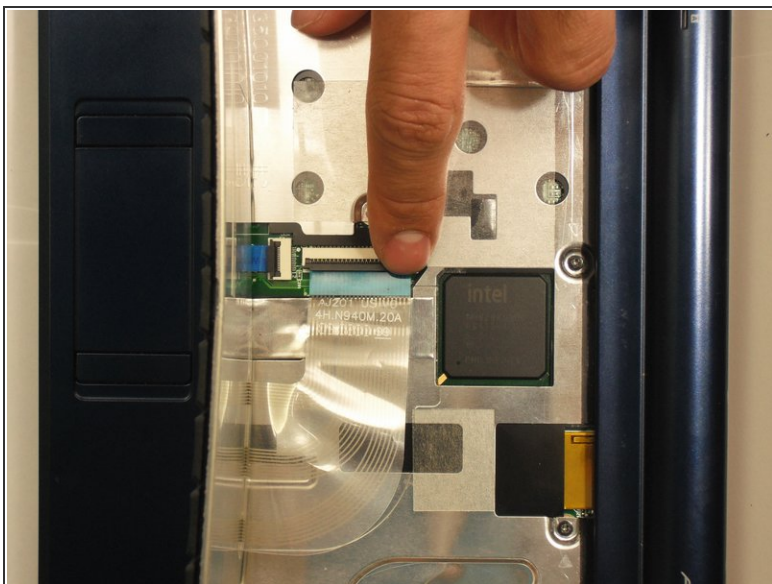
Step 11



- Lift top of keyboard up. If it doesn't lift easily, there may be tabs on the sides - use the tool to ease them aside and/or shift the keyboard from side to side.

⚠ There is a short ribbon cable connecting the keyboard to the netbook.

Step 12



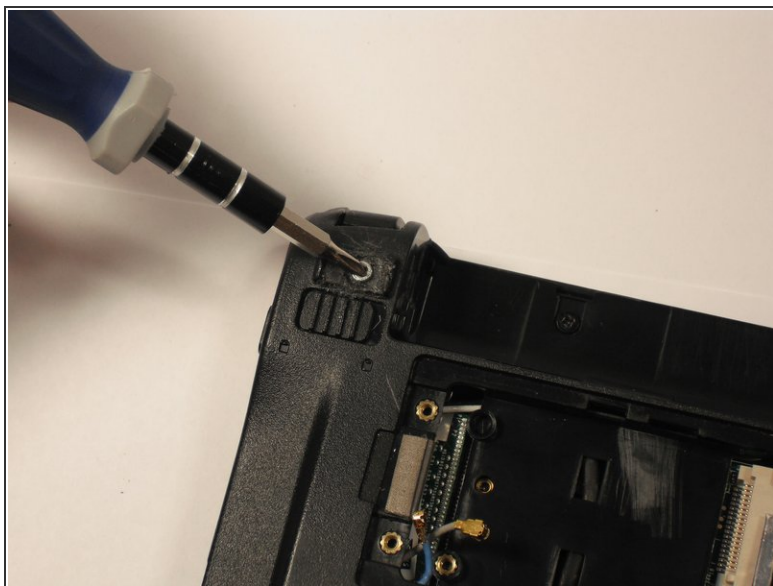
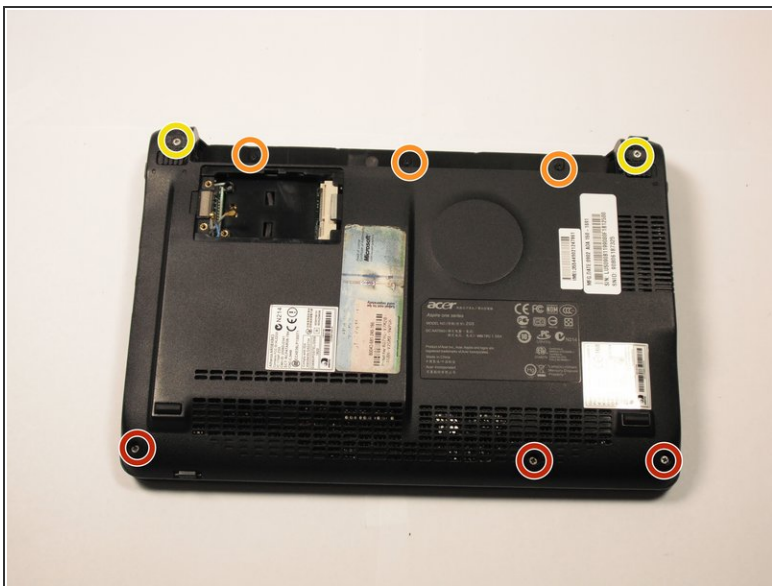
- Disconnect the ribbon by lifting the black plastic hinge and removing the clear blue cable.

Step 13 — Top Case



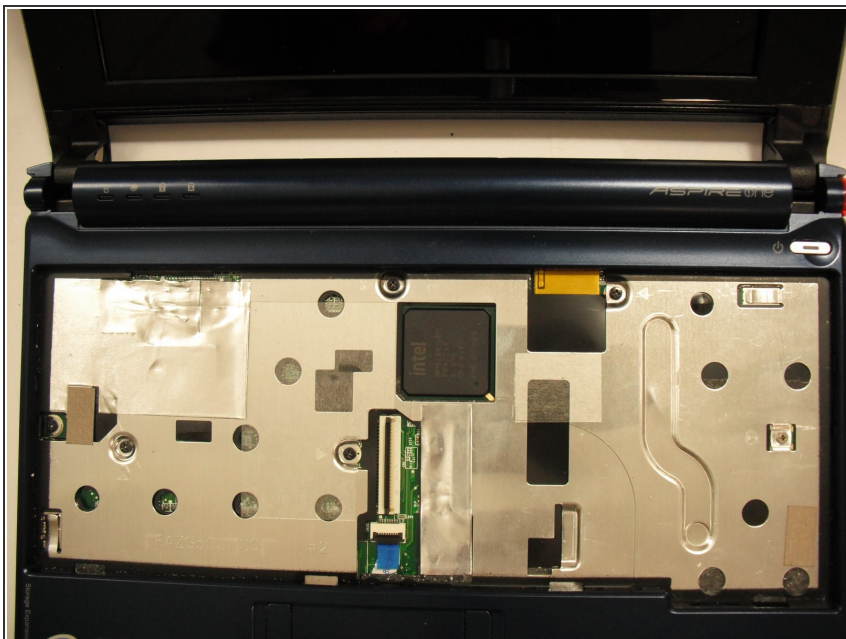
- Close the display and turn the ZG5 over so that the battery compartment faces away from you.

Step 14



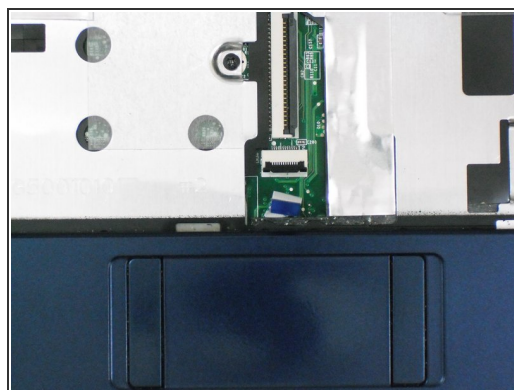
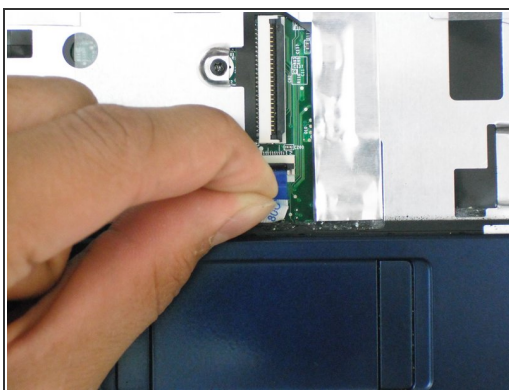
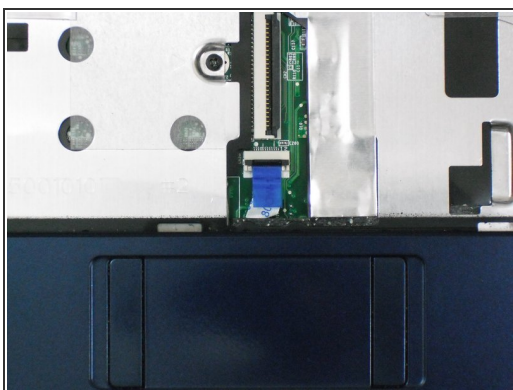
- Remove three 5.8 mm Phillips #0 screws from the bottom of the case
- Remove three 3.9 mm Phillips #1 screws from the battery compartment.
- Remove two 5.8 mm Phillips #0 screws from underneath the feet near the hinges.

Step 15



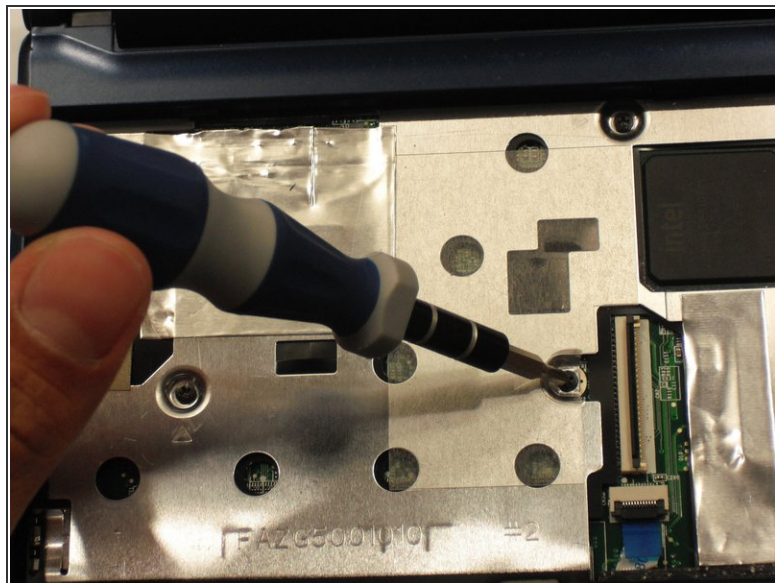
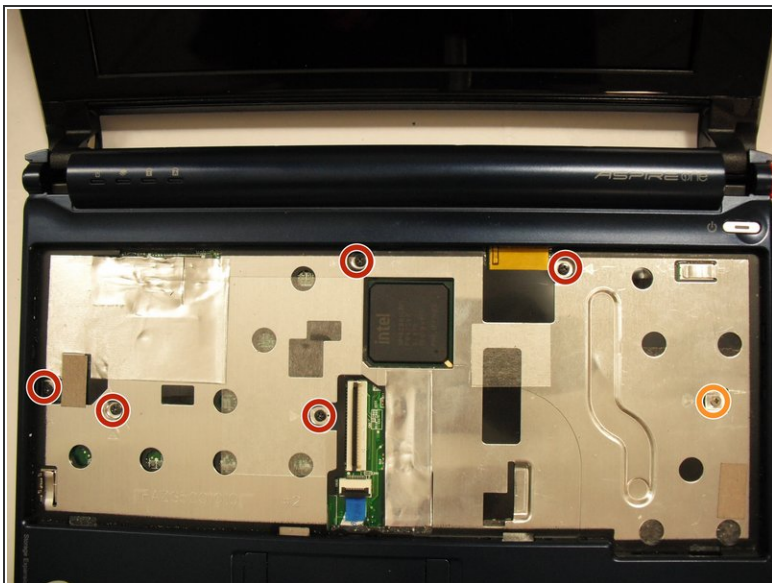
- Turn the netbook back over and open the display with the keyboard cavity facing you.

Step 16



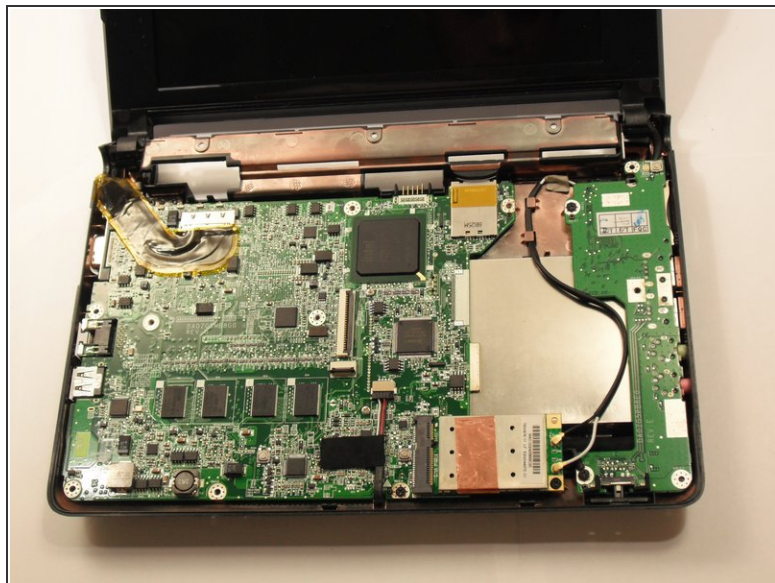
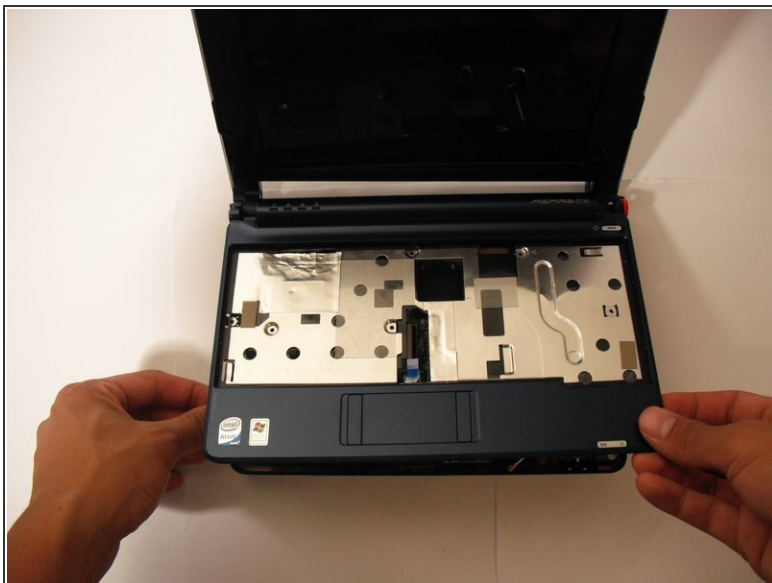
- Flip up the retaining flap on the trackpad ribbon cable ZIF connector.
- Using the blue tab, pull the trackpad ribbon cable from its socket on the motherboard.

Step 17



- Remove the five black 4.7 mm Phillips #0 screws from the metal casing.
- Remove the single silver 4.3 mm Phillips #00 screw from the right side of the metal casing.

Step 18



- Starting at the red rings along the hinge, insert a spudger or plastic opening tool into the seam between the two halves of the case.
- Slide the spudger toward the front of the device, releasing the small clips that hold down the top case.
- Gently lift off the top case.

To reassemble your device, follow these instructions in reverse order.