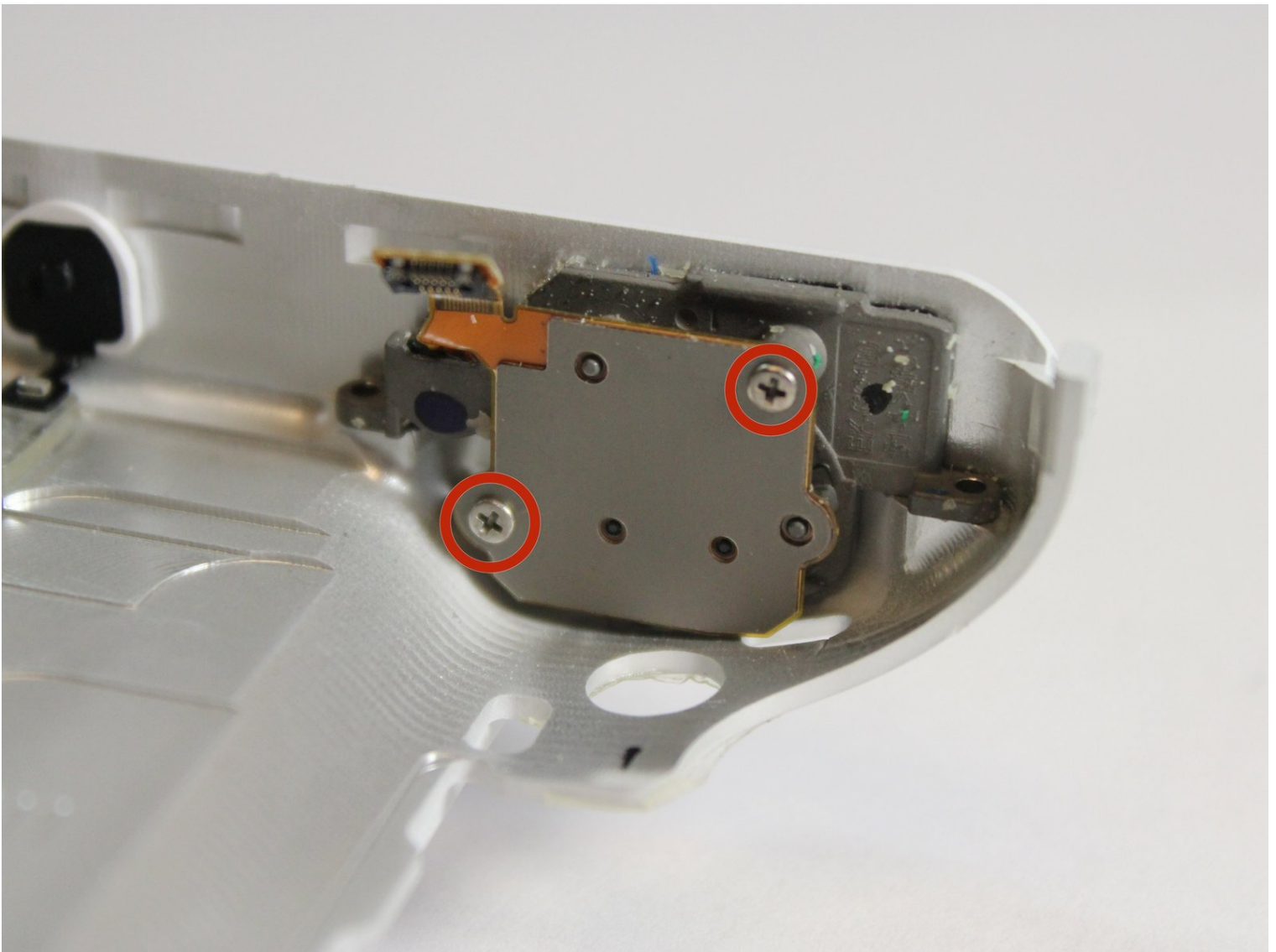




# Samsung Galaxy Camera Capture button Replacement

Written By: Richard Hicks





## TOOLS:

Tournevis cruciforme #0 (1)

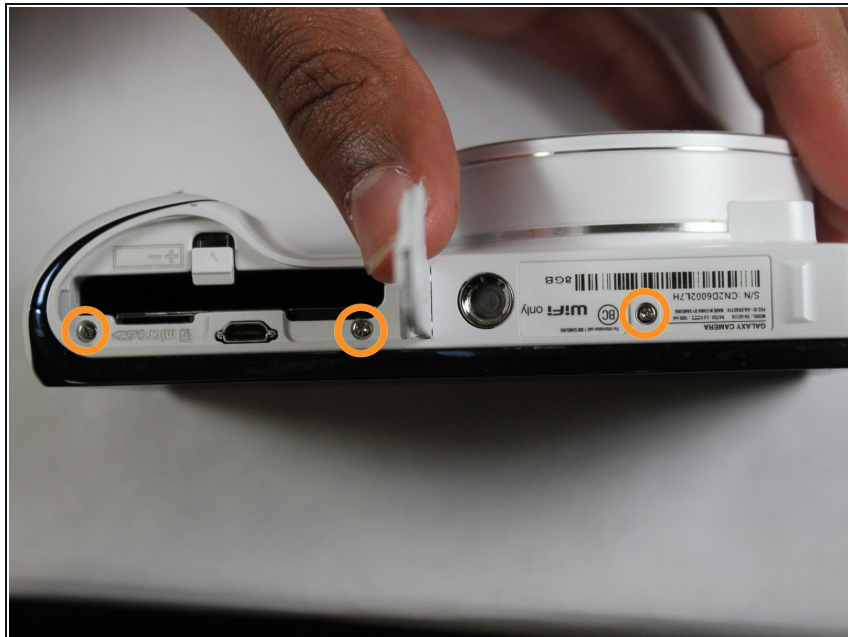
Outil pour ouvrir iFixit (1)

### Step 1 — Screen



- Begin removing the 3/16" screws for the device.

## Step 2



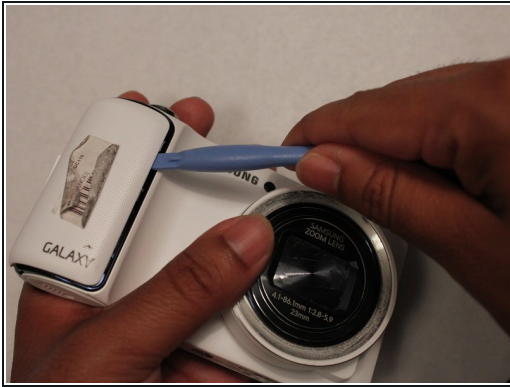
- Turn the device and remove the additional 3/16" screws.

## Step 3



- Turn the device and remove the additional 3/16" screw.

## Step 4



- Take the white cover plate off.

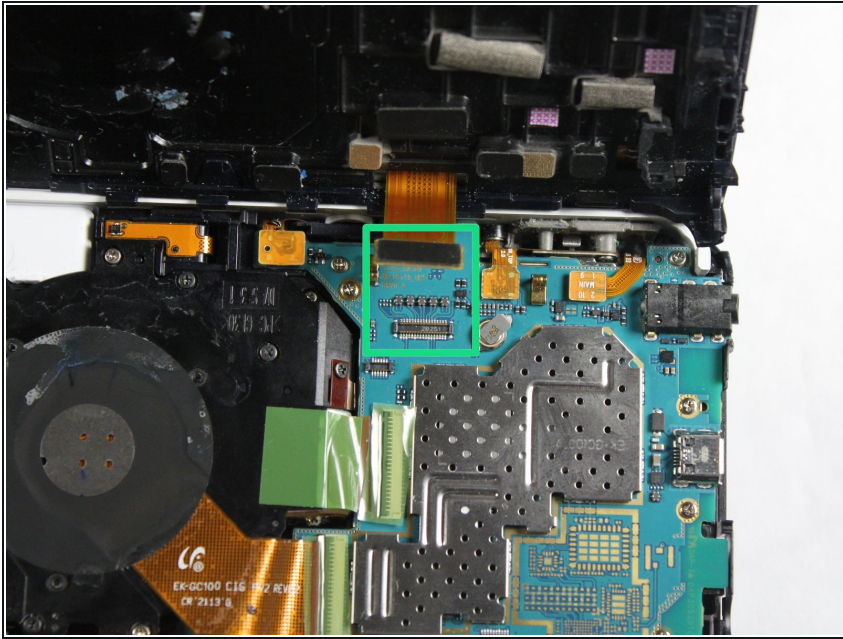
## Step 5



- Using the plastic opening tools, pry open the camera from the bottom.
- ❗ This may require a moderate use of force because of the sealing glue.



## Step 6



- Gently pull the connector away from the motherboard.

## Step 7 — Lens and Motherboard



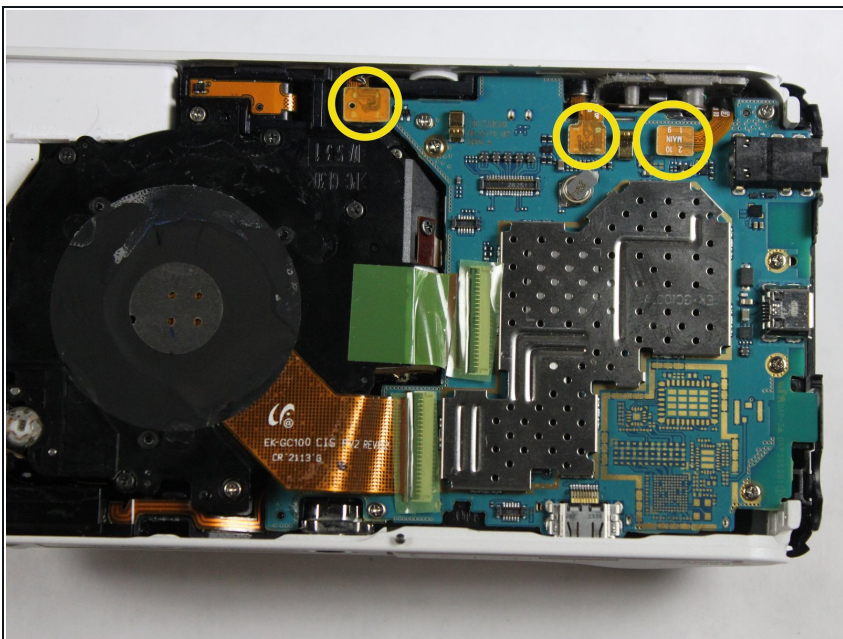
- Unscrew the motherboard's screws. There are 4 3/32" screws and 3 5/32" screws.

## Step 8



- Unscrew the lens' screws. There are 1 black 4/32" screw, 3 3/16" black screws, and 2 white 5/32" screws.

## Step 9



- Pull these connectors away from motherboard.

## Step 10



- Lift the motherboard and lens out of the case.

## Step 11 — Unscrew



- Remove all the screws circled. There is 1 1/8" screw by the flash, 1 9/32" screw that holds the flash button, 2 5/32" screw that is on the



grey frame for the flash, and 2 5/32" screws that holds the cable frames on the top left.

## Step 12



- Unscrew the 3 5/32" screws that cover the battery plate.

## Step 13



- The black plates on the other side can be removed after these screws.

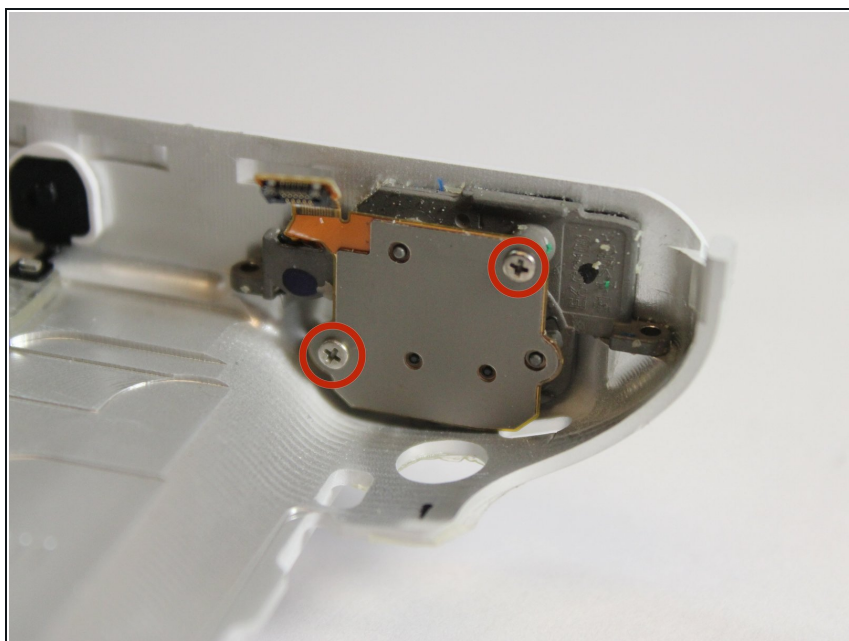


## Step 14



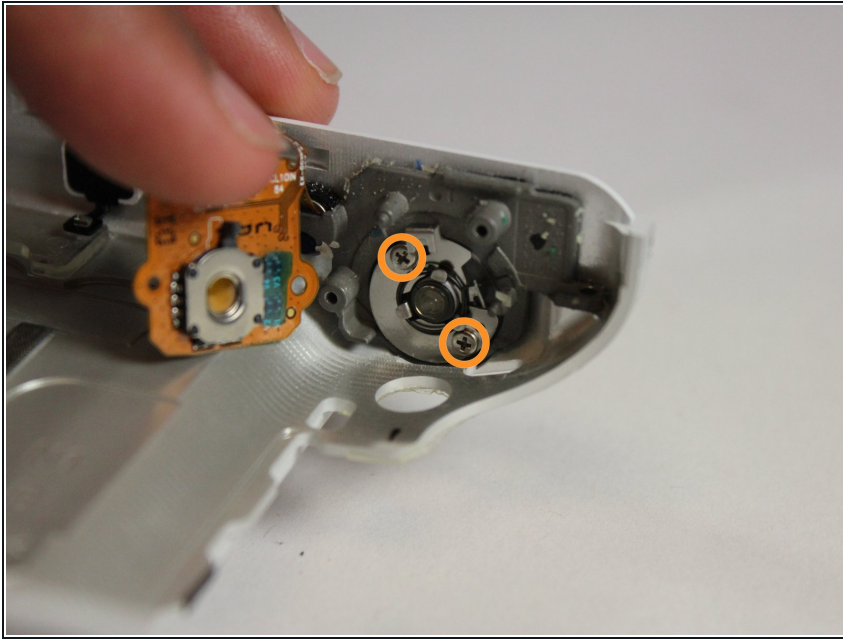
- Pull the flash and battery case out of the device.

## Step 15 — Capture button



- Unscrew the 2 5/32" screws on the grey plate.

## Step 16



- Pull the plate aside and unscrew 2 1/8" screws on the button.

## Step 17



- The Capture button can now be removed.

To reassemble your device, follow these instructions in reverse order.