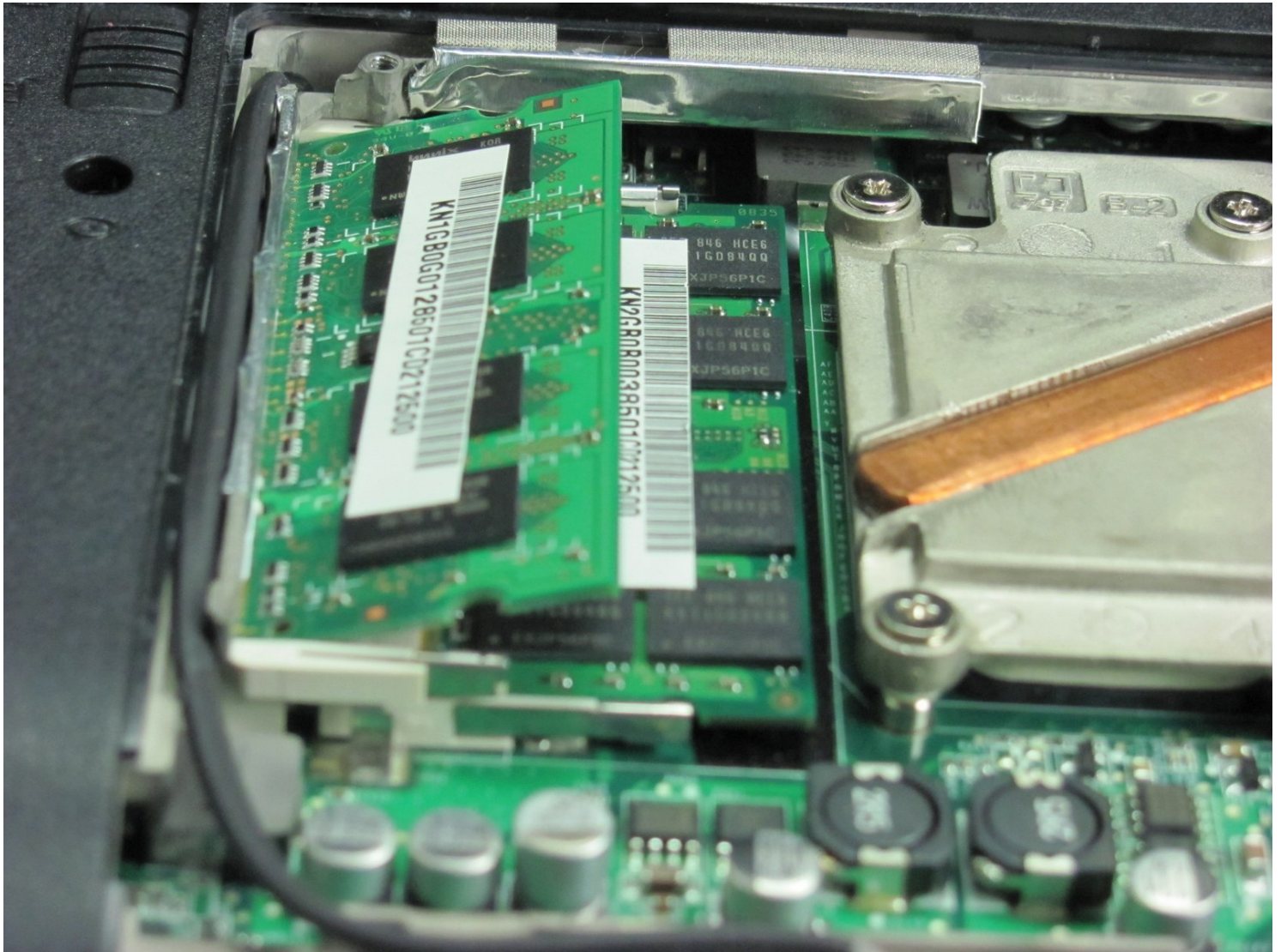




# Gateway MD2614u RAM Replacement

You are going to remove the back cover, locate...

Written By: Toni Pipes



# INTRODUCTION

You are going to remove the back cover, locate the RAM, take out the RAM, and either replace it or reinstall it.

## TOOLS:

Phillips #00 Screwdriver (1)

## PARTS:

PC2-5300 1 GB RAM Chip (1)

PC2-5300 2 GB RAM Chip (1)

## Step 1 — Back Cover



- Place the laptop so the back cover is facing up.

## Step 2



- Remove the 8 screws from the back cover using the Phillips #00 screwdriver.

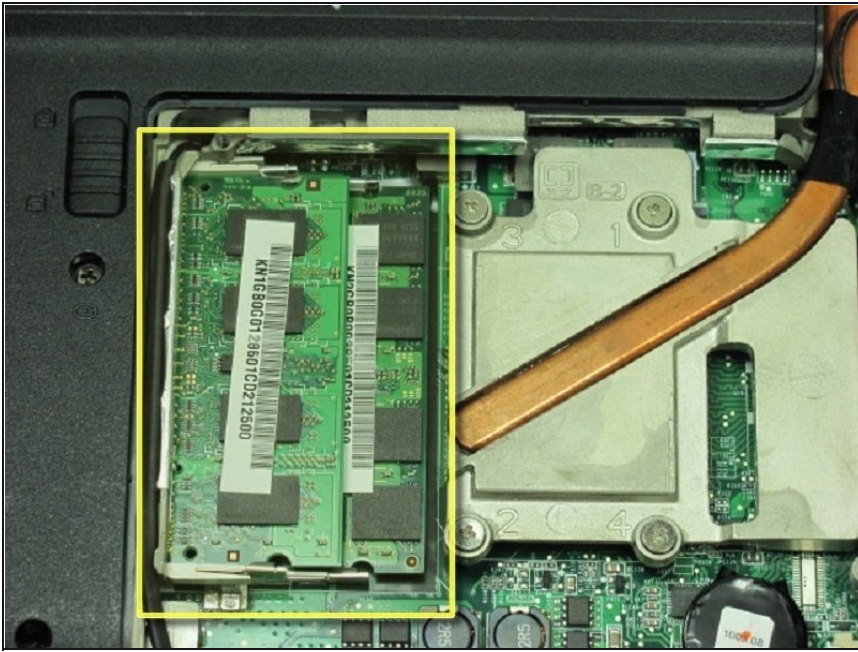
## Step 3



- Lift off the cover.



## Step 4 — RAM



- Identify the RAM, which is a stack of two green cards in the upper left-hand corner.

## Step 5



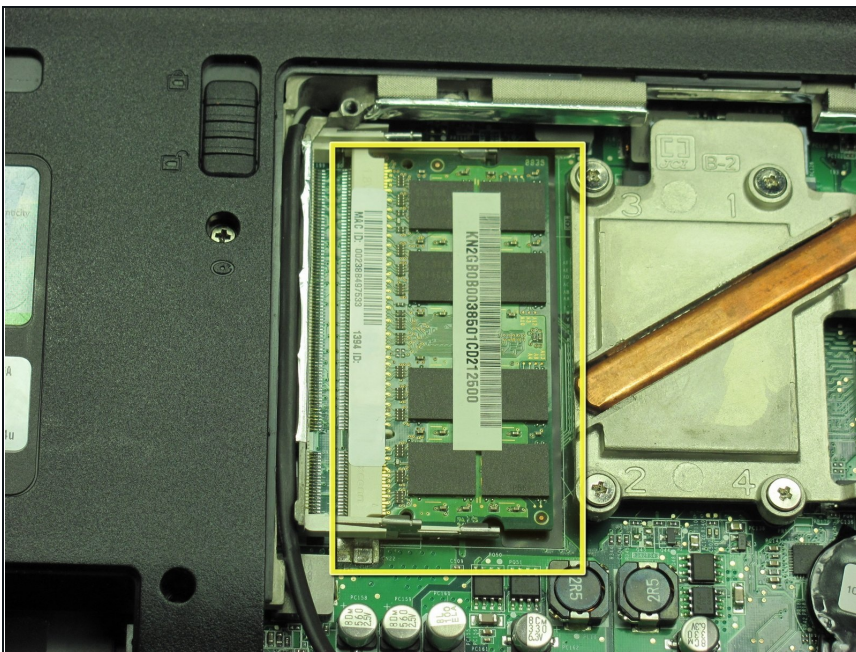
- There are silver tabs on both sides of the ram. Simultaneously push the silver tabs outward.

## Step 6



- The card pops up 20 degrees and is loose enough to remove with your hand.
- Carefully pull the card to the right horizontally.

## Step 7



- Follow the same steps for the second RAM card, which is under the one you just removed.

---

To reassemble your device, follow these instructions in reverse order.

