



# Panasonic Lumix DMC-TZ5 Front Cover Replacement

This guide will show you how to replace the front casing of your Panasonic Lumix DMC-TZ5.

Written By: Kevin Lufkin



## INTRODUCTION

The front casing is the frontal frame on your Panasonic Lumix DMC-TZ5. All the major components of the camera are attached to this front casing.



### TOOLS:

- [Phillips #00 Screwdriver](#) (1)
  - [Spudger](#) (1)
-

## Step 1 — Back Cover



- Remove the battery and memory card from the device.

## Step 2



- Remove 4 screws from the right side of the camera.
  - There are two 3.4mm screws at the top.
  - There are two 2.2mm screws at the bottom.



### Step 3



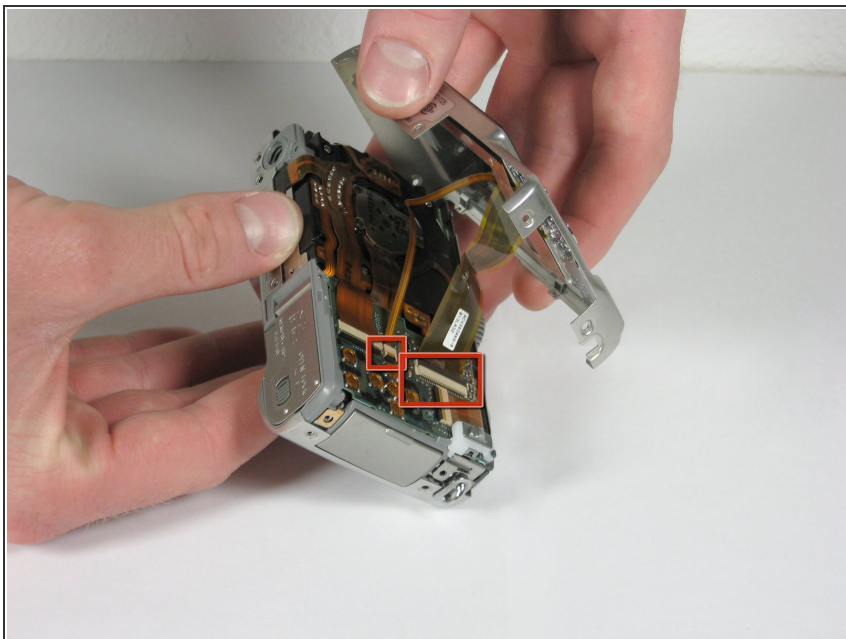
- Remove the single 3.4mm screw on the left side of the camera.

### Step 4



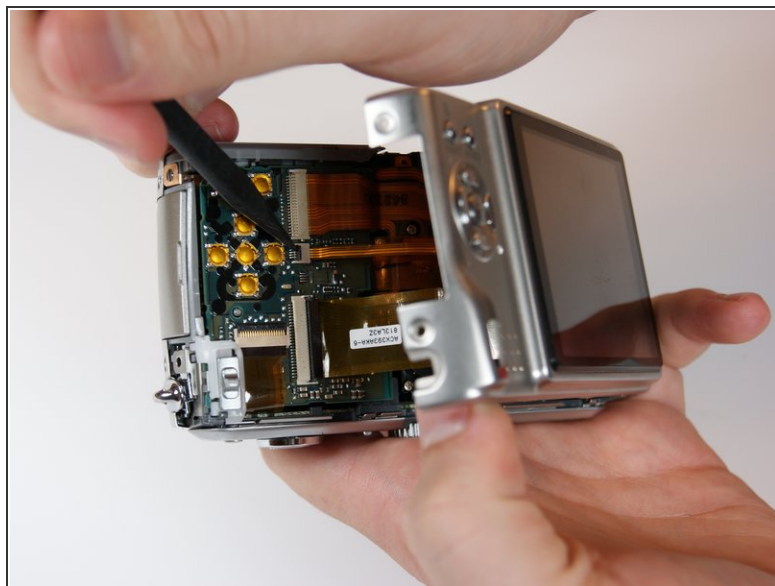
- Remove 5 screws from the base of the camera.
  - There are two 2.2mm screws next to the battery compartment.
  - There are three 4mm screws around the tripod mount.

## Step 5



- Slowly slide the back cover away from the device
- ⚠ The back casing is held in place by two ribbon cables. Do not pull the back cover too far from the camera.

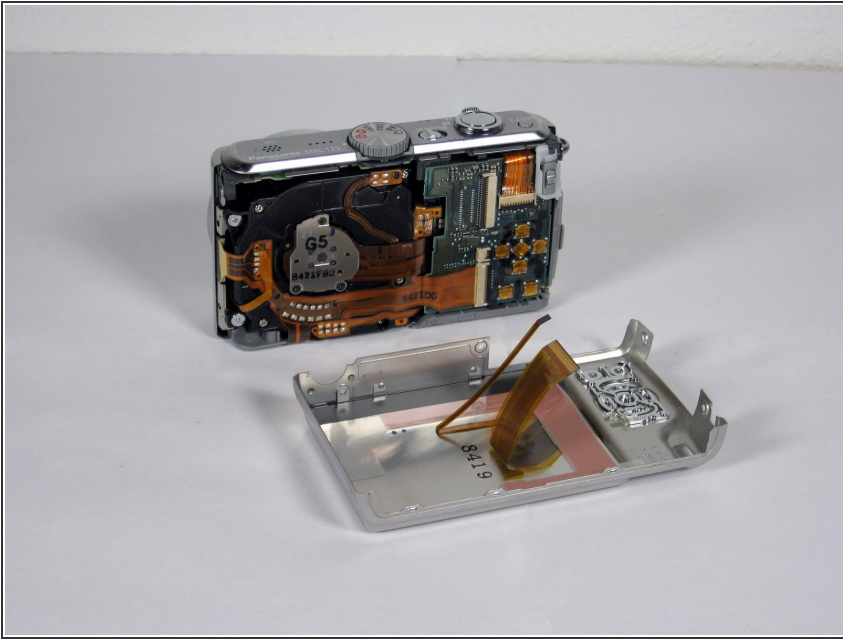
## Step 6



- Detach both ribbon cables using a spudger.
- Use the tip of the spudger to lift the black clip upward, unlocking the ribbon cable.

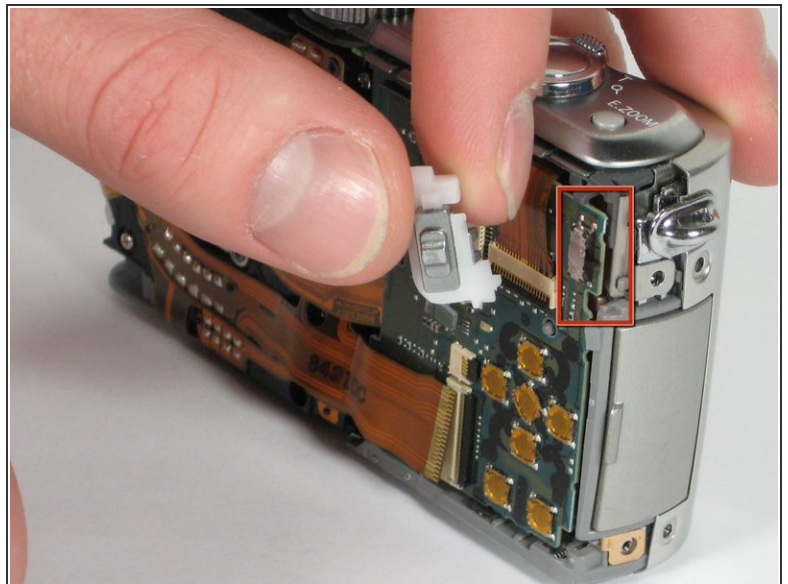
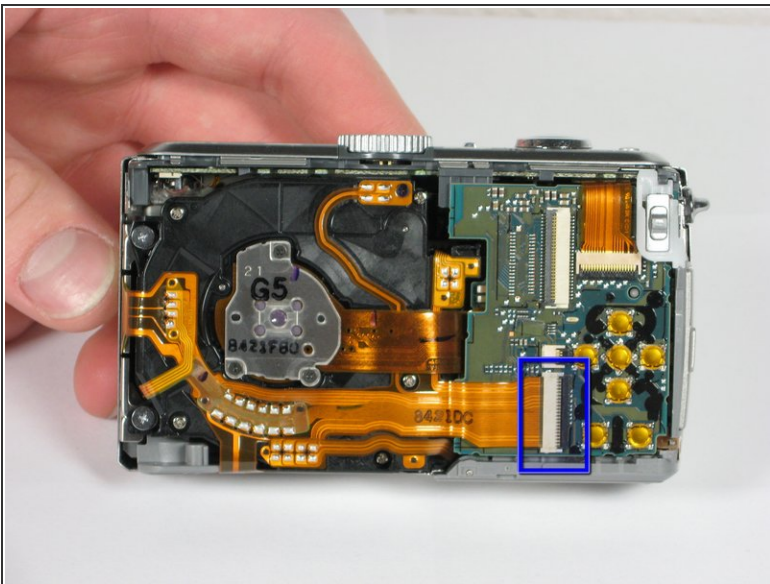


## Step 7



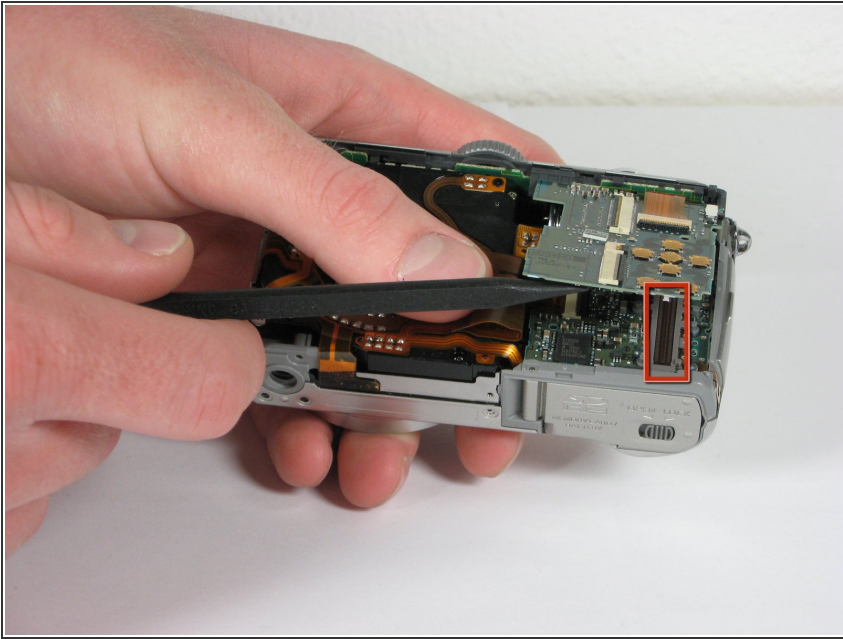
- Remove the back casing from the camera.

## Step 8 — button board



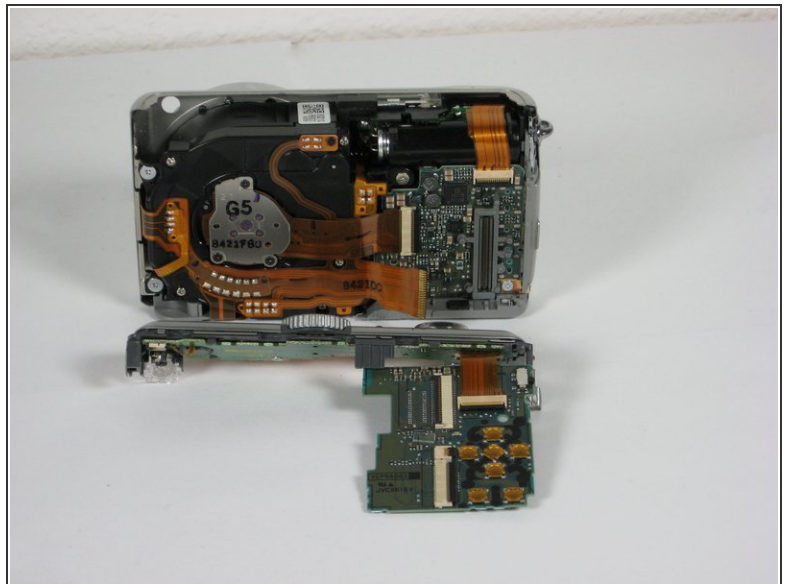
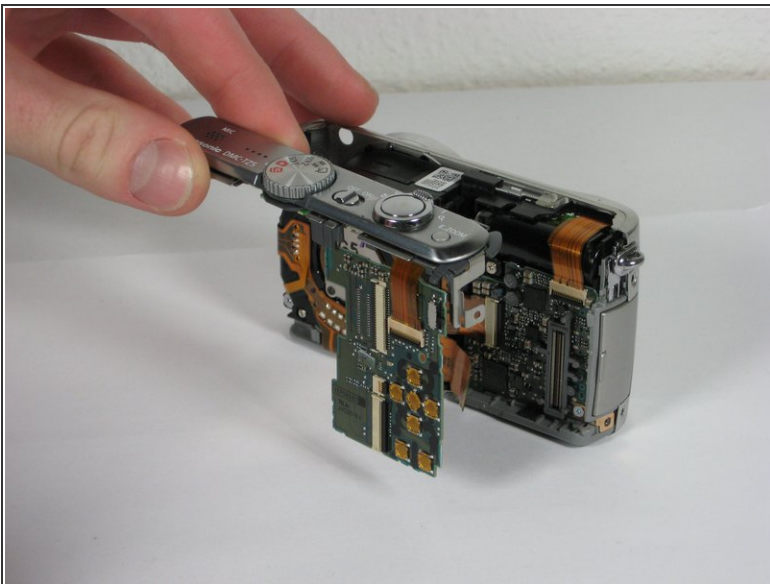
- Use the spudger to remove the ribbon cable connecting the lens casing to the circuit board by lifting up the black clip.
- Carefully remove the function switch cover. This unit snaps on and off.

## Step 9



- Carefully unsnap the front logic board from the rear logic board using a spudger.

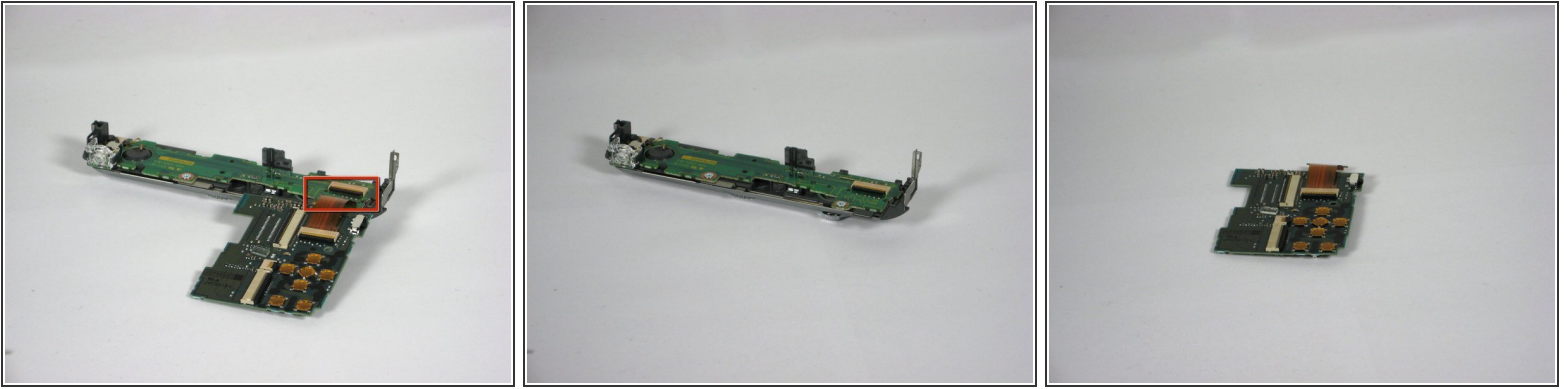
## Step 10



- Slide the entire top part of the camera that is attached to the logic board, horizontally away from the camera.

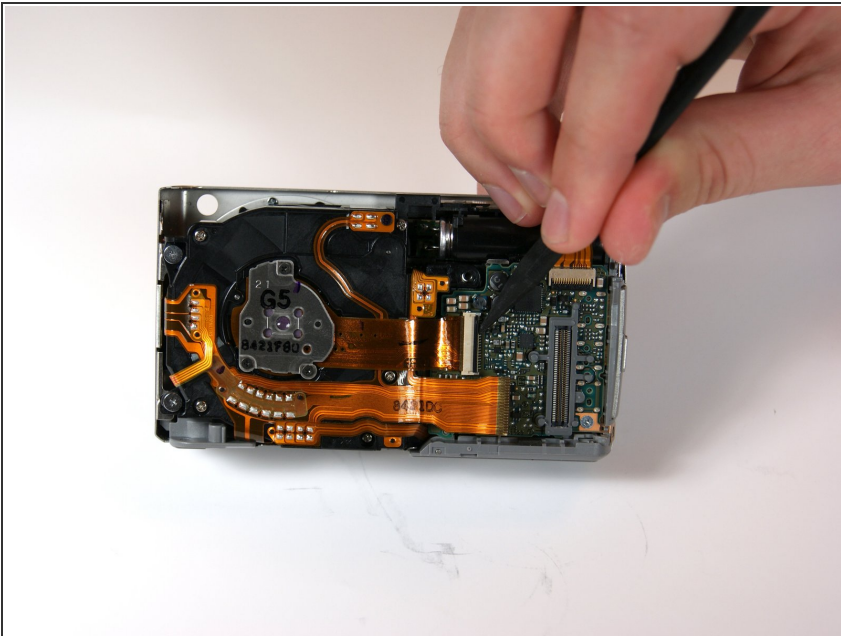


## Step 11



- Remove the ribbon cable from the top connection panel by unlocking the black clip with a spudger.
- This leaves you with the logic board and the top connection panel separate and free from the camera

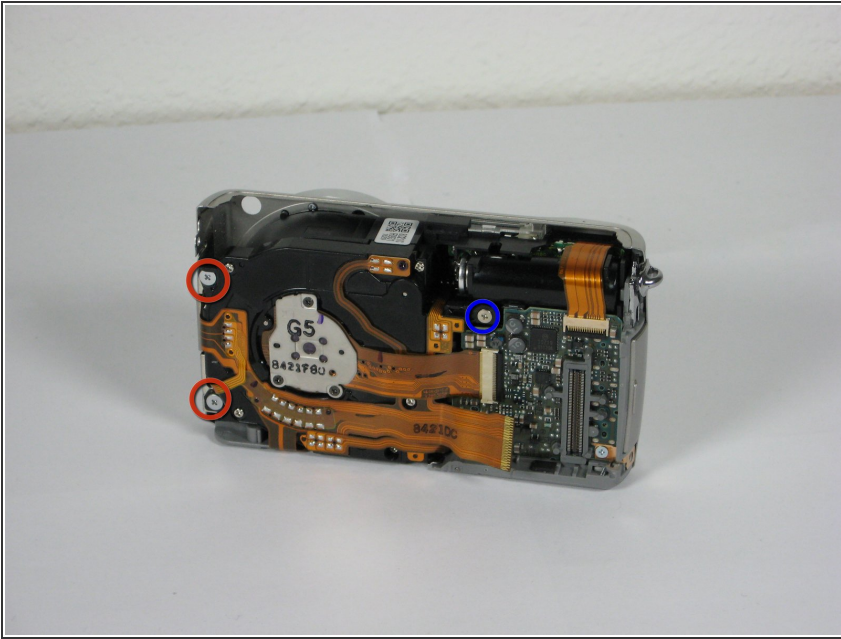
## Step 12 — Camera Lens Assembly



- Use a spudger to detach the ribbon cable from the circuit board. Lift the black clip up to unlock it as before.

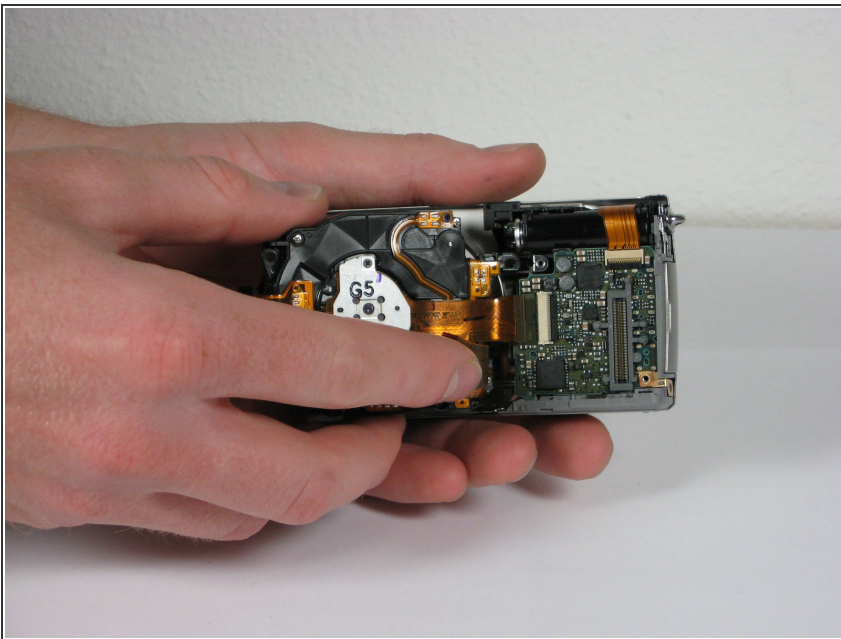


## Step 13



- Remove the 3 screws holding the lens assembly in place.
  - The two screws on the left are 4.5mm with washers.
  - The single screw on the right is 4mm.

## Step 14



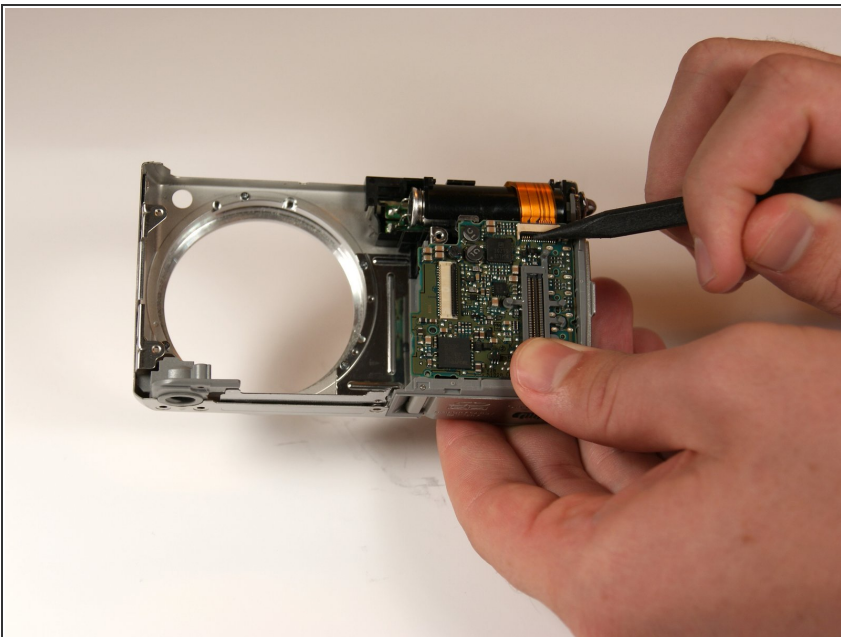
- Push the lens assembly slightly toward the circuit board, and pull the left side out of the casing first. You will have to wiggle this out gently.

## Step 15



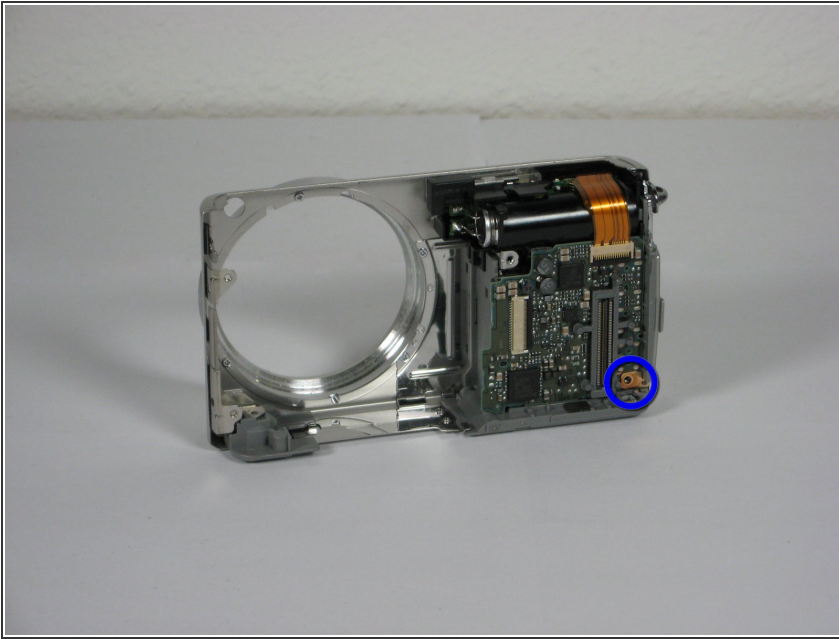
- Remove the entire assembly out of the casing.
  - The ribbons on the left and bottom of the assembly simply rest on the camera housing.

## Step 16 — AV port circuit board



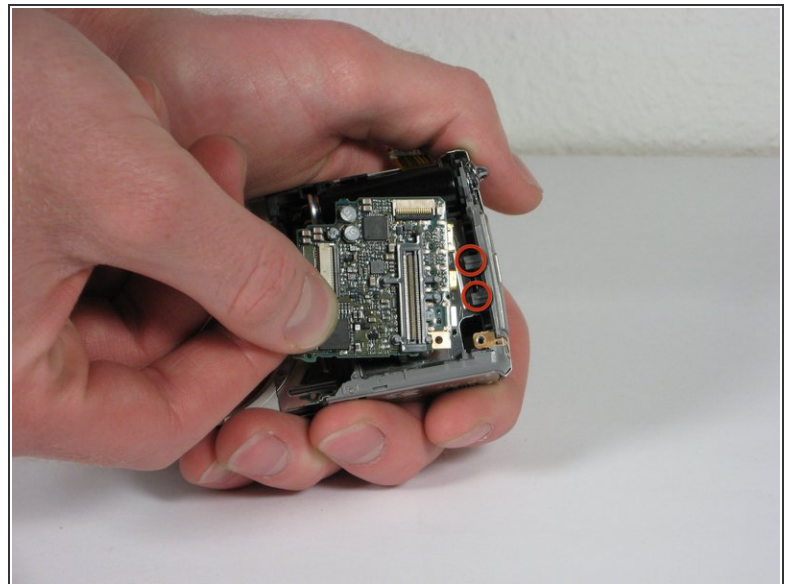
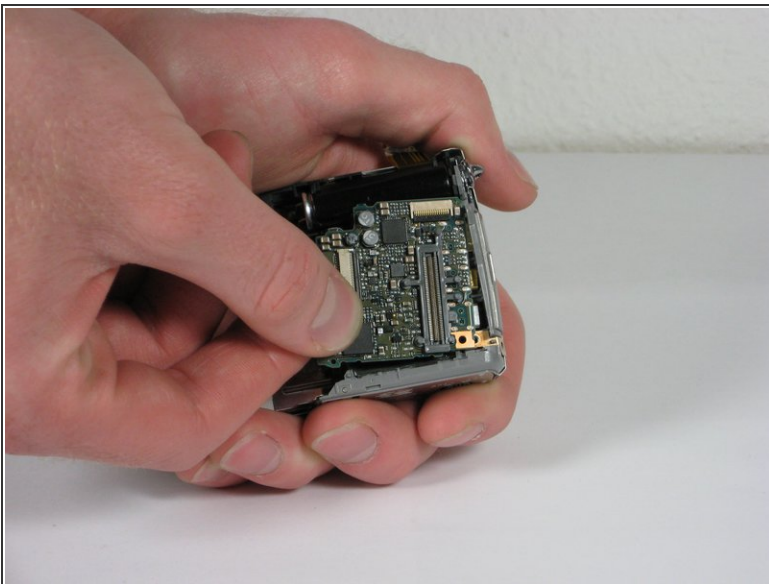
- Use the spudger to unclip the top ribbon cable from the circuit board.

## Step 17




- Remove the single 2mm screw in the bottom right corner of the circuit board

## Step 18

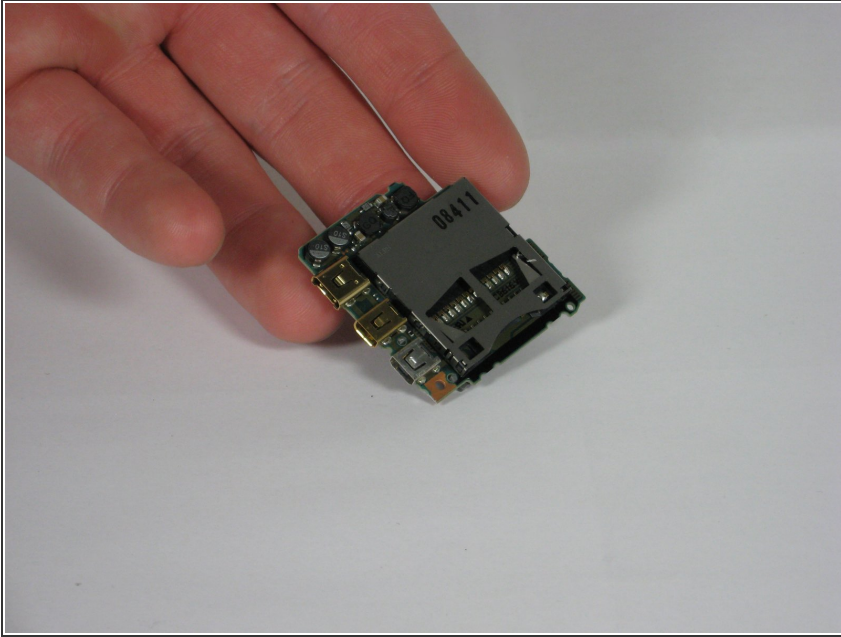


- Gently slide the circuit board out away from the port connections. Pull it toward where the lens used to be. Some wiggling may be necessary to remove.

 The circuit board is fitted into slots attached to the side of the camera. Do not angle upwards to remove.

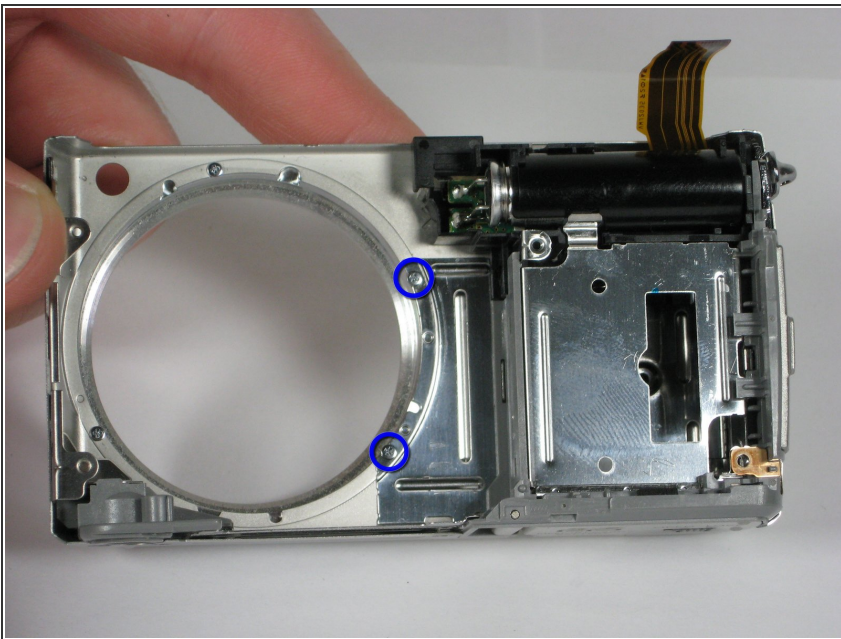


## Step 19



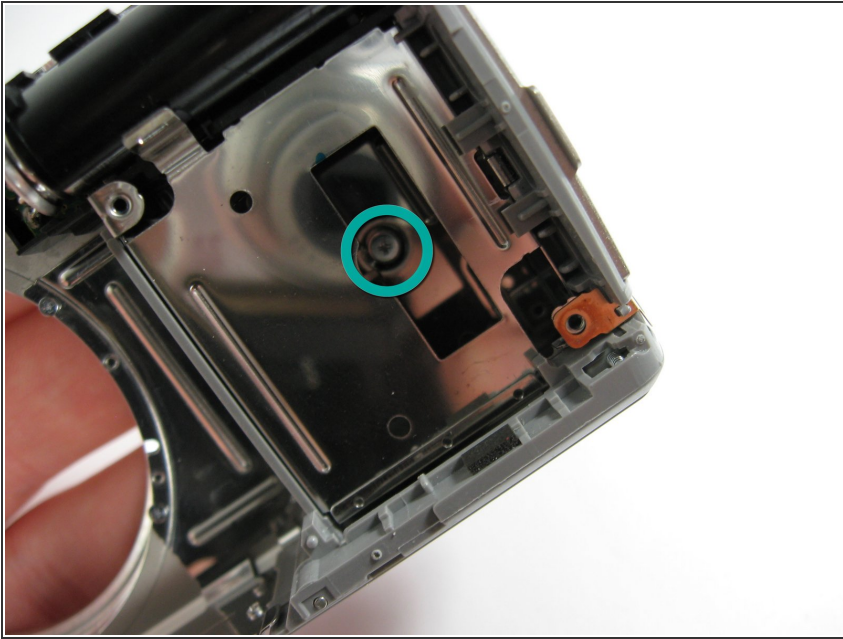
- Take note of how the slots fit into the circuit board for easy replacement.

## Step 20 — Front Cover



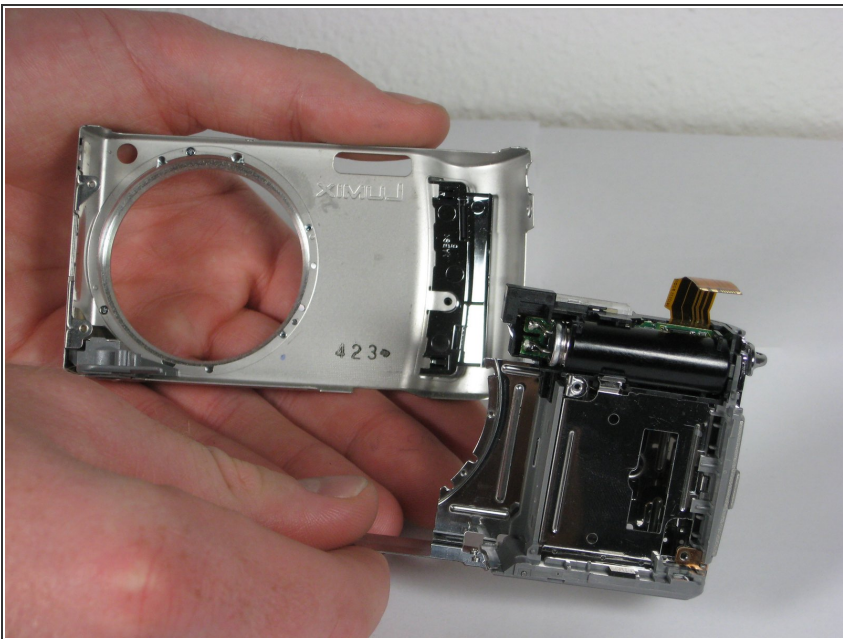
- After removing the AV circuit board you are left with the front casing attached to the inner casing and flash unit.
- First you must remove two 3.5mm blue screws near the hole of the lens that attach the inner casing.

## Step 21



- Remove the 3.5mm colorless screw that lays within the square opening of the inner casing.

## Step 22



- Remove the front casing from the rest of the device.

To reassemble your device, follow these instructions in reverse order.