



# Sony Cyber-shot DSC-W690 LCD screen Replacement

This guide will show you how to disassemble and instal new LCD screen.

Written By: Will Norris

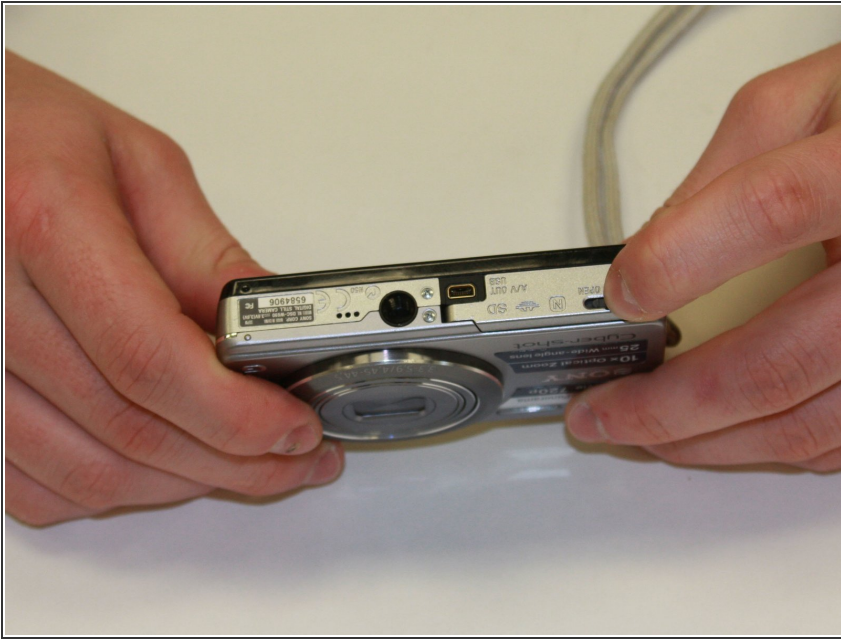




## TOOLS:

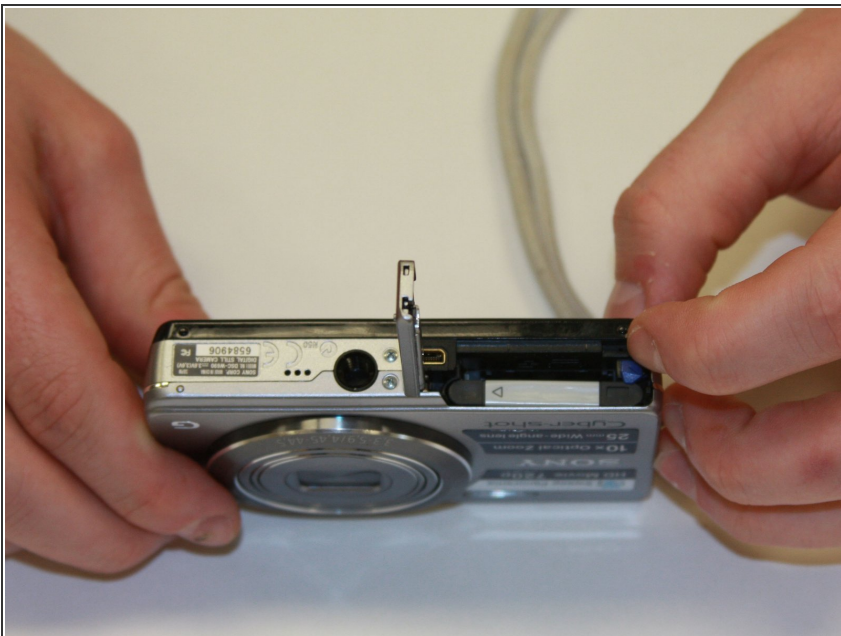
- [Phillips #00 Screwdriver](#) (1)
  - [Spudger](#) (1)
-

## Step 1 — Battery



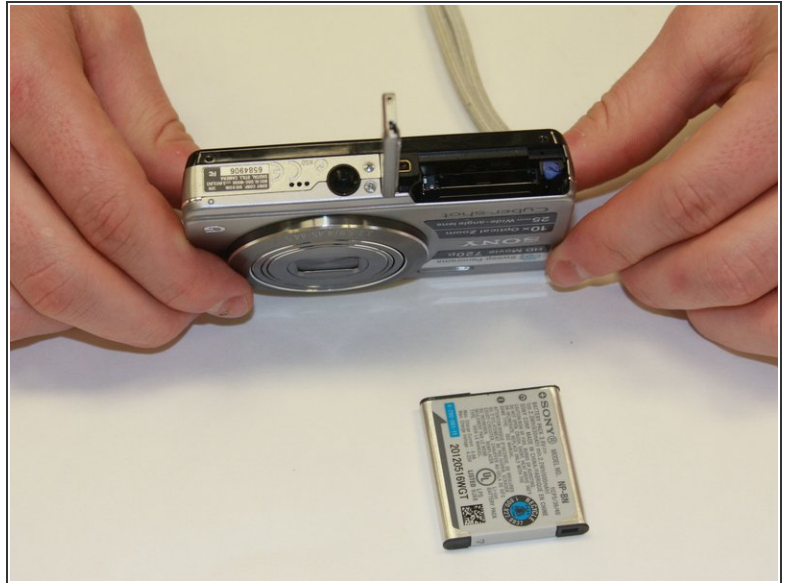
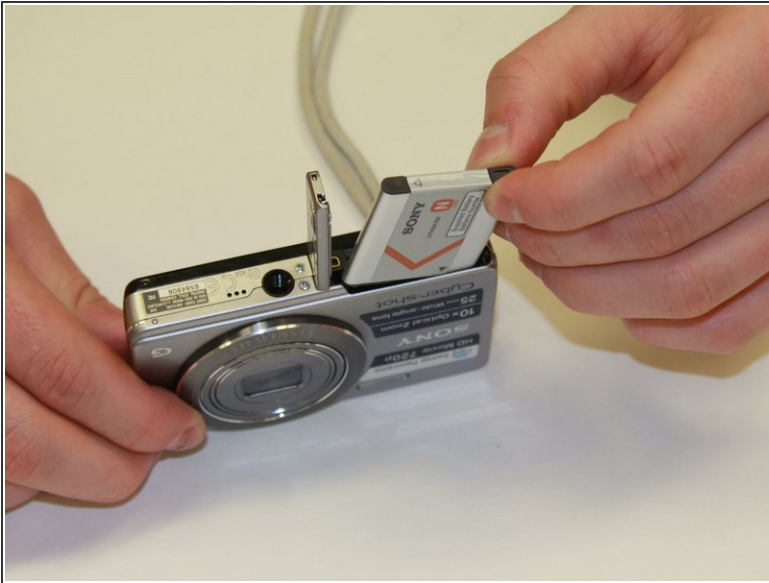
- Open the battery door.

## Step 2



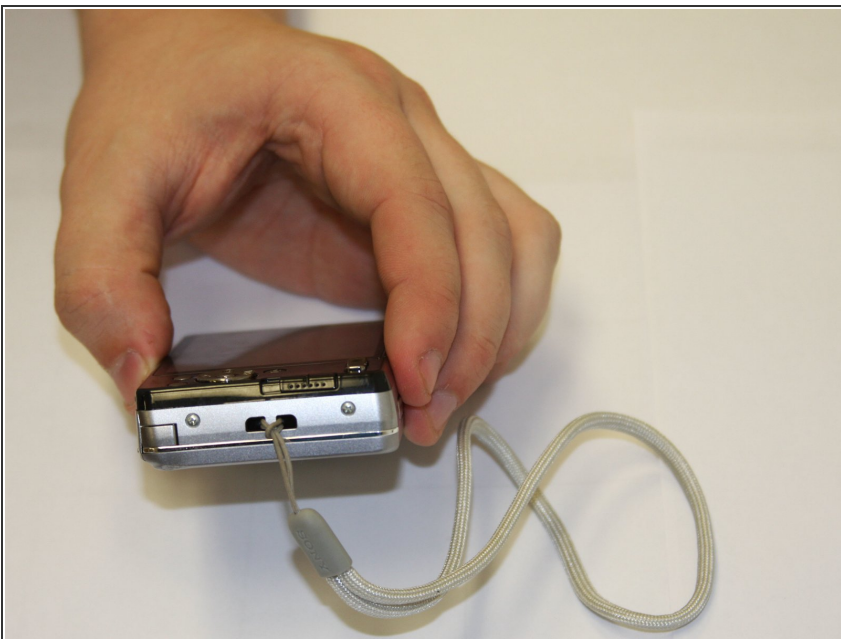
- Open the battery lock to release the battery.

## Step 3



- Remove the battery.

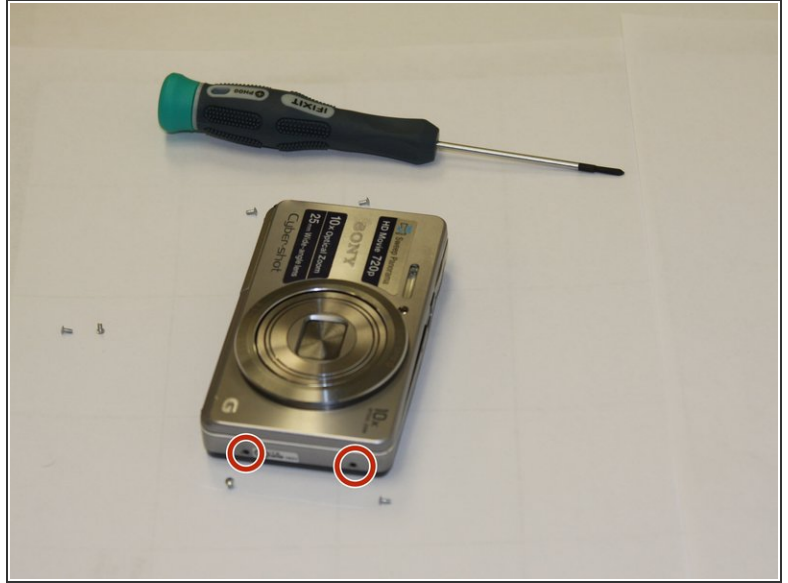
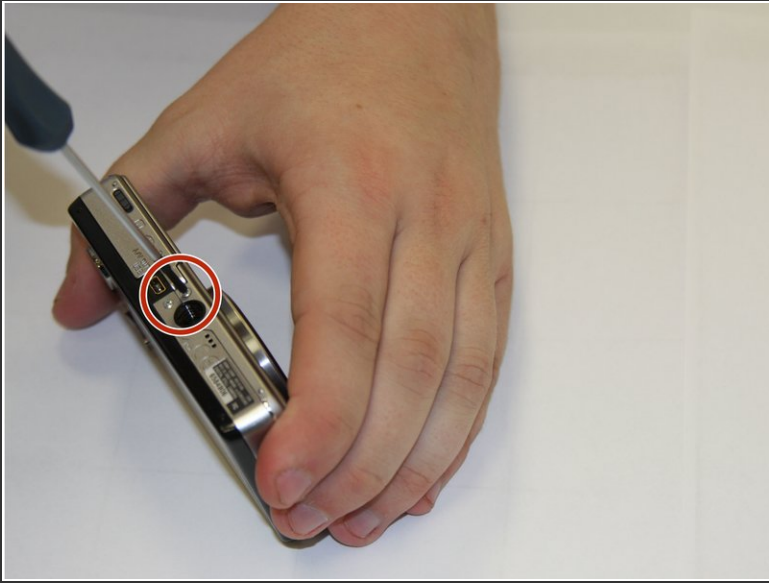
## Step 4 — Front and Back Case



- Remove the wrist strap

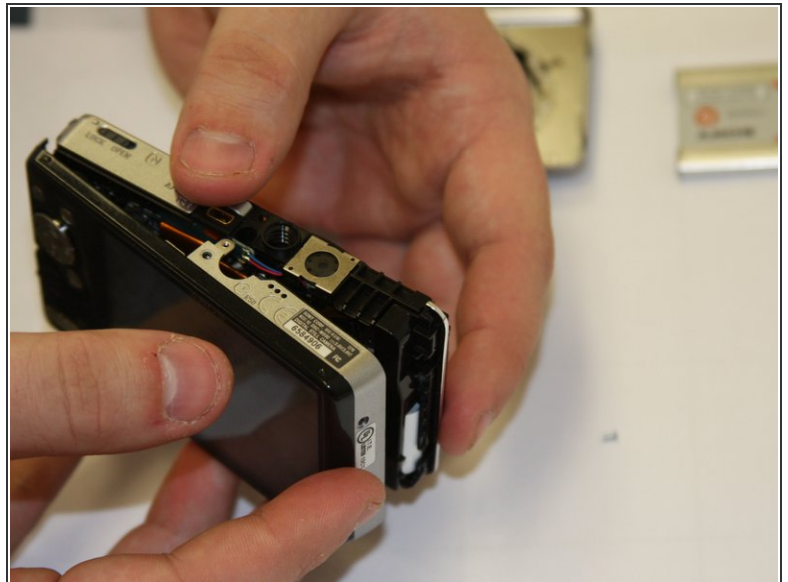
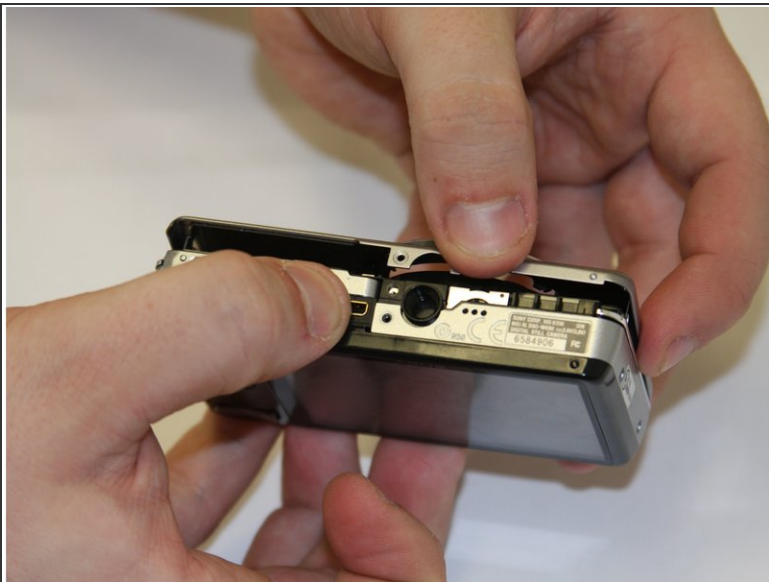


## Step 5



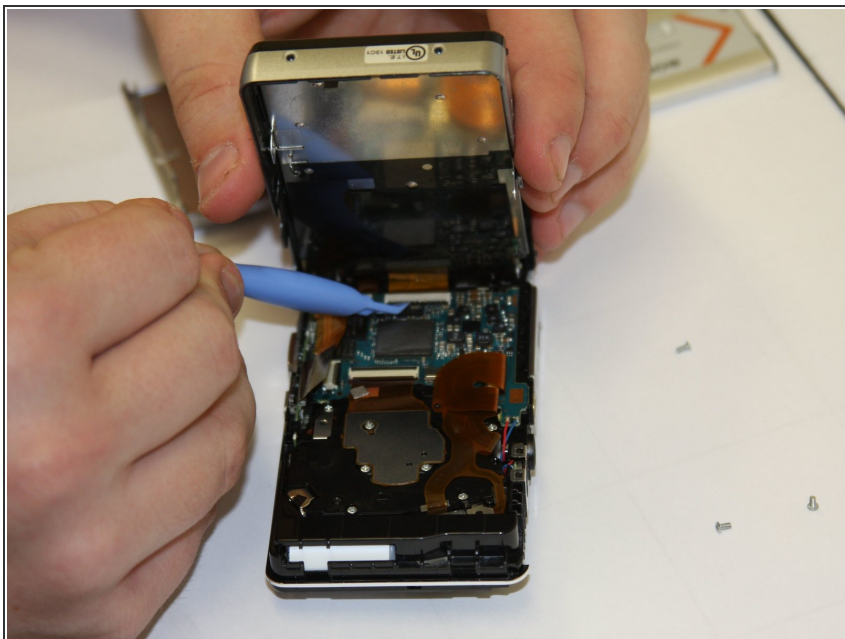
- Remove all 6 3mm outside screws

## Step 6



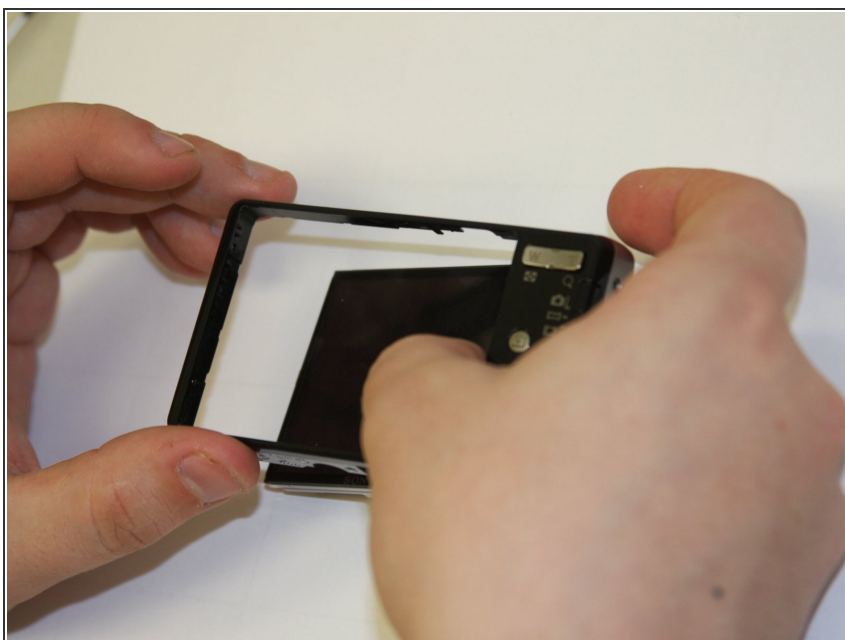
- Carefully pry the case apart.

## Step 7 — LCD screen



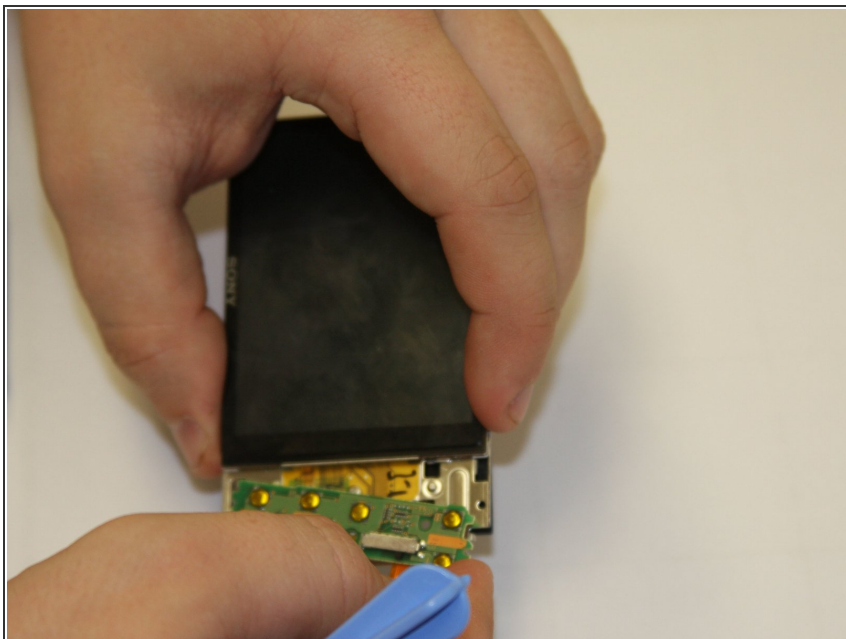
- Use spudger to delicately open wire contact.

## Step 8



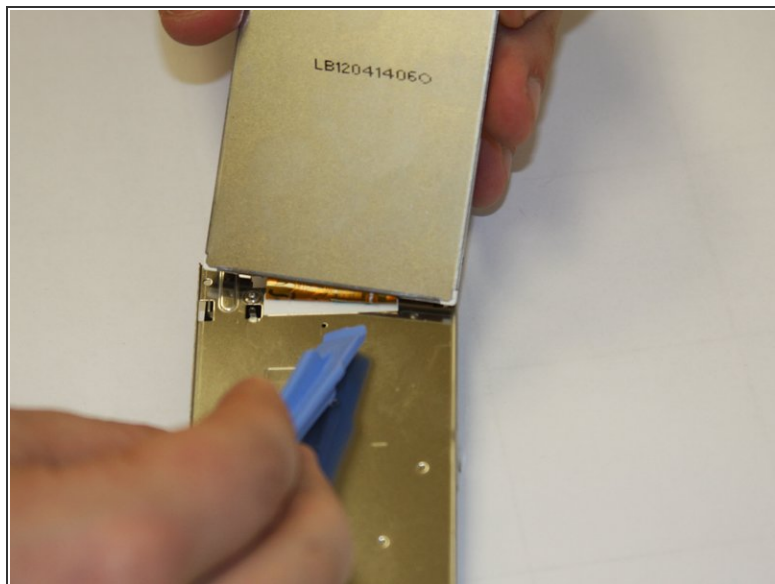
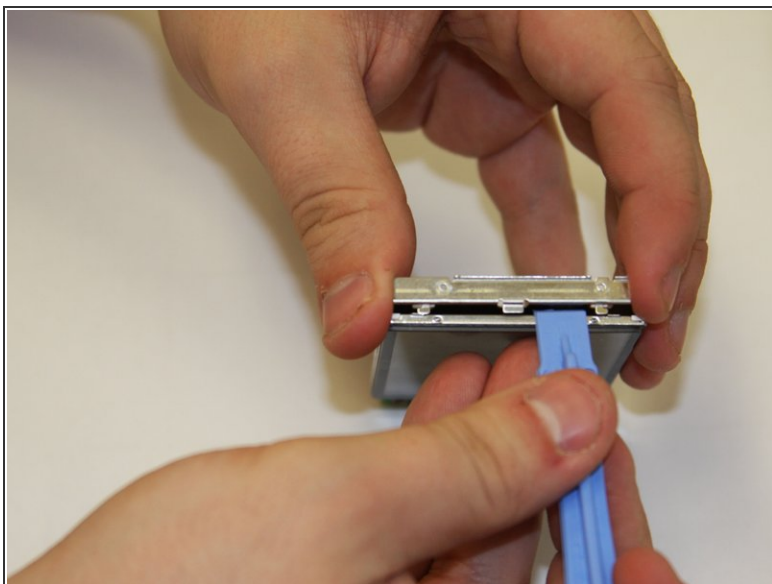
- Gently push the LCD screen out of back case.

## Step 9



- Remove the button circuit board.

## Step 10



- Use spudger to pry apart the LCD screen from the support bracket.

To reassemble your device, follow these instructions in reverse order.