



Gateway 600YG2 Battery Replacement

How to remove and install the battery.

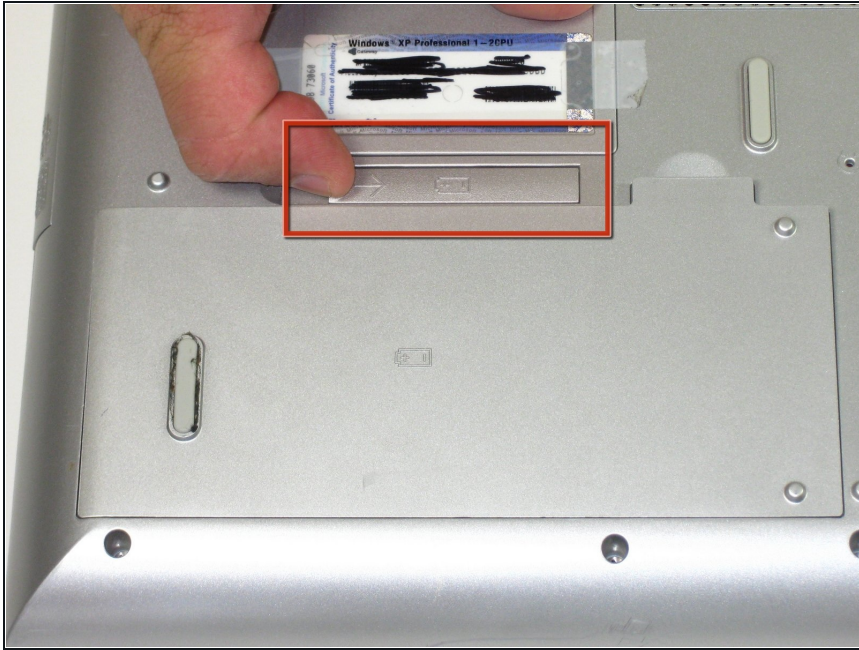
Written By: Aaron Brauner



INTRODUCTION

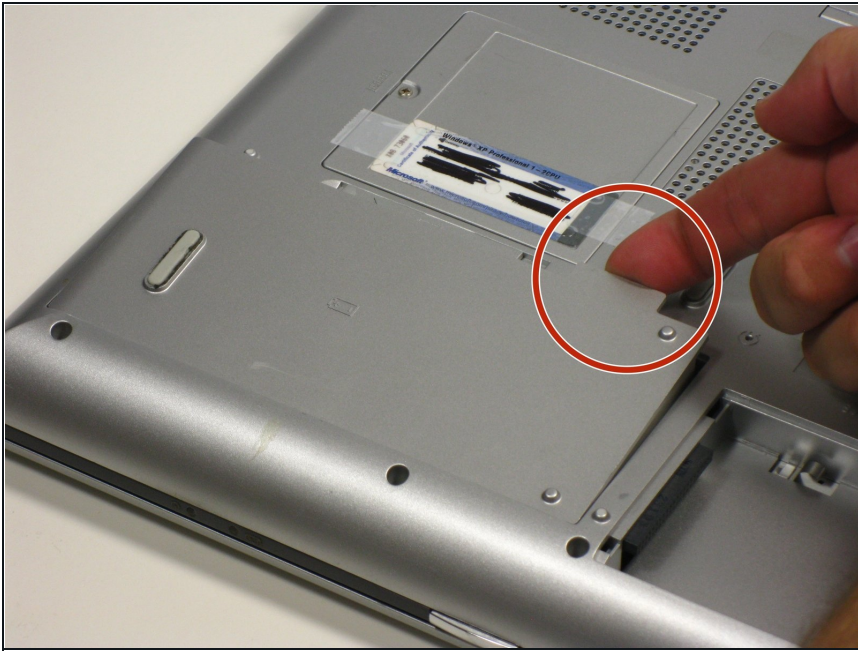
How to remove and install the battery.

Step 1 — Battery



- Flip the laptop over.
- Slide the battery release tab to the right with your index finger to open the battery cover.

Step 2



- Remove the battery cover using the tab on the right side.
- Take the battery out with your index finger.

To reassemble your device, follow these instructions in reverse order.