



Dell XPS M1210 Fan Replacement

This Dell XPS M1210 guide will assist you with replacing your Laptop fan. This guide can also help with how to remove the fan, for cleaning.

Written By: Dave



INTRODUCTION

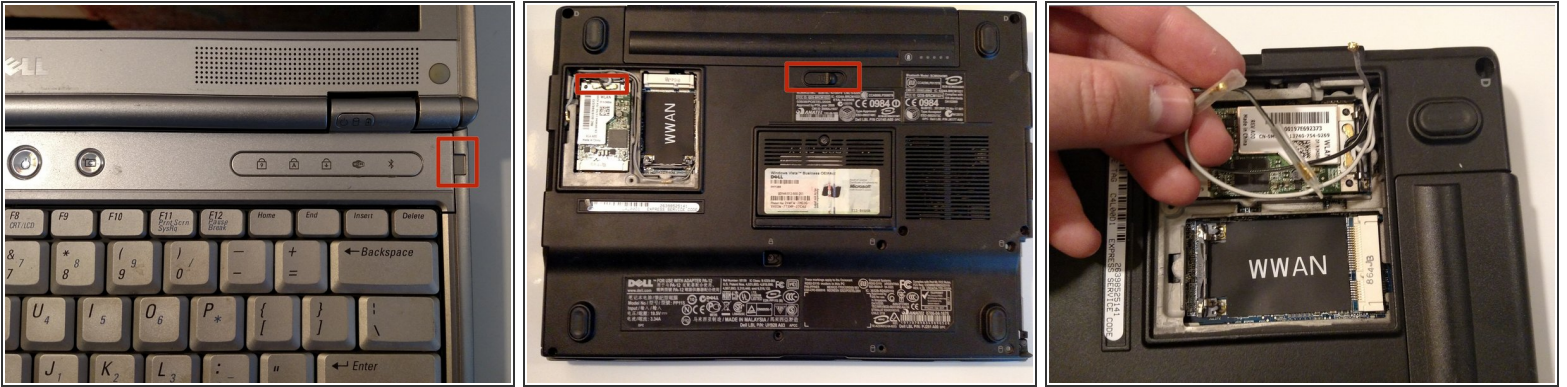
The laptop has one main fan. If cleaning is required, it would be determined by visual inspection. The fan should be free of dust, dirt, or any other visible obstructions that could prevent the fan or flow of air from moving freely. If the fan is clean, but is still noisy or is not spinning ...then, replacement is recommended.




TOOLS:

- [Flathead Screwdriver](#) (1)
 - [Phillips #2 Screwdriver](#) (1)
-

Step 1 — Fan



 Before opening up your laptop make sure it is completely **turned off** and is **not connected** to the charger.

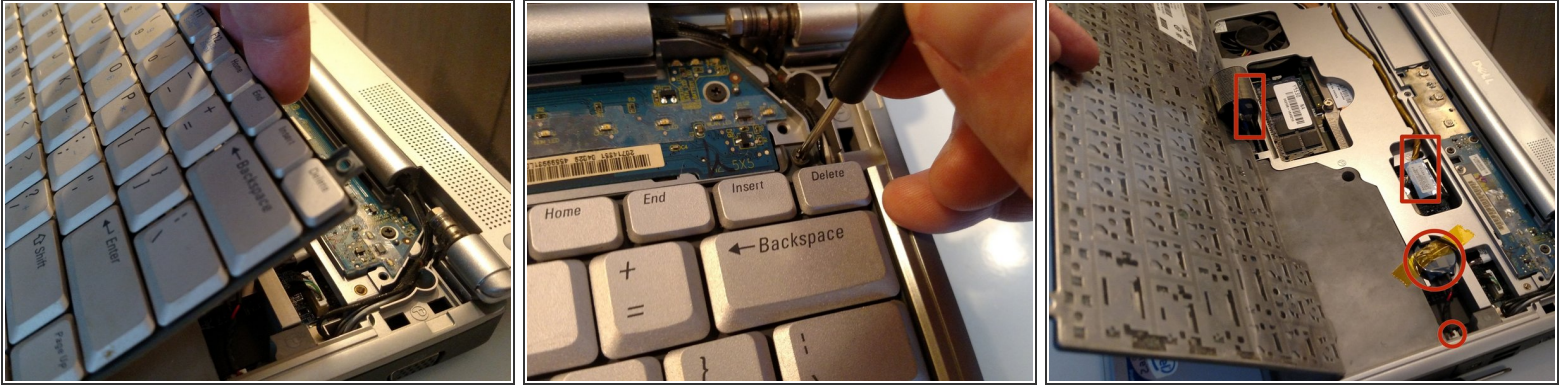
- To prevent any damage to the system ,remove the main battery.
- Turn the computer upside down and loosen the captive screw on the communications card cover.
- Disconnect any antenna cables that are attached to the Mini-cards.

Step 2



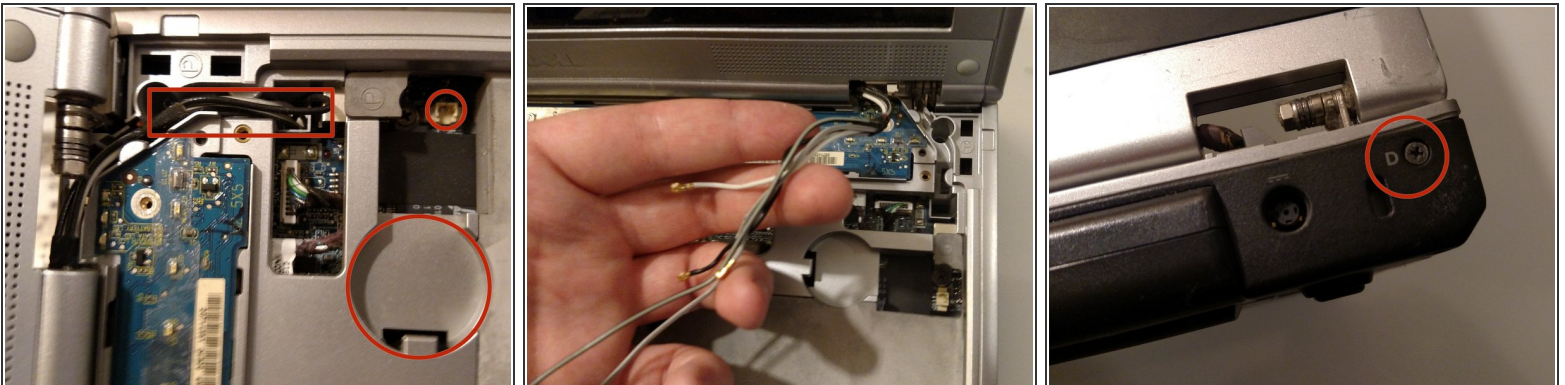
- Open the display 180 degrees.
- Insert a plastic scribe or a flat head screwdriver into the indent of the hinge cover on the right. Pry open the hinge cover.
- Be gentle when prying open the hinge cover. Wiggle the cover left and right slowly lifting it up.

Step 3



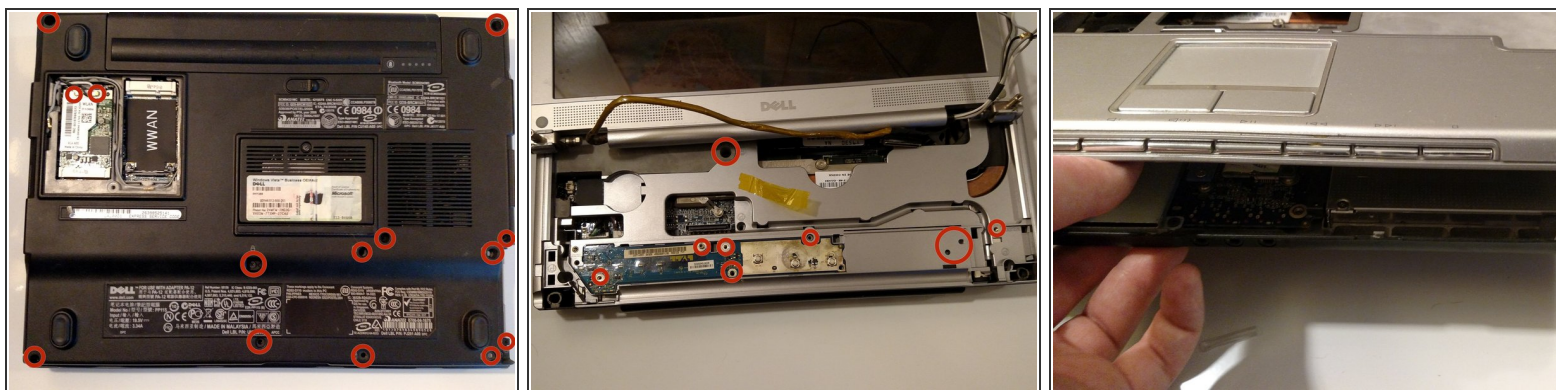
- Remove the three Philips head screws at the top of the keyboard.
- Lift the keyboard slightly up to disconnect the keyboard cable from the system board.
- There will be a keyboard-connector pull-tab that will separate the keyboard from the laptop.

Step 4



- Use the pull-tab to disconnect the display cable from the system board.
- Disconnect the display cable and the antenna cables from their cable channels.
- Remove the four screws that connect the display to the computer base. There should be two on the bottom and two on the back of the computer labeled "D".
- The display should then be disconnected from the rest of the laptop.

Step 5



- To remove the palm rest there will be seven screws labeled "P" that need to be removed.
- Disconnect the coin-cell battery cable from the system board.
- Then disconnect the touch-pad connector from the system board.
- Turn the computer upside down. Loosen the captive screw, and remove the four screws from the bottom of the computer.
- Lift the palm rest from the back of the computer to separate it.

Step 6



- Remove the screw from the fan, and then disconnect the fan cable from the system board.

To reassemble your device, secure the fan with the 4 screws, and reinstall the keyboard and hinge cover in reverse order of the above instructions.

