



Motorola Moto E Battery Replacement

The battery on this phone is covered by a...

Written By: Alex Craig



INTRODUCTION

The battery on this phone is covered by a plastic casing and will require the removal of some screws and plastic parts.

Before you begin, download the [Rescue and Smart Assistant](#) app to backup your device and diagnose whether your problem is software or hardware related.

If your battery is swollen, [take appropriate precautions](#).



TOOLS:

[iFixit Opening Tool](#) (1)
[Metal Spudger](#) (1)
[T4 Torx Screwdriver](#) (1)



PARTS:

[Moto E Battery - Genuine](#) (1)

Step 1 — Battery



⚠ Turn off the device before beginning the battery replacement.

- To remove the back cover, start at one corner and stick the plastic opening tool under the cover and pry it away from the phone.
- With the plastic opening tool, pry all the way around the phone while lifting up on the cover.
- ⓘ You should hear a snapping sound at each corner.

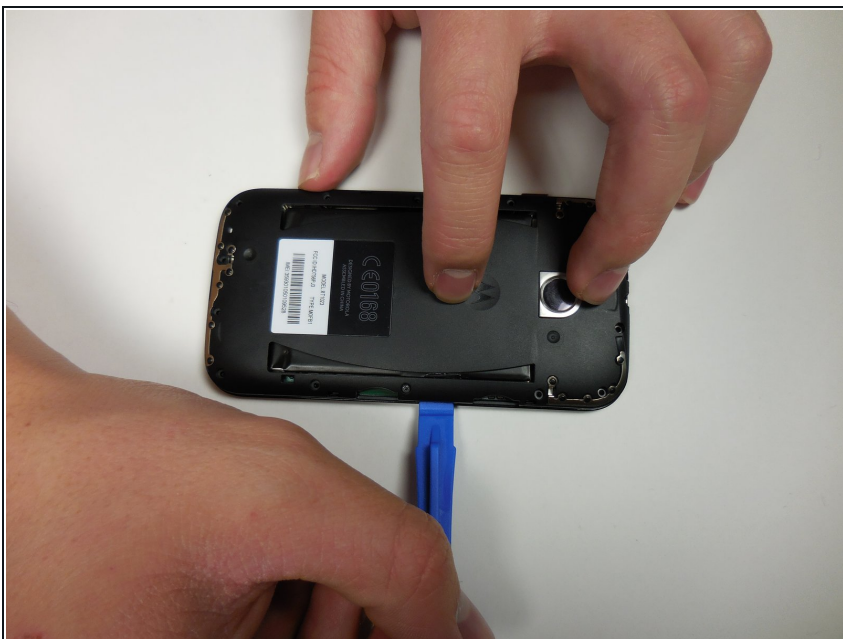
Step 2



- Unscrew all 14- 4mm screws located on the back part of the phone using a T4 Torx bit.

i Working on a magnet board is recommended as the screws are small and can be easily misplaced.

Step 3



- Using the same plastic opening tool as in step 1, once again pry up on the edges of the plastic back cover.

i Be sure that all of the screws are out before lifting the cover. The plastic backing is fragile, and it may break.

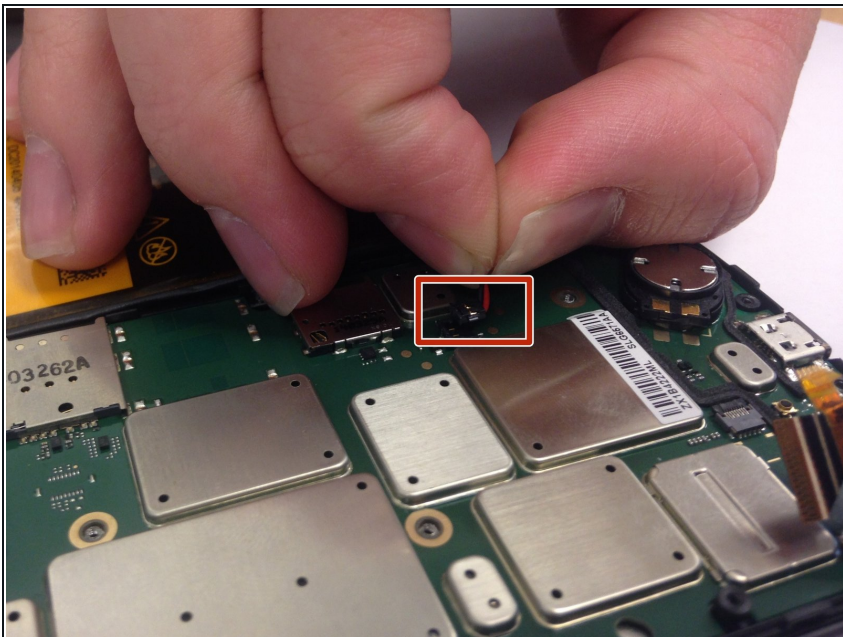
Step 4



- Gently lift the back plate away, exposing the motherboard. The battery will be stuck to the back of the cover, so be careful when lifting it off.

⚠ Do not touch the connections to the battery in the red square on the picture.

Step 5



- Gently pull up on the red and black power cable to lift the connector out of the motherboard.
- Move the battery and cover away from the motherboard.

Step 6



- Lift gently on the battery using the metal spudger tool.
- ❗ The battery is stuck to the plastic case with double sided tape. You should hear the battery peeling away from the cover as you are pulling on it.
- Obtain a new battery and place it into the plastic casing using double sided tape or whatever is provided with the new battery.

To reassemble your device, follow these instructions in reverse order.