



Motorola V557 Internal Speaker Replacement

This guide shows how to remove the front inside...

Written By: Matthew Sanders



INTRODUCTION

This guide shows how to remove the front inside speaker of a Motorola V557 phone.

TOOLS:

[iFixit Opening Tool](#) (1)

[Push Pin](#) (1)

[Spudger](#) (1)

[T6 Torx Screwdriver](#) (1)

Step 1 — Battery



- First, on the back of the phone find the silver button on the top left corner of the phone.
- Simultaneously push down the button and slide the back plate down to reveal the battery.

Step 2



- Grab the lower edge of the battery at the two bottom corners.
- Pull upward on the edges to remove the battery.

Step 3 — Faceplate



- Remove the four rubber stoppers from around the screen with a pin to reveal four screws.

Step 4



- Remove the four 3.8 mm T-6 Torx screws.

Step 5



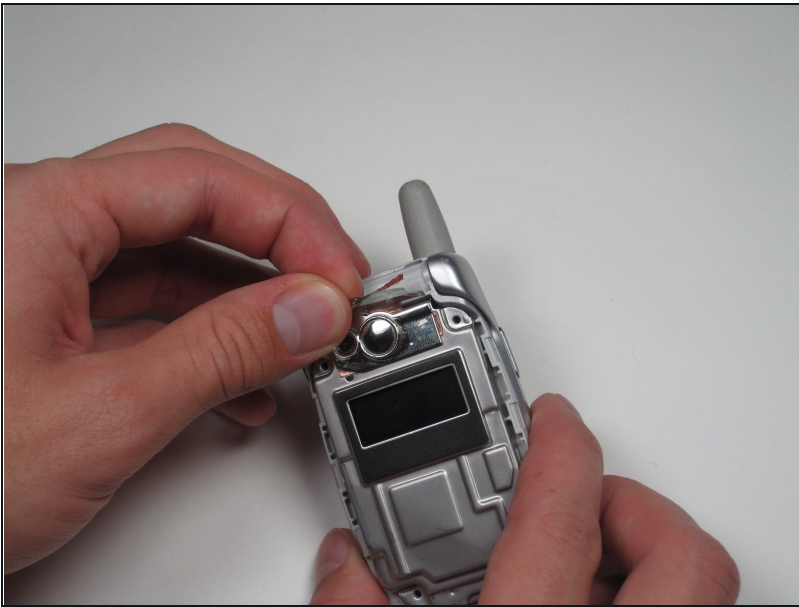
- Separate the cover from the edges using a plastic opening tool.

Step 6



- With the edges separated, close the phone and lift off the faceplate with your fingers.

Step 7 — Camera



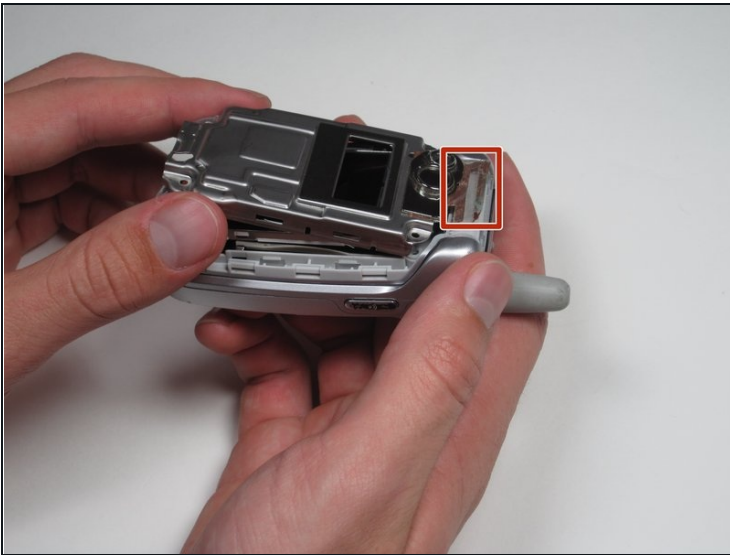
- Gently peel off the plastic film from the metal plate above the camera lens as shown.

Step 8



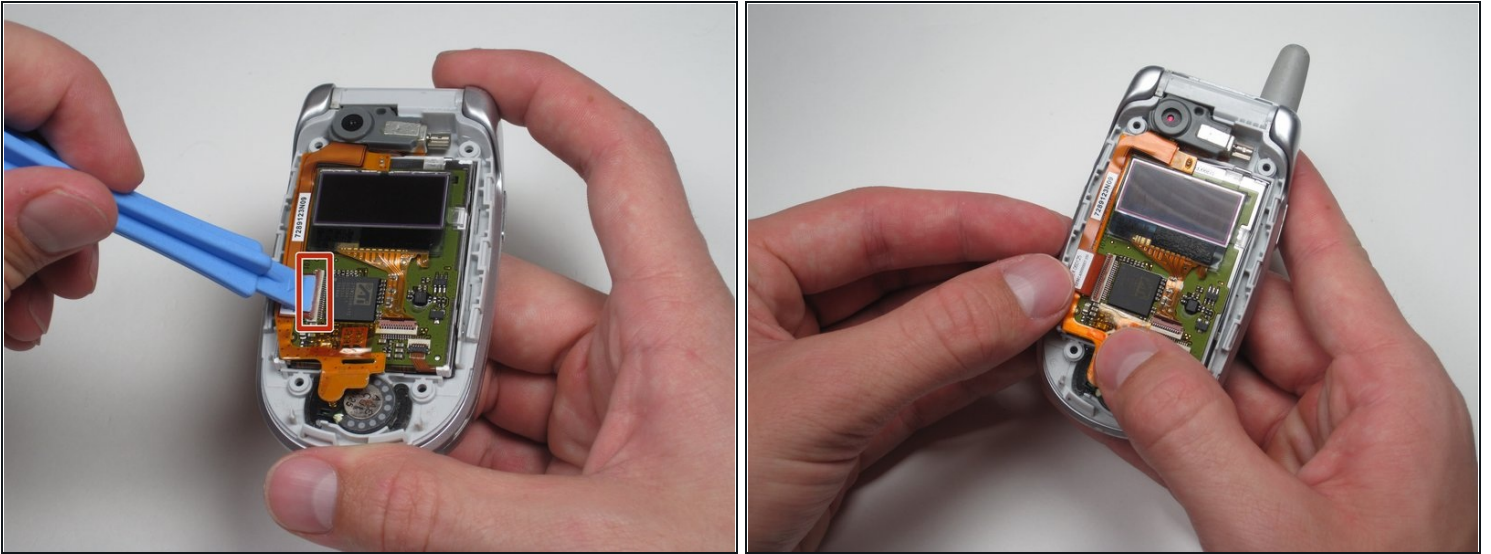
- Insert the spudger into the slots marked and gently pry upwards to remove the metal cover.
- Repeat the previous bullet for the two corresponding tabs on the opposite side of the phone.

Step 9



- Lift and peel back the tape attaching metal casing to body of the phone.
- Gently lift the metal cover and remove to expose the circuit board.

Step 10



- Using a plastic opening tool, pry or lift open the pink door shown.
- After the door is open, gently pull on the ribbon cable's corner to separate it from the board.

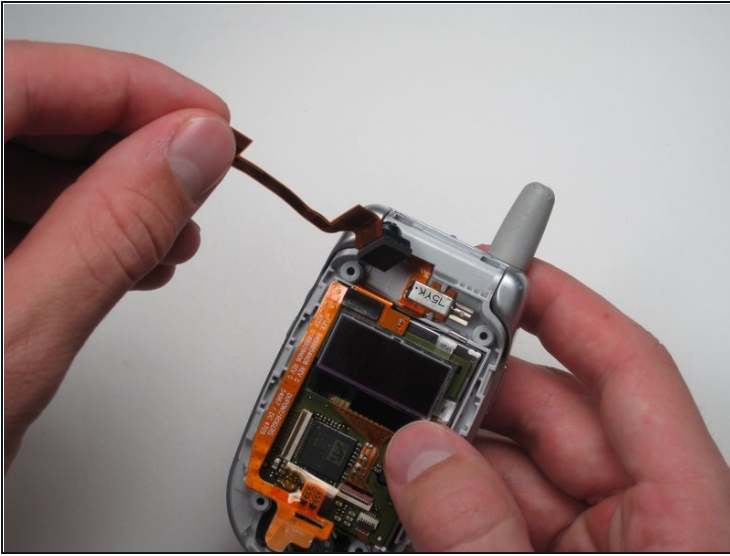
⚠ Work out the ribbon cable's end slowly and gently to avoid damaging the pink door port.

Step 11



- Use a plastic opening tool to dislodge and remove the rubber camera cover.

Step 12



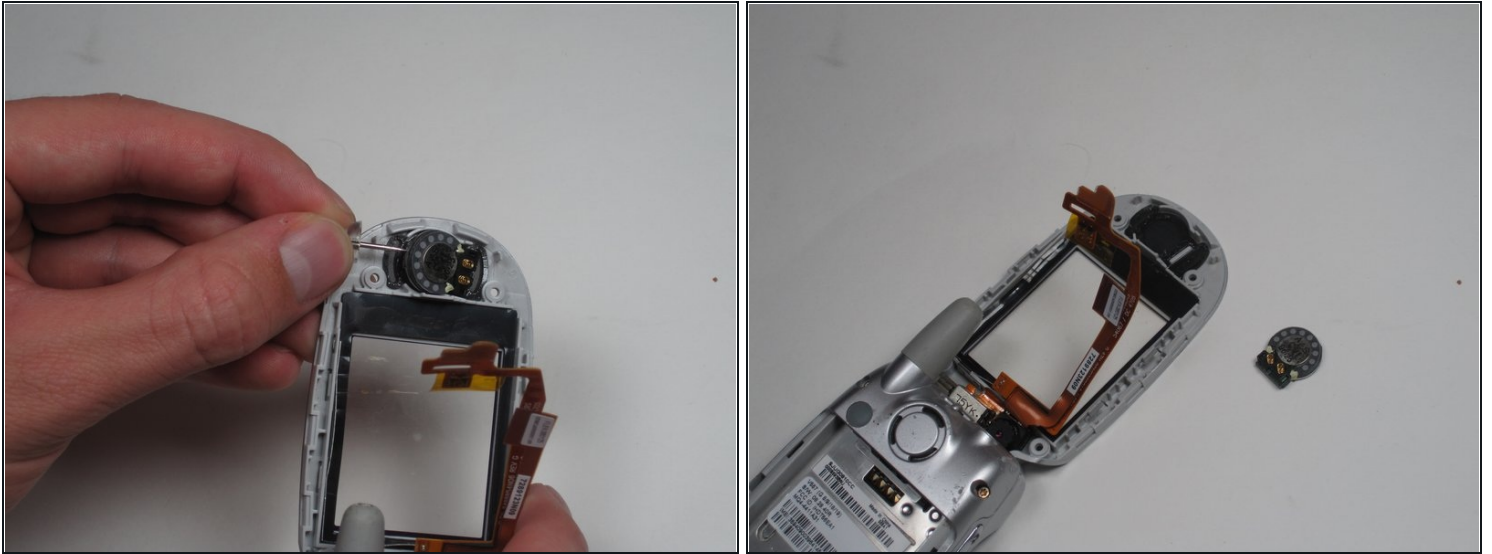
- Lift the top ribbon cable, with camera attached, up and away from the rest of the phone.

Step 13 — Screen



- Pull the ribbon cable up and out of the way to get access to the circuit board-screen unit.
- Using a plastic opening tool, gently pry and remove the circuit board-screen unit in both screens.

Step 14 — Internal Speaker



- Pry the speaker out of the case by wedging a pin under the wire mesh.
- ① The speaker is glued to the case. It will take some effort to remove, but don't worry, it is not fragile.

To reassemble your device, follow these instructions in reverse order.