



Disassembling TomTom One XL Back Panel

Remove the TOMTOM XL back panel to get to other components such as the speaker, battery, LCD Screen, and Power/Reset Button.

Written By: DeVhan



INTRODUCTION

This guide will show you how to partially disassemble the TomTom One XL.



TOOLS:

- [T8 Torx Screwdriver](#) (1)
 - [Spudger](#) (1)
 - [Tweezers](#) (1)
-

Step 1 — Back Panel



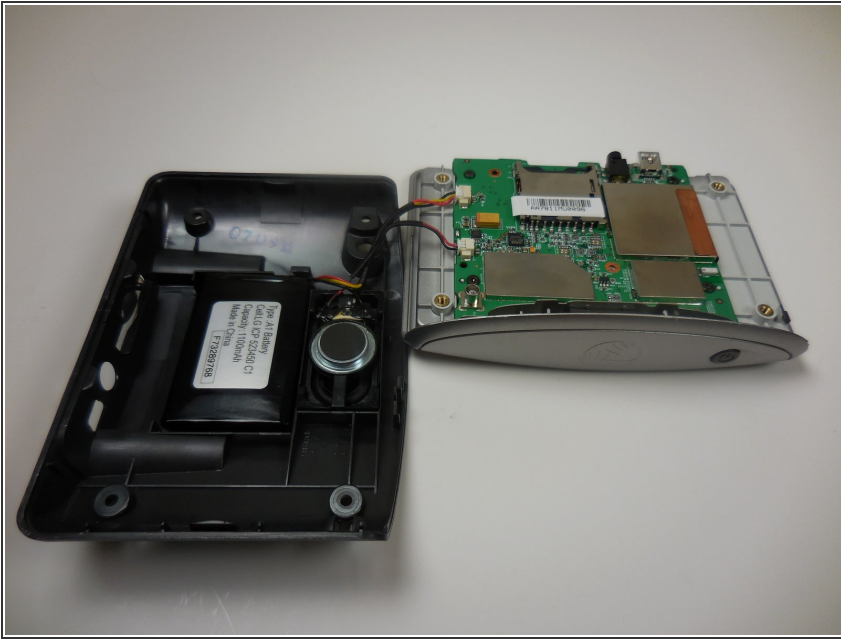
- Remove the 4 .4mm screws on the back of the device.

Step 2



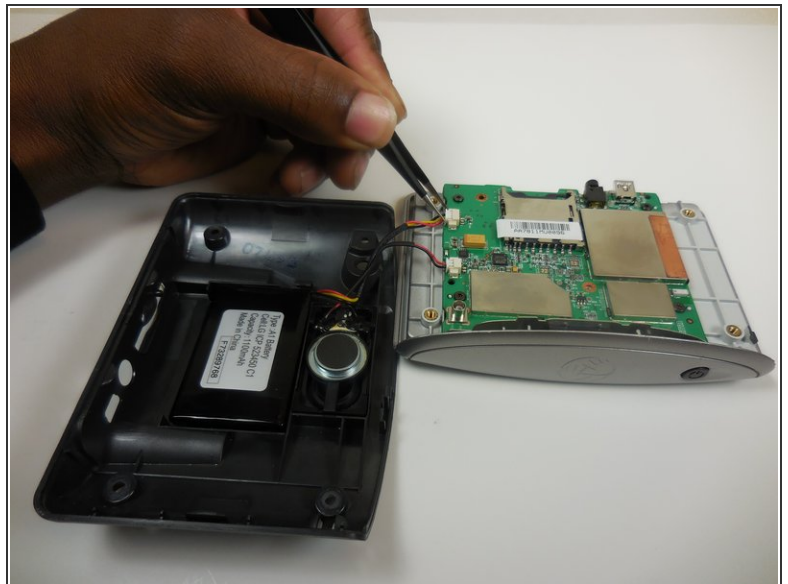
- Using the palate knife tool, pry the back from the LCD screen. Apply a moderate pressure to separate them.
- ⓘ You can rotate TOMTOM XL to make prying back off easier.
- ⚠ Be careful not to injure the two wires connecting the pieces.

Step 3



- After prying both halves apart, they will be connected by two wires.
- Carefully set the two halves next to each other making sure not to stress or damage the wires.

Step 4



- Using the tweezers separate the wires connecting the battery and speaker to the mother board.

⚠ Be gentle while pulling the wires out, the plugs are easily injured.

To reassemble your device, follow these instructions in reverse order.