



# Hisense Sero 8 Battery Replacement

This guide demonstrates how to replace the battery in the Hisense Sero 8.

Written By: Keanu



---

## INTRODUCTION

After extended use, the battery may not hold its charge anymore. Replacing the battery can solve this issue.

---



### TOOLS:

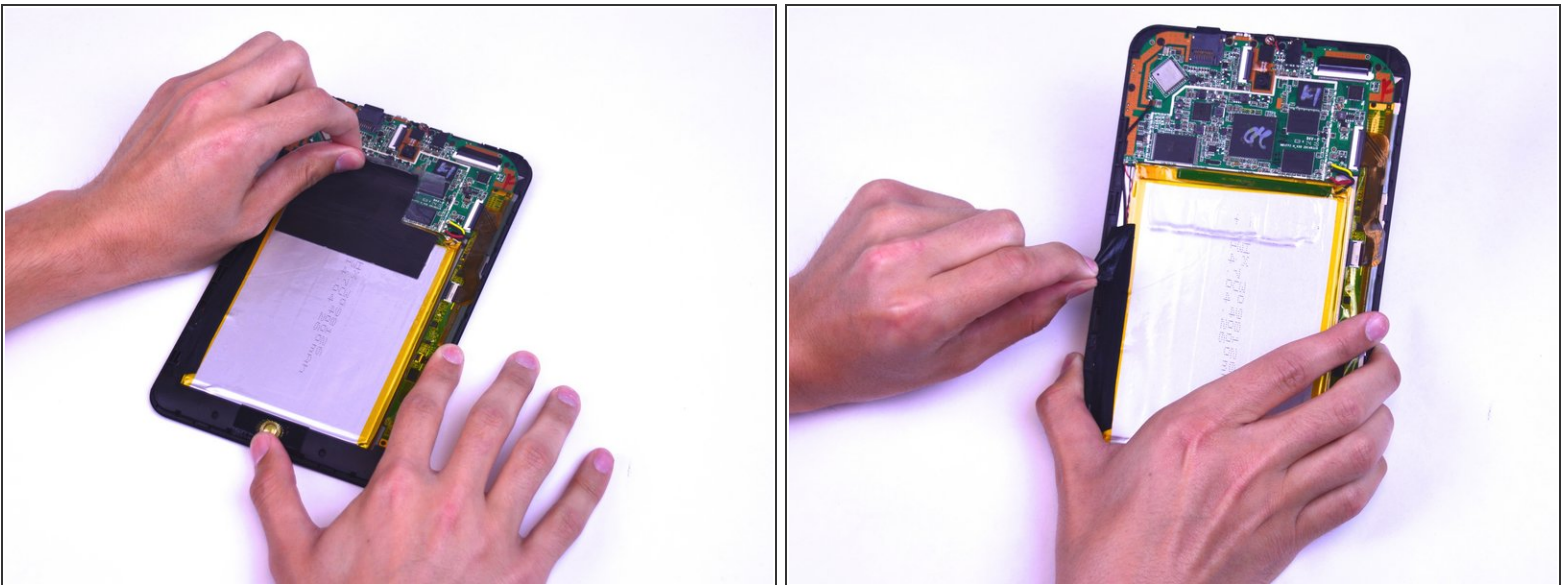
- [iFixit Opening Tools](#) (1)
  - [Spudger](#) (1)
-

## Step 1 — Battery



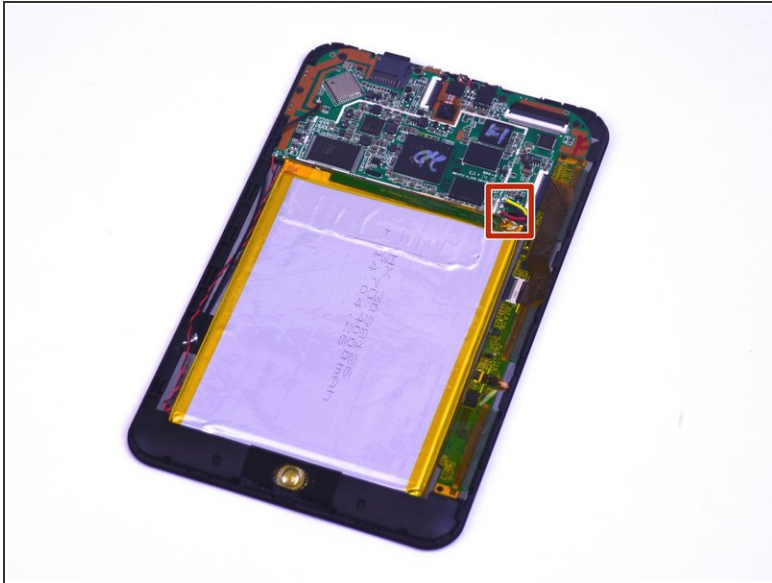
- Remove the back cover of the device using a combination of both plastic opening tools.
- Use your plastic opening tool pry open a corner of the device, then continue down the side of the device with the tool to completely open the device.

## Step 2



- Remove the black tape that is located to the left of the device as well as the clear tape directly below the camera.

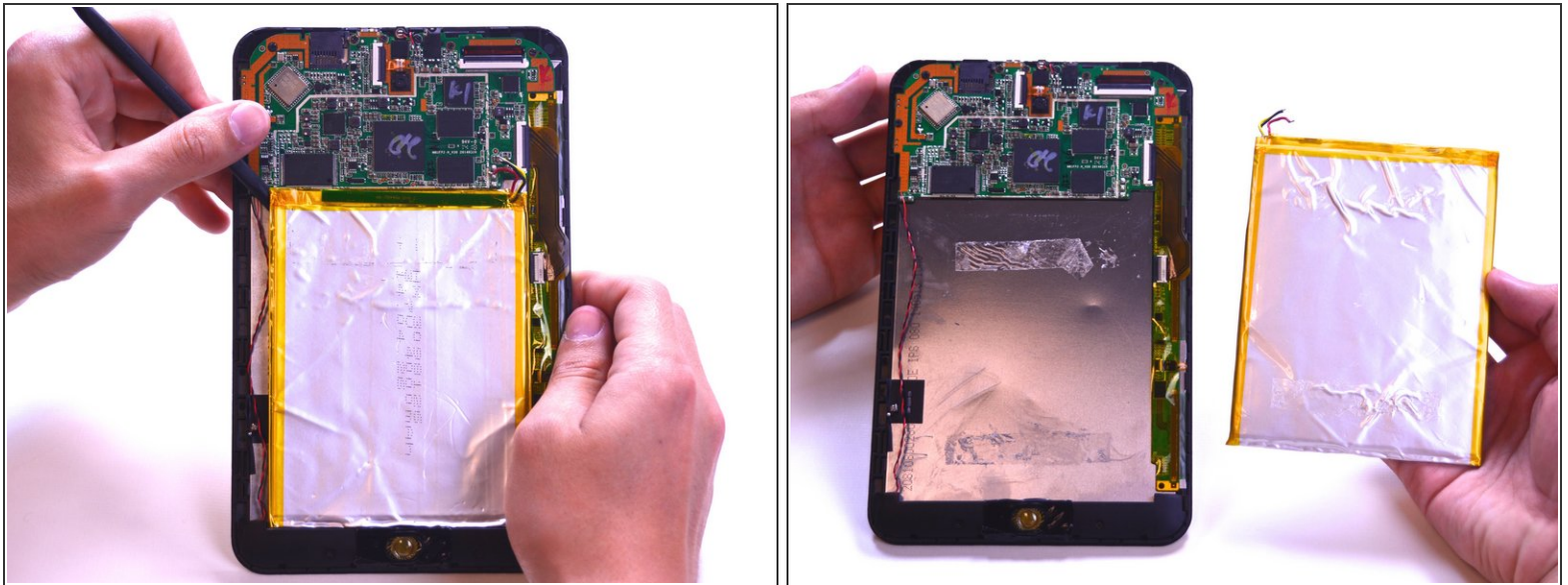
## Step 3



- Desolder the red, black, and yellow wires to properly remove the motherboard. Take a look at this [guide](#) to learn how to solder and desolder connections.



## Step 4



- Using the spudger, carefully remove the battery by lifting up one corner and pushing the spudger underneath the battery.
- Now carefully lift the battery off the device.
- ⓘ There is double-sided tape that affixes the battery to the device.
- ⚠ Be careful to not puncture the battery. This could be a safety hazard.

To reassemble your device, follow these instructions in reverse order.