



Samsung PL200 LCD Screen Replacement

A guide is for replacing the LCD screen on the Samsung PL200 digital camera.

Written By: Jacob Presnell



INTRODUCTION

Replace a broken, cracked or frozen screen on your Samsung PL200 digital camera. Tools are required to access interior camera components.



TOOLS:

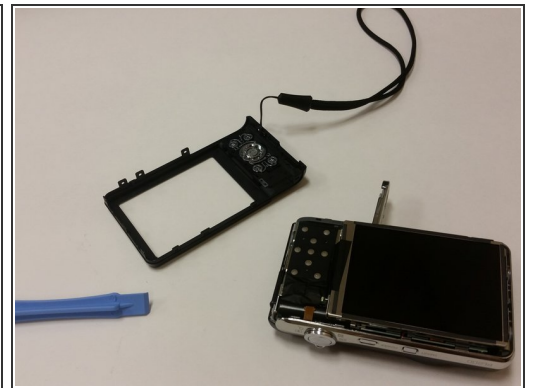
- [Phillips #000 Screwdriver](#) (1)
 - [iFixit Opening Tools](#) (1)
-

Step 1 — LCD Screen



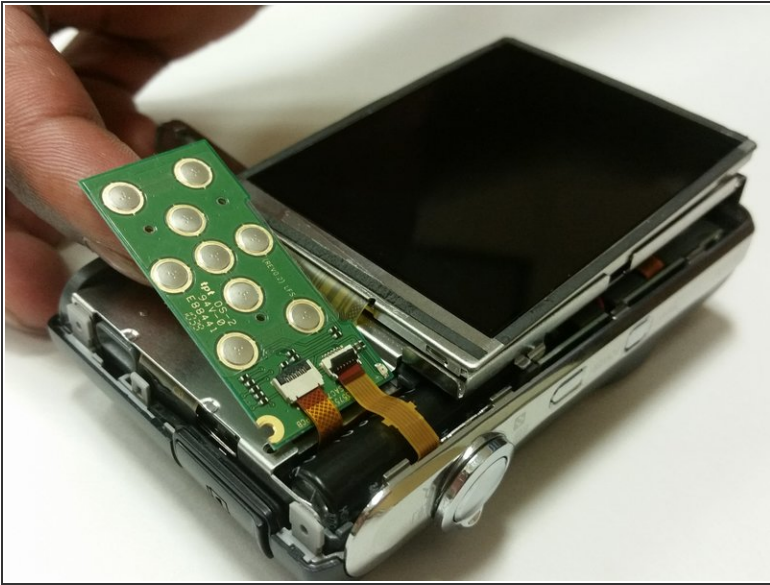
- Remove the six 3 mm external screws from the camera base using the Phillips #000 screwdriver.

Step 2



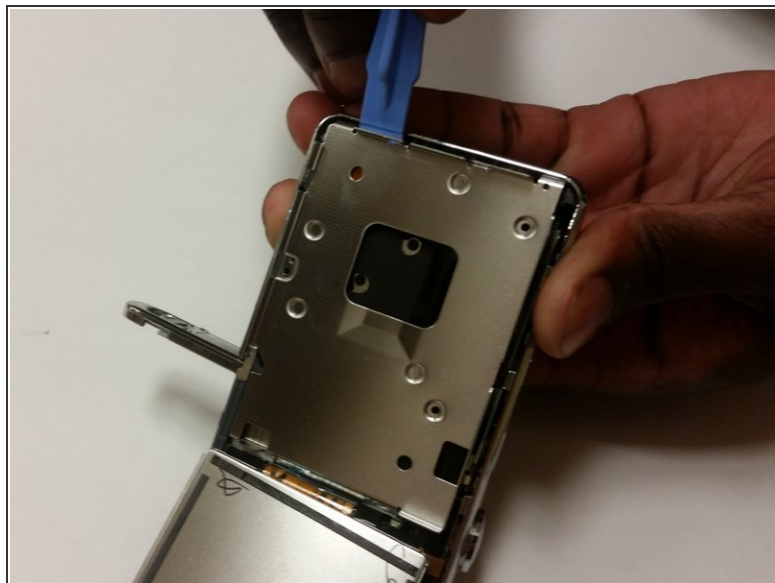
- Use the plastic opening tools and your fingers to pull the external cover off.

Step 3



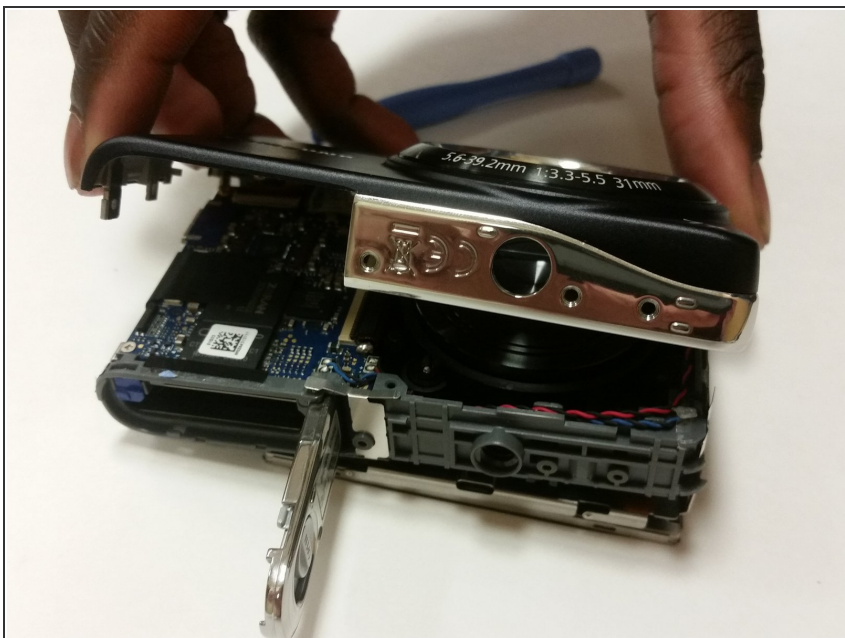
- Remove the 3 mm screw holding the circuit board.
- Use a pair of tweezers to detach the two ribbon cables connecting the circuit board to the camera.
- Remove the circuit board.

Step 4



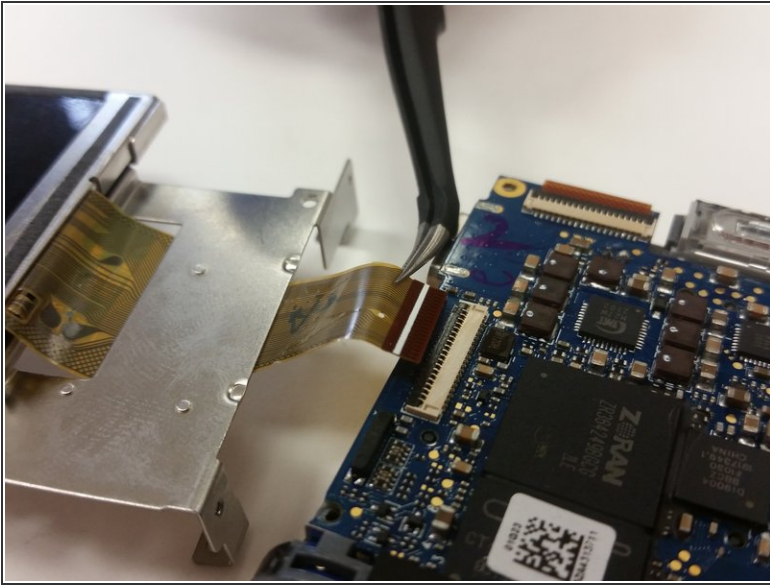
- Flip the LCD screen forward and remove the two 3 mm screws holding the metal midframe using a Phillips #000 screwdriver.
- Remove the midframe using an opening tool.

Step 5



- Remove the front cover. It will come off fairly easily.

Step 6



- Lift the black strip and the ribbon will easily come out.
- After doing this, the LCD screen will be separated from the camera.

To reassemble your device, follow these instructions in reverse order.