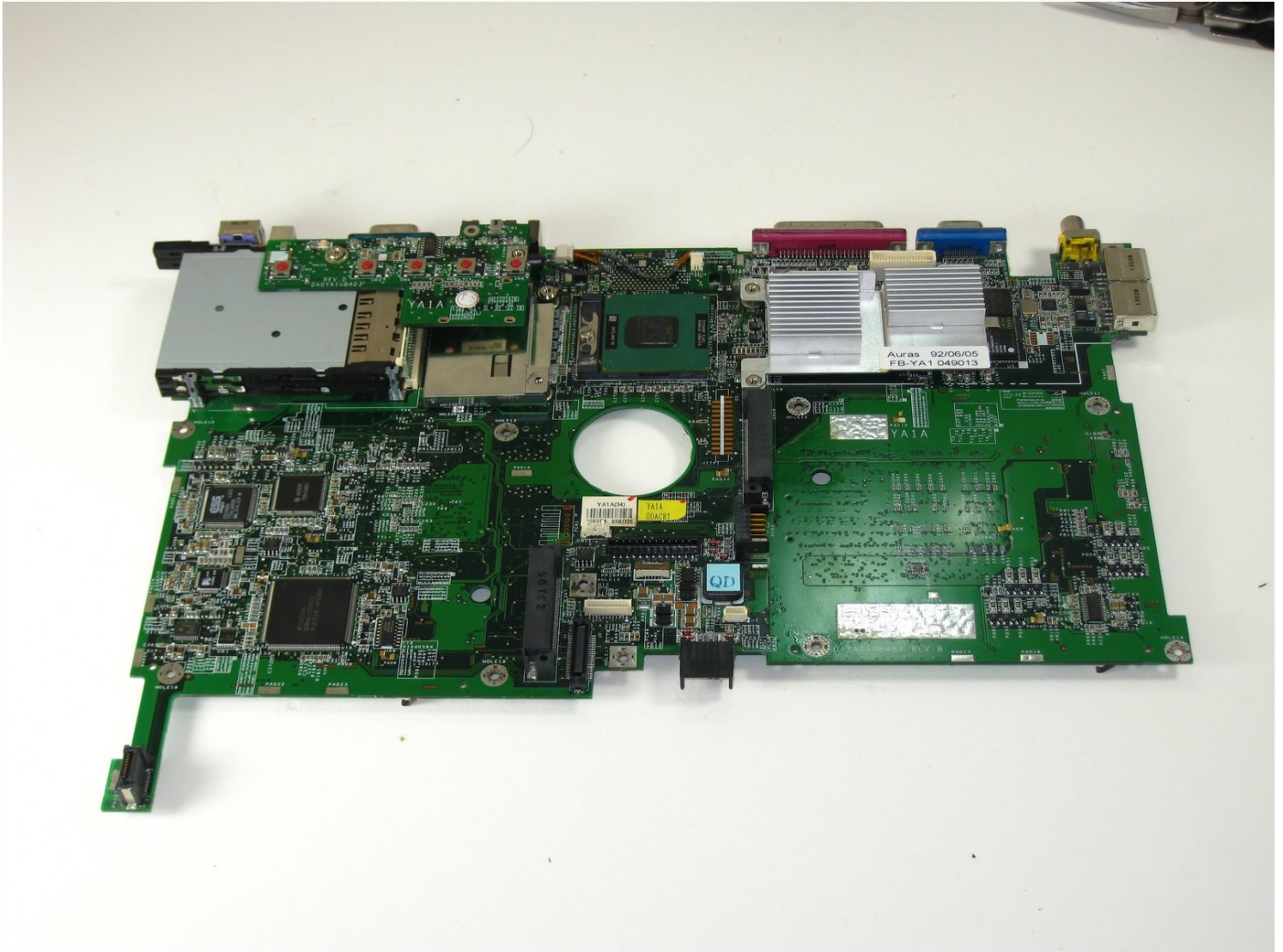




Gateway 600YG2 System Board Replacement

removal of the system board

Written By: Elizabeth Mazer



INTRODUCTION

removal of the system board

TOOLS:

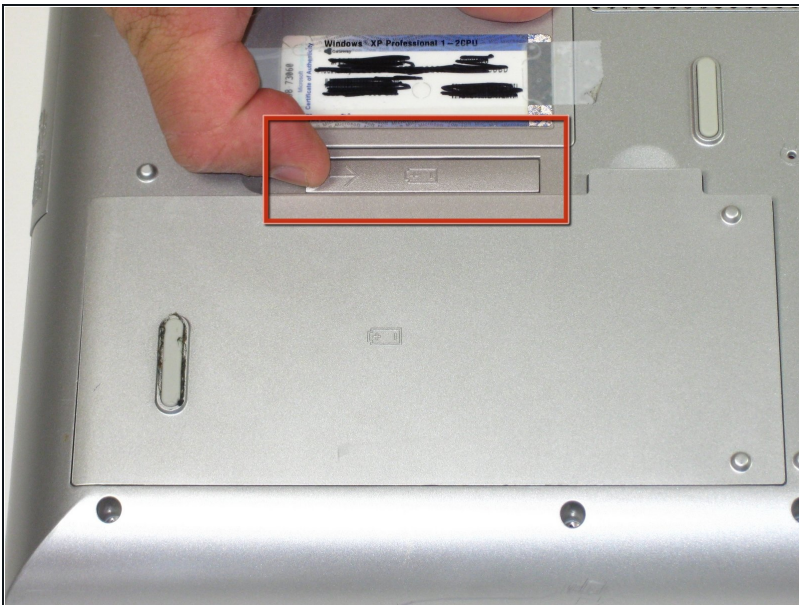
64 Bit Driver Kit (1)

5mm Nut Driver (1)

Phillips #0 Screwdriver (1)

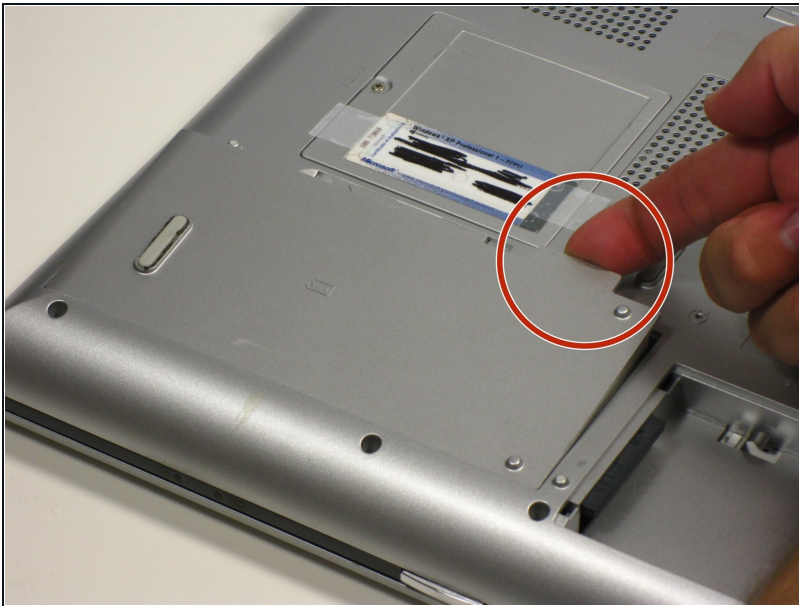
Spudger (1)

Step 1 — Battery



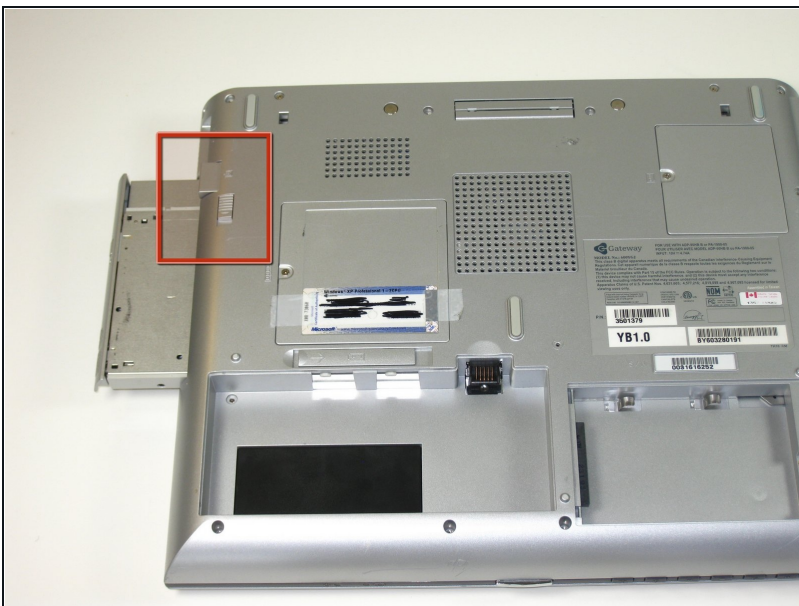
- Flip the laptop over.
- Slide the battery release tab to the right with your index finger to open the battery cover.

Step 2



- Remove the battery cover using the tab on the right side.
- Take the battery out with your index finger.

Step 3 — CD/DVD or Floppy drives



- Slide the release and push the button to eject the drive.
- Remove the drive.

⚠ When reinserting the drives, be sure to put them in the original slot to avoid interface conflicts.

Step 4 — Hard Drive



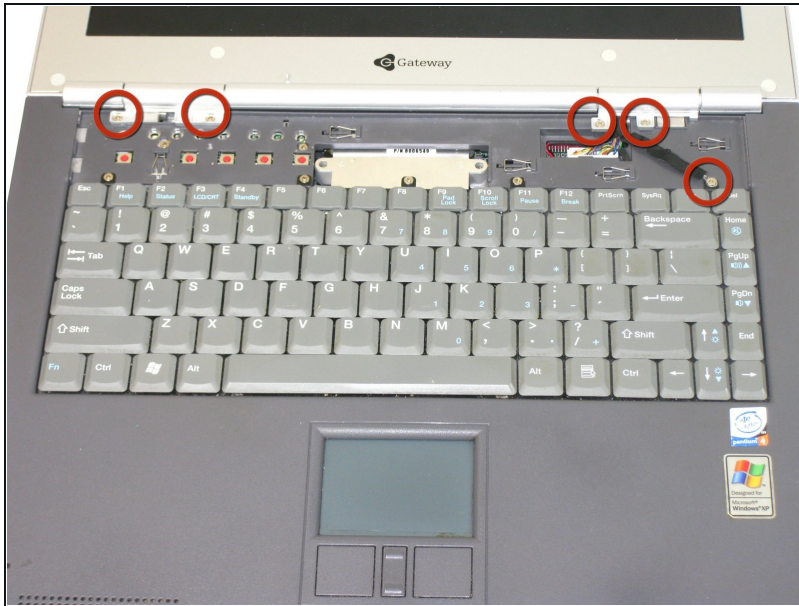
- Unscrew 1 captive screw holding hard drive cover on.
- slide hard drive to the right and remove.
- for detailed pictures and info go to [Gateway Support](#)

Step 5 — Power Button Panel



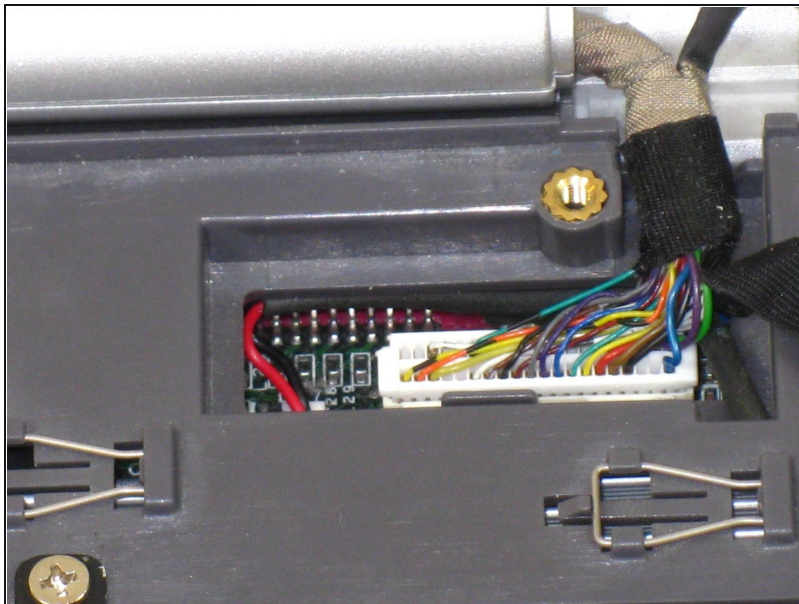
- Insert the spudger between the "sysrq" and "ins" keys.
- Gently pry free the power button panel above the keyboard, beginning from the right and moving to the left.

Step 6 — LCD



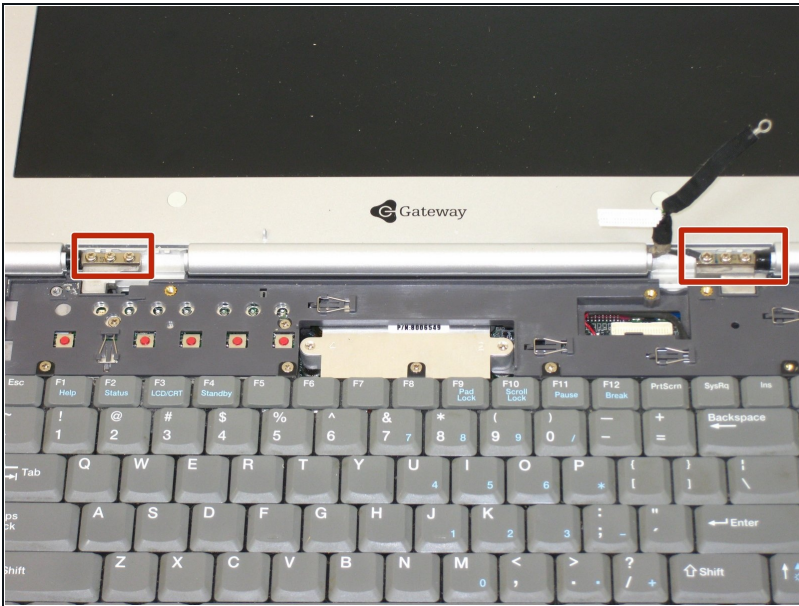
- Remove the five screws with a Phillips #0 screwdriver.
- ⓘ The LCD hinge covers are held in place by four screws. One screw is for grounding the LCD.
- Lift the hinge covers along the outer edges with the spudger until they are released.

Step 7



- Gently unplug the LCD from the system board.

Step 8



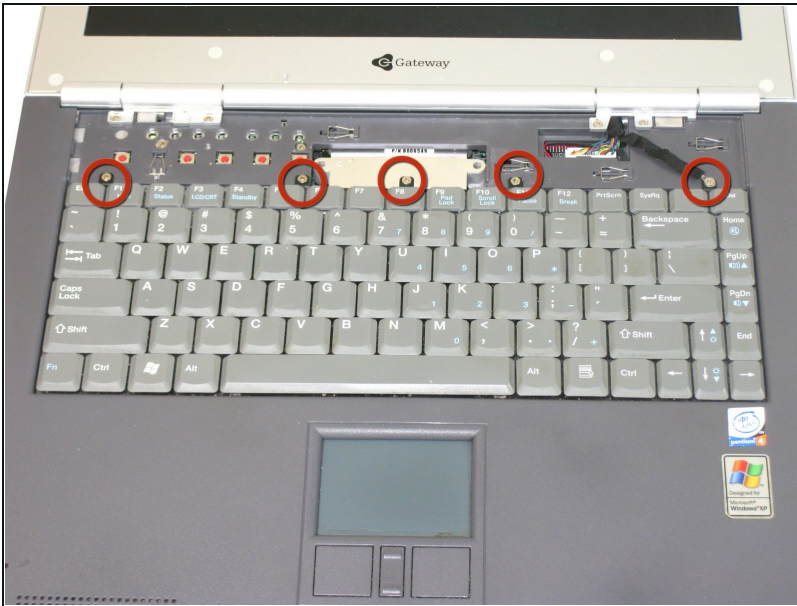
- Using the Phillips #0 screwdriver, remove six screws that hold the LCD to the hinge.

Step 9



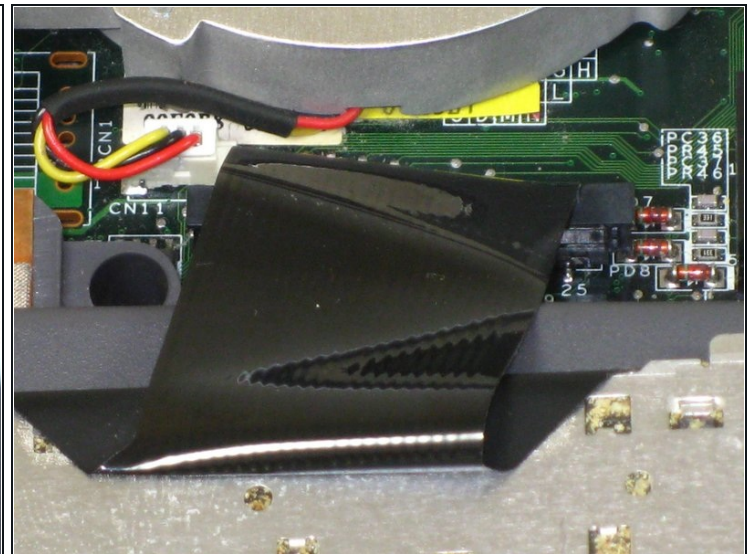
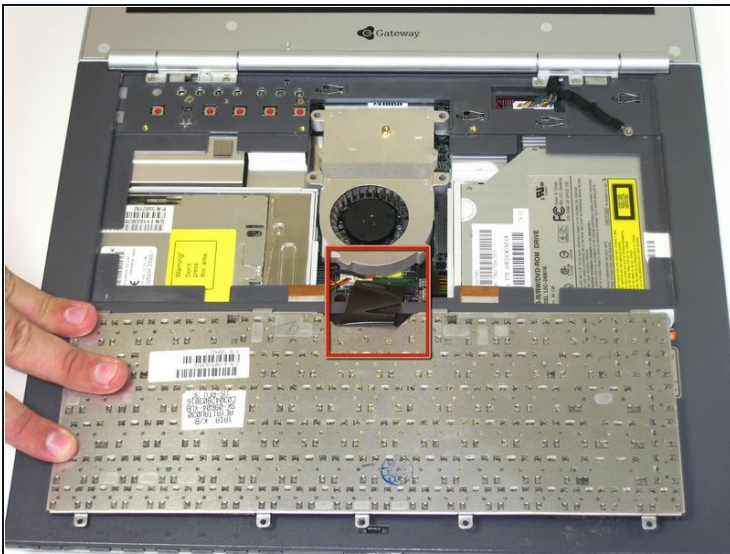
- ① Check if any cables are still connected before pulling out the LCD.
- Remove the cable by gently pulling it out while holding down the LCD.

Step 10 — Keyboard



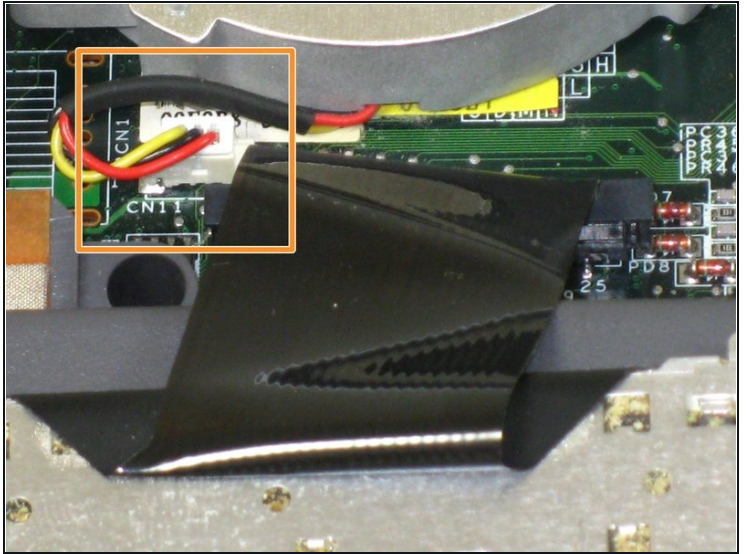
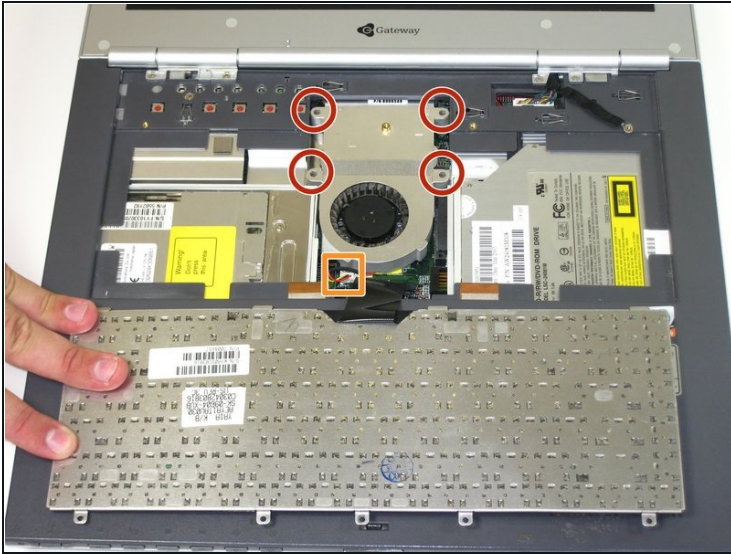
- Remove the 5 screws holding the keyboard in place.

Step 11



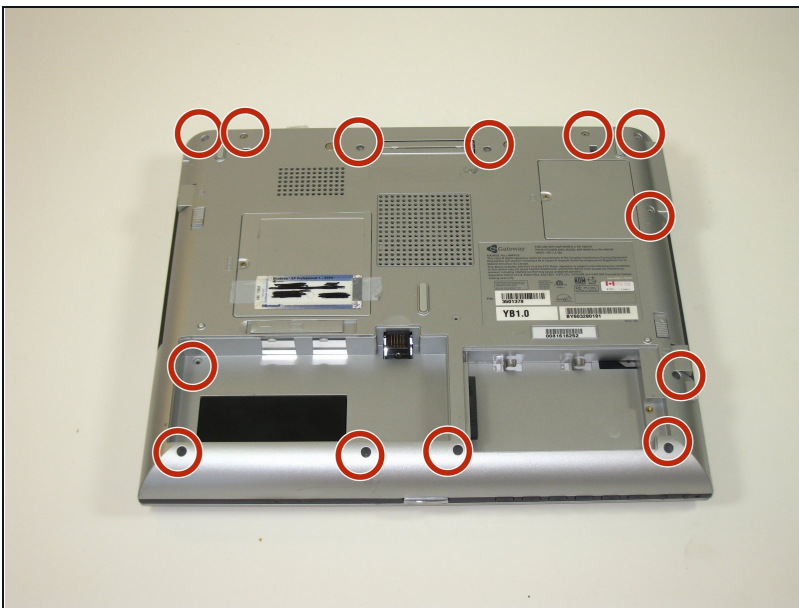
- ⚠ Potential for device damage: When lifting the keyboard out, do not lift the keyboard up. Only fold back along the space bar edge.
- ⚠ Potential for device damage: Do not pull the black cable by the ribbon section. Only pull it from the connector itself.
- Follow the black ribbon cable to the connector and gently pull straight up.

Step 12 — System Fan



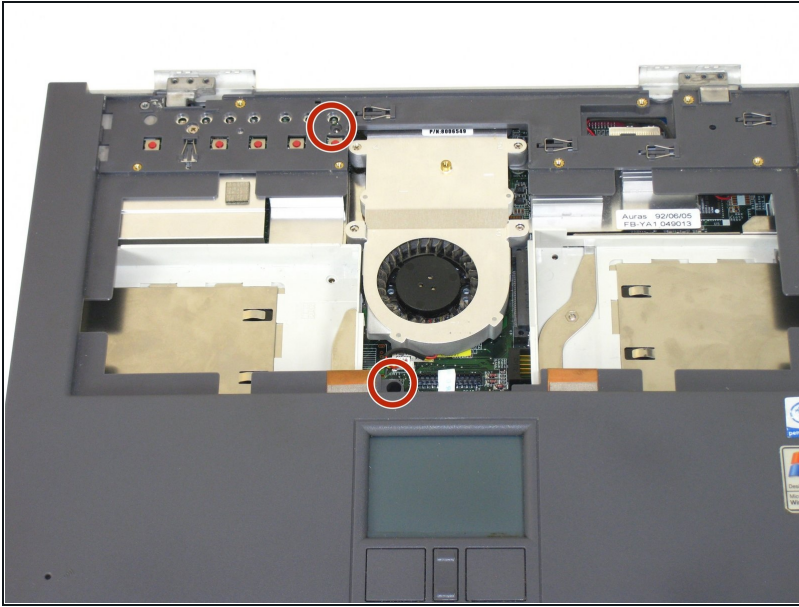
- Unscrew the four captive screws.
- Unplug the fan from the system and pull it out. The fan unit should slide forward before coming free.

Step 13 — Top Case



- Use a Phillips #0 screwdriver to remove the thirteen screws from the bottom of the computer.

Step 14



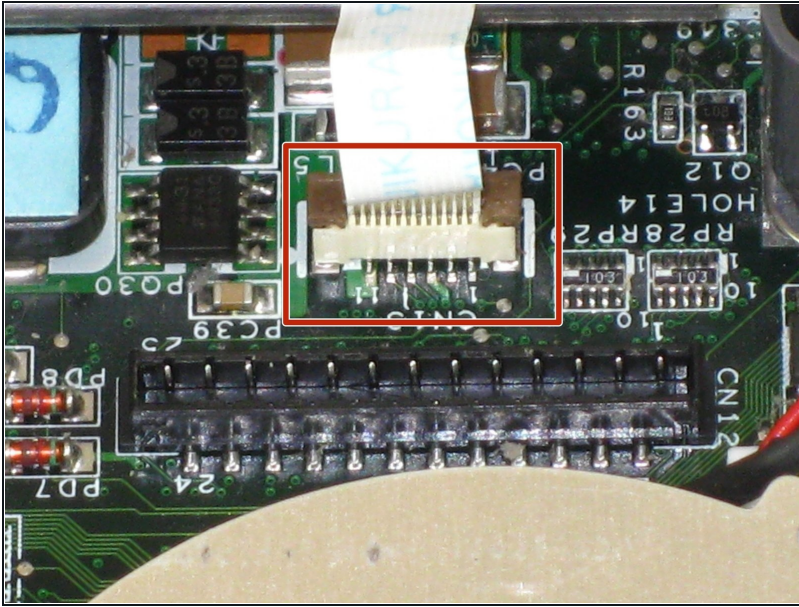
- Remove the two indicated screws.

Step 15



- Remove the four screws from the back of the case.

Step 16



⚠ Potential for device damage:
Failure to properly do this step
will damage your mouse pad
ribbon.

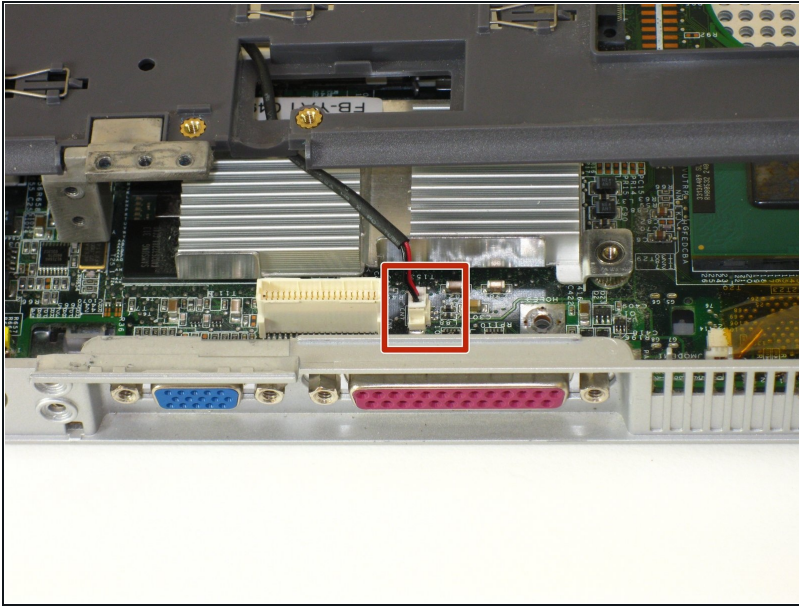
- Lift the plug holding the mouse ribbon about 1/16 inch or until it stops
- Remove the ribbon.

Step 17



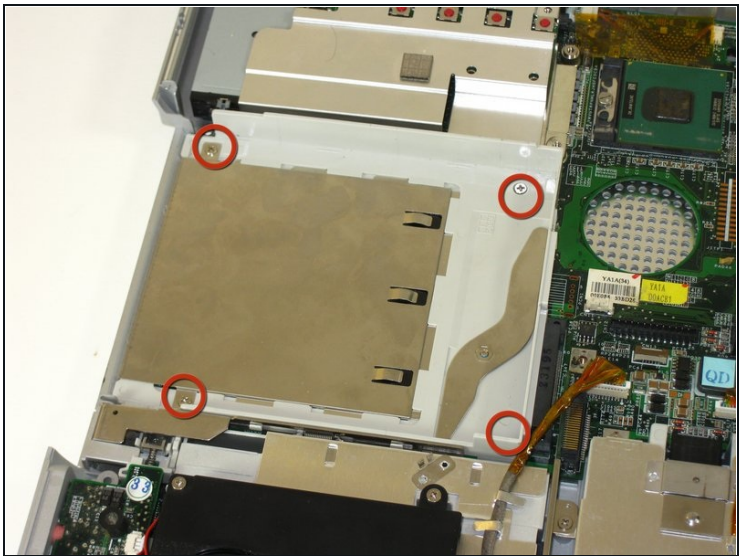
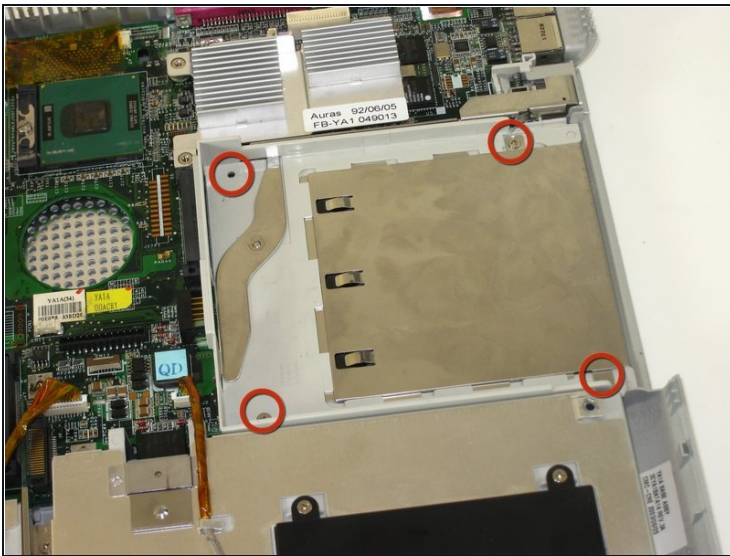
- Insert your spudger between the upper and lower case at the drive bay closest to the battery.
- Carefully and slowly go around the entire case, unseating all plastic clips holding the upper and lower cases together.

Step 18



- Lift the upper case about 1/4 inch.
- At the rear of the case is one last connecting wire. Unplug it and remove the upper case.

Step 19 — System Board



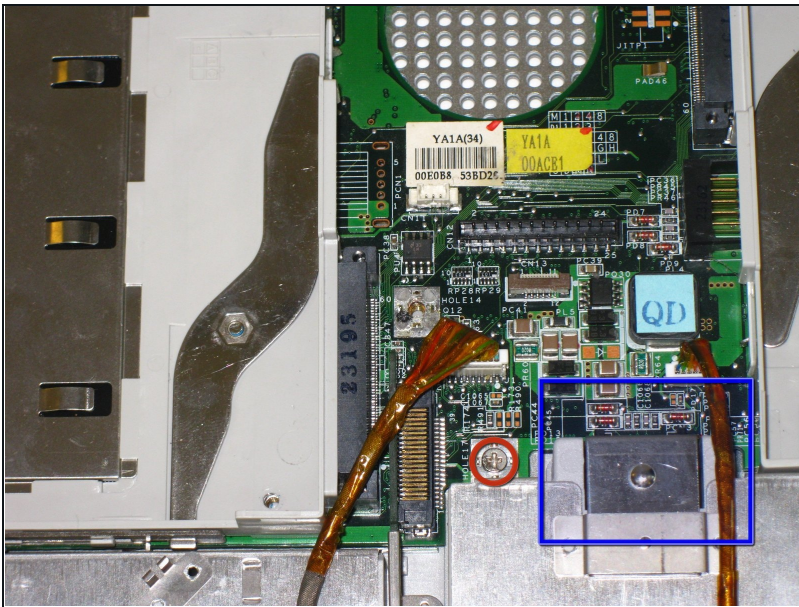
- Remove 8 screws from drive bays.

Step 20



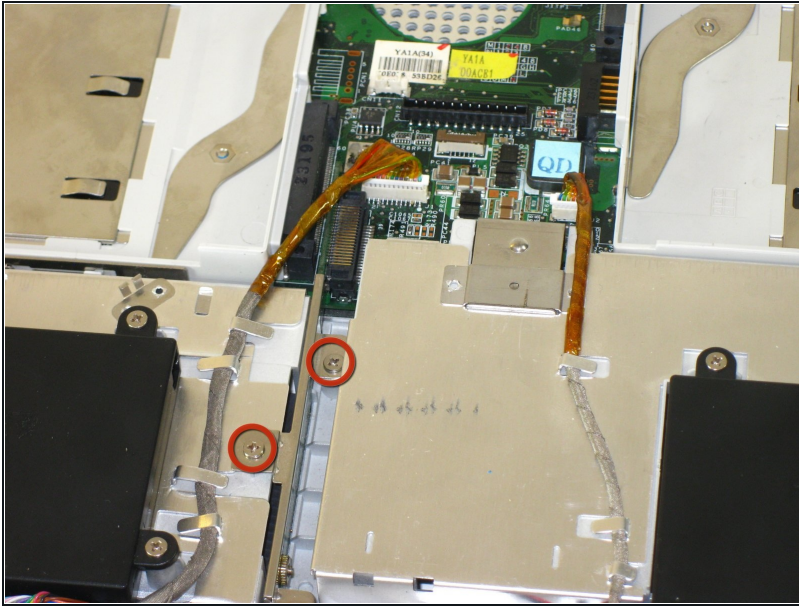
- Remove 6 5mm hex nuts from back of laptop.

Step 21



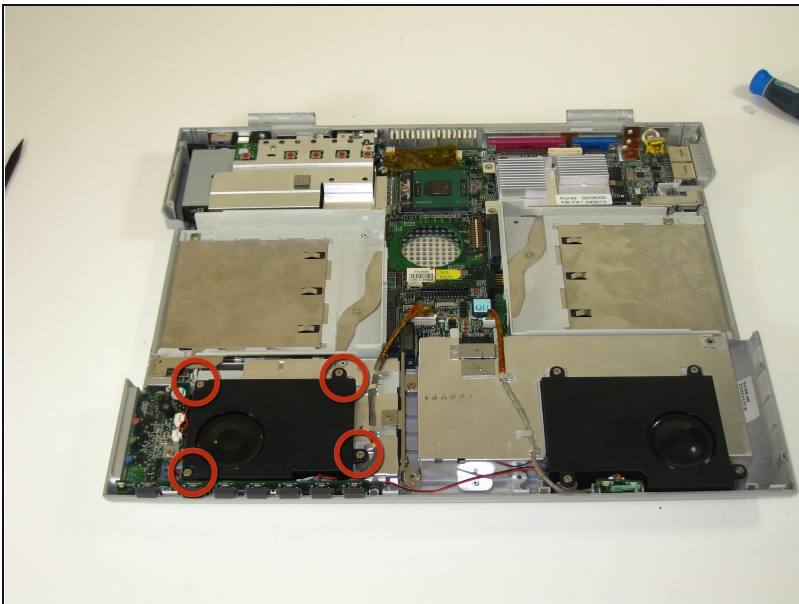
- Remove screw
- Slide metal clip into battery bay

Step 22



- Remove two screws.
- Hard drive extension should lift out from system board.

Step 23



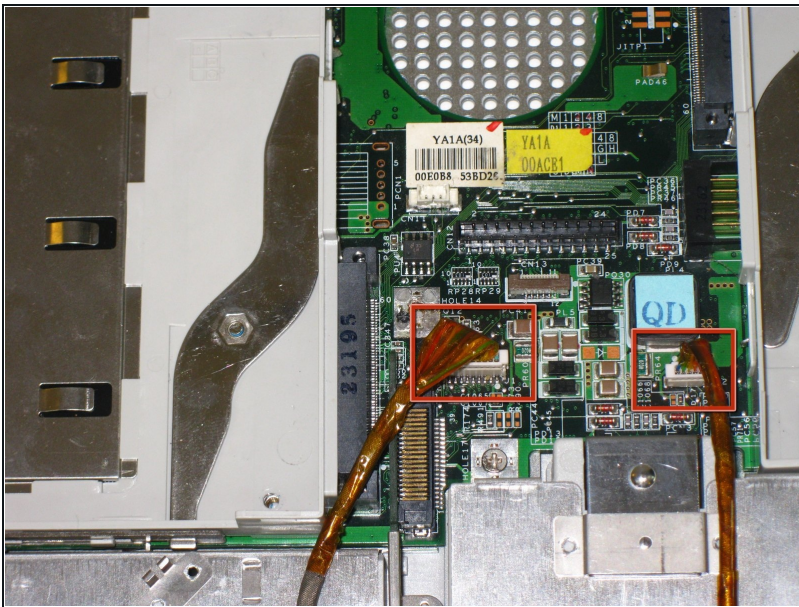
- Remove 4 screws holding left speaker for ease of access to connectors and external sound board.

Step 24



- Remove screw and unplug speakers from external sound board.
- Lift external soundboard away from system board and remove.

Step 25



- Unplug audio DJ
- Unplug System status light board
- Starting on the right side of case gently lift and slide system board till it comes free of lower case.

To reassemble your device, follow these instructions in reverse order.