



# TomTom One XL Charging Port Replacement

If the charger port in the TOMTOM XL breaks off or malfunctions this guide will show you how to replace or reconnect it.

Written By: DeVhan



---

# INTRODUCTION

This guide will show you how to replace or reconnect the charging port to the motherboard.

---



## TOOLS:

- [iFixit Opening Tools](#) (1)
  - [Portable Soldering Iron](#) (1)
-

## Step 1 — Back Panel



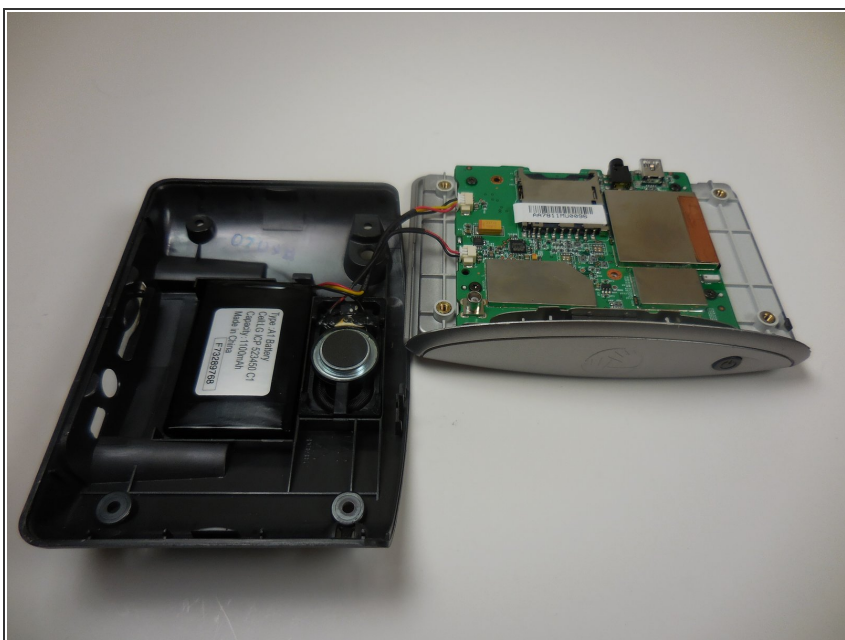
- Remove the 4 .4mm screws on the back of the device.

## Step 2



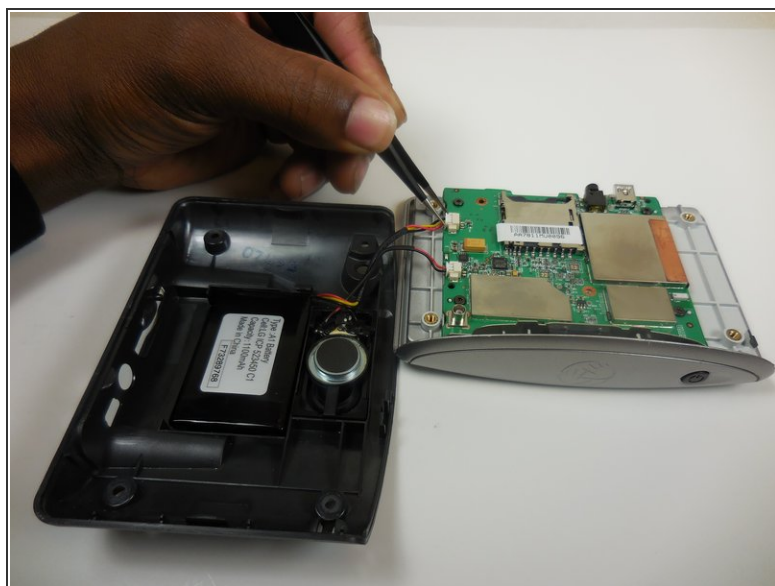
- Using the palate knife tool, pry the back from the LCD screen. Apply a moderate pressure to separate them.
- ⓘ You can rotate TOMTOM XL to make prying back off easier.
- ⚠ Be careful not to injure the two wires connecting the pieces.

## Step 3



- After prying both halves apart, they will be connected by two wires.
- Carefully set the two halves next to each other making sure not to stress or damage the wires.

## Step 4

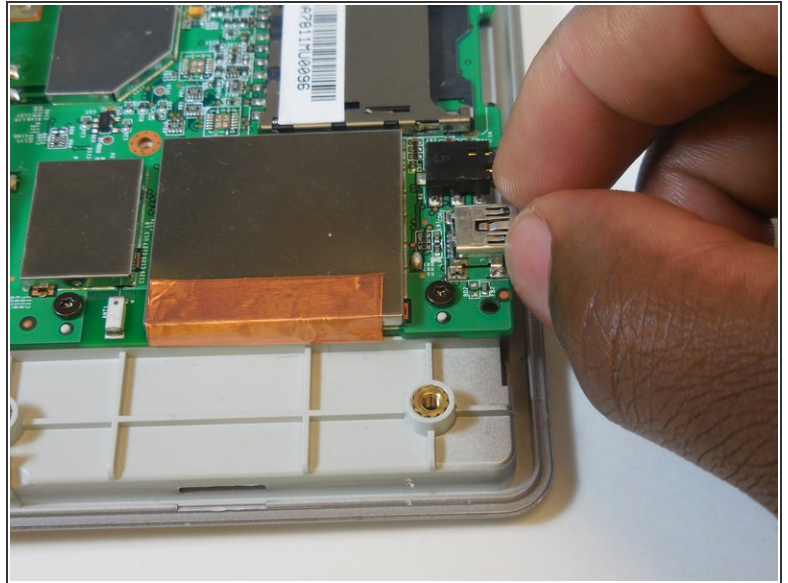
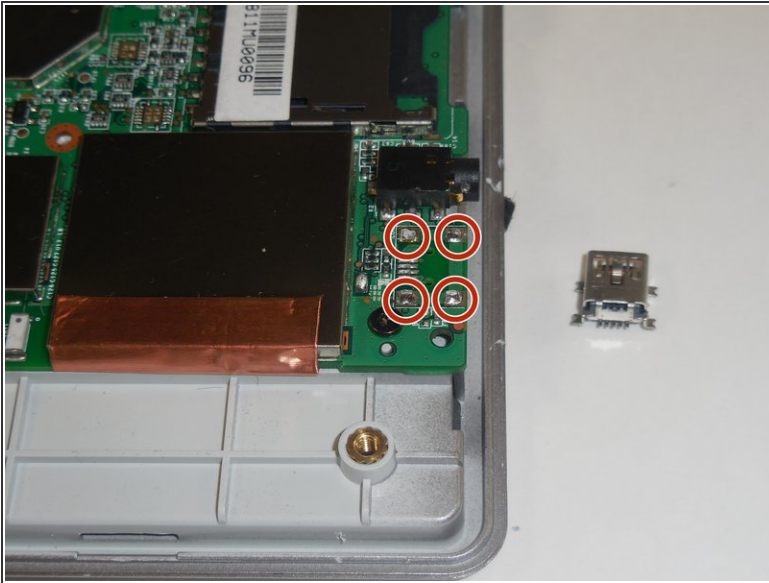


- Using the tweezers separate the wires connecting the battery and speaker to the mother board.

⚠ Be gentle while pulling the wires out, the plugs are easily injured.



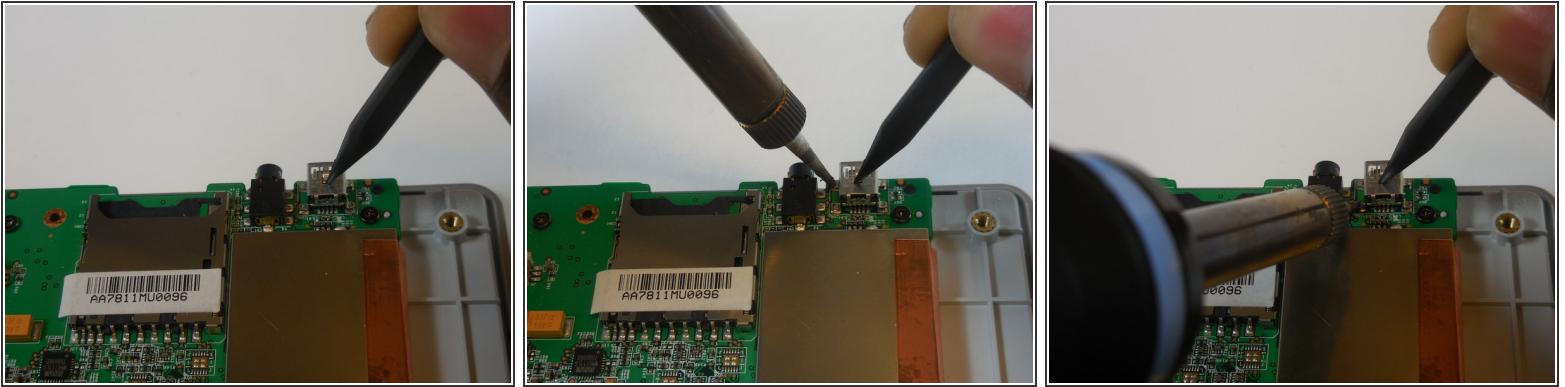
## Step 5 — Charging Port



- If this is your first time solder then refer to [iFixit's safety guide](#).
- Locate where the charger port goes on the circuit board.
- Locate the four connector on circuit board and charger port which need to be soldered.

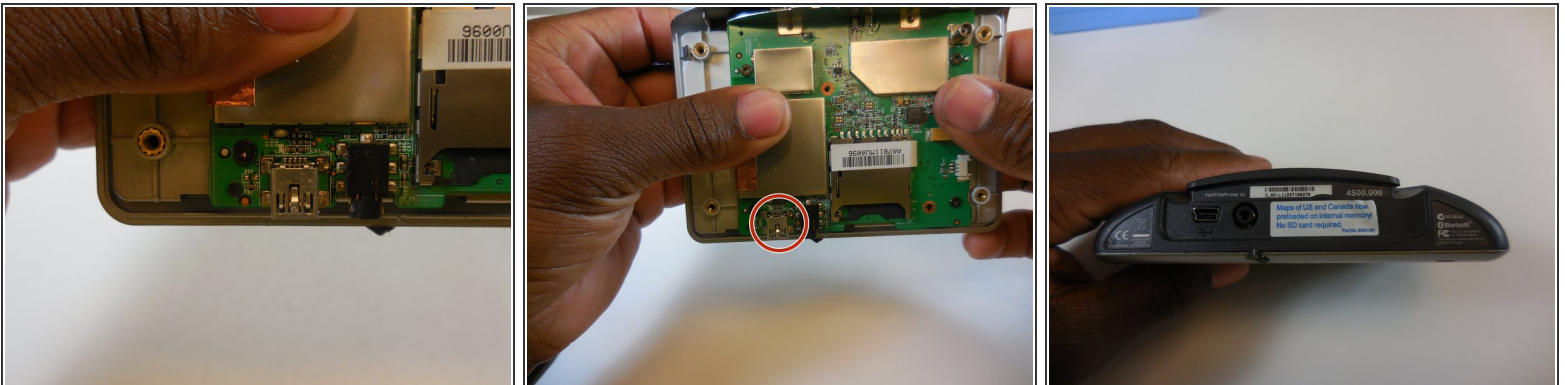
⚠ Don't forget, the soldering iron is hot.

## Step 6



- Using your plastic opening tool press down firmly on the top of the charger port.
  - While the soldering iron is hot press it again the four corners of the charger port.
- ⚠ Don't touch the charger port with your hands, it may have heated up during soldering.

## Step 7



- Let the circuit board and charger port cool down for a few minutes.
  - Lift circuit board up, after making sure its cool, to see if four corners are all connected.
- i** Plug in the charger to make sure it works, if not repeat steps and make sure the port is making a clean connection.

To reassemble your device, follow these instructions in reverse order.