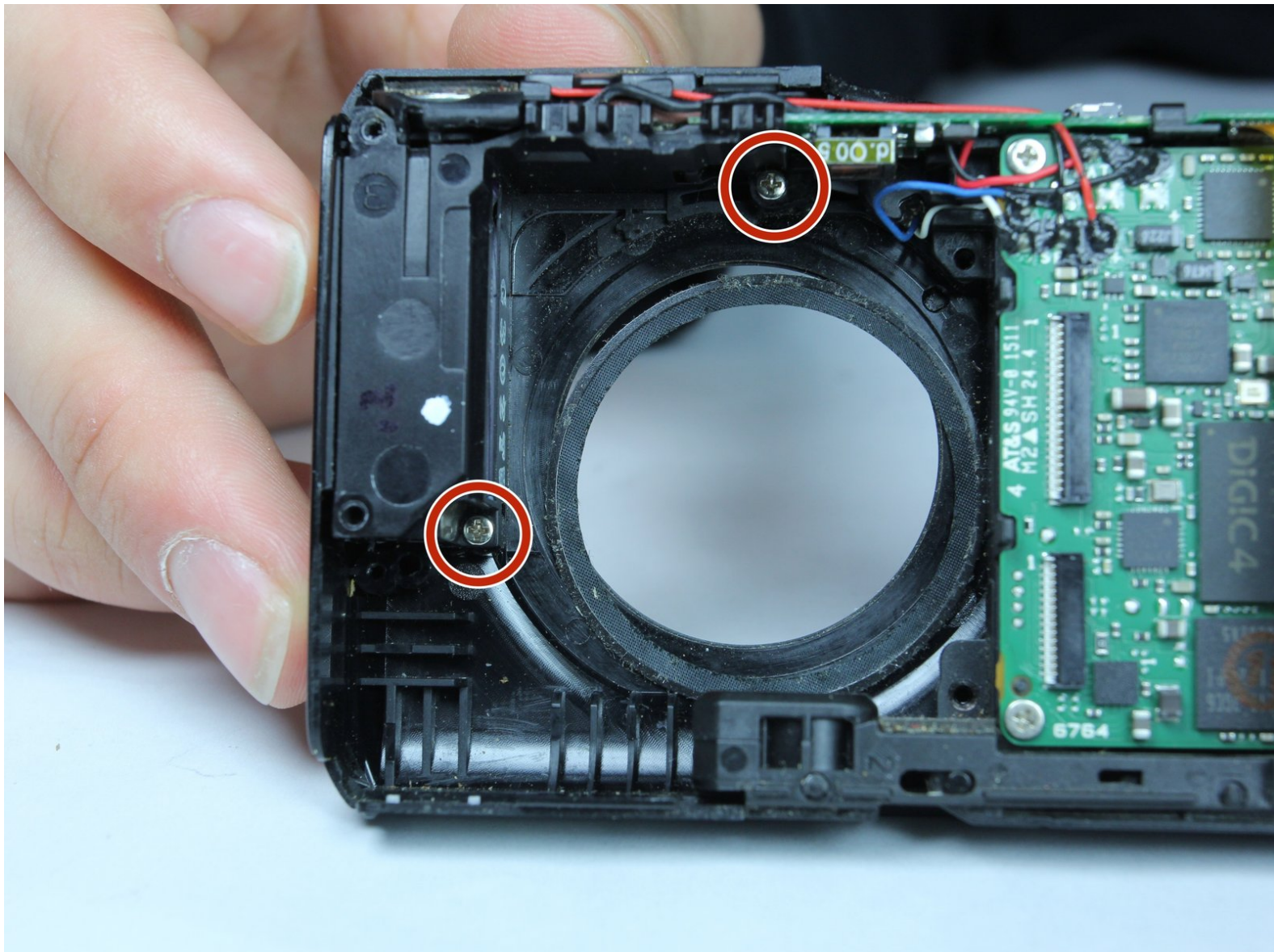




Canon PowerShot A2200 Front Cover Replacement

This guide will show you how to remove the front cover for replacement.

Written By: Benjamin Gee



INTRODUCTION

This replacement guide requires you to use a Phillips head screwdriver to remove the front cover of the device.



TOOLS:

- [Magnetic Project Mat](#) (1)
 - [Phillips #00 Screwdriver](#) (1)
 - [iFixit Opening Tools](#) (1)
-

Step 1 — Back Cover



- First, remove the batteries and memory card.
- Remove the 5.0 mm black screw with a Phillips #00 screwdriver.
- Remove the 5.0 mm silver screw with a Phillips #00 screwdriver.

Step 2



- Remove the 5.0 mm black screw on the right with a Phillips #00 screwdriver.

Step 3



- Remove the 5.0 mm screw on the left with a Phillips #00 screwdriver.

Step 4



- Begin taking off the back cover with a plastic opening tool.
- Begin by wedging the plastic opening tool behind the bottom left corner of the LCD screen as shown.
- Slide the plastic opening tool to the right, along the mating edge, to pry off the back cover.
- Continue taking off the back cover along the left side of the camera as seen in the third picture.

Step 5



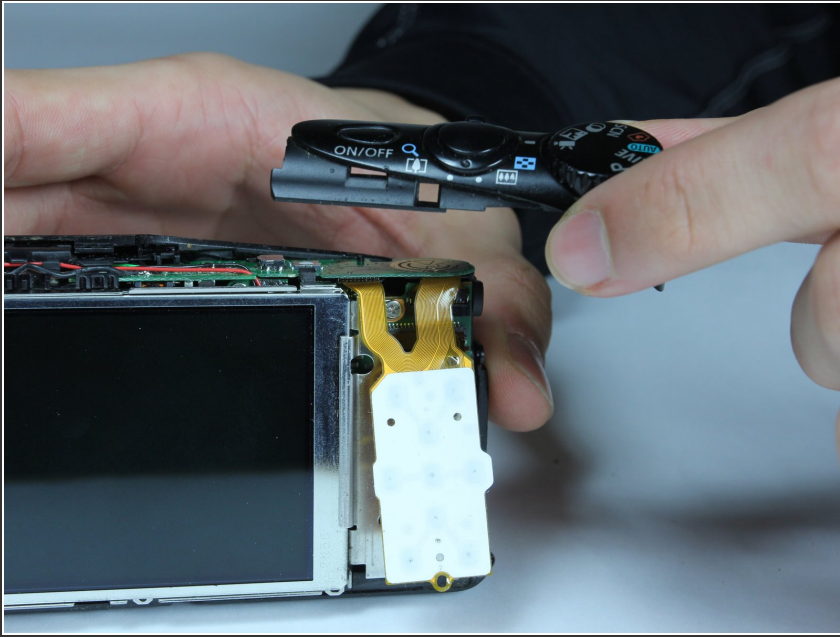
- Use the plastic opening tool to separate the top section of the back cover from the frame.
- Once there is enough separation between the back cover and the frame, remove the back cover for replacement.

Step 6 — Button Assembly



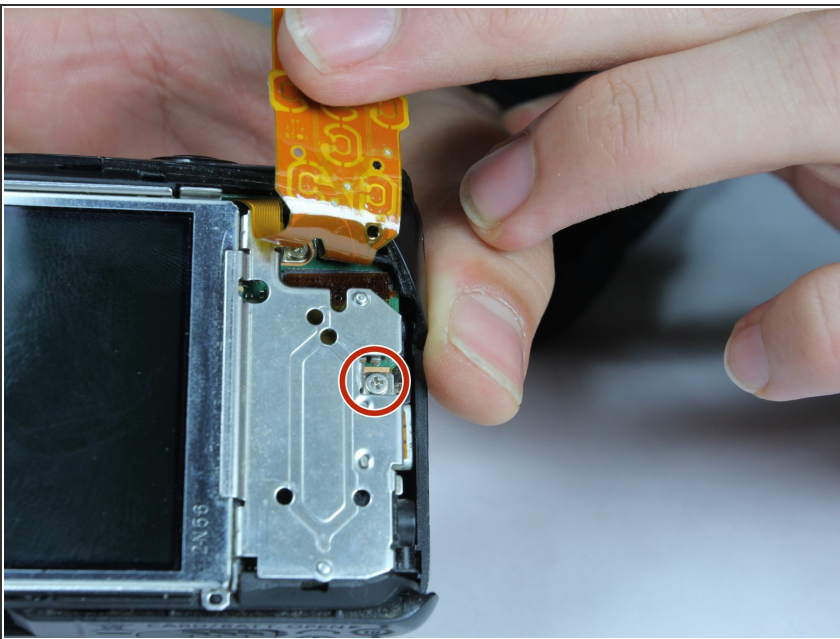
- Remove the internal 4.4mm screw with a Phillips 00 screwdriver.
- ⓘ Make sure you're removing the screw circled in red, not the screw crossed out in orange.

Step 7



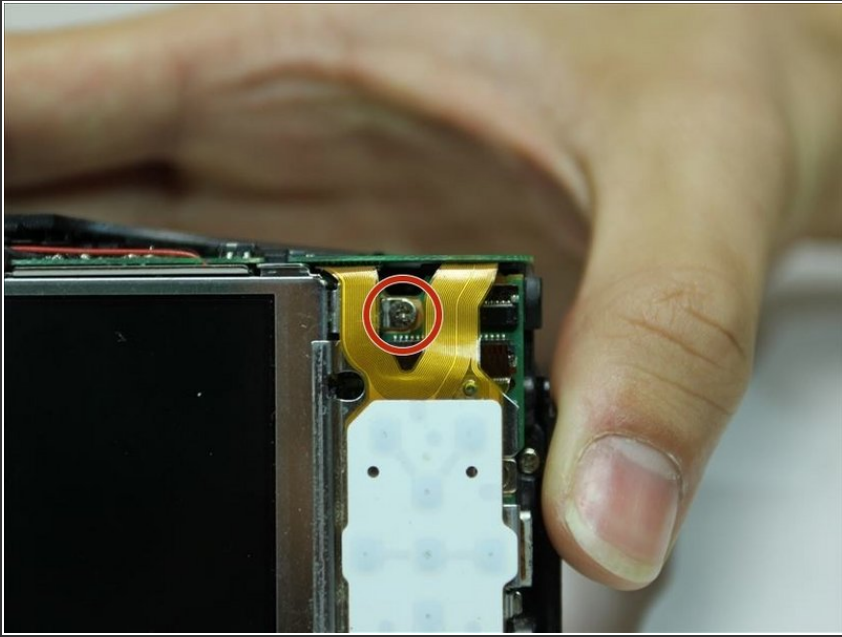
- Gently lift of the buttons for replacement. They should come off without excessive force.
- If the buttons do not lift off easily, you may have unscrewed the wrong screw. Revert to previous step.

Step 8 — LCD Screen



- Lift up the electrical ribbon shown to access the next screw.
- Remove the 3.9 mm screw with a Phillips #00 screwdriver.

Step 9



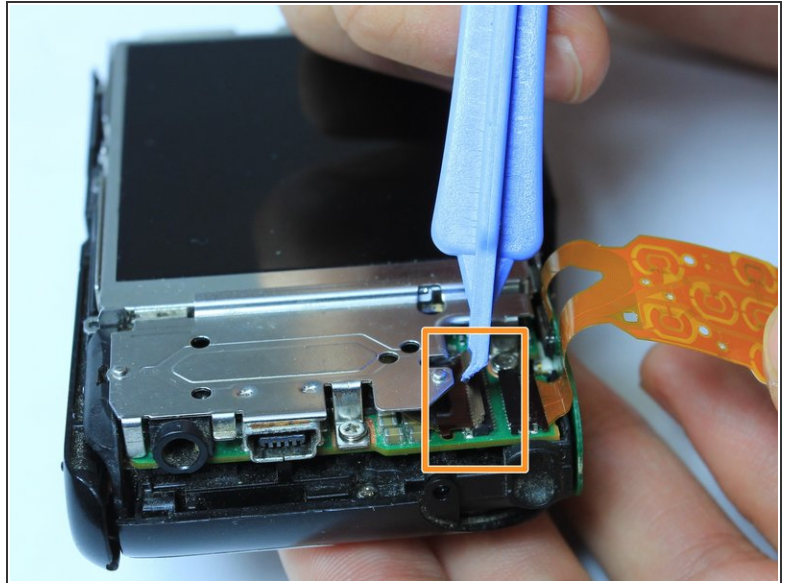
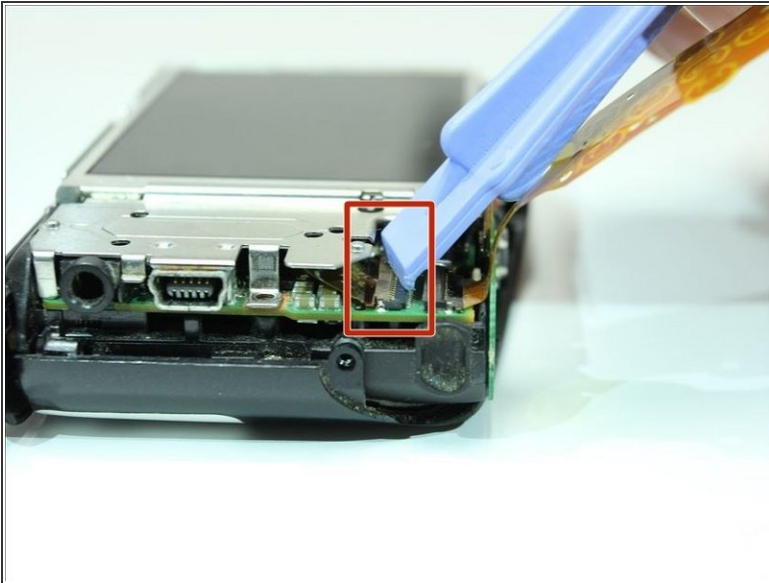
- Remove the 3.9 mm screw with a Phillips #00 screwdriver.

Step 10



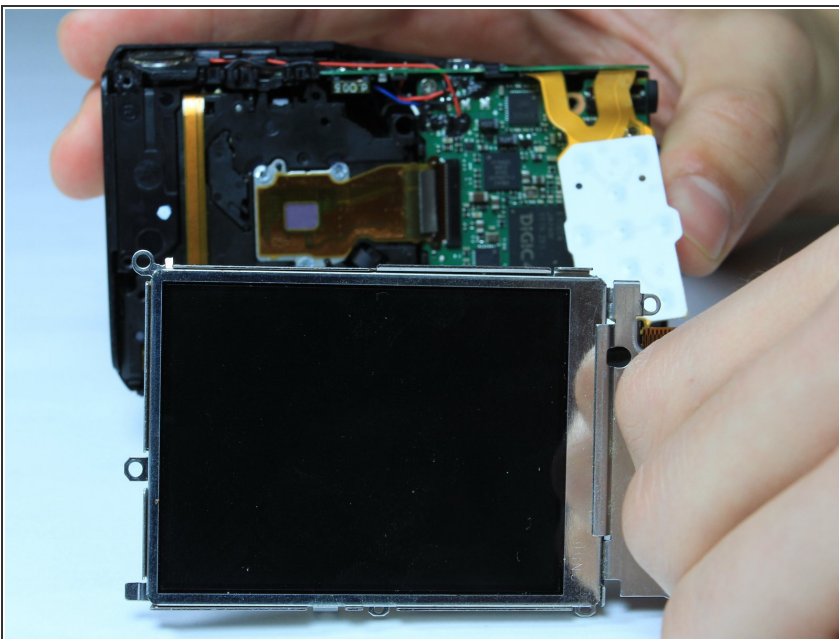
- Remove the two 3.9 mm screws shown with a Phillips #00 screwdriver.

Step 11



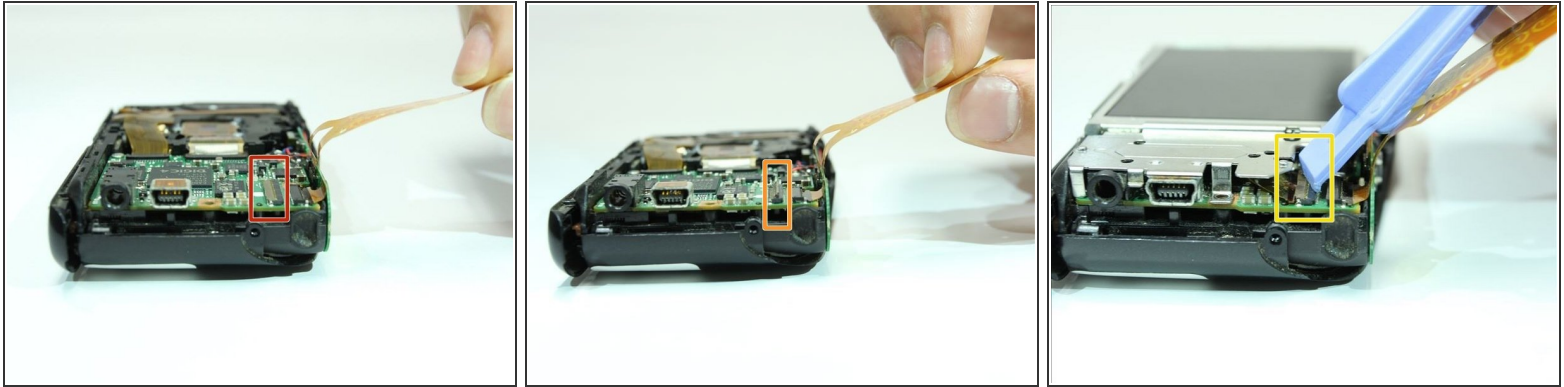
- There is an electrical flap that holds the LCD ribbon down. Note the flap is in closed position.
- Lift up the flap with a plastic opening tool.


Step 12



- Holding the outer frame of the LCD screen, gently lift the LCD screen for replacement.

Step 13



 This step is only for replacement. If you are not replacing the LCD screen, skip this step.

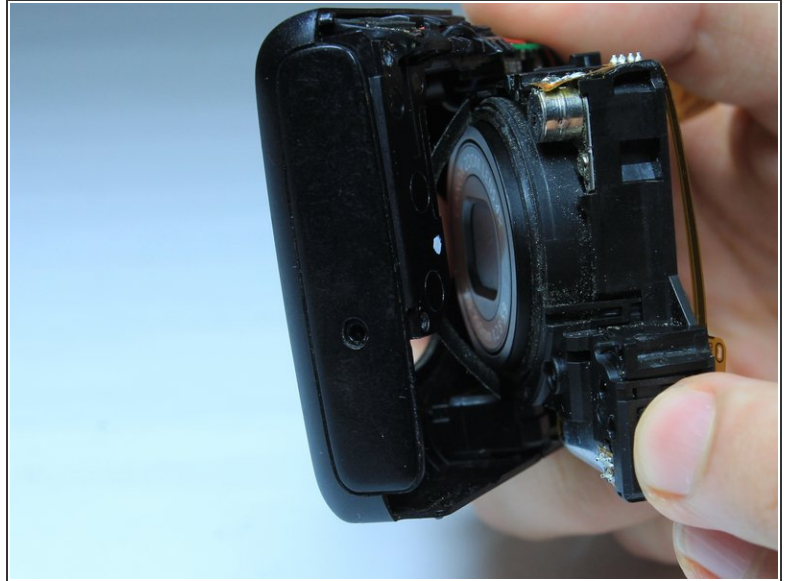
- Locate ribbon flap, enclosed in red. (picture 1)
- Using a plastic opening tool, lift up the ribbon flap to allow insertion of the LCD ribbon. (picture 2)
- Place the LCD screen on the camera and align the ribbon underneath the open ribbon flap. Close the ribbon flap onto the ribbon. (picture 3)

Step 14 — Lens Assembly



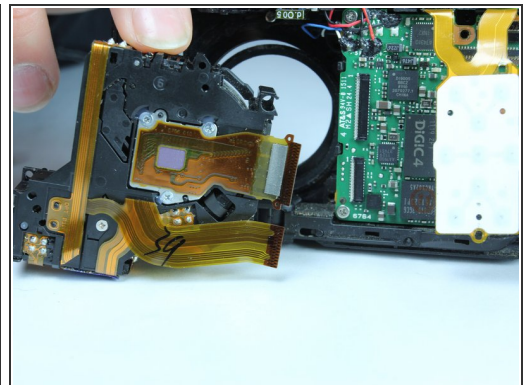
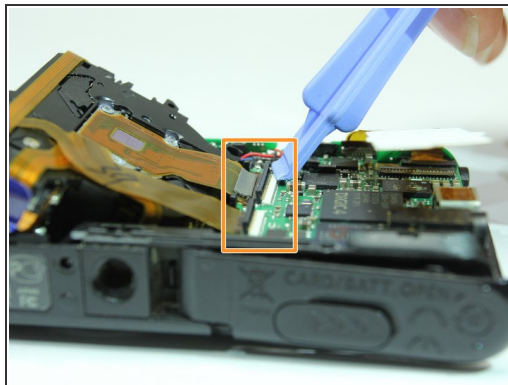
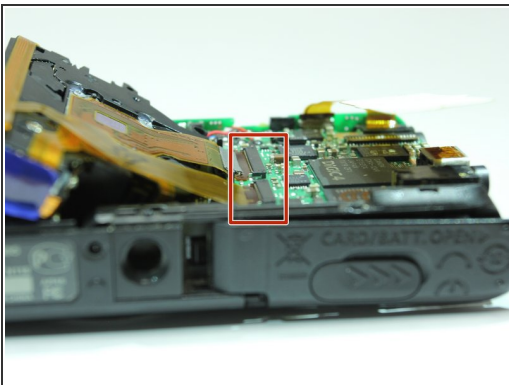
- Remove the two 5.3 mm screws circled in red with a Phillips #00 screwdriver.
- Remove the 4.4 mm screw circled in orange with a Phillips #00 screwdriver.

Step 15



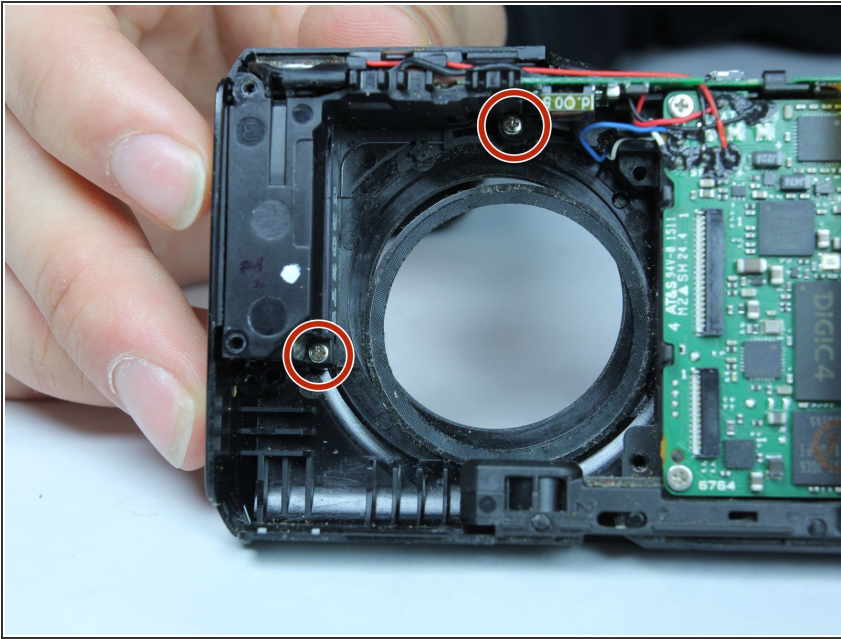
- Gently press the front of the lens to begin to remove it from the frame.
- Gently angle out the lens from the frame as seen in picture 2.
- ⓘ A thin circular ribbon should fall out from the front of the lens. Note its original location on the front cover for reassembly.

Step 16



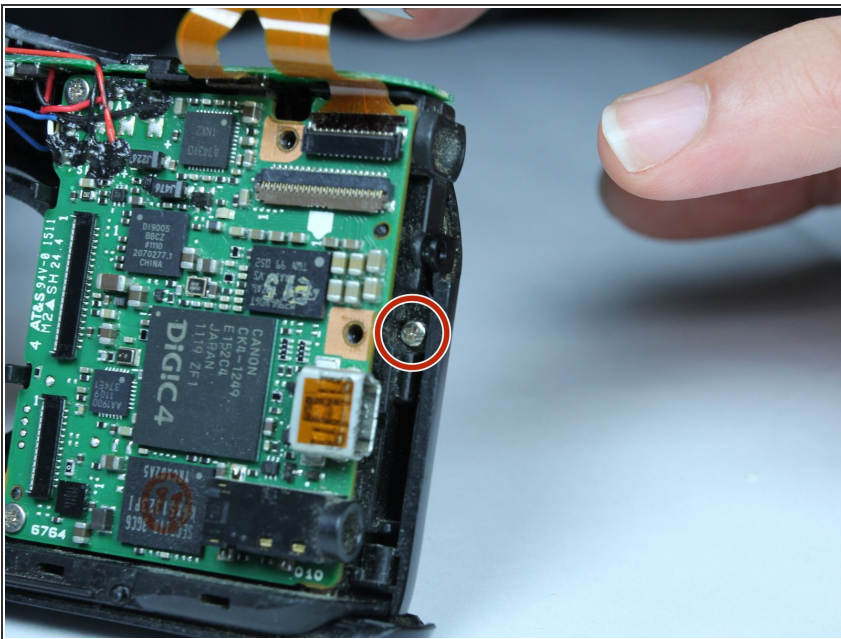
- Locate the two electrical ribbons that are attached to the main motherboard.
- Lift up the two black flaps on the motherboard that hold the electrical ribbons in place.
- Gently remove the lens for replacement.

Step 17 — Front Cover



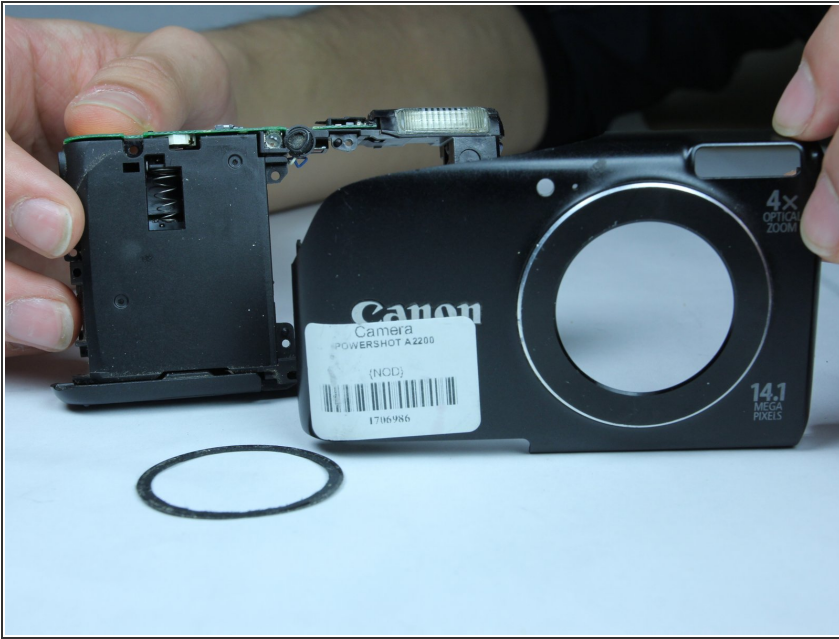
- Remove the two 4.4 mm screws shown with a Phillips #00 screwdriver.

Step 18



- Remove the 4.4 mm screw shown with a Phillips #00 screwdriver.

Step 19



- Gently remove the front cover for replacement.

To reassemble your device, follow these instructions in reverse order.