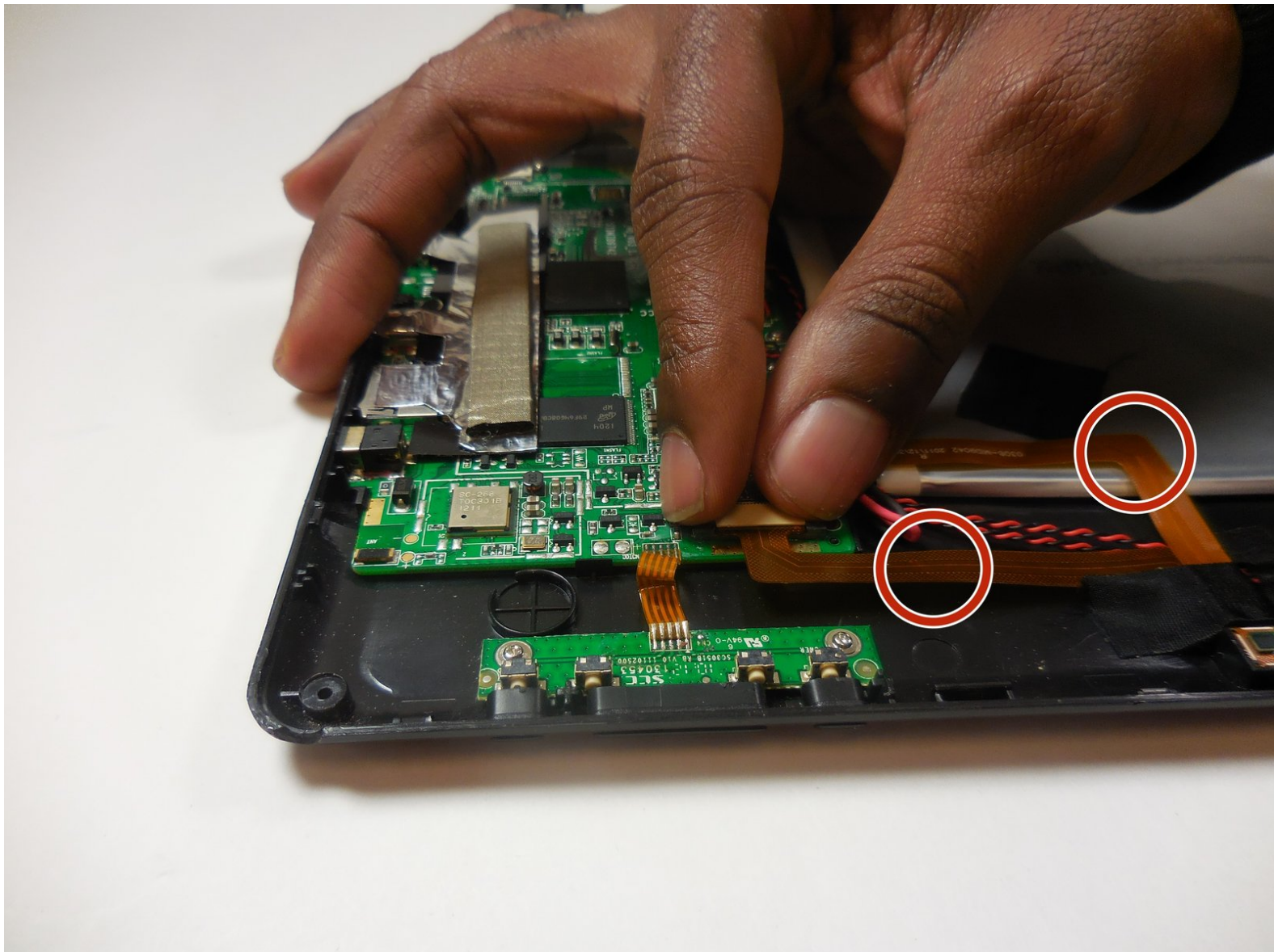




Coby Kyros MID9742 Camera Module Replacement

This guide will explain how to replace the camera module.

Written By: Jake





TOOLS:

- [Metal Spudger](#) (1)
- [Phillips #00 Screwdriver](#) (1)
- [Spudger](#) (1)

Step 1 — Outer Casing



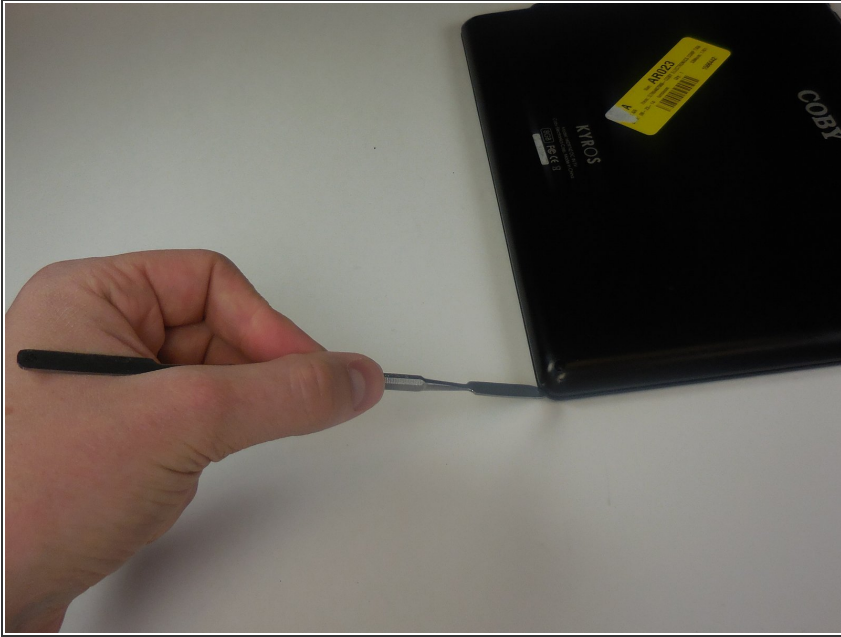
- Use a spudger to remove the four rubber screw covers from the four back corners of the tablet.

Step 2





- Place the PH00 screwdriver and use it to remove the four 0.5 cm screws from each corner of the tablet.

Step 3

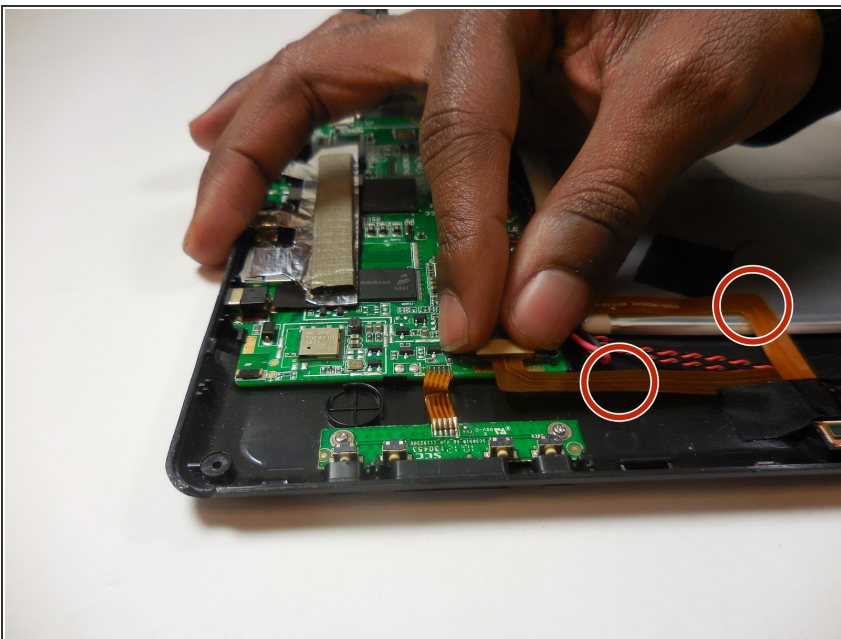


- Place a metal spudger tool in between the front and back panels of the tablet and begin to pry the base from the front panel by moving the metal tool around the perimeter of the tablet.

 Note that clicking noises will be heard during this process, the panels are assembled well so it may take some force to separate the two panels.

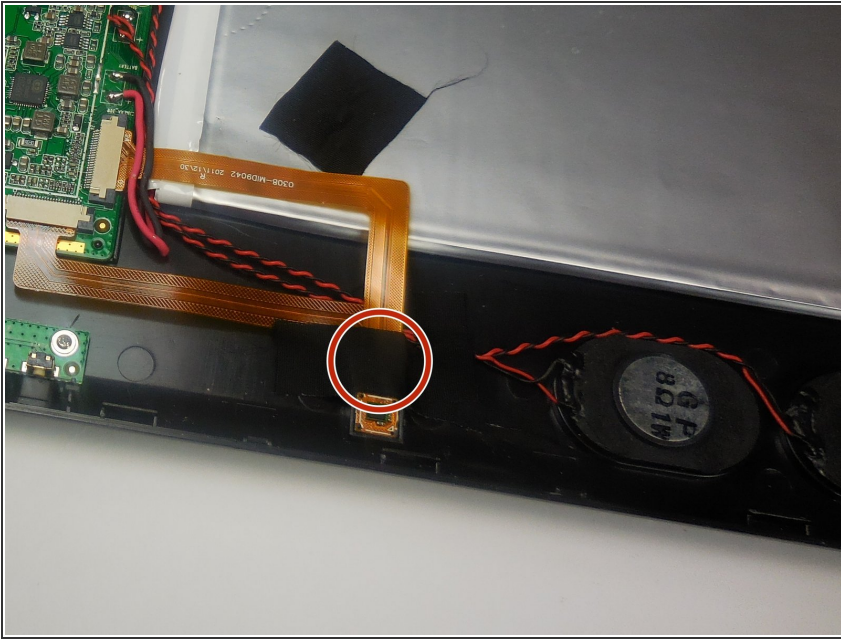
 Use caution while prying, do not stick the metal spudger in too far as it may damage internal components

Step 4 — Camera Module



- Remove the two ribbon cables attached to the logic board.

Step 5



- Remove the tape covering the ribbon cables and remove the camera module.

To reassemble your device, follow these instructions in reverse order.