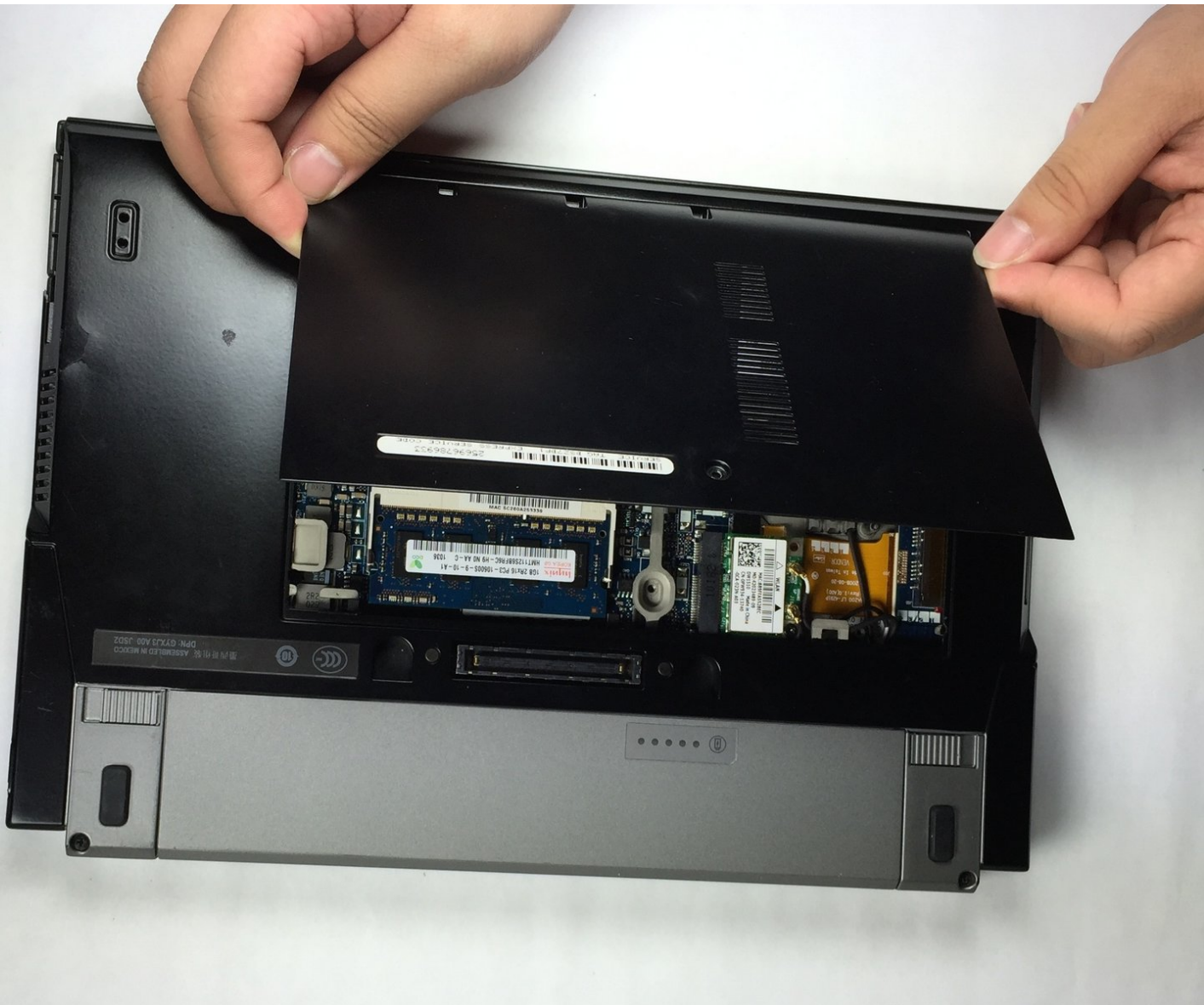




Dell Latitude E4200 Back Panel Replacement

Prerequisite only This guide will explain how to remove the back panel of the computer.

Written By: John Shellenberger



INTRODUCTION

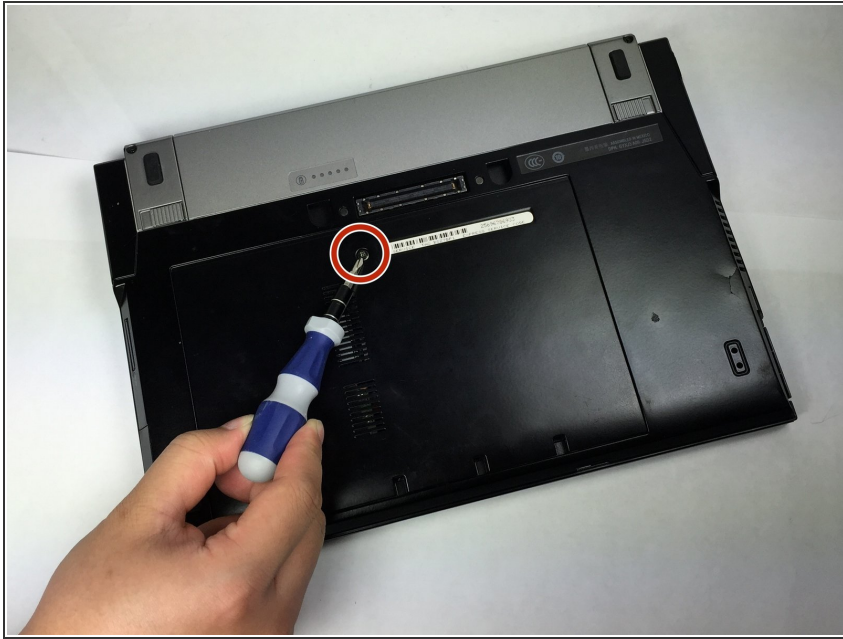
This guide will be helpful to you if you are looking for information on how to remove the back panel. It is essential for accessing the laptop components located on the back side of the main board (ie. RAM and hard drive). Follow the steps in order for successful results.



TOOLS:

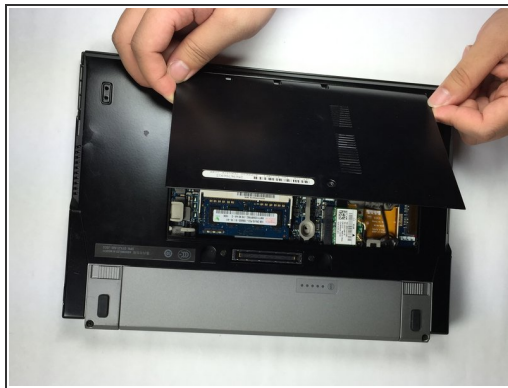
- [Phillips #0 Screwdriver](#) (1)
-

Step 1 — Back Panel



- Use PH0 screwdriver to unscrew the 4.49x7.88 mm screw in the middle of the back panel.

Step 2



- Place thumbs flat on the front side of the back panel (the side to open the laptop).
- Push panel upwards sliding it out of the locked position.
- Lift panel out of socket.

Step 3



- Remove panel and screw from the device. This opens up the main board of the device.

To reassemble your device, follow these instructions in reverse order.