



Motorola Moto E Motherboard Replacement

Use this guide to replace the motherboard on...

Written By: Alex Craig



INTRODUCTION

Use this guide to replace the motherboard on your Motorola Moto E.

Before you begin, download the [Rescue and Smart Assistant](#) app to backup your device and diagnose whether your problem is software or hardware related.

TOOLS:


[Spudger \(spatule antistatique\)](#) (1)

[Outil pour ouvrir iFixit](#) (1)

[Tournevis Torx T4](#) (1)

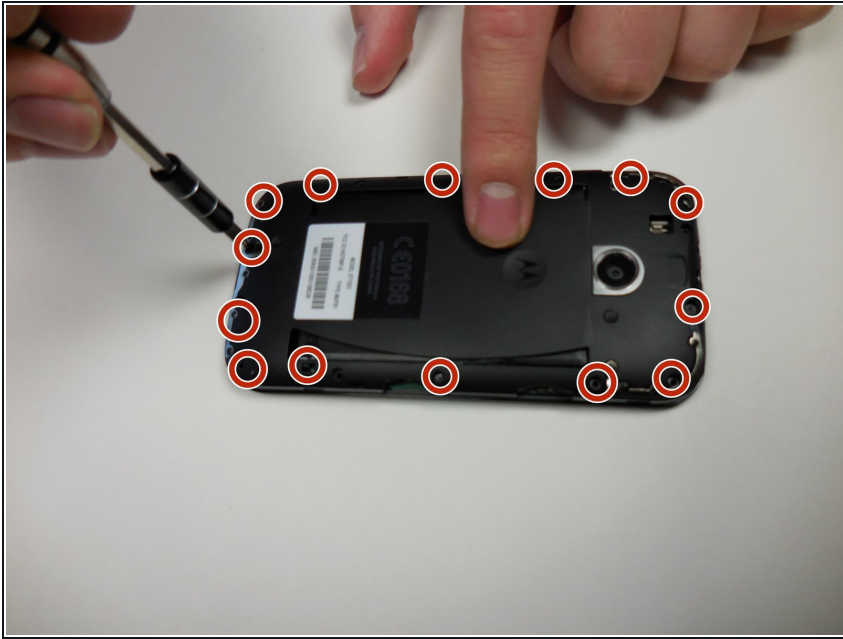
Step 1 — Motherboard



 **Turn off the device before beginning.**

- To remove the back cover, start at one corner and stick the plastic opening tool under the cover and pry it away from the phone.
- With the plastic opening tool, pry all the way around the phone while lifting up on the cover.
- ① You should hear a snapping sound at each corner.

Step 2



- Unscrew the 14- 4mm screws using a T4 Torx driver head.
- ⓘ Working on a magnet board is recommended as the screws are small and can be easily misplaced.

Step 3



- Using the same plastic opening tool as in step 1, once again pry up on the edges of the plastic back cover.
- ⓘ Be sure that all of the screws are out before lifting the cover. The plastic backing is fragile, and it may break.

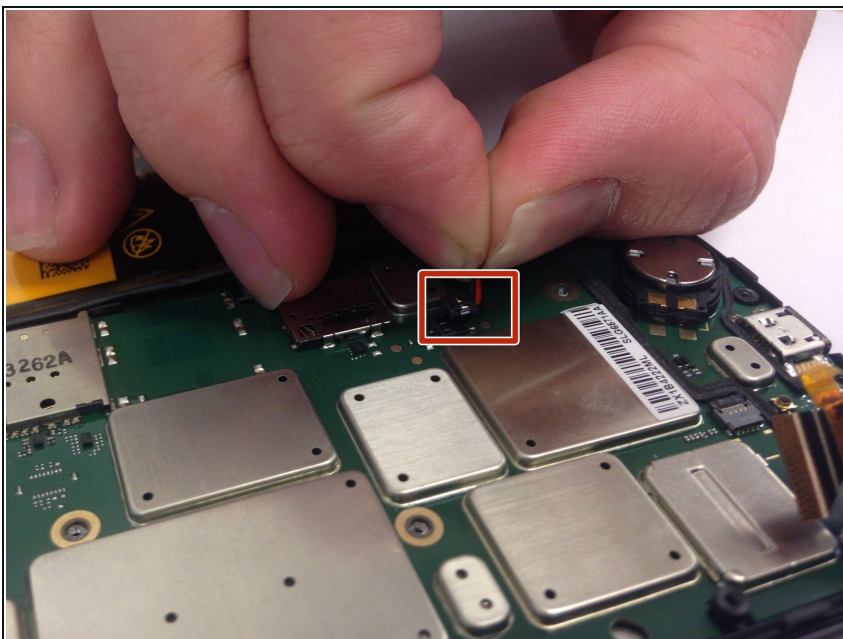
Step 4



- Gently lift the back plate away, exposing the motherboard. The battery will be stuck to the back of the cover, so be careful when lifting it off.

⚠ Do not touch the connections to the battery in the red square on the picture.

Step 5



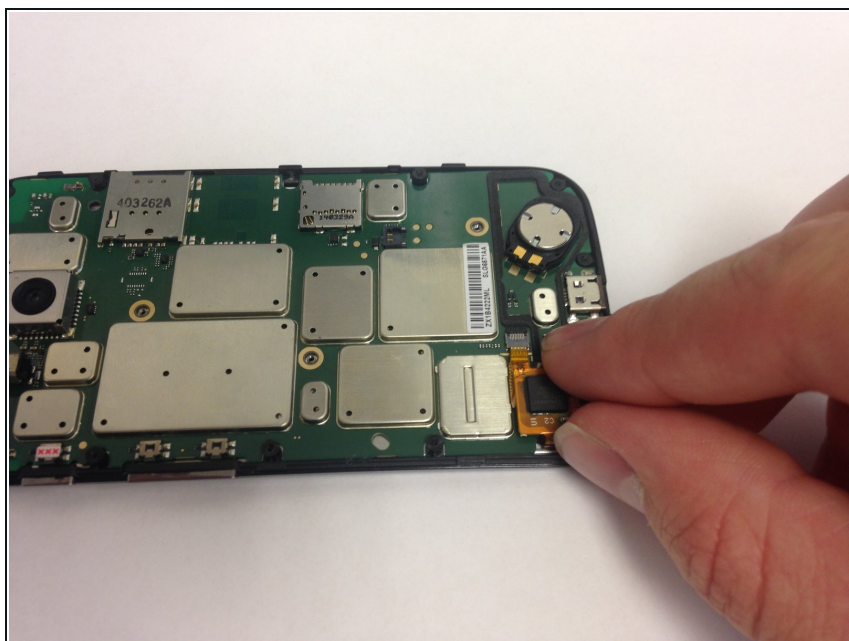
- Gently pull up on the red and black power cable to lift the connector out of the motherboard.
- Move the battery and cover away from the motherboard.

Step 6



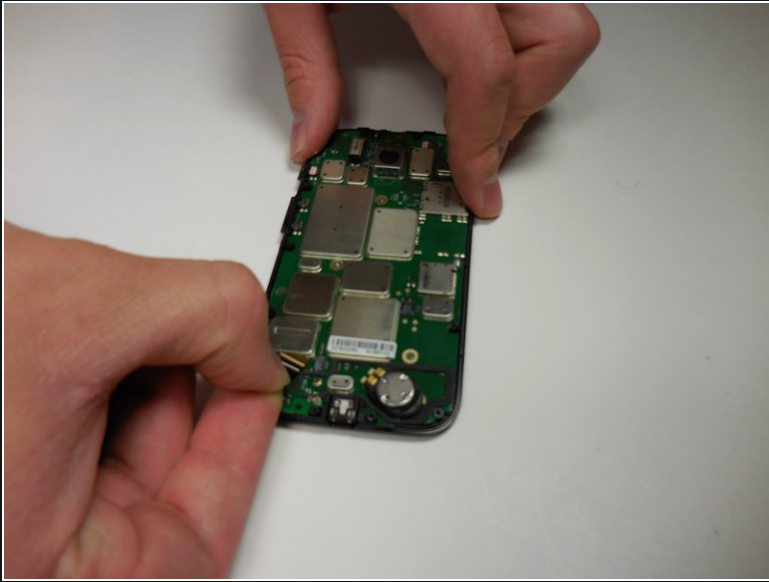
- Unscrew the 3- 1mm screws using the T4 torx driver head.

Step 7



- Lift up on the white plastic mount.
- Pull the orange ribbon cable out gently.

Step 8



- Gently pull the black ribbon cable out.

Step 9



- Using the metal spudger, pry the motherboard away from the screen assembly.

To reassemble your device, follow these instructions in reverse order.