



# Disassembling IBM ThinkPad A30 Motherboard

Written By: Alan





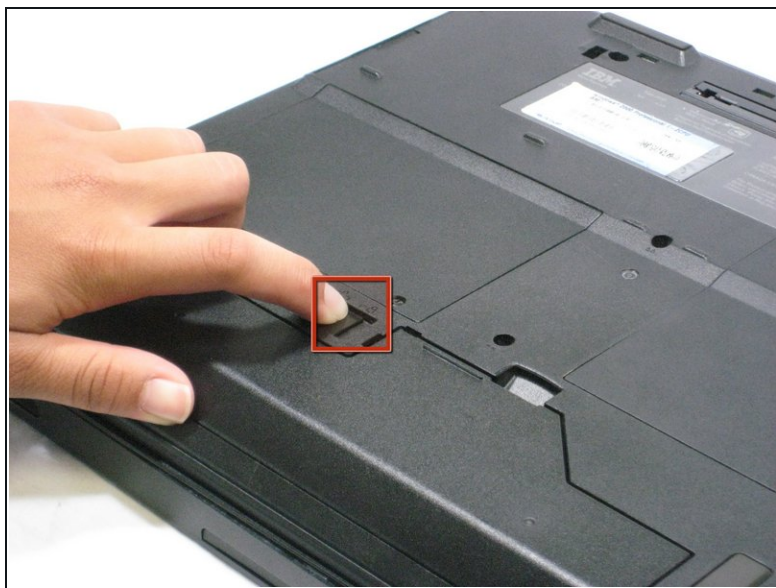
## TOOLS:

Phillips #00 Screwdriver (1)

Phillips #1 Screwdriver (1)

iFixit Opening Tool (1)

### Step 1 — Battery



**i** Flip the ThinkPad over so that it is upside down.

- Slide the highlighted tab to the left.
- With your finger on the tab, remove the battery by lifting it upwards away from the laptop.

## Step 2 — Hard Drive



- Remove the highlighted screw with a Phillips #1 screwdriver.
- Pull the hard drive out.

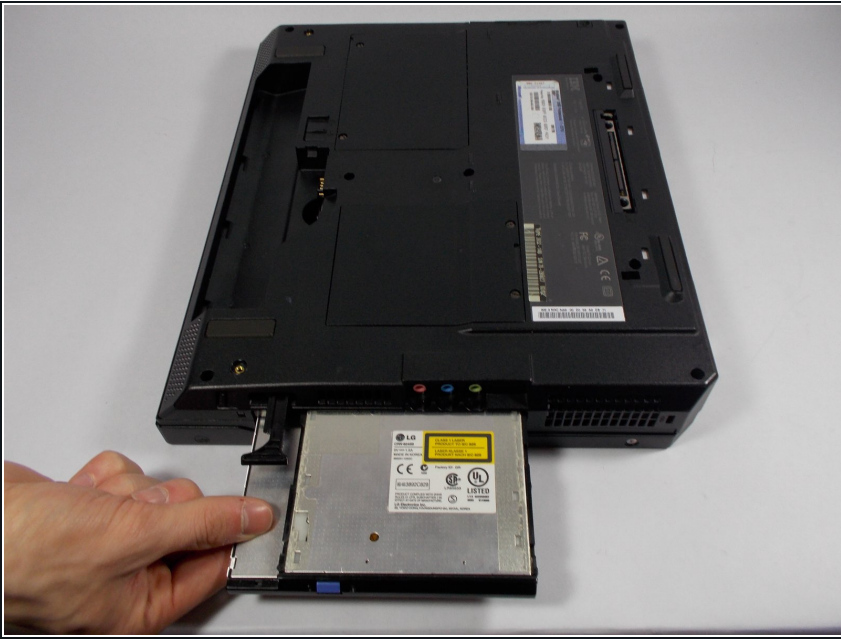
## Step 3 — CD Drive



- Hold the laptop in the same orientation as the picture. Then, locate the switch immediately above and to the left of the drive.
- Slide the switch to the right. A black plastic tab will pop out.
- Pull the plastic tab to expose the CD drive.
- If there is a problem with your tab, whether it doesn't pop out or it doesn't expose the CD drive, please check the corresponding entry in the troubleshooting page.

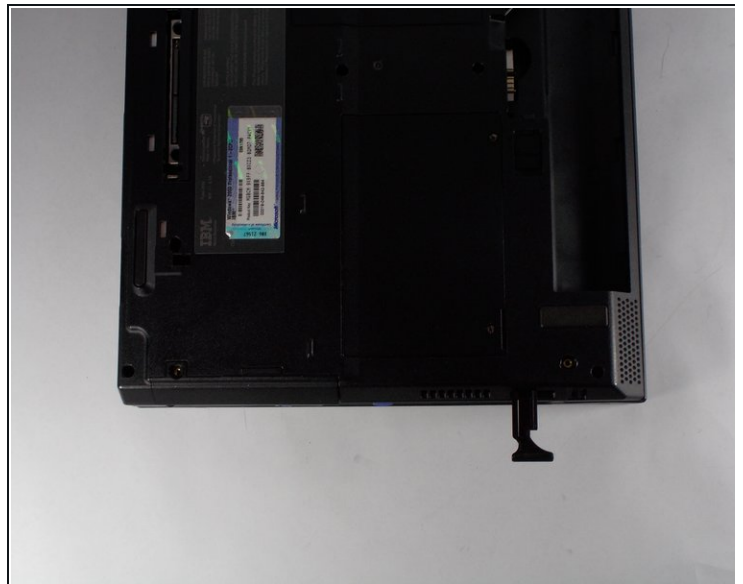


## Step 4



- Carefully pull the CD drive out from the laptop.

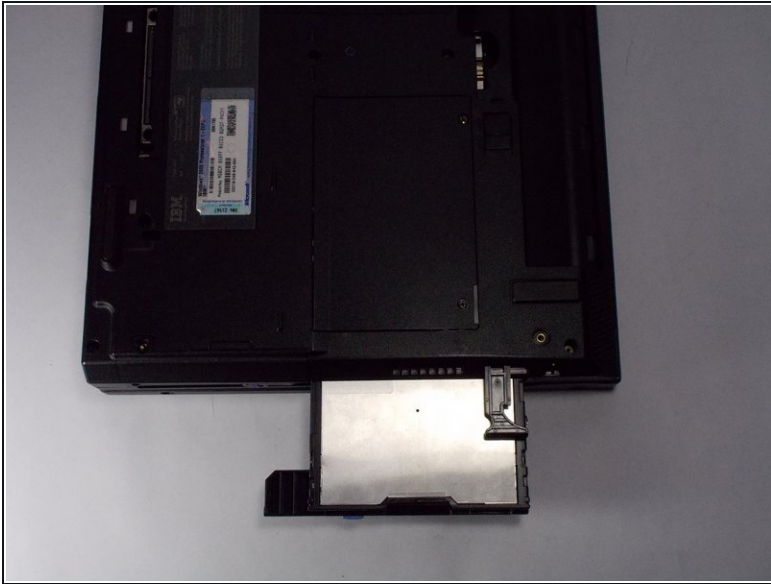
## Step 5 — Floppy Disk Drive



**i** Hold the Thinkpad as the picture shows.

- There is a switch located just above and to the right of the drive.
- Slide the switch to the right. A small, black tab will pop out.

## Step 6



- Pull the small black tab away from the computer to access the drive.
- Gently pull the drive out from the laptop.
- If there is a problem with your tab, whether it doesn't pop out or it doesn't expose the floppy drive, please check the corresponding entry in the troubleshooting page.

## Step 7 — Upper Case



- ① Make sure the laptop is upside down and oriented in the direction shown.
- Remove the six 16.7mm screws inside the circled holes.



## Step 8



- Rotate the ThinkPad so that the hard drive bay is facing you.
- Remove the black cover to reveal a 14.8mm screw.
- Remove the uncovered screw with a Phillips #0 screwdriver.

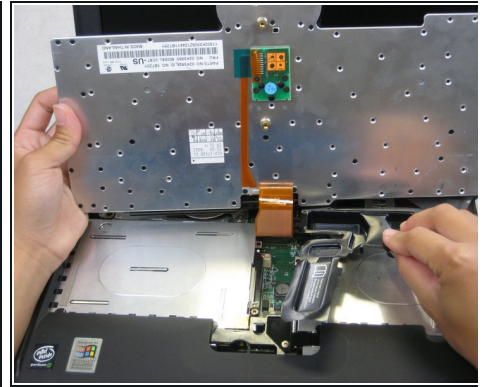
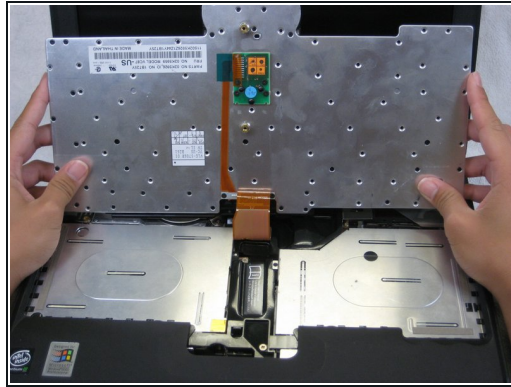
## Step 9



**i** Flip the ThinkPad over and open the LCD panel.

- Pry apart the keyboard with a plastic opening tool or with your fingers.

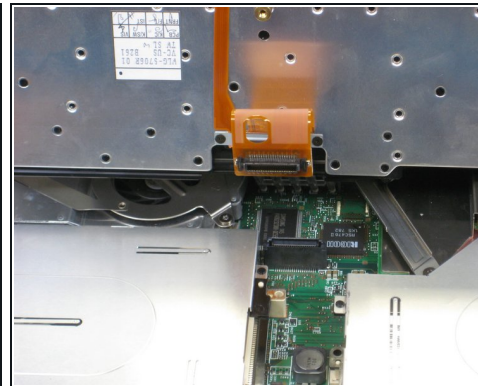
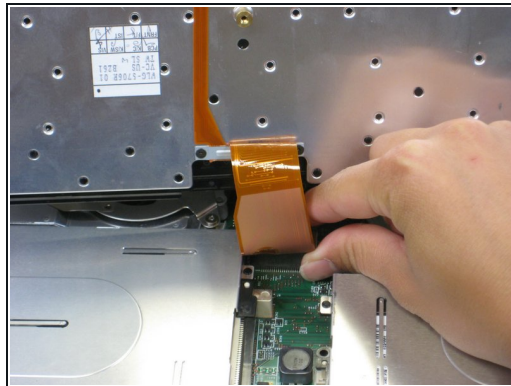
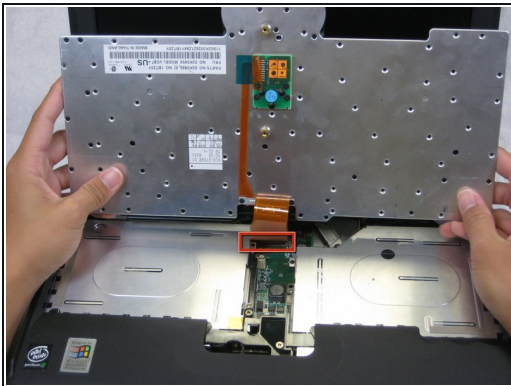
## Step 10



⚠ Be careful not to pull out the keyboard carelessly; there is a connector underneath it!

- Lift the front end of the keyboard as shown.
- Using your fingers, remove the black film cover.

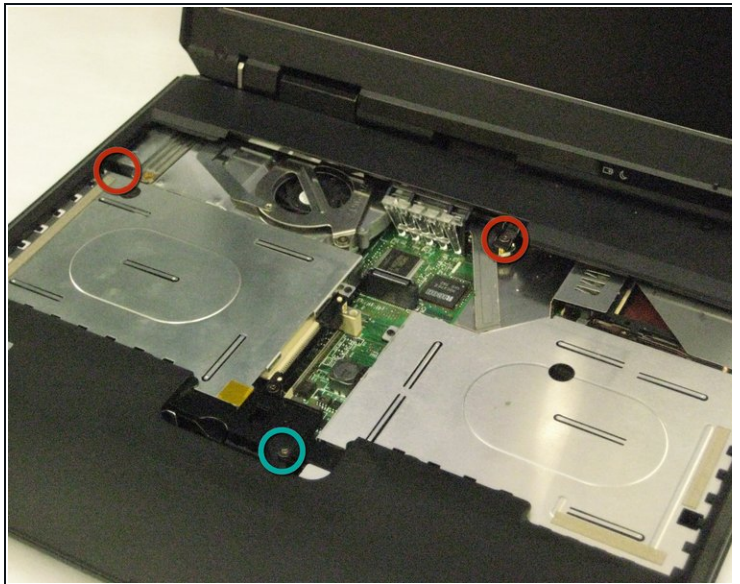
## Step 11



- Locate the connector attached to the motherboard.
- Disconnect the ribbon cable by removing the connector.



## Step 12



- Lift and remove the keyboard.
- Remove the two 5.6mm screws.
- Remove the 16.7mm screw.

## Step 13

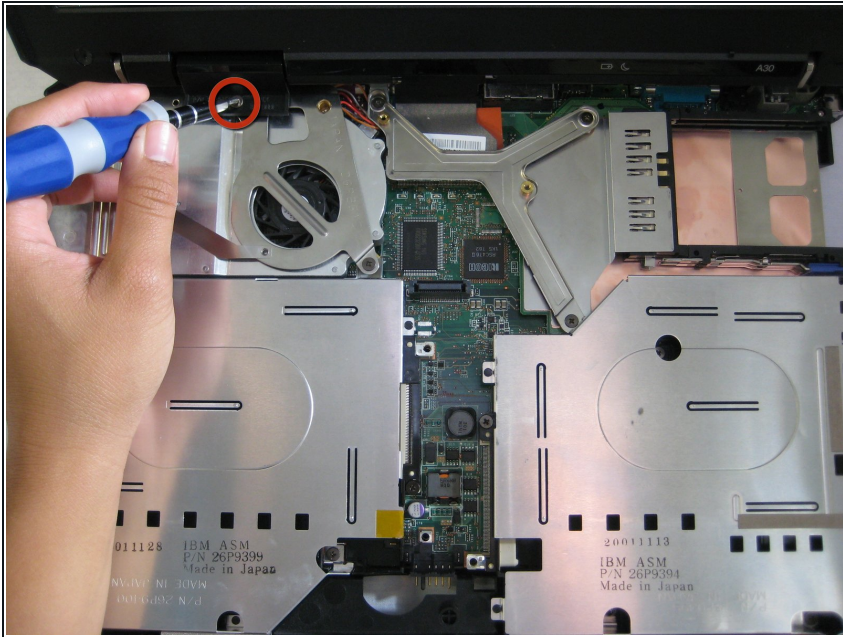


⚠ You will need to use a little force. Be wary of the tabs.

- Pry off the upper case with your hands.

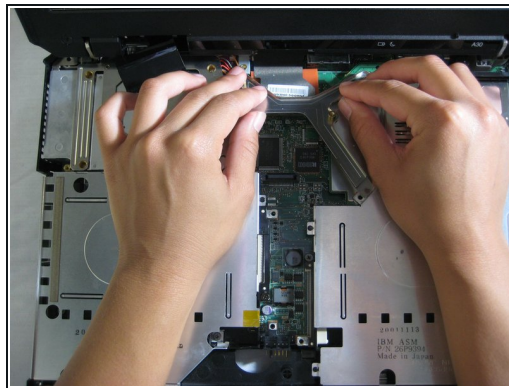
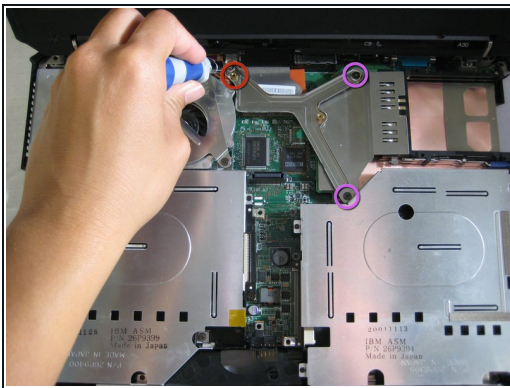


## Step 14 — Display Assembly



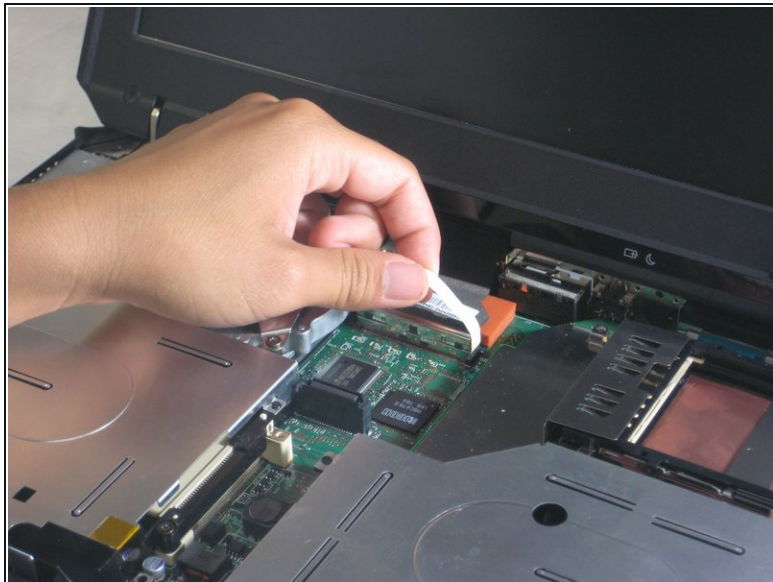
- Remove the 5.6mm screw that holds the LCD to the upper case.

## Step 15



- Remove the 5.6mm screw on the left side of the three-pronged connector.
- Remove the other two 16.7mm screws.
- Lift and remove connector.

## Step 16



- Pull out the white tab connecting the LCD to the motherboard.

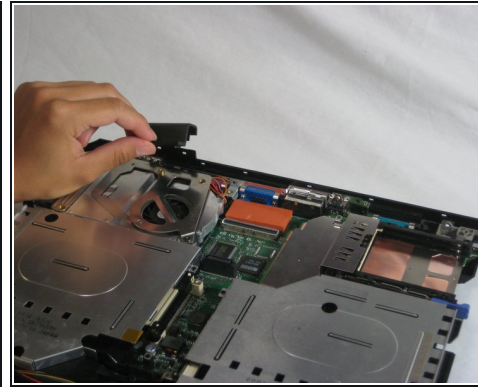
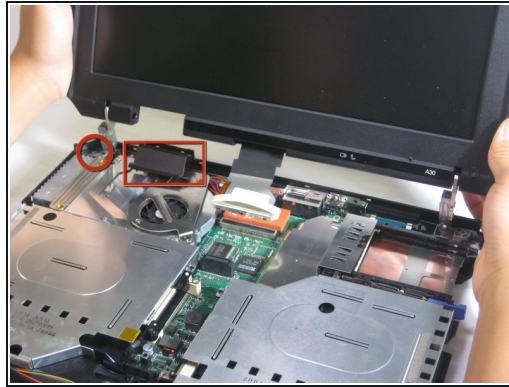
## Step 17



- Turn the laptop so that the back is facing you.
- Remove the four 5.6mm long screws.



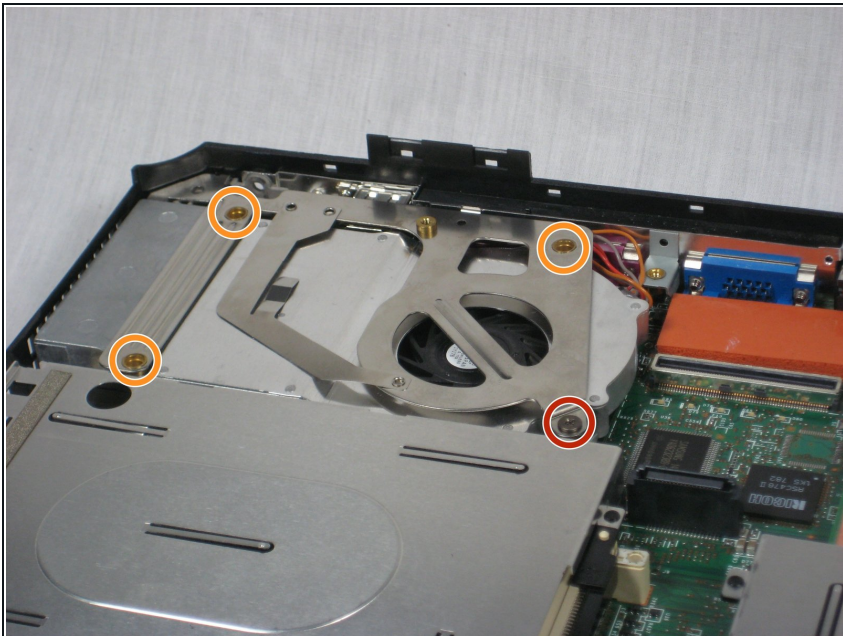
## Step 18



**i** Place the laptop so that the LCD is facing you again.

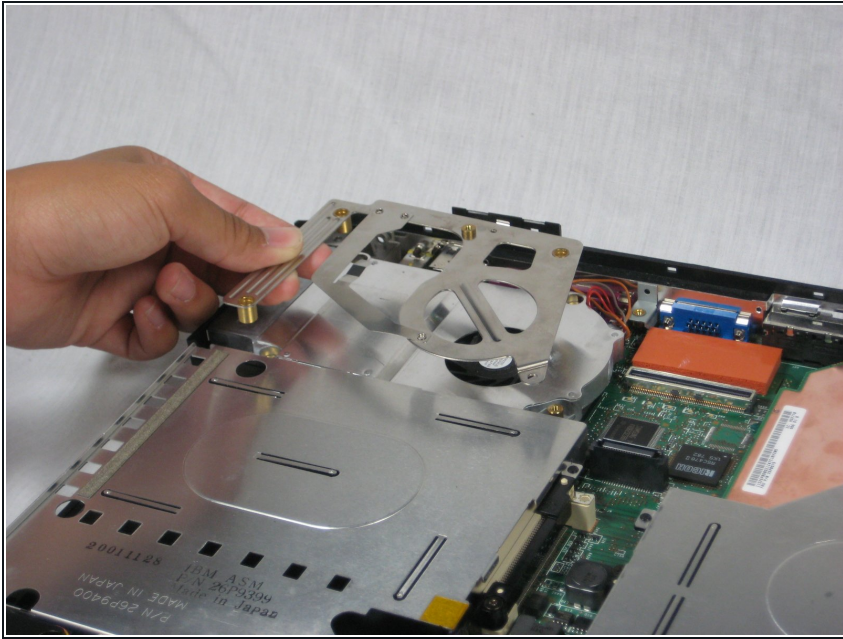
- Gently lift the LCD monitor up and out.
- Remove the black plastic tab.

## Step 19 — Fan



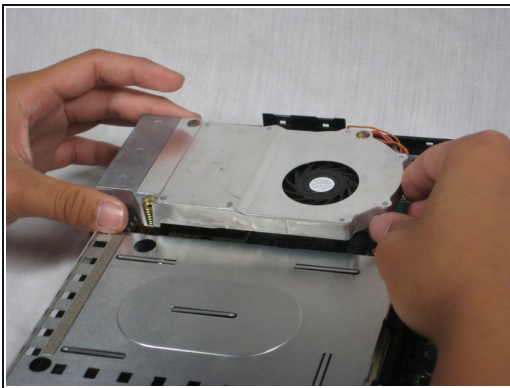
- Remove the following screws from the fan retention bracket:
  - Single 5.6 mm screw.
  - Three 16.1 mm screws.

## Step 20



- Lift the heatsink bracket up.

## Step 21



⚠ Be careful not to pull too hard. There is a cable attached to the fan.

- Lift the fan/heatsink assembly up.
- Locate the fan power cable and pull upwards near the connector.
- Remove the fan/heatsink assembly.

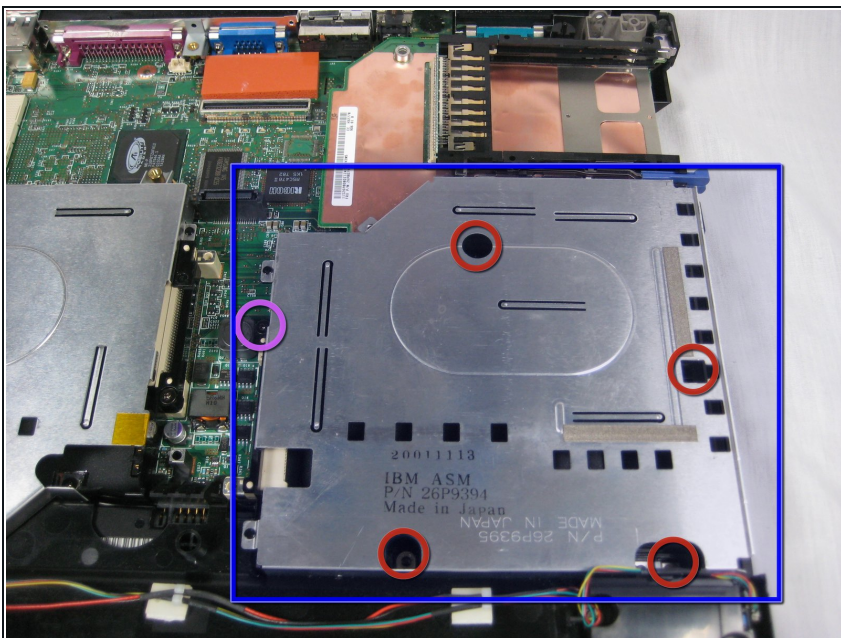


## Step 22 — CPU



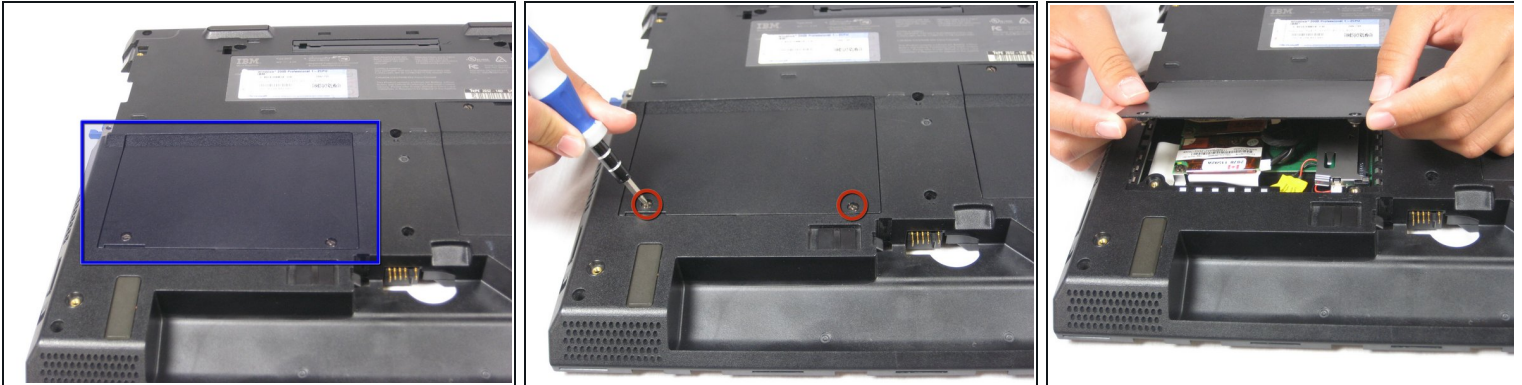
- Use a flathead to turn the screw 180 degrees.
- Remove the CPU by lifting it upwards.
- ❗ If the CPU is reusable, place it in an antistatic bag and away from moisture.

## Step 23 — Motherboard



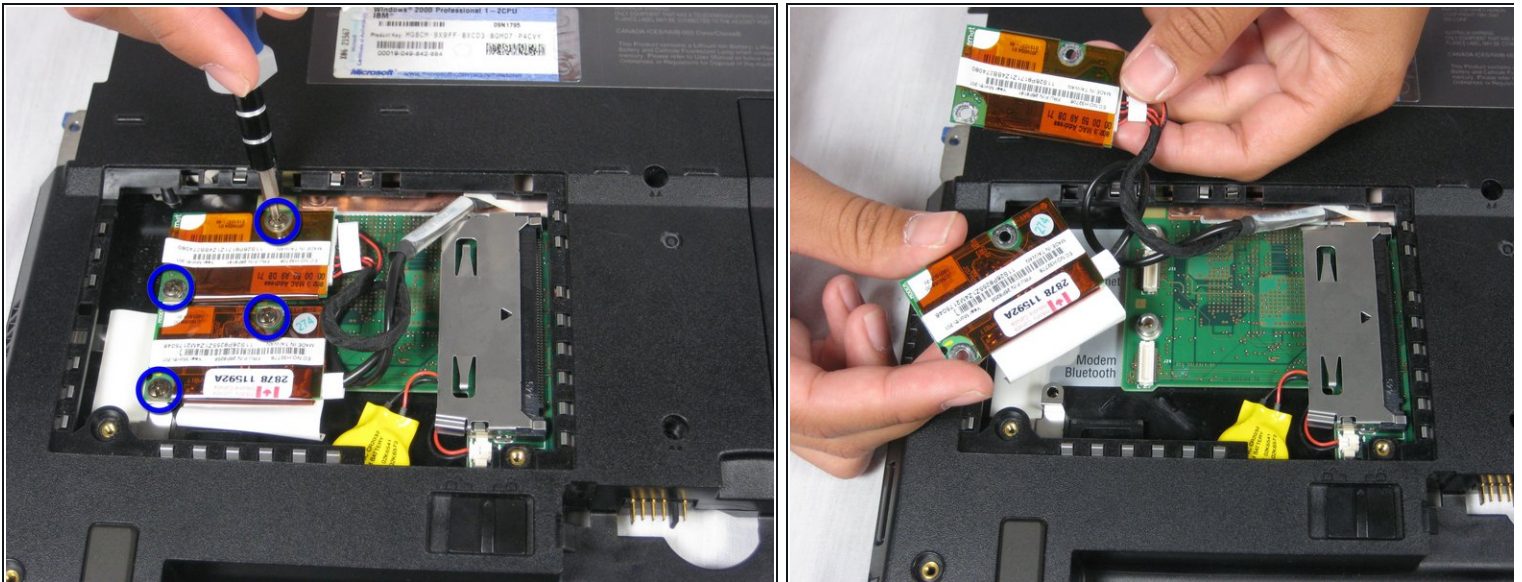
- Locate the floppy drive bay.
- Remove the four 5.6mm screws.
- Remove the 16mm screw.

## Step 24



- Turn the laptop over so that the battery is towards you.
- Locate the modem and ethernet card bay.
- Remove the two 5.3mm cover screws.
- Gently lift the cover.

## Step 25



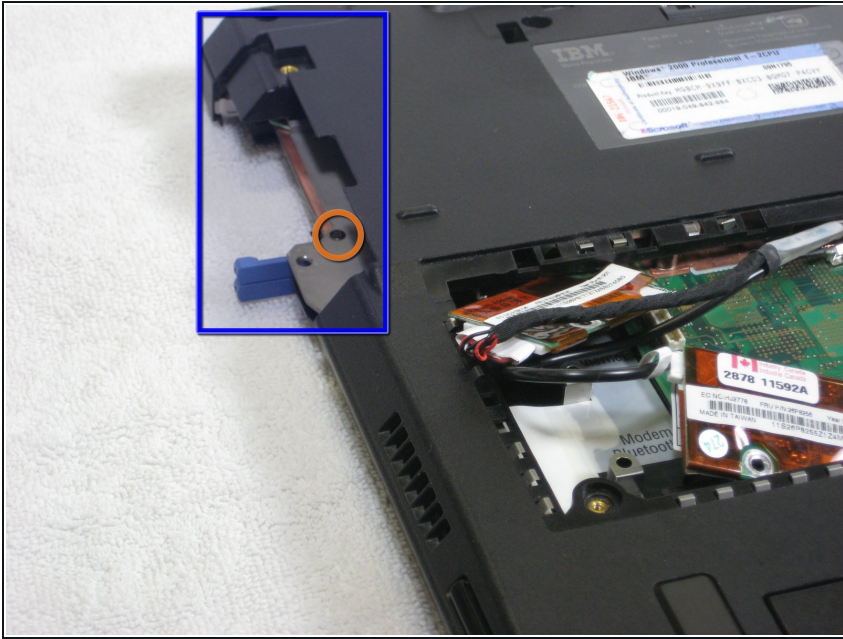
- Remove the four 9.1mm screws attached to the modem and ethernet cards.

⚠ When lifting the cards, be careful not to rip out the cables!

- Gently lift the modem and ethernet cards.



## Step 26



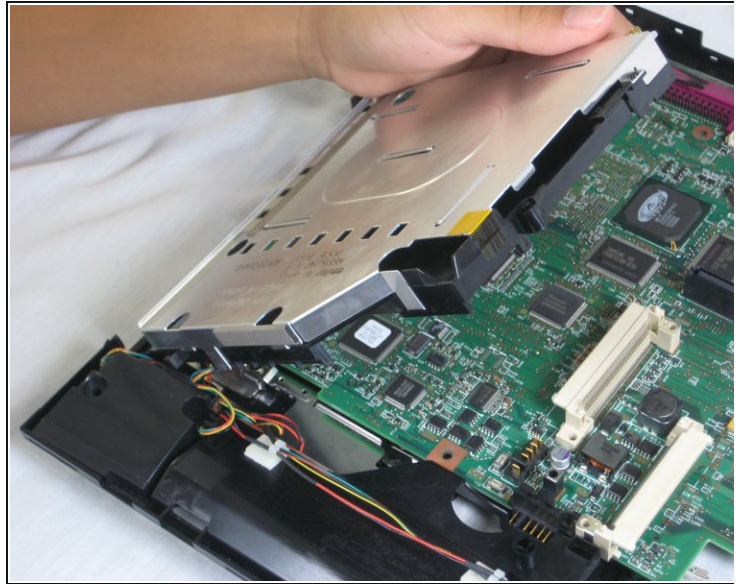
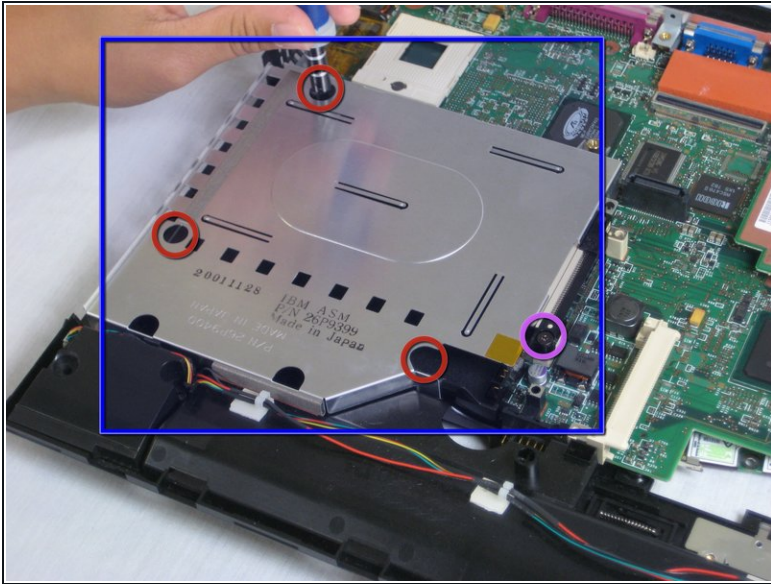
- Locate the hard drive slot.
- Remove the 8.8mm screw with a Phillips #0 screwdriver.

## Step 27



- Turn the laptop over again and orient it as shown.
- Lift the left side of the floppy disk bay and pull it out.
- ① The black lever will pop out.

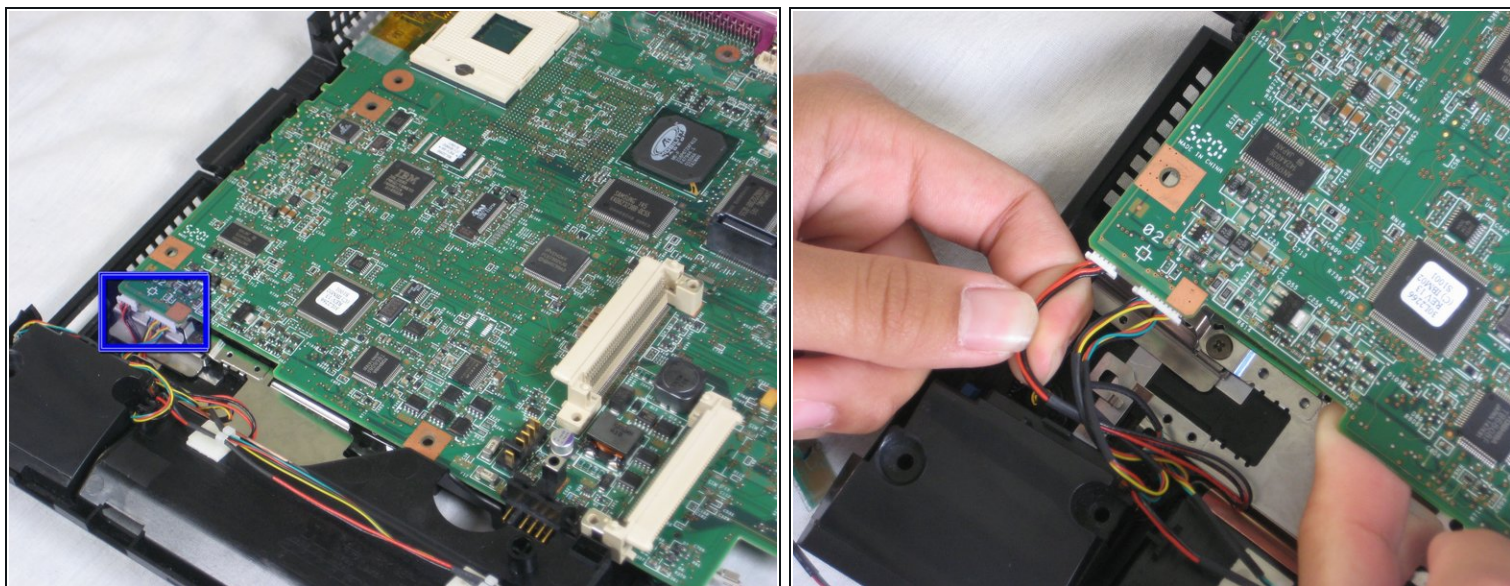
## Step 28



- Locate the CD Drive Bay
- Remove the three 5.6mm screws.
- Remove the 16mm screw.
- Lift the right side and pull the CD drive bay out.
- ⓘ The black lever will pop out.

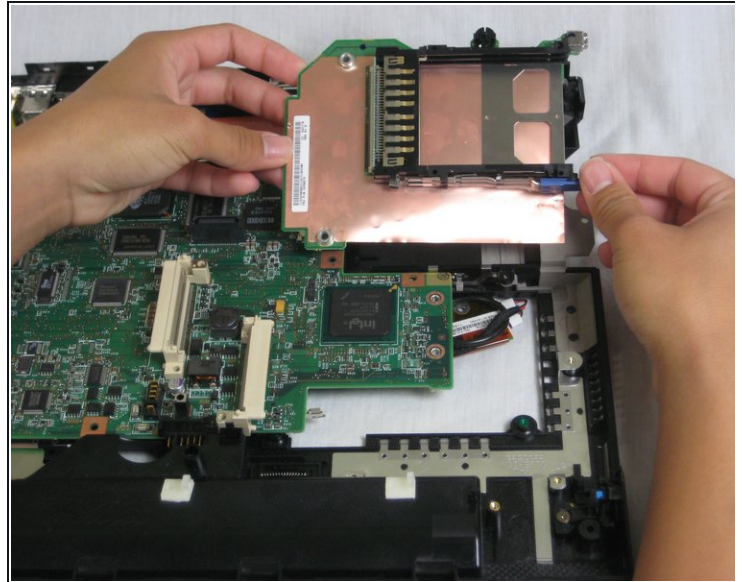
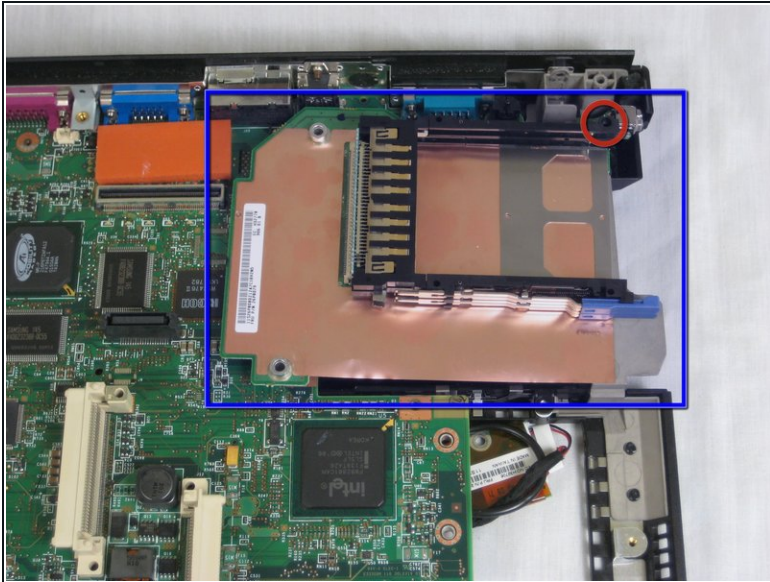


## Step 29



- Once the CD drive bay is removed, locate the speaker data and power cables.
- Remove the cables from the motherboard.

## Step 30



- Locate the expansion bay.
- Remove the 16mm screw.
- Lift and remove the expansion bay.

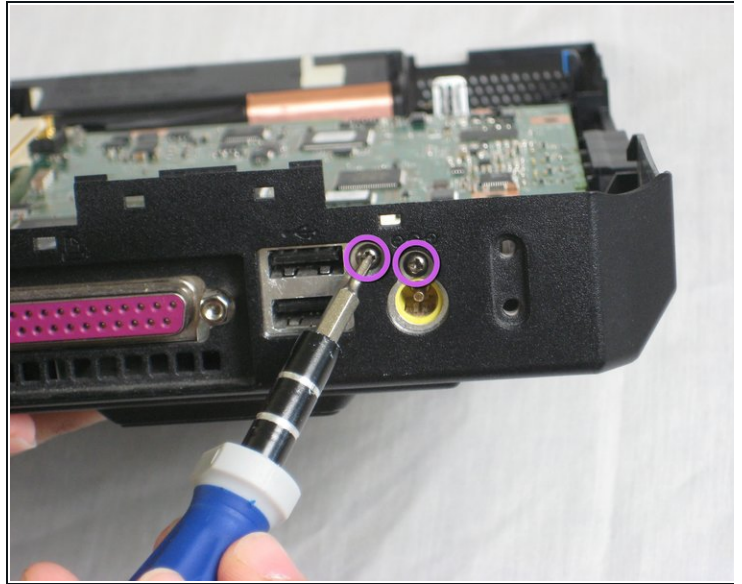
## Step 31



- Rotate the laptop so that the back ports are facing you.



## Step 32



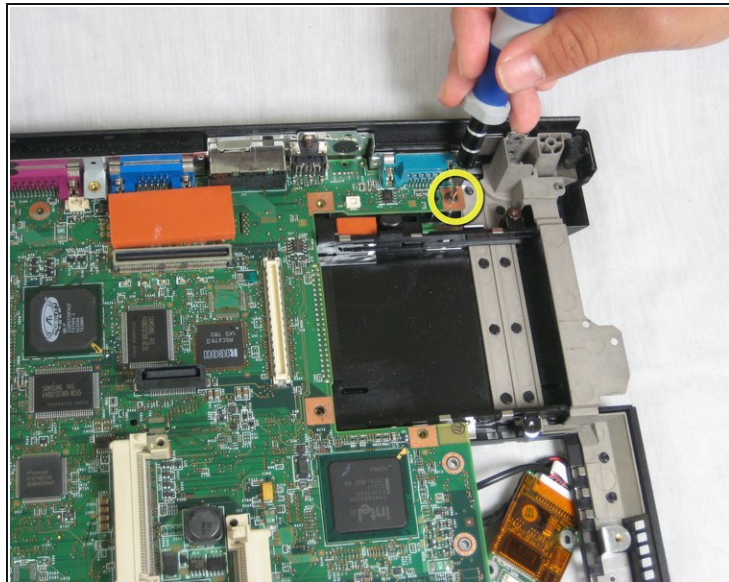
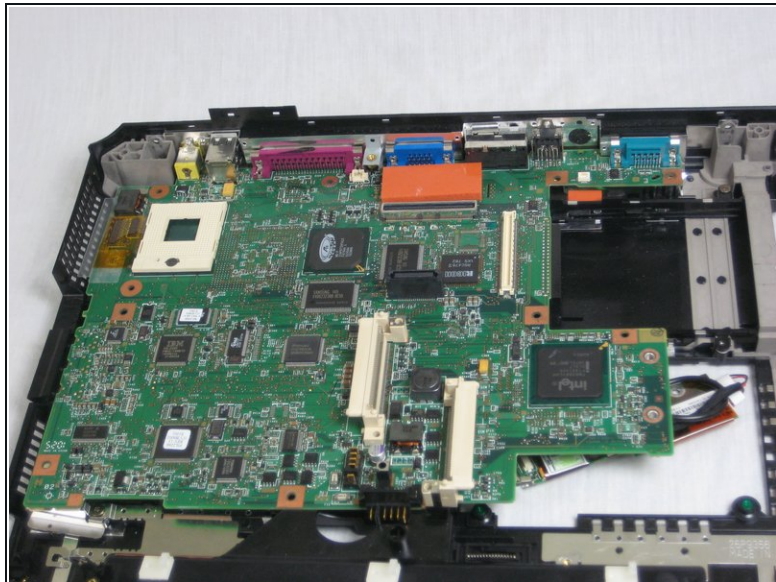
- Remove the three 5.8mm screws with a Phillips #0 screwdriver.

## Step 33



- Remove the six 11mm nuts with a wrench.
- ⓘ Pliers can be used, but are not recommended.

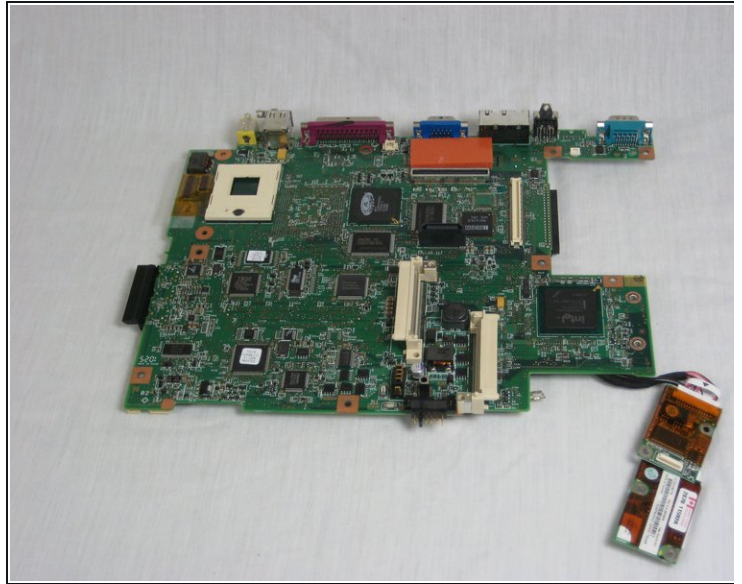
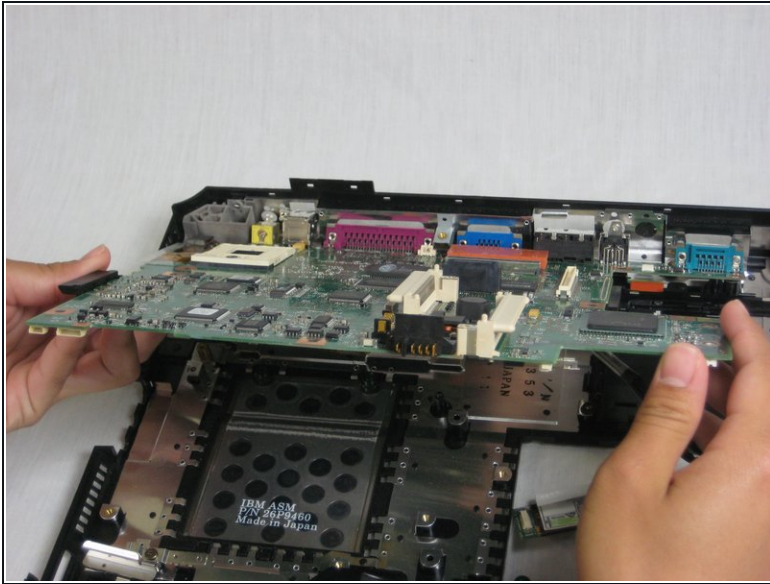
## Step 34



- Rotate the laptop to its original position.
- Remove the 5.6mm screw located on the upper right corner of the motherboard.



## Step 35



**⚠ The wireless and bluetooth cards are connected to the motherboard!**

- Pull out the motherboard towards you carefully.
- Place the motherboard somewhere dry and clean.

To reassemble your device, follow these instructions in reverse order.