



Dell Optiplex SX280 Lower Fan Replacement

This guide is designed to help replace a broken...

Written By: Tom



INTRODUCTION


This guide is designed to help replace a broken fan from the tower. When working with anything electrical make sure to disconnect it from the power source.


TOOLS:

[iFixit Opening Tool](#) (1)

Step 1 — Panel Cover



 Make sure the computer is turned off, by selecting the start menu and choosing “Shut Down”.

 Ensure all cables, speakers and other devices are unplugged and turned off before opening the computer case.

Step 2



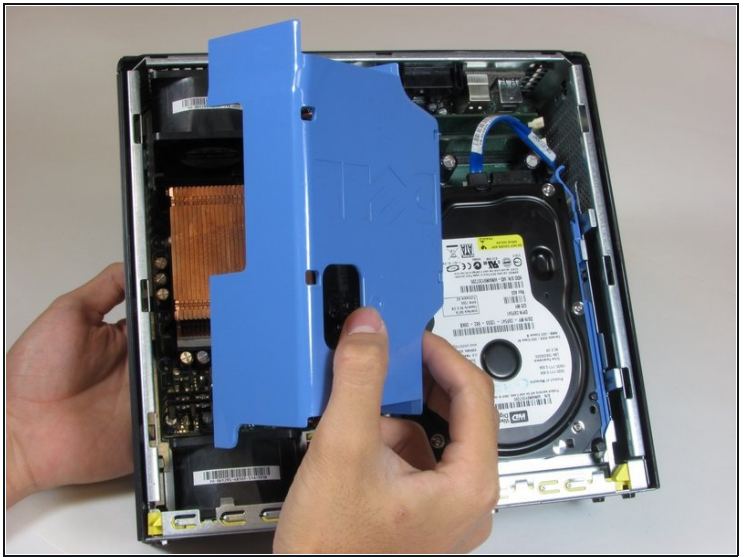
- Lay the computer on its side; you will see a blue knob.
- Turn this knob 90 deg clockwise.

Step 3



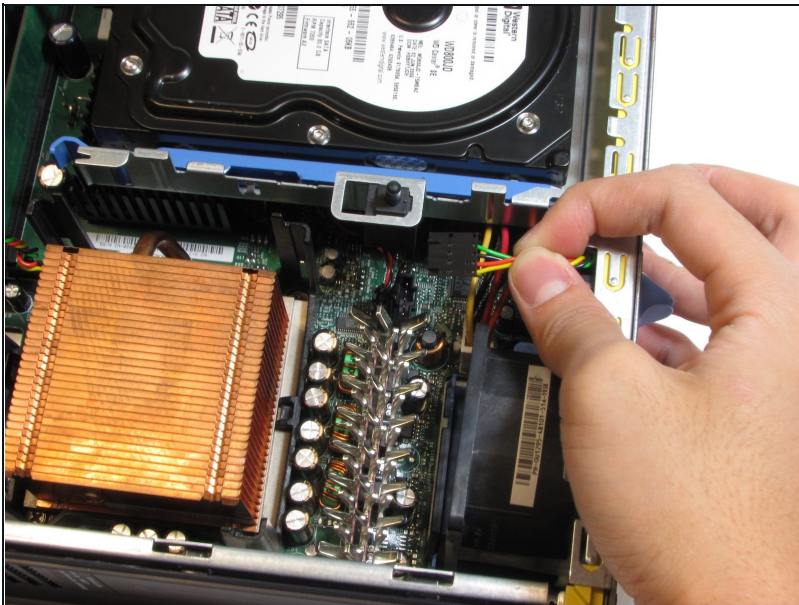
- Slide the panel case forward about 1/2 inch while knob is turned.
- Lift panel case off computer.

Step 4 — Lower Fan



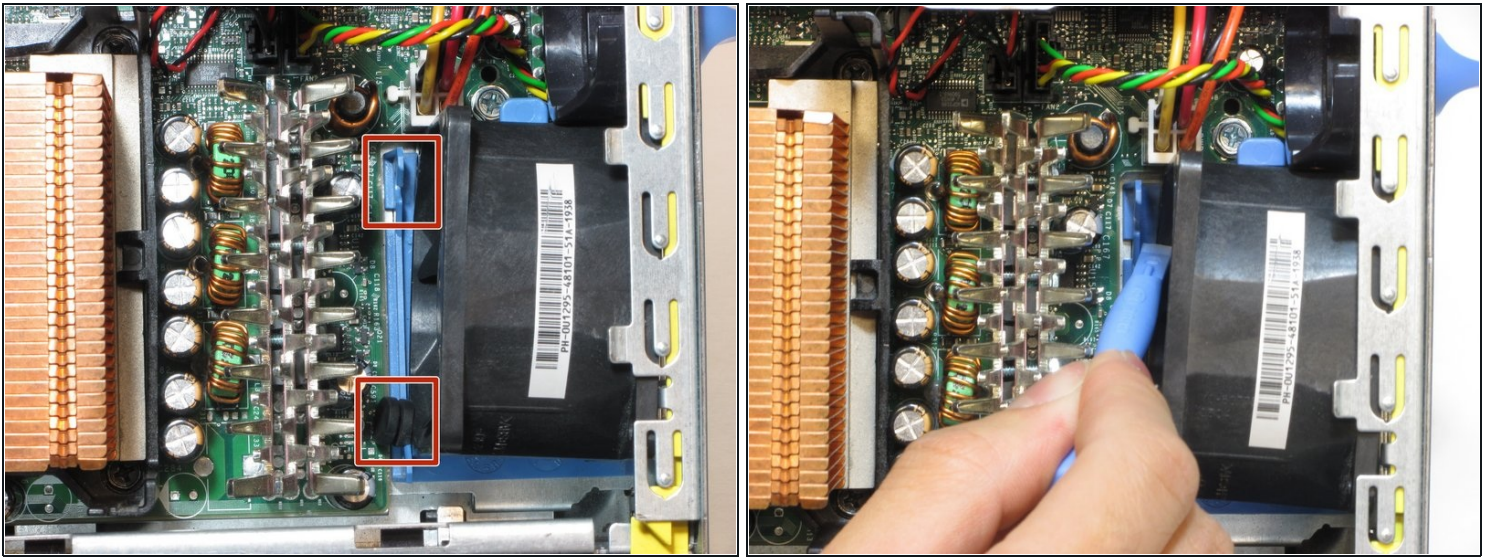
- Remove the large blue cover from the computer. There are no screws or tabs holding it in place.

Step 5



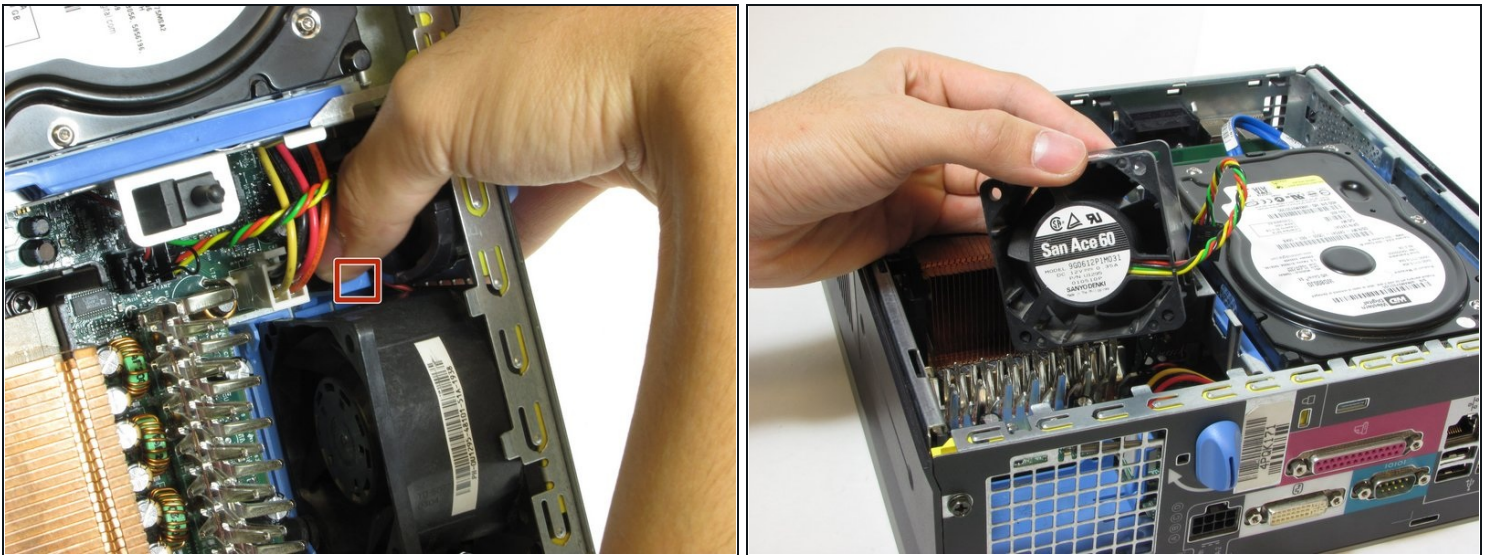
- Remove the power supply by pressing the release tab. It is distinguished by the black, red, green, and yellow wires.

Step 6



- Remove the rubber grommets from the base of the fan. The iFixit Opening tool may be useful in this step.

Step 7



- Press on the blue release tab and remove the fan.

To reassemble your device, follow these instructions in reverse order.