



# Panasonic Lumix DMC-ZS8 Lens Replacement

This guide will show the proper steps to replacing the lens to the Panasonic DMC-ZS9 camera.

Written By: Elijah Painter



## INTRODUCTION

Camera lens' play a huge role in making cameras effective. Replacing a lens is easy as 1-2-3 and only takes 10-13 minutes.



### TOOLS:

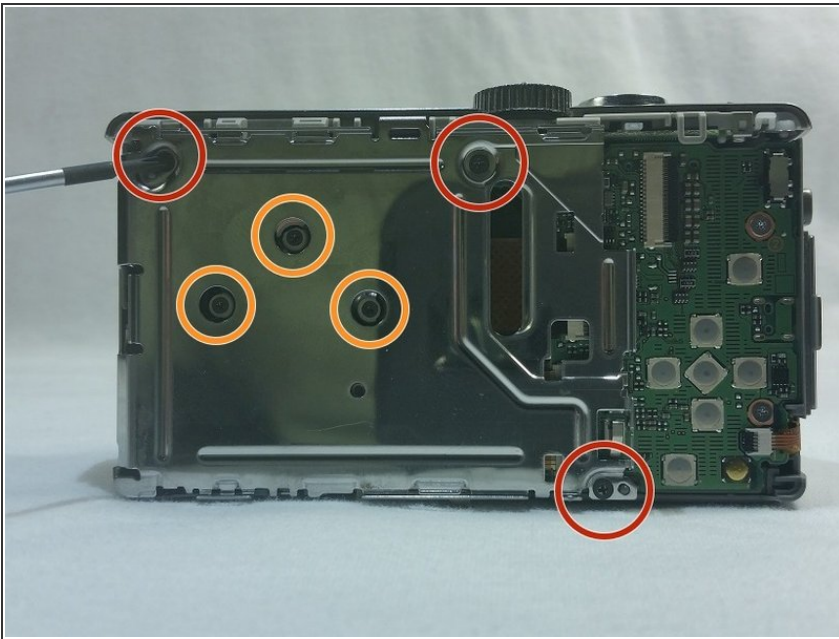
- [Small Phillips Head Screwdriver](#) (1)
  - [Spudger](#) (1)  
(If needed)
-

## Step 1 — Lens



- Take a Phillips Head screwdriver and remove the 2mm screws on the left and right side of the camera.

## Step 2



- Remove the 3 Phillips 4mm screws located on the aluminum plating inside the camera.
- Then remove the 3 Phillips 2mm screws located in the middle of the aluminum plating.

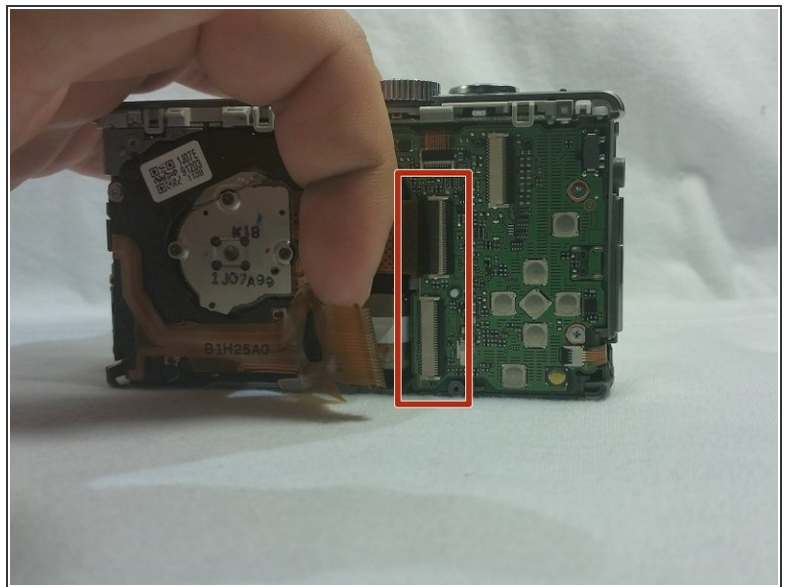


### Step 3



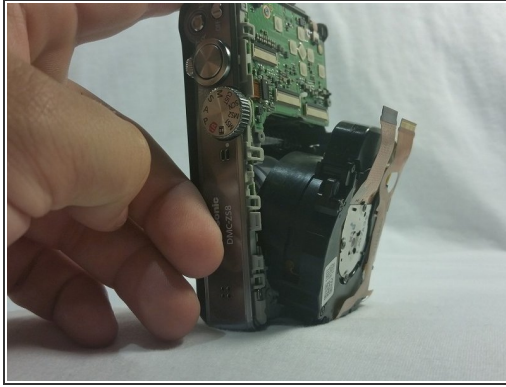
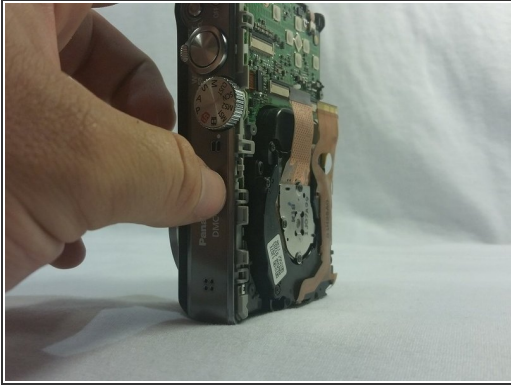
- Lay the camera on the front side where the aluminum panel is facing up.
- Once the camera is in the right position, lift up the aluminum plating.

### Step 4



- Stand the camera up in the upright position.
- Unplug both copper wiring plugs from the motherboard.

## Step 5



- Lift your camera into the upright position
- The camera lens should slide out. (Pry it out with a spudger or a plastic opening tool if needed)

To reassemble your device, follow these instructions in reverse order.