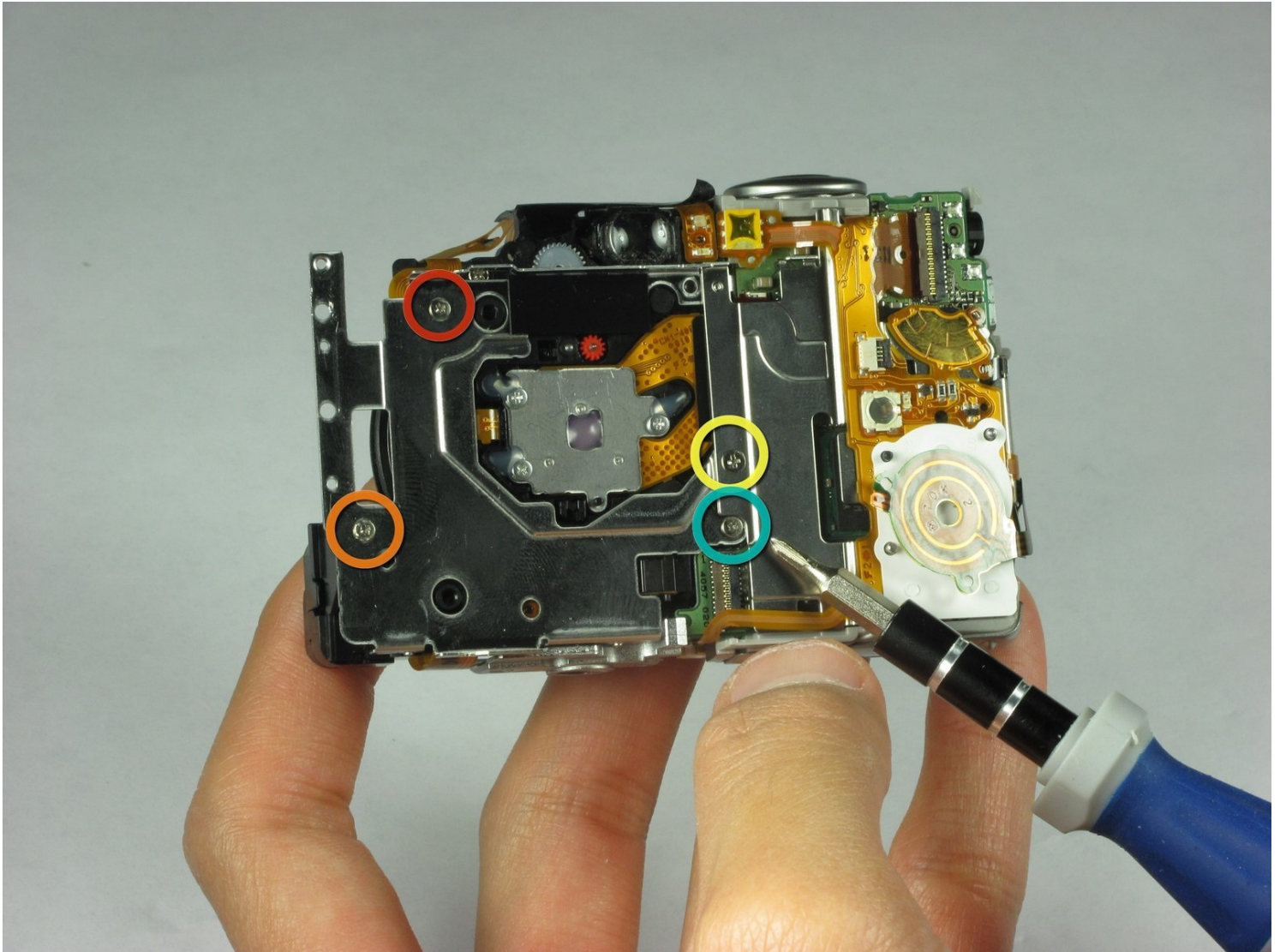




Canon PowerShot SD850 IS Camera Lens Replacement

Use this guide to remove a broken camera lens...

Written By: Peter Tran



INTRODUCTION

Use this guide to remove a broken camera lens from your Canon PowerShot SD850 IS.

TOOLS:

Tweezers (1)

Phillips #00 Screwdriver (1)

Flathead 3/32" or 2.5 mm Screwdriver (1)

Spudger (1)

Step 1 — Case



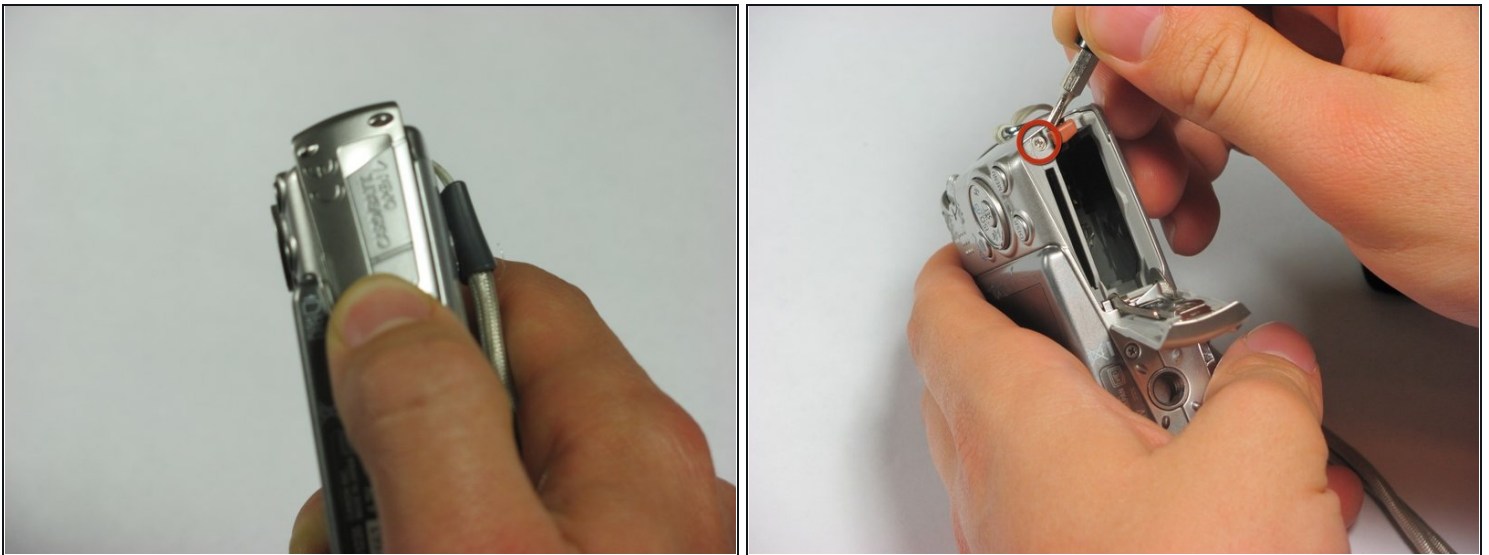
- Remove the following 4 screws:
 - Two 2.8 mm Phillips #00 at the bottom of the camera.
 - Two 2.75 mm Phillips #00 on the opposite side of the wrist strap.

Step 2



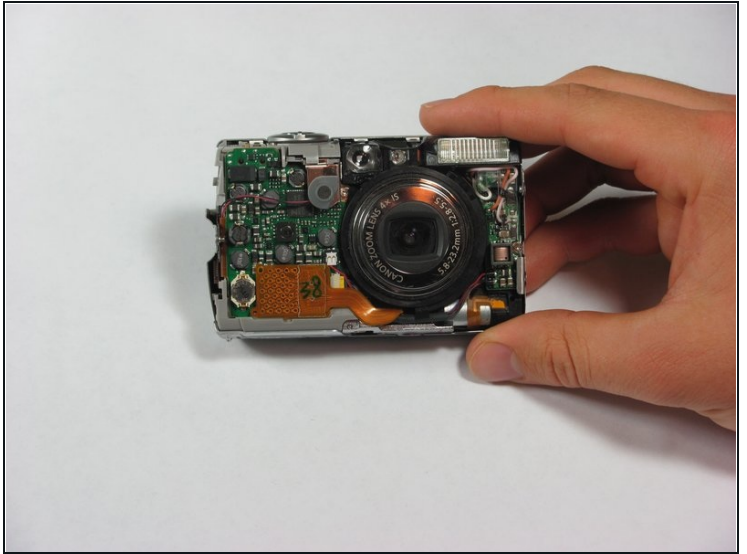
- Open the A/V OUT DIGITAL flap on the side of the wrist strap.
- Remove the 2.75 mm Phillips #00 under the A/V OUT DIGITAL flap on the side of the wrist strap.

Step 3



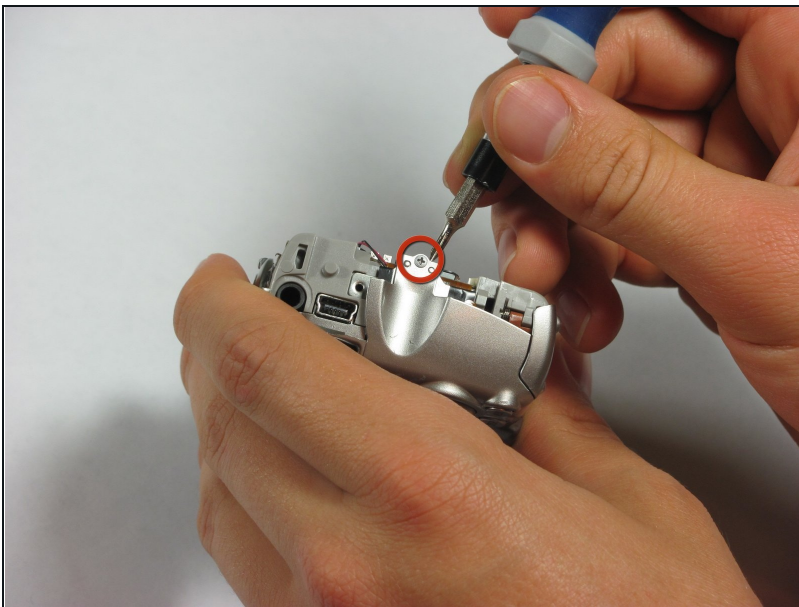
- On the bottom of the camera, use your fingernail to slide the light gray tab towards the edge of the camera.
- Slide light gray door and pull up to open the door.
- Remove the 8.35 mm Phillips #00 next to the brown tab that holds the battery.

Step 4



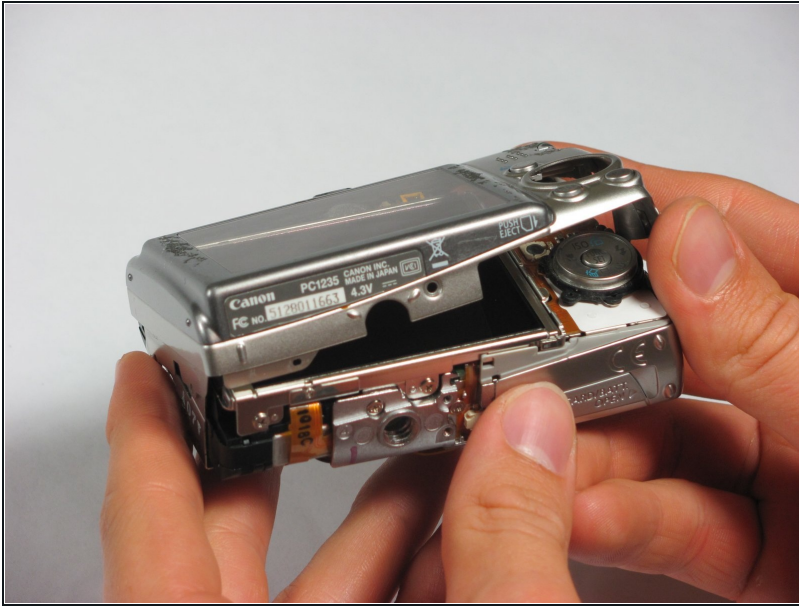
- Gently pull the front cover straight out from the camera. This will expose the wiring on the front of the camera.

Step 5



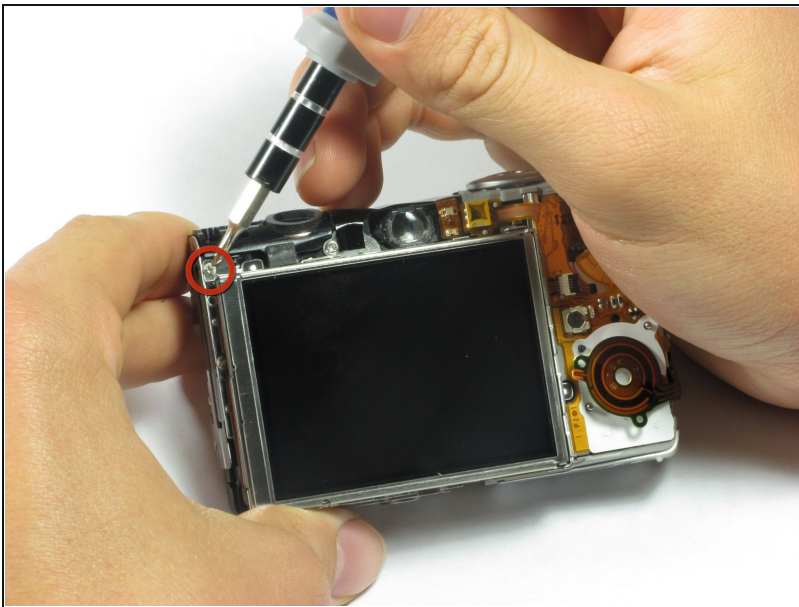
- Remove the 2.75 mm Phillips #00 next to A/V OUT DIGITAL.

Step 6



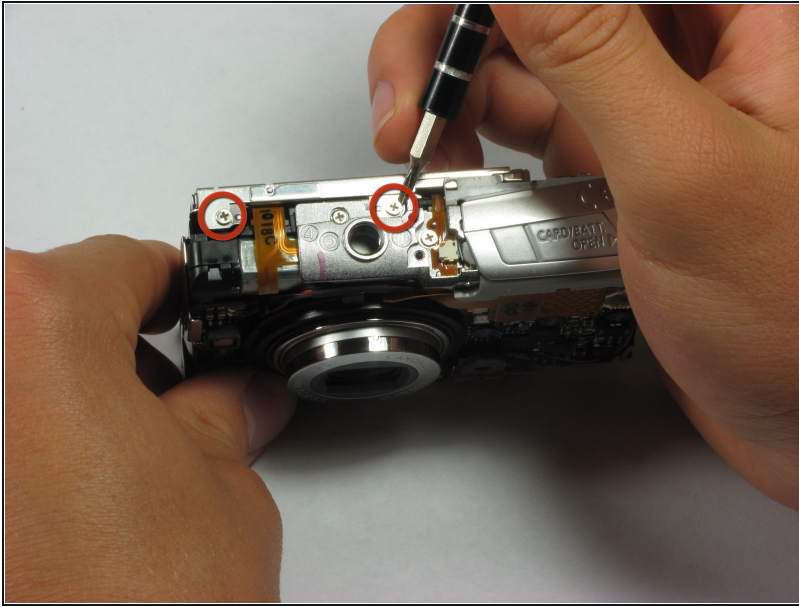
- Slide the back casing (with the screen protector) off to reveal the LCD and back wiring.

Step 7 — LCD Screen



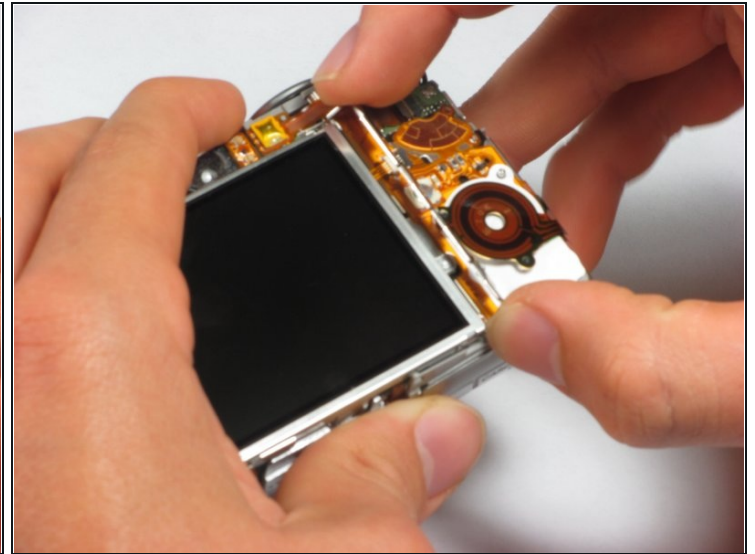
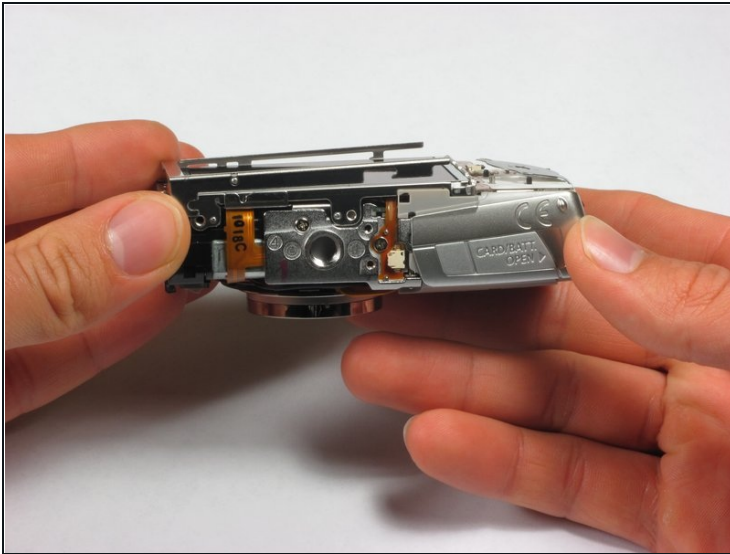
- Remove the 1.75 mm Phillips #00 located at the top left of the LCD screen.

Step 8



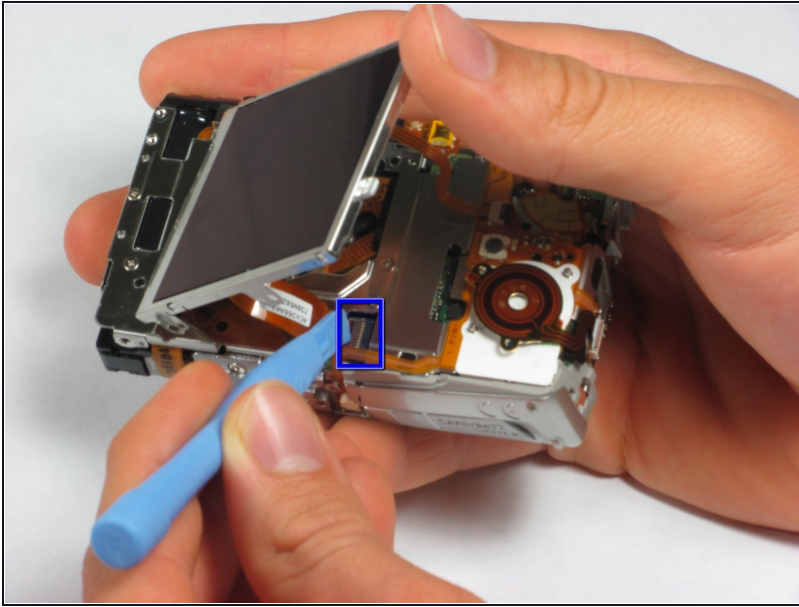
- Remove the two 3.4 mm Phillips #00 located at the bottom of the camera.

Step 9



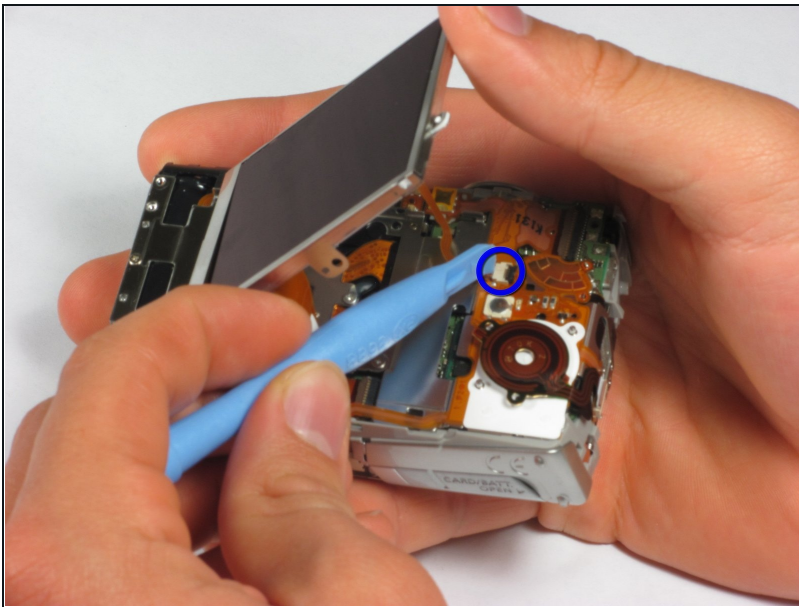
- Remove the two metal frames that hold the LCD panel in place.

Step 10



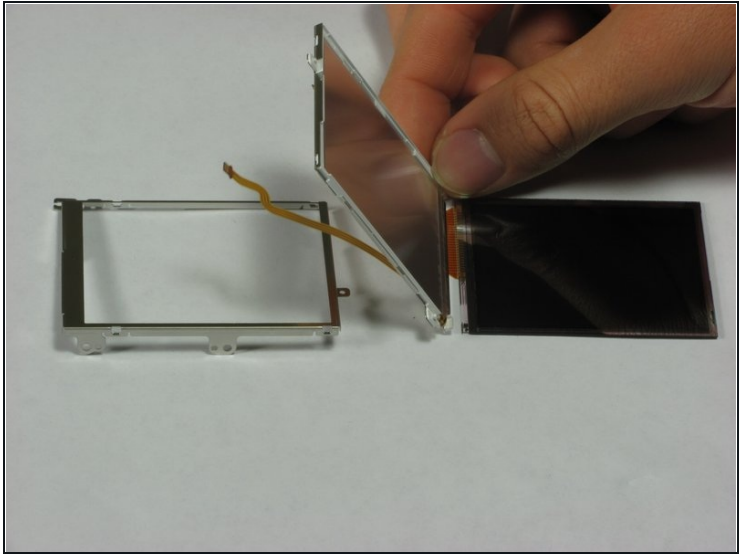
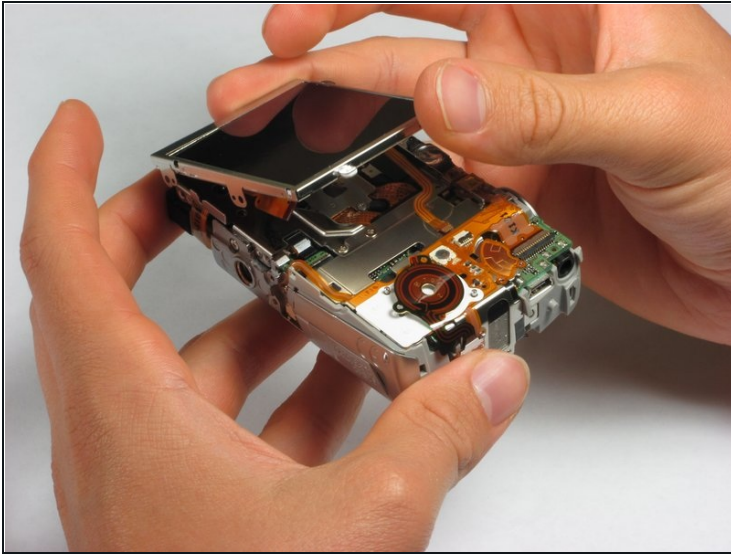
- The LCD screen should now only be attached by two LCD data cables.
- Lift the screen from the left side and use a spudger or a small flat head screwdriver to flip the black portion of the connector upward to unlock it.
- Carefully slide the data cable out of the connector.

Step 11



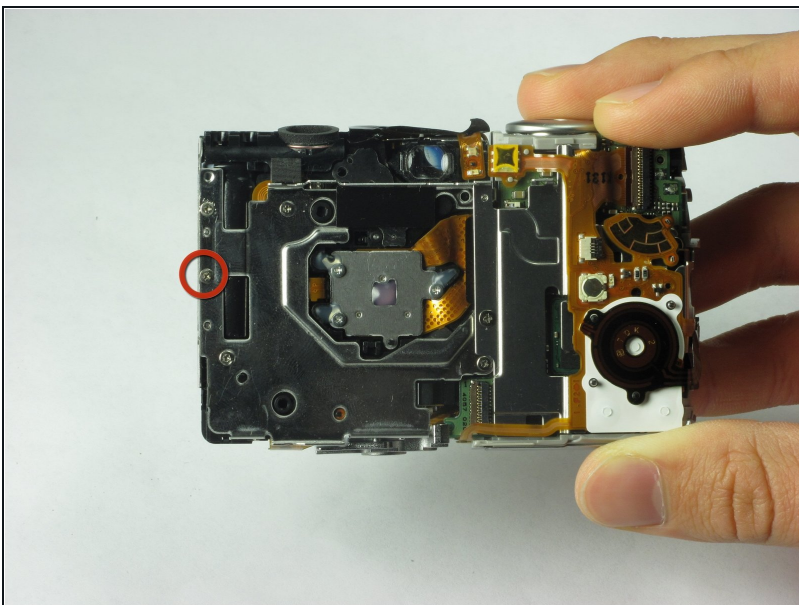
- The LCD should still be connected by the backlight cable.
- To remove the backlight cable, use a spudger or a small flat head screwdriver to unlock the backlight cable.
- Carefully slide out the backlight cable.
- The LCD screen can now be fully detached from the camera body.

Step 12



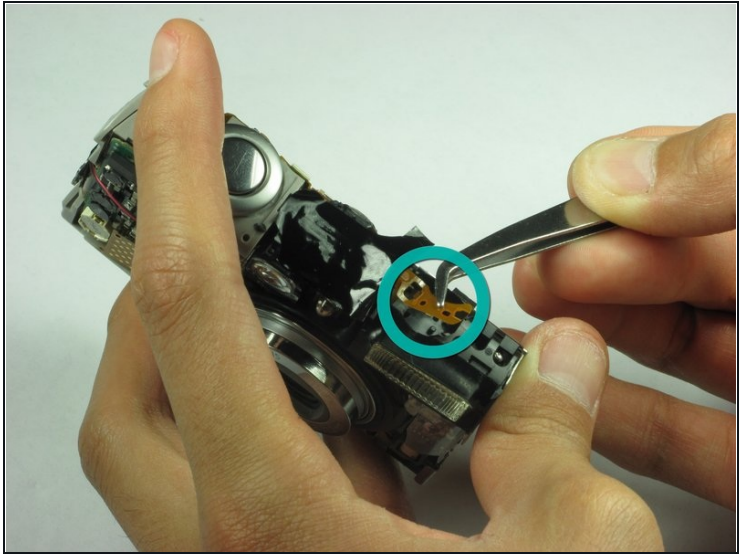
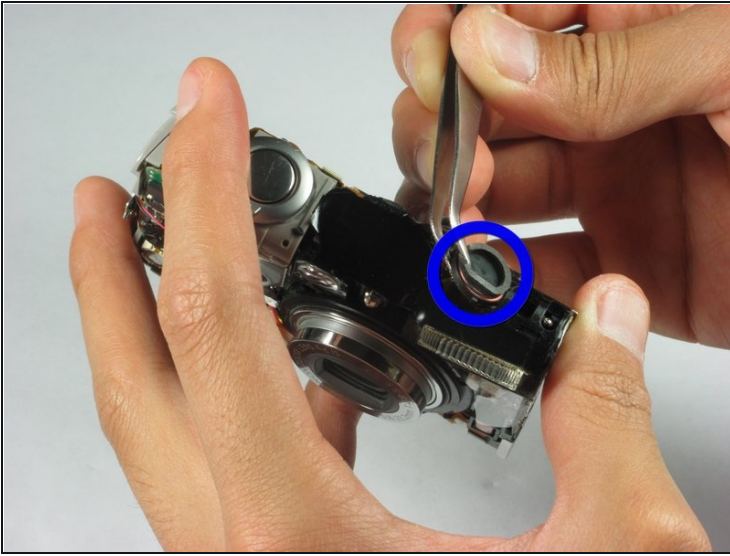
- The LCD screen and housing are now in three pieces:
 - LCD screen
 - LCD screen frame
 - LCD back housing
- The LCD screen itself can now be removed and fixed/replaced.

Step 13 — Flash Unit



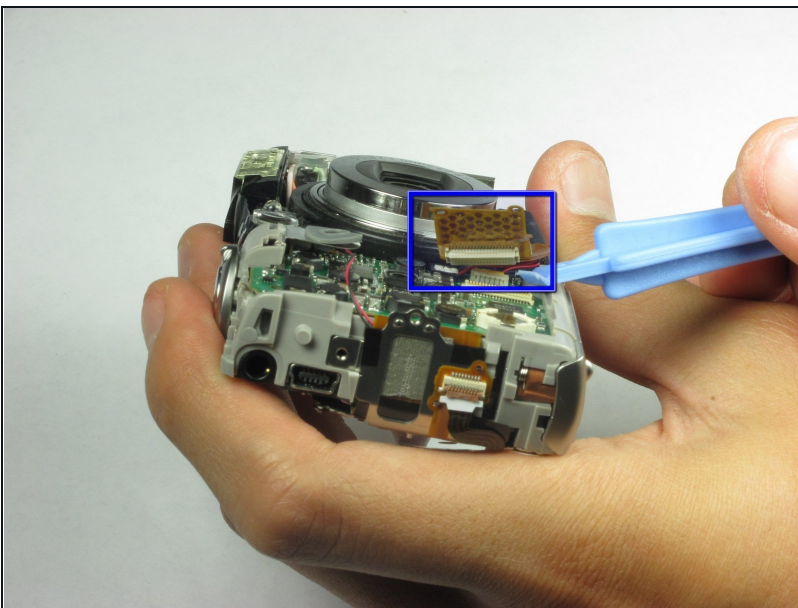
- Remove the 1.85 mm #00 Phillips located on the left side of the camera.

Step 14



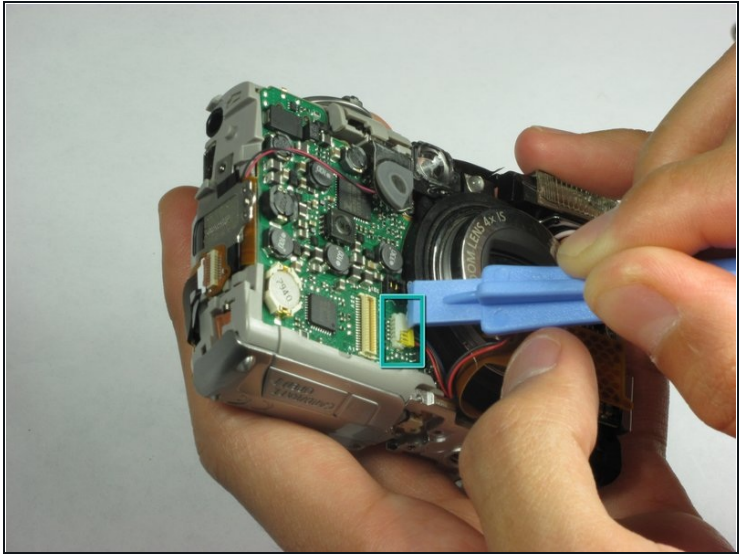
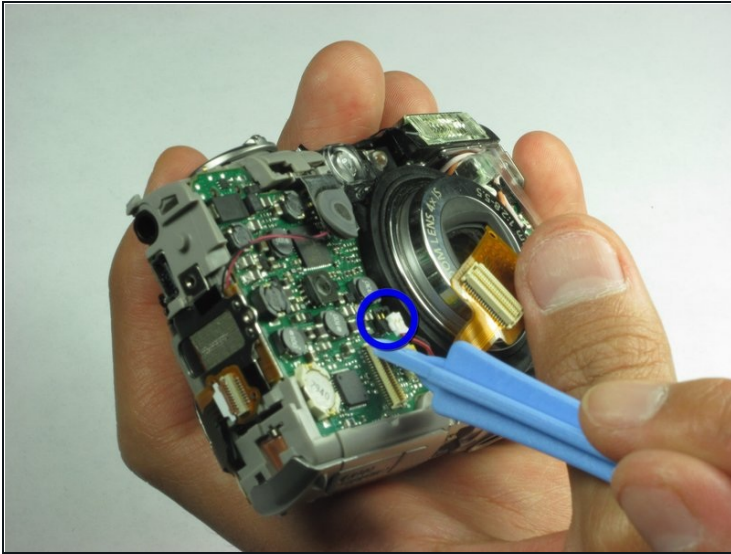
- Use a set of [tweezers](#) to remove the speaker located at the top of the camera on the flash unit.
- Next use the tweezers to carefully remove the speaker cable off its respective holders.

Step 15



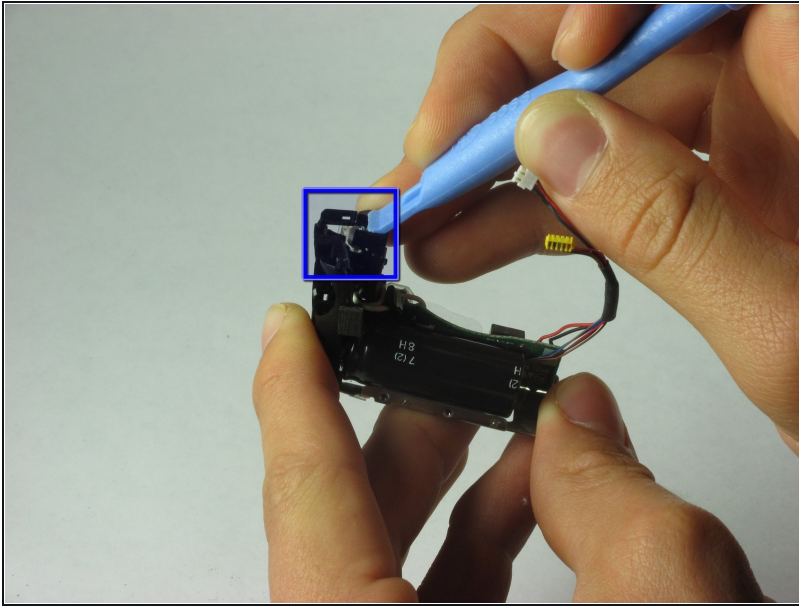
- Use a spudger or a flathead screwdriver to remove the camera lens cable located in the front of the camera.

Step 16



- Use a spudger or a flathead screwdriver and carefully pry out the first flash cable from the bottom of the cable. The white 2 prong power cable pops UP (use spudger below red/black insertion and put upward pressure). For the yellow one, apply pressure horizontally.
- Next use a spudger or a flathead screwdriver and carefully pry out the second flash cable.

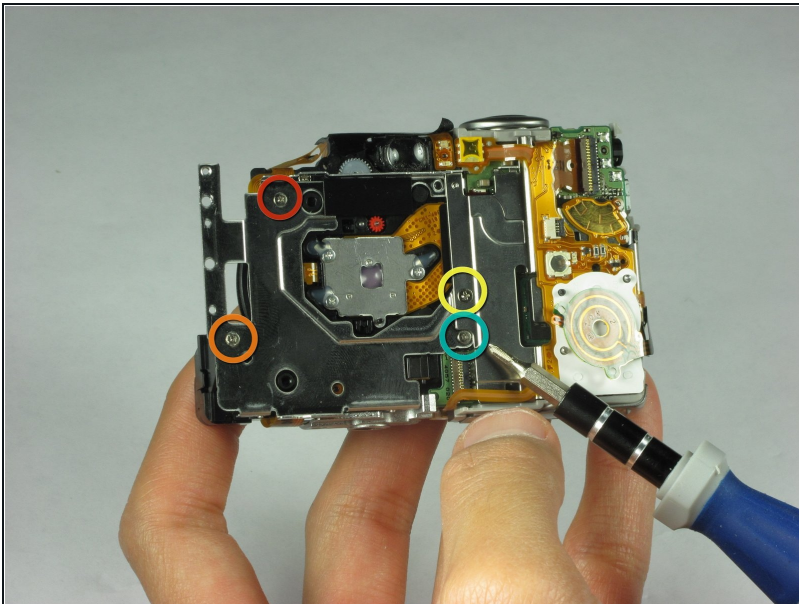
Step 17



- Gently remove the flash component from the rest of the camera.
- Use a spudger or a flathead screwdriver and carefully pry off the plastic piece on top of the flash unit.
- The flash unit can now be removed and replaced.

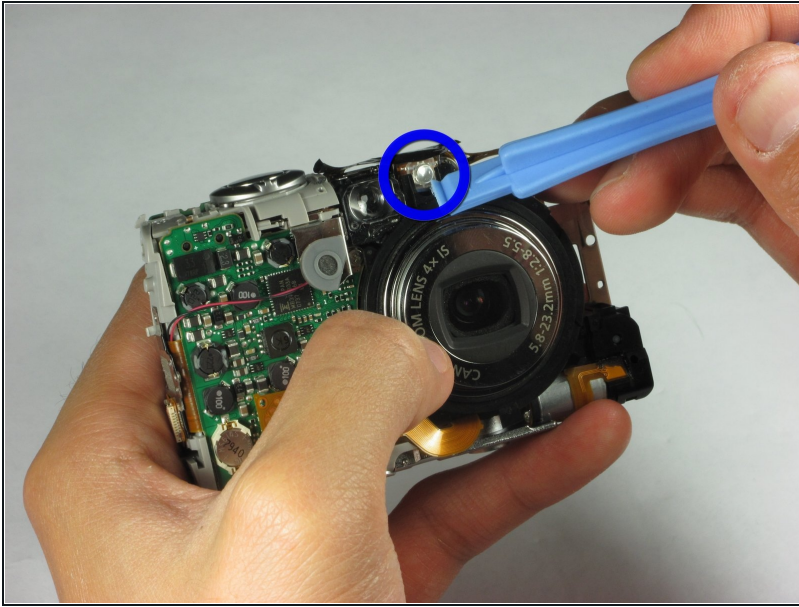
⚠ Be careful not to touch the capacitor attached to the flash unit as it may still be holding a charge!

Step 18 — Camera Lens



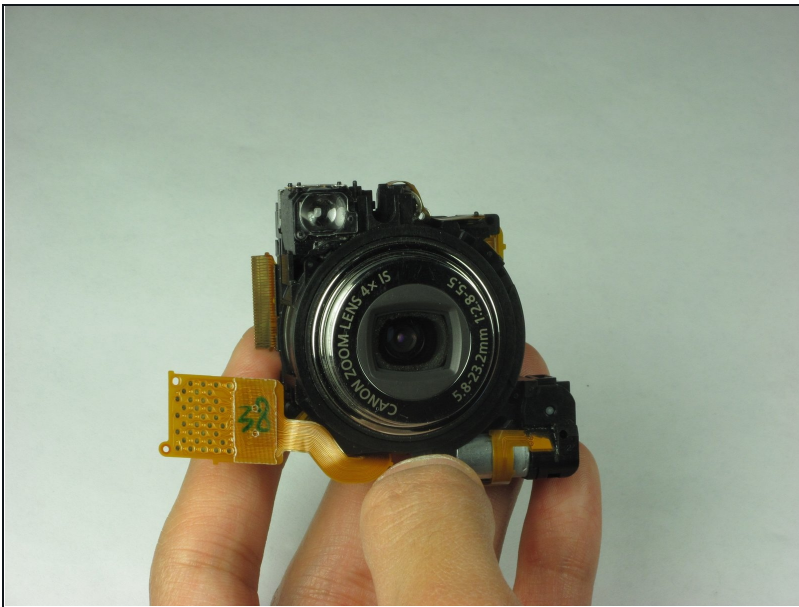
- Remove four screws located on the back of the camera:
 - 6.15 mm #00 Phillips
 - 2.75 mm #00 Phillips
 - 2.15 mm #00 Phillips
 - 2.7 mm #00 Phillips

Step 19



- Use a spudger or a flathead screwdriver and carefully pry out the bulb located in the front of the camera on top of the camera lens.

Step 20



- Gently remove the camera lens from the rest of the camera.

To reassemble your device, follow these instructions in reverse order.